

May 27, 1930

May 24, 1930.

APPROVAL OF PLANS

CAL. NO. 717-28-BZ,
PREMISES:- 152-164 East 87th Street,
Manhattan.

MEMORANDUM FOR CHAIRMAN.

Two sets of blue prints, each set consisting of seven prints, showing the cellar plan, 1st story plan, 2nd story plan, upper stories plan, roof plan, street front elevation and sectional drawings of the proposed garage within a business district filed May 22, 1930, by William F. Doyle, have been examined by me with reference to stipulations in resolution adopted by the Board April 15, 1930, and found to be in substantial compliance with the requirements of the resolution.

Recommend approval of the drawings as filed.

Respectfully submitted,

Thomas M. Hallam

Assistant Engineer.

TMH:ed

*Spencer - Submit to Board with
consent of W.E.W.*

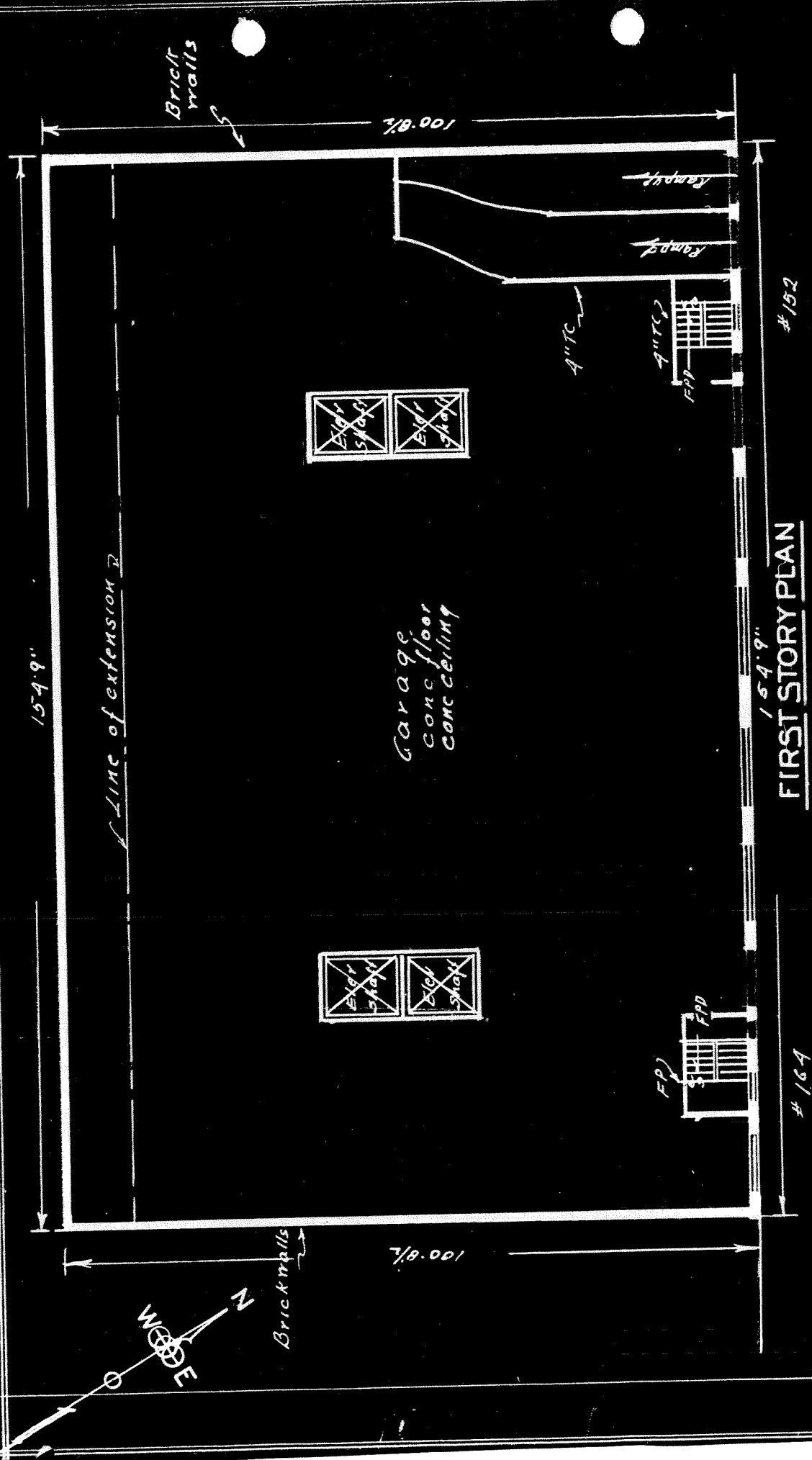
SCALE 1" = 20' 0"

152-164 EAST 87 ST.

MAN BORO N Y C

11 JOHN ST

N Y C



FIRST STORY PLAN
EAST 87 STREET

164

152

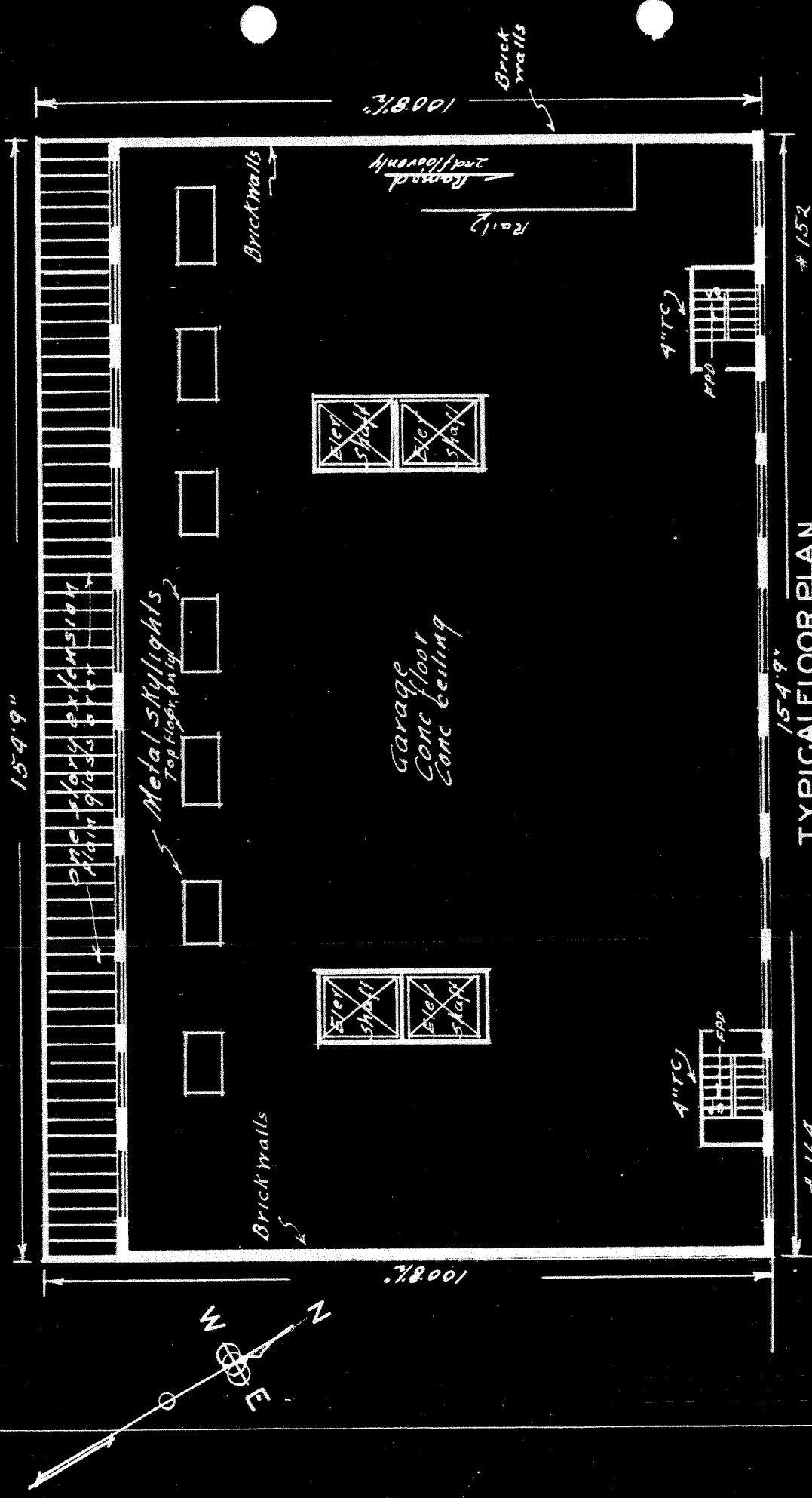
SCALE 1" = 20' 0"

152-164 EAST 87 STREET

MAN BORO NYC

11 JOHN ST

NYC

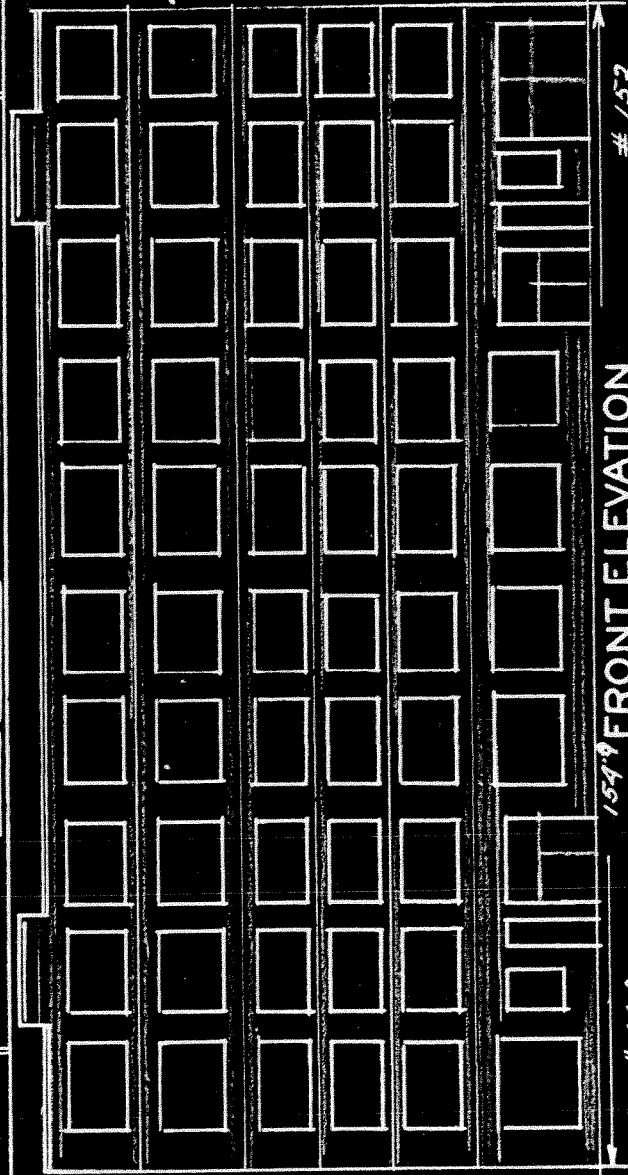


TYPICAL FLOOR PLAN
 Second to Sixth story
 EAST 87 STREET

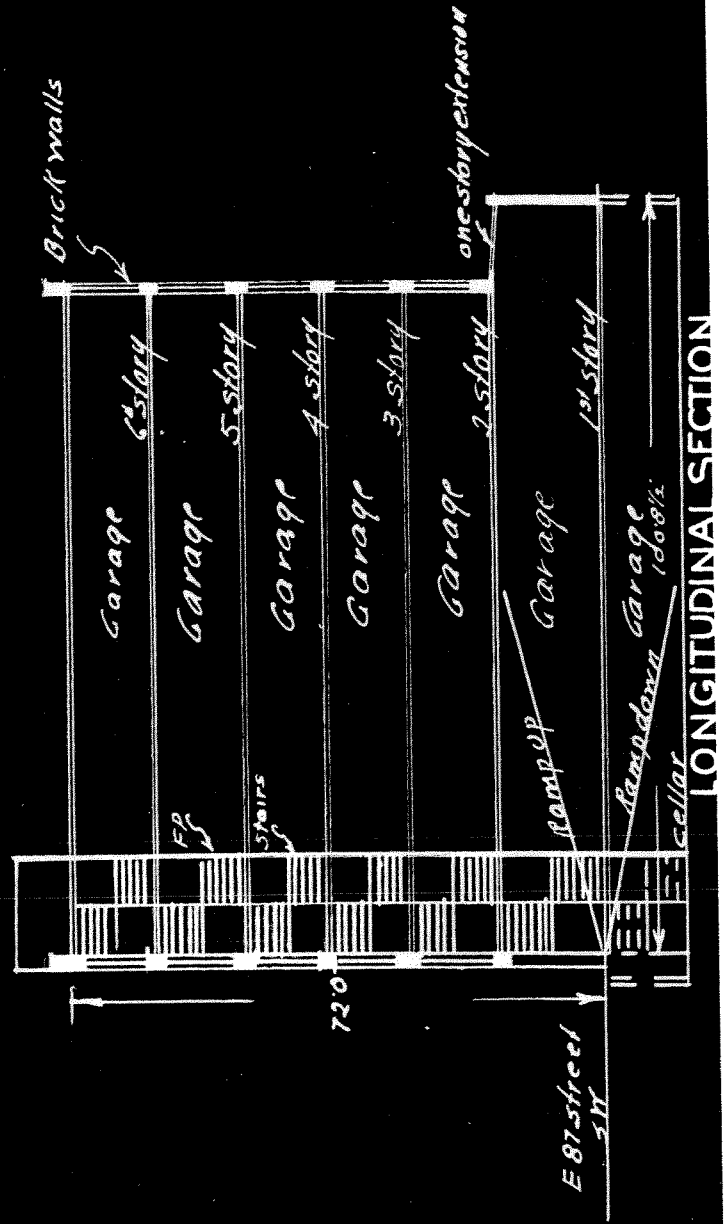
SCALE 1" = 25' 0"

PREMISES
152-164 EAST 87 STREET
MANHATTAN NYC

EDWARD HOTEL
11 JOHN ST
NEW YORK



154-9 FRONT ELEVATION
EAST 87 STREET



LONGITUDINAL SECTION