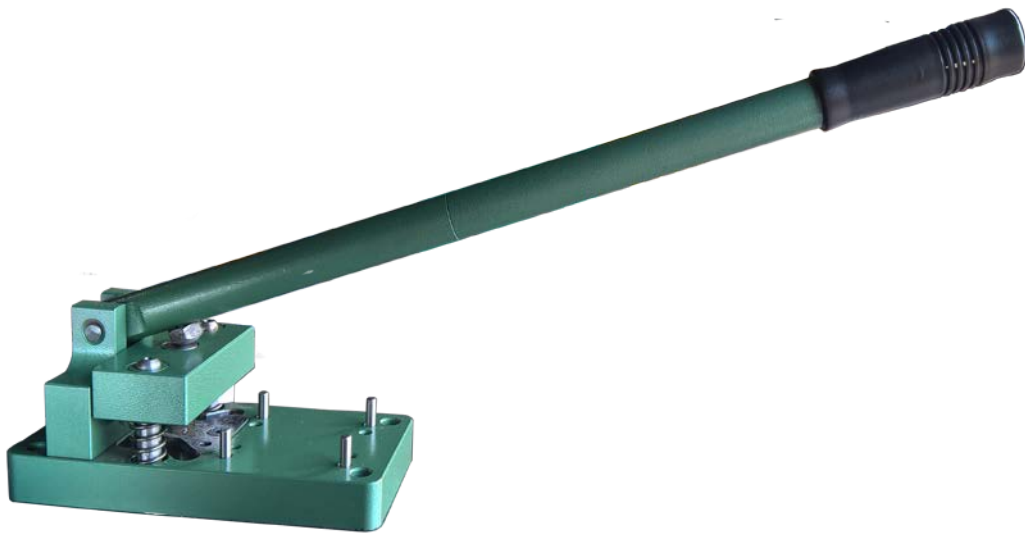


August 2017

Tin Knocker
TK Drive Cleat Notcher
Instructions & Parts Diagram



TAAG Industries Corp.
“The TIN KNOCKER People”
1550 Simpson Way, Escondido, CA 92029
Tel: (800)640-0746 Fax: (760)727-9948 Email: info@taagind.com
www.tinknocker.com

SAFETY PRECAUTIONS

1. **Never use a machine or tool for anything other than its intended purpose. Use the proper tool and equipment for the task.**
2. **Do not operate the machine in excess of its rated capacity.**
3. **Always turn off machine and remove from power source before making adjustments.**

WARRANTY

All new machines are sold with a one-year limited warranty, on factory defective parts. The warranty is limited to the original user. TAAG Machinery Co. at its option, will repair, replace or refund the purchase price of any part, tool or machine that fails during the warranty period. TAAG Machinery Co. will pay normal shipping charges for replacement parts. After 90 days from date of purchase, all express or overnight delivery charges are the responsibility of the customer. Purchaser must deliver to TAAG Machinery Co., at the address below, any written claim, with proof of original purchase. Replacement parts will be invoiced to purchaser and credit issued when the failed part is delivered to TAAG Machinery Co. Removal, reinstallation or replacement parts shall be at purchasers' / user's expense. Failure due to improper use of the machine voids the warranty.

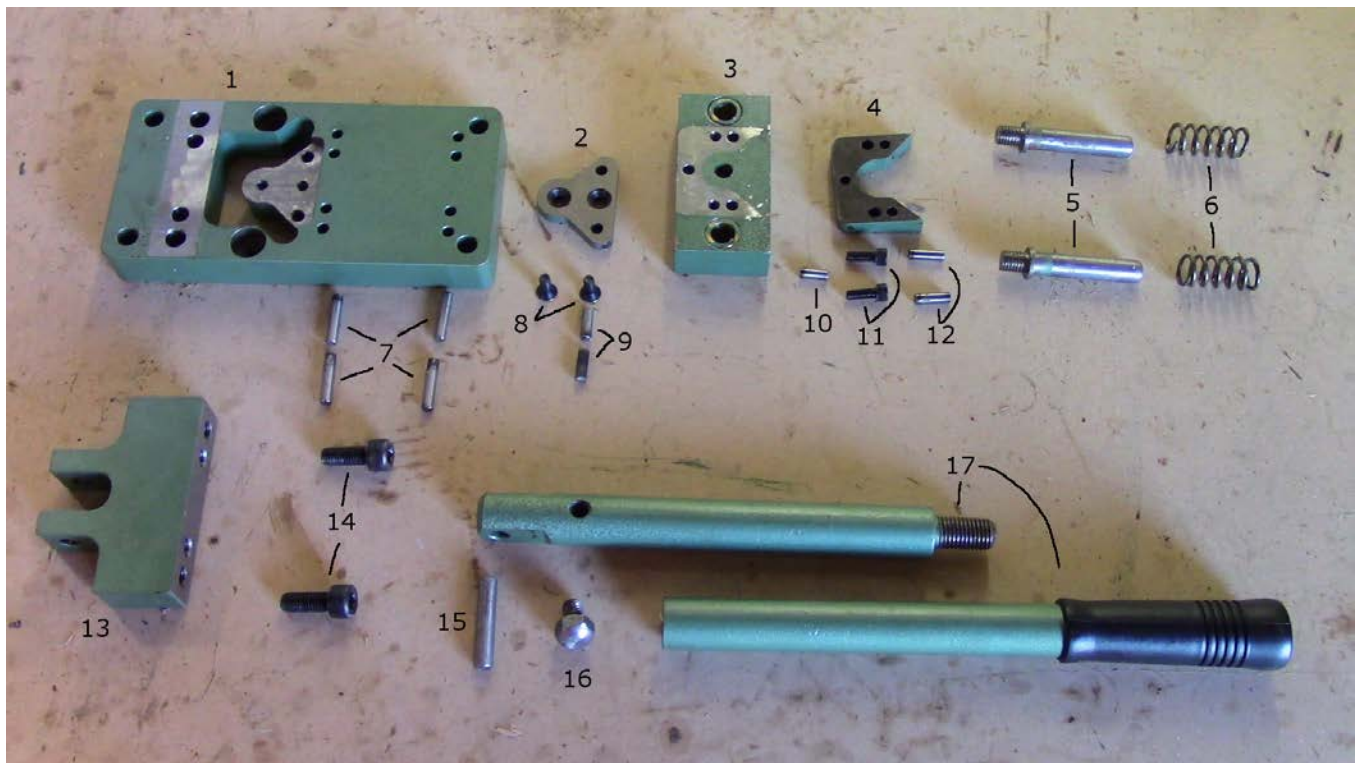
NOTE:

1. This machine has been tested and adjusted prior to shipment, but can and often does require readjustment due to vibration and bouncing during transport. These are procedures with which you, as a user, should be familiar, as you will use them repeatedly over the life use of the machine.
2. If you have difficulty in performing these procedures, we are here to support you. Call us at: (800) 640-0746.
3. Opening rolls (for Pittsburgh Lock) are consumable items and not subject to warranty.

This tool notches drive cleats giving drives a rounded end for an easier installation. Notch drive cleats before or after they are formed. Easy to use with a spring-loaded push handle. This tool easily mounts to any bench.

Specifications

- Capacity 22-gauge mild steel
- Machine Dimension, 21" Length x 4" Width x 10" Height
- Shipping Dimension, 11" Length x 4" Width x 6" Height
- Approximate Weight, 18 lbs.



Fine No.	TK Part No.	QTY.	Part Name
1	DCN001	1	base block
2	DCN004	1	die plate
3	DCN007	1	punch block
4	DCN008	1	punch
5	DCN012	2	spring stud
6	DCN013	2	spring
7	DCN014	4	peg 29x6mm
8	DCN005	2	countersunk socket head screw
9	DCN006	2	peg 17x6mm
10	DCN011	1	peg 15x6mm
11	DCN009	2	socket head screw small
12	DCN010	2	peg 19x6mm
13	DCN002	1	fulcrum block
14	DCN003	2	socket head screw large
15	DCN015	1	peg 44x9mm
16	DCN017	1	Dome headhex bolt
17	DCN016	1	handle

TAAG Industries Corp.
“The TIN KNOCKER People”
1550 Simpson Way, Escondido, CA 92029
Tel: (800)640-0746 Fax: (760)727-9948 Email: info@taagind.com
www.tinknocker.com