

# Sage 100 ERP Tips and Tricks:

## Utilize the Power of Business Insights Explorer (MAS90/200)

Prepared by:

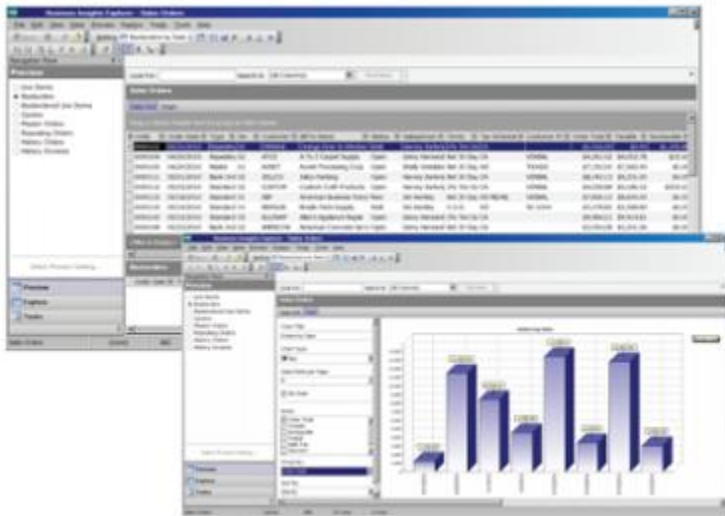
Anthony Volpe  
Senior Software Consultant

October 2015

Business Insights Explorer is the most convenient way to navigate your business intelligence. It brings ad hoc inquiry, drill-down analysis to a whole new level. Turn your data into knowledge that you can act on by using powerful sorting, grouping, filtering, and charting capabilities that you can customize to your specific needs.

This easy-to-use inquiry and analysis application optimizes your daily decision-making tasks in the most critical areas of your business. A streamlined grid interface spans multiple data elements in one view, and you can choose among predefined views for Sales Order, Accounts Receivable, General Ledger, Accounts Payable, Bill of Materials, Inventory Management, and Purchase Order.

Use quick-click charts for a visual representation of the data and to show trends. Change views for the same customer, plus drill down to the transaction level and access customer maintenance for edits without having to go to other modules in your Sage 100 ERP system.



With just a few clicks, Business Insights Explorer delivers quick and easy data inquiries, answers to “what if” scenarios, and last-minute, must-have executive requests.

Quickly convert your Business Insights Explorer grid information into charts and display your information the way you want to see it.

---

## **BENEFITS**

- Get timely access to key business information in a format that is easy to read and understand.
- Easily apply query, reporting, and statistical analysis to make faster and better decisions for your future.
- Use quick-click charts for a visual representation.
- Monitor a new product's acceptance rate or the impact that a competitor's promo is having on your sales.
- Share information with others in your organization in a meaningful way.
- Use an intuitive, grid-based view of key entity and transaction-level data for more precise tracking and resolution.
- Easily drill into original records and change views for access to invoices and transactions.
- Save views containing customized preferences and predefined filters for future use.
- Gain quick access to key system tasks for the displayed entity with powerful task launch options.
- Enable a wide range of sorting, grouping, and reorganizing functionality with easy-to-use customization and personalization features.

For more information or for assistance with modifying the lookup window in Sage 100 ERP (MAS 90/200), contact us now at [info@llbgroup.com](mailto:info@llbgroup.com) or **267.457.4700**.

## About the LLB Group, LLC

Since 1984, The LLB Group has provided Greater Philadelphia businesses with outstanding information technology (IT) solutions.

The LLB Group supports businesses in the following areas:

- ◆ Software - Sage 100 ERP & CRM (formally MAS 90 & 200), Acumatica
- ◆ IT Managed Services – Proactive infrastructure and service desk support
- ◆ Cloud Services – From Software as a Service (SaaS) to Infrastructure as a Service (IaaS)
- ◆ Telecommunication Solutions – Carrier services (voice and internet) and hosted VoIP
- ◆ Energy Procurement – Single source for choosing energy suppliers in deregulated states

**Our mission statement:** To establish and maintain mutually beneficial, long-term relationships with our clients by delivering the latest technology, consulting, services, maintenance, and support as a highly cost-effective IT solution in order to maximize our clients' productivity and profitability.

**CONNECTING THE THINGS THAT MAKE BUSINESS WORK SINCE 1984**