



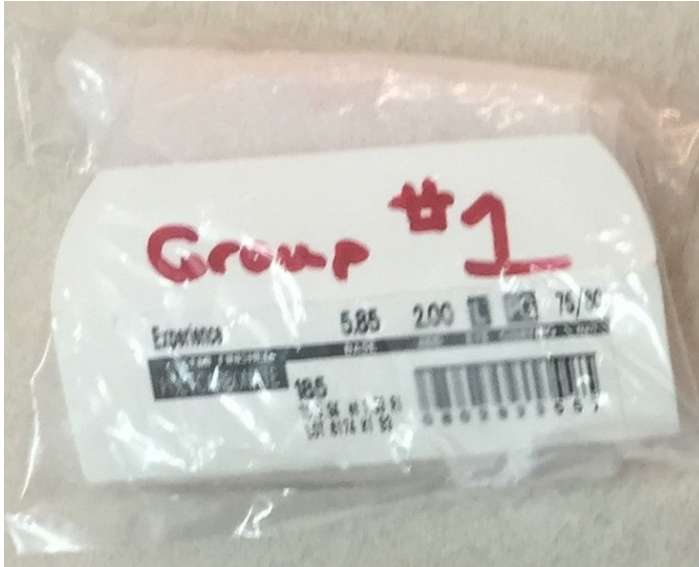
COLTS™
Laboratories

Company (To appear on report)			
Contact (To appear on report)			
Street Address			
City			
State		Zip Code	
Email			
Phone			
PO Number/Credit Card Number			

<u>Plano Lens Configuration</u>
Maximum base curve of 6.25 diopters
Edged round to 54.75 - 55.04 mm diameter with a uniform 115°±5° included angle bevel
In no case less than 2.0 mm at its thinnest point

<u>Product 1 (4 samples) - Lens / Coating Information (Please include lens box top)</u>			
Lens Mfg		Lens Material	
HC Mfg		HC Name/Type	
AR Mfg		AR Name/Type	
<u>Product 2 (4 samples) - Lens / Coating Information (Please include lens box top)</u>			
Lens Mfg		Lens Material	
HC Mfg		HC Name/Type	
AR Mfg		AR Name/Type	
<u>Product 3 (4 samples) - Lens / Coating Information (Please include lens box top)</u>			
Lens Mfg		Lens Material	
HC Mfg		HC Name/Type	
AR Mfg		AR Name/Type	
<u>Product 4 (4 samples) - Lens / Coating Information (Please include lens box top)</u>			
Lens Mfg		Lens Material	
HC Mfg		HC Name/Type	
AR Mfg		AR Name/Type	
<u>Product 5 (4 samples) - Lens / Coating Information (Please include lens box top)</u>			
Lens Mfg		Lens Material	
HC Mfg		HC Name/Type	
AR Mfg		AR Name/Type	
<u>Product 6 (4 samples) - Lens / Coating Information (Please include lens box top)</u>			
Lens Mfg		Lens Material	
HC Mfg		HC Name/Type	
AR Mfg		AR Name/Type	

- Fill out the Lens Material Qualification Form.
- Complete the preliminary check form for all groups and send a copy in the shipment.
- 1 package for all 4 lenses in a group of samples with one box top or box for identification.





ANSI Z87.1 – 2020 Rx Lens Material Qualification

Lens Configuration	
Uniform 115° Included Safety “V” Bevel	Edged to 54.75-55.04 mm round.
Maximum base curve of 6.25 Diopter	Not less than 2.0 mm anywhere on lens

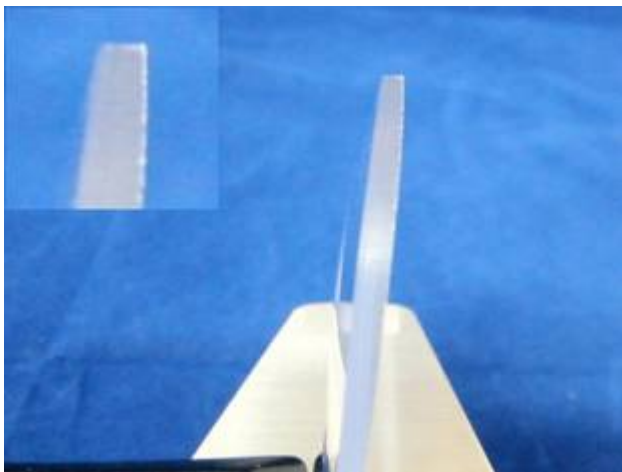
Photo References



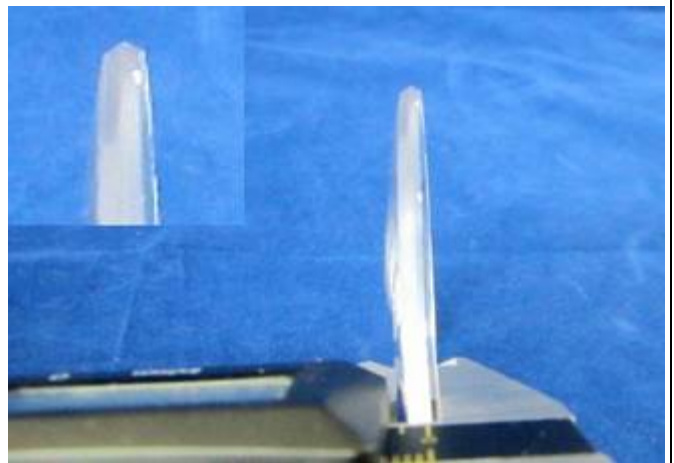
ⓘ The Lens Holder of the Impactor



ⓘ Ex. Lens diameter is too wide and will not fit into holder of impactor



ⓘ Lens sample **without** safety bevel
(Incorrect)



ⓘ Lens with correct Safety bevel
(Correct)



Preliminary Check: ANSI Z87.1 – 2020 Rx Lens Material Qualification

Lens Configuration	
Uniform 115° Included Safety “V” Bevel	Edged to 54.75-55.04 mm round.
Maximum base curve of 6.25 Diopter	Not less than 2.0 mm antwhere on the lens

Product No. _____				
Sample	Min. Thickness	Diameter (mm)	Safety Bevel	Lens Descriptions
1			Yes / No	Yes / No
2			Yes / No	Yes / No
3			Yes / No	Yes / No
4			Yes / No	Yes / No

Product No. _____				
Sample	Min. Thickness	Diameter (mm)	Safety Bevel	Lens Descriptions
1			Yes / No	Yes / No
2			Yes / No	Yes / No
3			Yes / No	Yes / No
4			Yes / No	Yes / No

Product No. _____				
Sample	Min. Thickness	Diameter (mm)	Safety Bevel	Lens Descriptions
1			Yes / No	Yes / No
2			Yes / No	Yes / No
3			Yes / No	Yes / No
4			Yes / No	Yes / No

Product No. _____				
Sample	Min. Thickness	Diameter (mm)	Safety Bevel	Lens Descriptions
1			Yes / No	Yes / No
2			Yes / No	Yes / No
3			Yes / No	Yes / No
4			Yes / No	Yes / No