

Canon

imageFORCE
6170/6160/6155

THE POWER OF NEXT



- Black-and-white A3 Multifunction Printer
- Prints up to 70 ppm (BW, Letter)
- Scans up to 270 ipm (300 dpi BW/Color Duplex)
- Up to 4800 x 2400 dpi Print Resolution

Device shown with optional accessories.

THE POWER OF NEXT

To push the boundaries of what's possible, you must be bold. The **Power of Next** represents Canon's latest phase of ambitious and advanced print innovation with the comprehensive line-up of imageFORCE technology. This highly productive lineup is designed to help you **print better, do more, and stay ahead** in today's digital workplace. Backed by a strong commitment to the Kyosei philosophy—which promotes living and working together for the common good—Canon ushers in a new era of purposeful printing—where cutting-edge innovation meets environmental responsibility.

imageFORCE 6100 SERIES

The imageFORCE 6100 series supports mid-to-high-volume enterprise environments, helping teams keep up with fast-paced workflows while delivering sharp black-and-white output with precise print quality. Utilizing rapid scanning and intelligent workflow integration, this is an optimal solution for users who depend on speed, accuracy, and reliability to stay productive.

Performance for Any Pace



70 ppm

Optimal for enterprise environments requiring high print volumes, fast and precise scanning, and digital workflow integration.



60 ppm

Best suited for workflows in the financial and insurance sectors with increased demand for higher volume printing and scanning.



55 ppm

Ideal for users printing and scanning in busy professional settings, such as dynamic co-working spaces.



PRINT BETTER

BRILLIANT QUALITY AND RELIABLE RESULTS

Achieve stunning, high-resolution prints with advanced precision, crisp black-and-white quality, and the trusted performance Canon is known for.

EXCEPTIONAL IMAGE QUALITY

D² Exposure Technology (Defined and Detailed)



Cutting-Edge OLED Technology: Combines Solid State Exposure using OLED and Silicon technologies to help produce excellent image quality and consistency.



Brilliant 4800 dpi: Canon's unique D² Exposure technology is designed to achieve up to 4800 x 2400 dpi resolution.



Outstanding Precision: Imaging technologies that deliver sharp and uniform images with deep black-and-white tones.



BLACK-AND-WHITE THAT PERFORMS. COLOR SCANNING THAT DELIVERS.

Performance doesn't need to stop at print. This highly capable monochrome device is built to help boost your productivity—empowering your workforce to handle everyday tasks with speed, accuracy, and smart document handling, from start to finish.

Scan Speeds of up to 270 Images Per Minute: Scan full-color documents quickly and accurately at single-pass duplex scan speeds.

Digitalization: Whether you're digitizing reports, ID cards, or mixed media files, you can capture clean, high-resolution scans that integrate seamlessly into your digital workflows.

HELP EXPAND PRINT EFFICIENCY WITH WORKFLOW SOLUTIONS

Manage tasks, track costs, and print and scan all on one platform with the optional uniFLOW Online, a powerful cloud-based solution that helps to reduce IT workload and adds flexibility to your print environment.

PRINT BETTER, BUILT TO PERFORM

The imageFORCE 6100 series features Canon's unique and sturdy anti-loosening welded frame, designed to handle long-term usage and promote peak performance.

DO MORE

INTUITIVE WORKFLOWS FOR EVERYDAY USE

Help elevate daily efficiency with seamless workflows, simple and intuitive print technology, integrated solutions, and flexible media handling.



SIMPLE USER INTERFACE

Each model within the imageFORCE line-up supports a consistent user interface, enabling operators to effortlessly run the device with a minimal learning curve.

- Large 10.1" responsive and intuitive touchscreen.
- Familiar interface with icons categorized by color.
- Easy customization settings for language, accessibility, and display preferences.

VERSATILE PRINT APPLICATIONS

Support for various paper sizes, finishes, and media types that adapt seamlessly to diverse office printing needs.



Reports

Forms

Memos

Contracts

Calendars

CLOUD READY SOLUTIONS

Canon's imageFORCE systems have the ability to integrate seamlessly with a range of powerful Canon and third-party software to help your workflow evolve. For example, you can easily print and scan to—and from—your favorite cloud storage services with Cloud Connector.

GAIN CONTROL OF YOUR FLEET

Centralize the management of your print fleet and maximize uptime with the support of imageWARE Enterprise Management Console. A standard feature on Canon devices, this console helps to monitor device status and consumables, apply security settings, update firmware, capture meter readings, and much more—anytime and anywhere.

HASSLE-FREE SETUP AND MAINTENANCE

Canon U.S.A.'s range of Smart Services is designed to help support you at every stage of the device management life cycle. Benefits include:

- Setting up and deploying your devices quickly.
- Enabling proactive service and fast issue resolution.
- Access upgrades and replace parts with ease.

PRINTING THAT PERFORMS. SCANNING THAT DELIVERS.

Performance doesn't need to stop at print. Scan speeds of up to 270 images per minute. Scan full-color documents quickly and accurately at single-pass duplex scan speeds. Whether you're digitizing reports, ID cards, or mixed media files, you can capture clean, high-resolution scans that integrate seamlessly into your digital workflows.

STAY AHEAD

FUTURE-READY. SECURITY-FOCUSED. ECO-CONSCIOUS.

Make the move forward with cutting-edge print technology that is built to help your organization be more productive, and more prepared for the unexpected.

SECURITY FEATURES TO HELP SAFEGUARD YOUR INFRASTRUCTURE

Defend your data and your device with robust security features designed with the modern workplace in mind. These include:



Security Environment Estimation:

Recommends security settings based on the devices operating environment.



Verify System at Startup:

At device start-up, helps to verify that the boot process, firmware, and applications have not been altered or tampered with. Includes automatic recovery of boot process.



FIPS 140-3 Storage Encryption:

A U.S. government standard for cryptographic modules, supporting data encryption and security in hardware and software systems.



SIEM Integration: Integrates your print devices into your universal security and event monitoring strategy.



Trellix™ Embedded Control:

Utilizes whitelisting to help prevent execution of unrecognized malware or tampering of existing firmware/applications.



Control Access:

Provides flexible authentication methods for PIN, username/password, or badge authentication accessibility, and display preferences.



CANON'S FUTURE-READY UNIFIED FIRMWARE PLATFORM

With Canon's Unified Firmware Platform (UFP), a common source code for firmware development embedded within the imageFORCE products, your device can benefit from regular updates—including additional functionality to existing models—and the latest features.



BUILT WITH A FOCUS ON SUSTAINABILITY

From product design to power use, Canon's commitment to the environment takes center stage with the imageFORCE series of printers. Features include:

Low Energy Consumption: A combination of highly efficient fusing technologies and low-melting-point toner helps to minimize power requirements and achieve low energy consumption.

Cardboard Packaging: Designed with more recycled materials than ever before and featuring both interior and exterior cardboard components.

Prestigious Certifications: ENERGY STAR® certified and Rated EPEAT Gold.



CONFIGURATION OPTIONS

imageFORCE 6170/6160/6155

Internal Output Options



Inner 2Way Tray-M1

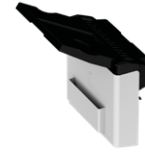
- 2-tray, 100-sheet capacity each tray



Inner Finisher-N1

- 2-tray, 550-sheet capacity
- Corner and double stapling up to 50 sheets
- Supports Staple-Free Stapling and Staple on Demand

Long Sheet Options



Long Sheet Catch Tray-D1



Long Sheet Feeding Tray-A1

Finishing Options



Staple Finisher Lite-A1*

- Staple capacity of up to 65 sheets
- Output capacity of up to 1,750 sheets
- Supports Staple on Demand



Staple Finisher-AB3

- 2-tray, up to 3,250-sheet capacity
- Corner and double stapling up to 65 sheets
- Supports Staple-Free Stapling and Staple on Demand



Booklet Finisher-A2 With Tri-Fold

- 2-trays, up to 3,250 sheet capacity
- Corner and double stapling up to 65 sheets
- Supports Staple-Free Stapling and Staple on Demand
- Booklet-making up to 20 sheet
- Built in C-Fold up to 6 sheets

Paper Folding Option



Paper Folding Unit-L1

- Offers Z-Fold



Paper Feeding Options



Cassette Feeding Unit-AY1

- Two 550-sheet cassettes
- Supports up to 12" x 18"
- 14 lb. Bond to 110 lb. Cover



High Capacity Cassette Feeding Unit-F1

- Up to 2,450-sheet capacity, Letter Only
- 14 lb. Bond to 110 lb. Cover



Paper Deck-F3

- Up to 2,700-sheet capacity, Letter Only
- 14 lb. Bond to 140 lb. Index



Cabinet Type-V

* Requires the following Unified Firmware Platform (UFP) versions: V4.1 or later: imageFORCE 6100 series

Please reference specification sheet and configurator tool on Canon's website for detailed specifications and supported configurations.

PRINTER SPECIFICATIONS

imageFORCE 6170/6160/6155

Technology/Type	OLED/A3 Monochrome Multifunction
Core Functions	Standard: Print, Copy, Scan, Send, Store. Optional: Fax, Up to 4 lines.
Print/Copy Speed (BW)	imageFORCE 6170 Up to 70 ppm ¹ (Letter) Up to 42 ppm (Letter-R) Up to 40 ppm (Legal), Up to 35 ppm (11" x 17") imageFORCE 6160 Up to 60 ppm ¹ (Letter) Up to 36 ppm (Letter-R) Up to 34 ppm (Legal) Up to 32 ppm (11" x 17") imageFORCE 6155 Up to 55 ppm ¹ (Letter) Up to 36 ppm (Letter-R) Up to 32 ppm (Legal) Up to 29 ppm (11" x 17")
Scan Speed (ipm, BW/CL, Letter)	Single-Scanning: 135/135 (300 x 300 dpi, Send), 80/80 (600 x 600 dpi, Copy) Double-sided Scanning: 270/270 (300 x 300 dpi, Send), 160/90 (600 x 600 dpi, Copy)
Memory	6.0 GB RAM
Solid-State Drive	Standard: 256 GB Optional: 1 TB
Warm-up Time	Quick Startup Mode: Approx. 4 Seconds ² From Sleep Mode ³ : Approx. 7 Seconds (imageFORCE 6170) Approx. 6 Seconds (imageFORCE 6160/6155) From Power On: Approx. 6 Seconds ⁴
Paper Capacity (Letter, 20 lb. Bond)	Standard: 1,200 Sheets Maximum: 6,350 Sheets
Supported Media Types	Paper Cassettes: Thin, Plain, Recycled, Eco, Color, Heavy, Bond, Transparency, Pre-punched, Letterhead, Envelope (Requires standard envelope feeder attachment) Multi-Purpose Tray: Thin, Plain, Recycled, Eco, Color, Heavy, Coated, Tracing, Bond, Transparency, Label, Pre-punched, Letterhead, Tab, Envelope
Supported Media Sizes	Upper Cassette: Letter, Executive, Statement-R, Envelopes [COM10 (No.10), Monarch, DL, ISO-C5], Custom Size (3-7/8" x 5-7/8" to 11-3/4" x 8-1/2") Lower Cassette: 12" x 18", 11" x 17", Legal, Letter, Letter-R, Executive, Statement-R, Envelopes [COM10 (No.10), Monarch, DL, ISO-C5], Custom size (3-7/8" x 5-7/8" to 12" x 18") Multi-Purpose Tray: 12" x 18", 11" x 17", Legal, Letter, Letter-R, Executive, Statement, Statement-R, Envelopes [COM 10 (No.10), Monarch, DL, ISO-C5] Custom size/Free Size (3-7/8" x 5-1/2" to 12-5/8" x 18"), Long sheet (3-7/8" x 18" to 12-5/8" x 51-1/4") ⁵
Supported Media Weights	Upper Cassette: 14 lb bond to 140 lb index (52 to 256 gsm) Lower Cassette: 14 lb bond to 110 lb cover (52 to 300 gsm) Multi-Purpose Tray: 14 lb bond to 110 lb cover (52 to 300 gsm) Duplexing: 14 lb bond to 140 lb index (52 to 256 gsm)
Dimensions (W x D x H)	24-3/8" x 28-1/2" x 36-7/8" (620 x 722 x 937 mm) ⁶
Weight	Approx. 207.2 lb (94 kg) ⁷
Environmental Standards	ENERGY STAR® certified EPEAT Gold

¹ When paper is fed from Upper Cassette, High Capacity Cassette, Feeding Unit-F1, or Paper Deck Unit-F3.

² Time from device power-on to when the copy icon appears and is enabled to operate on the touch panel display.

³ Time from exiting Sleep mode to when printing is operational.

⁴ Long Sheet Feeding Tray-A1 is required.

⁵ Time from device power-on until copy ready (not print reservation).

⁶ Includes main unit and standard ADF.

⁷ Includes consumables.

WHAT WILL YOU CREATE WITH THE POWER OF NEXT?



Canon

Trellix

**CANON
GENUINE**
TONER, CARTRIDGE
& PARTS



usa.canon.com/business

As an ENERGY STAR® Partner, Canon U.S.A., Inc. has certified this model as meeting the ENERGY STAR energy efficiency criteria through an EPA recognized certification body. ENERGY STAR and the ENERGY STAR mark are registered U.S. marks. Canon, imageFORCE, imagePASS, and the GENUINE logo are registered trademarks or trademarks of Canon Inc. in the United States and may also be registered trademarks or trademarks in other countries. Canon products offer certain security features, yet many variables can impact the security of your devices and data. Canon does not warrant that use of its security features or recommendations will prevent security issues. Customers should perform their own due diligence and consult with their security expert to determine what security features to implement for their organization. Nothing herein should be construed as legal or regulatory advice concerning applicable laws; customers must have their own qualified counsel determine the feasibility of a solution as it relates to regulatory and statutory compliance. Some security features may impact functionality/performance; you may want to test these settings in your environment. Trellix and the Trellix logo are trademarks or registered trademarks of Musarubra US LLC or its subsidiaries in the U.S. and other countries. All other referenced product names and marks are trademarks of their respective owners. All printer output images are simulated. All features presented in this brochure may not apply to all Series and/or products and may be optional; please check with your Canon Authorized Representative for details. Products shown with optional accessories. Subscription to a third-party cloud service required. Subject to third-party cloud service providers terms and conditions. uniFLOW is a registered trademark of NT-ware Systemprogrammierung GmbH. Canon U.S.A. does not provide legal counsel or regulatory compliance consultancy, including without limitation, Sarbanes-Oxley, HIPAA, GLBA, Check 21, or the USA Patriot Act. Each customer must have its own qualified counsel determine the advisability of a particular solution as it relates to regulatory and statutory compliance. Specifications and availability subject to change without notice. Not responsible for typographical errors.