

President's Message

Happy New Year!

The current economic environment is still creating a very busy construction industry. There are tremendous opportunities, and our backlog is the largest it has ever been, with a varied mix of project types. In 2024, we hired several people to strengthen the teams to execute this work. I look forward to seeing all these projects come to life over the next few years.

This edition includes the completed Holmes Convocation Center Parking Deck at Appalachian State University (ASU). When it was awarded, it was the largest design-build project administered by the NC State Construction Office. Our team greatly appreciates ASU for selecting New Atlantic+Little Diversified Architectural Consulting Firm for this project. The reverse showcases Elon University East Neighborhood Commons, the Institute for Advanced Learning and Research US Navy National Training Center, and the Mecklenburg County Skybridge.

These projects demonstrate our work's variety and ability to complete diverse and complex projects. I continue to be impressed with the dedication of our employees and partners that make these projects happen.

From all of us at New Atlantic, we wish you, your families, and your businesses great success in 2025.




John Morrison



Image provided by Appalachian State University.

Appalachian State University **Holmes Convocation Center Parking Deck**

As the Design-Build team with Little Diversified Architectural Consulting, New Atlantic constructed this six-level, 203,657 SF parking deck, providing over 600 parking stalls. The deck is located on the site of an existing parking lot adjacent to the Holmes Convocation Center.

The precast concrete structure features spandrel panels with thin brick veneer on three sides and sandblasted panels on the rear. It includes two precast concrete stairs and elevator shafts. The main stair, enclosed by perforated metal screening, has

LOCATION	DESIGNER	SIZE
Boone, NC	Little Diversified Architectural Consulting	New 203,657 SF

a gabled roof matching the campus' green color, while the corner stair and elevators have hipped standing seam metal panels.

Additional features include conditioned elevator and stair vestibules with glazed aluminum storefronts, hand-laid stone veneer wainscot, building and wayfinding signage, a blue light system, license plate recognition, security cameras, and infrastructure for future EV charging stations.



Completed Project

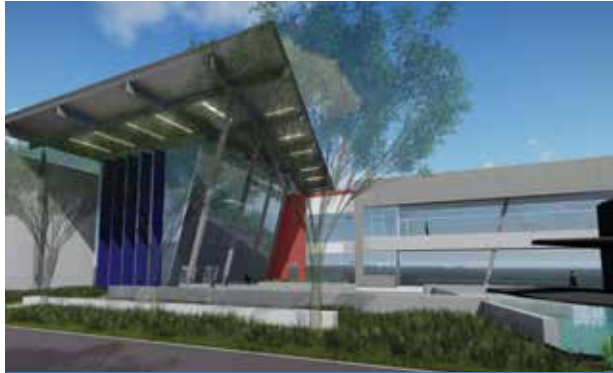
Elon University
East Neighborhood Commons

LOCATION	DESIGNER	SIZE
Elon, NC	Ayers Saint Gross	New 43,500 SF

New Atlantic served as the Construction Manager at Risk for this project, which involved constructing a four-story student residence hall with a single-story community forum assembly space. The 43,500 SF building was constructed with structural steel, metal studs, roof trusses, and a mix of cast stone and brick masonry veneer. It included site and utility improvements such as pedestrian walks, landscaping, and parking areas.

Adjacent to the three East Campus Housing buildings we constructed in 2018, the success of that project led to us being awarded this project.

The building, which opened in August 2024, features 90 residential rooms primarily for first-year students, along with faculty/staff apartments and office space. Central to the new building is the “forum,” a large multipurpose room for classes, meetings, and social events. The grand opening included a ceremony with a 10-year time capsule, symbolizing the community’s engagement and future aspirations.



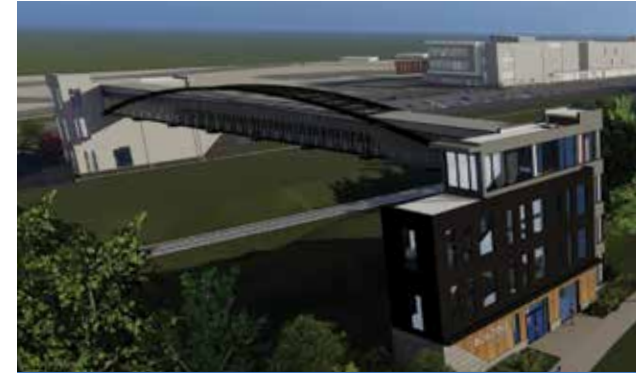
In-Progress Project

Institute for Advanced Learning and Research
US Navy National Training Center Building 2

LOCATION	DESIGNER	SIZE
Danville, VA	Dewberry Engineers, Inc.	New 32,349 SF

New Atlantic is constructing this 32,349 SF building that will house instructor classrooms and student breakroom areas for those teaching and attending classes in welding and metrology. The building, which features a 10% slope in the storefront glass and is connected to Building 1 by a catwalk on the second floor, is being built under a Single-Prime Construction contract.

This project follows the first building, which was completed in December 2024. We finished that project on schedule, allowing classes to begin on January 6, 2025.



In-Progress Project

Mecklenburg County
Skybridge (EBS-CRC and Eastway RRC)

LOCATION	DESIGNER	SIZE
Charlotte, NC	Neighboring Concepts	New 5,511 SF

New Atlantic is serving as the Construction Manager at Risk for the pedestrian bridge that will span over the existing railways of CATS, Norfolk Southern, and NC Railroad, enhancing pedestrian connectivity between the Ella B. Scarborough Community Resource Center, the Eastway Recreation Center, and the surrounding community.

The bridge will feature a span of approximately 220 feet between two towers, with a height of over 40 feet to meet railway easement requirements.

This project builds on our experience with rail projects across the state as we navigate the complex process of constructing projects in strict accordance with railroad construction and safety requirements.