



THE INTERNATIONAL
SEAKEEPERS
SOCIETY

DESTINY

2002 Inace Brazil Aluminum Yacht

VESSEL CONDITION & VALUE

1.1 Condition rating: ABOVE AVERAGE CONDITION.

VESSEL INFORMATION

1.20 Vessel Yr/Make/Model: 2002 Inace Brazil Aluminum Yacht.

1.21 Vessel name: DESTINY.

1.22 Manufacturer/Builder: Inace.

1.23 Designer: Arturo Barbello

VESSEL SPECIFICATIONS

1.25 Type: Plated Aluminum Long Range Cruiser.

1.26 Length overall (L.O.A.): 77' 00"

1.27 Beam: 19' 05"

1.28 Draft: 05' 10"

EXTERIOR HULL & BOTTOM INSPECTION

HULL EXTERIOR-SIDES

2.1 Construction material: Welded plate aluminum.

2.2 Hull cosmetics: The hull cosmetics are in above average condition. Minimal flare.

2.3 Stem: Minimal flare.

2.4 Side thru hull fittings: All of the above the waterline thru hull fittings are marine grade.

2.5 Port Lights: Inward opening portlights on the port and starboard sides, secure.

TRANSOM

2.6 Transom type: Conventional motoryacht transom.

2.7 Transom thru hull fittings: All of the above the waterline thru transom fittings are marine grade.

HULL BOTTOM

2.8 Construction material: Welded plate aluminum.

2.9 Thru Hull fittings: Marine grade below the waterline thru hull fittings.

PROPELLER(S)/SHAFT(S) / STRUT(S)

2.10 Prop(s) description: The two (2) bronze props.

2.11 Shaft size / material: Two (2) stainless steel prop shafts.

RUDDER(S)

2.12 Rudder type: Two (2) spade type rudders.

TOP DECK & SUPERSTRUCTURE

MAIN DECK & FITTINGS

3.1 Deck Surface: FRP Teak top deck over the welded aluminum plate deck.

3.2 Anchor/chain locker: Below deck.

3.3 Bow pulpit/rail: Polished stainless steel bow and side rail system, well secured.

3.4 Cleats & fairleads: Polished stainless steel cleats.

3.5 Sun pads: Tan sun pads.

3.6 Grab rail(s): Numerous polished stainless steel hand safety rails.

3.7 Cabin house window(s): Fixed and sliding side windows with tempered safety glass.

BRIDGE

3.8 Bridge: Well-appointed open flybridge area with a complete helm station, removable bimini top with a polished stainless steel support frame, abundant comfortable seating.

3.9 Helm station: Bridge outside helm station with wheel steering, full instrumentation, and electronics.

3.10 Seating: Abundant and spacious bridge deck seating.

3.11 Canvas:

3.12 Side rails: Polished stainless steel hand safety rails.

AFT DECK

3.13 Construction material: Teak decking over the welded aluminum plate decking.

3.14 Accessed by: Large sliding stainless steel framed doors from the salon.

3.15 Side rails: Polished stainless steel rails.

INTERIOR HULL & STRUCTURAL INSPECTION

HULL INTERIOR & STRUCTURAL COMPONENTS

4.1 Stringers: Hull stiffness provided by aluminum frames and stringers.

4.2 Bulkheads: Athwartships reinforcement enhanced by structural bulkheads and partitions.

ALL THRU HULL FITTINGS

4.3 Sea valves: Marine grade seacock ball valve(s) installed on all underwater thru-hull fittings.

4.4 Sea valves piping: Marine grade rubber hoses marine grade stainless steel clamps.

HELM & NAVIGATION ELECTRONICS

NAVIGATION ELECTRONICS

5.1 Helm Station: Wheel steering, full instrumentation, and electronics.

ENGINE INSTRUMENTS AND CONTROLS

5.2 Throttle and shift controls: Separate levers for each engine throttle and shift control at both helm stations.

5.3 Engine status: All engine instruments are OEM. (Original Equipment Manufacturer)

CABIN INTERIOR APPOINTMENTS

MAIN SALON

6.1 Style: Contemporary cabin salon with finely finished wood work and trim. Exceptionally well equipped and appointed.

6.2 Side windows: Large panoramic windows.

6.3 Light fixtures: Abundant cabin lighting.

6.4 Wet bar: Well-equipped and appointed bar area.

ENTERTAINMENT ELECTRONICS

6.5 Electronics: Extensive array of onboard high end electronics.

GALLEY

6.6 Galley: Modern full galley with a full complement of high end appliances.

DINETTE

6.7 Table type: Finely finished dining table and chairs.

BERTHS / STATEROOMS

6.8 Berths: Well-equipped and appointed Master & Guest staterooms.

Crew Quarters:

6.9 Crew Quarters: Well-equipped and functional crews quarters.

HEAD(S)

6.10 Heads: Lavishly equipped heads throughout the vessel.

AIR CONDITIONING

6.11 Manufacturer & Type: Reverse cycle systems throughout the vessel.

ELECTRICAL SYSTEMS

D.C. ELECTRICAL SYSTEMS

7.1 D.C. Voltage system: 12 and 24 volt systems installed.

7.2 Primary batteries: Marine grade batteries.

7.3 Battery selector switch: Marine grade battery switches.

7.4 Distribution panel: DC distribution panel.

7.5 Breaker(s)/fuse(s): Marine grade DC branch or switched breakers.

7.6 D.C. wiring: Marine grade DC wiring and connectors.

A.C. ELECTRICAL SYSTEMS

7.7 Shore power breaker: Marine grade shore power breaker at the main power distribution panel.

7.8 Distribution panel(s): AC distribution panel.

7.9 Branch breakers: Marine grade branch breakers.

7.10 A.C. wiring: Stranded copper marine grade boat cable and connections.

GENERATOR

7.11 Location/Manufacturer: Refit: Two (2) auxiliary oversized 55 KW each generator plants.

7.12 Generator test: The generator was not operated for purposes of this appraisal.

7.13 Type of installation: In an enclosed box, with insulation

7.14 Hoses and clamps: Marine grade hoses with marine grade stainless steel hose clamps.

7.15 Cooling system(s): Fresh water / heat exchanger cooled with water intake through lever action seacock.

7.16 Fuel supply lines: USCG approved type flex hose with marine grade stainless steel hose clamps.

7.17 Fuel filter(s): Generator mounted and remote mounted fuel water filters.

7.18 Engine mounts and beds: Four (4) mounts each unit.

7.19 Engine ground cable: Generator ground conductor cables.

7.20 Exhaust piping: Marine grade wet exhaust flex hose with marine grade stainless steel hose clamps.

7.21 Muffler: Fiberglass mufflers.

PROPULSION SYSTEM

MAIN ENGINE(S)

8.1 No./Type/Cylinders Refit with two (2) Caterpillar Model 3412 diesel inboards, twelve (12) cylinder each, 1400 HP each.

8.2 Raw water hoses: Marine grade rubber hoses with marine grade stainless steel hose clamps.

8.3 Cooling system(s): Fresh water / heat exchanger cooled.

8.4 Fuel supply lines: USCG approved flex hoses with marine grade stainless steel hose clamps.

8.5 Fuel filter(s): Engine mounted secondary fuel filters and a remote mounted primary fuel / water separator filters.

8.6 Engine mounts and beds: Four (4) each engine.

8.7 Engine ground cable: Ground cables for each engine.

8.8 Engine(s) operated: The engines were not operated for purposes of this appeal.

EXHAUST SYSTEM

8.9 Muffler(s): Fiberglass mufflers.

8.10 Piping/Clamps: Marine grade wet exhaust flex hoses and piping with stainless steel hose clamps.

TRANSMISSION(S)

8.11 Propeller shaft(s): The two (2) stainless steel prop shafts.

STEERING SYSTEM

9.1 Type: Hydraulic wheel steering.

9.2 Lines and fittings: Flex hydraulic lines with marine grade fittings.

TANKAGE / PLUMBING

FUEL TANK(S)

10.1 Tank capacity: 4,000 US Gallons.

10.2 Fuel supply lines: USCG approved type flex hoses with marine grade stainless steel hose clamps.

10.3 Diesel return line(s): USCG approved type flex hoses with marine grade stainless steel hose clamps.

FRESH WATER TANK(S)

10.4 Tank(s) capacity: 400 US Gallons.

WATER MAKING SYSTEM

10.5 Type: Refit: Two (2) freshwater makers. Reverse Osmosis type.

SAFETY EQUIPMENT

U.S.C.G. REQUIRED

11.1 Navigation lights: Approved International Navigation running lights installed.

11.2 Sound devices: Approve horn.

BILGE PUMPS

11.3 ELECTRIC PUMPS: Multiple adequately sized dewatering pumps.

GROUND TACKLE

11.4 Primary anchor: Adequately sized ground tackle.

AUXILIARY EQUIPMENT

MISCELLANEOUS EQUIPMENT & ACCESSORIES

12.1 Dock lines: Numerous dock lines.

12.2 Fenders: Numerous fenders.

TRANSMISSION(S)

8.11 Propeller shaft(s): The two (2) stainless steel prop shafts.

STEERING SYSTEM

9.1 Type: Hydraulic wheel steering.

9.2 Lines and fittings: Flex hydraulic lines with marine grade fittings.

APPRAISED FAIR MARKET VALUE AS DESIGNED, AS
BUILT, AS REFIT, AS EQUIPPED, AND AS FOUND

\$3,046,000 US DOLLARS

NOTE: The appraised valuation is solely a statement of our opinion of the value based on the above referenced sources. We assume no liability for the information used on which this valuation is based.

This appraisal report is solely for the purpose of determining a fair market value and should not be used to judge the seaworthiness of the vessel or its suitability for insurance.

NOTE: Institutions receiving such a donation gift which must have / provide the proper funding to maintain this type of yacht or the consequences may reflect in the value upon the eventual sale after the minimum three (3) years retention by the institution so as to protect the donor.

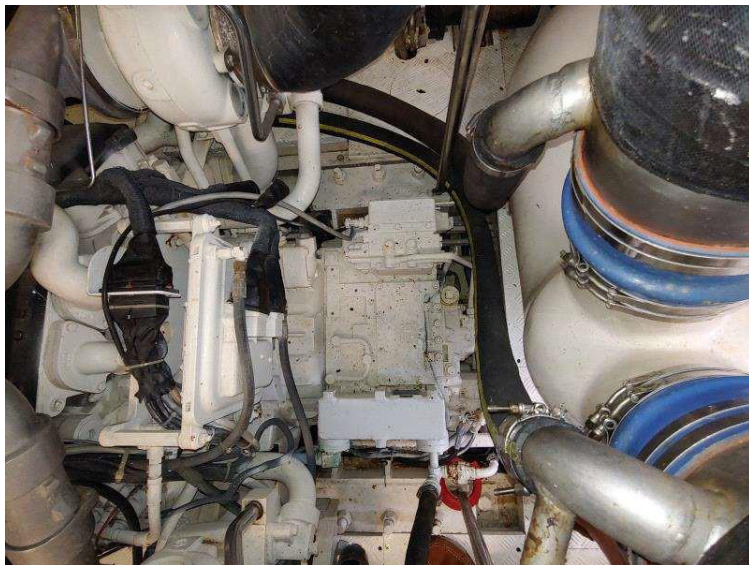
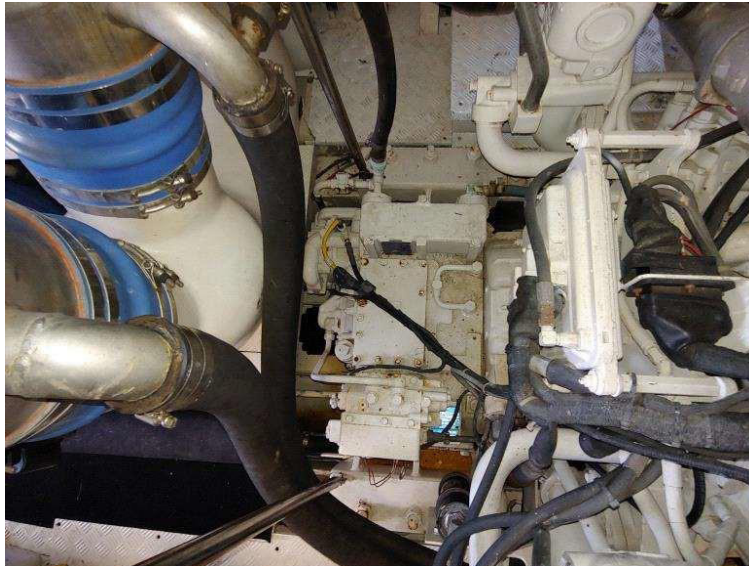
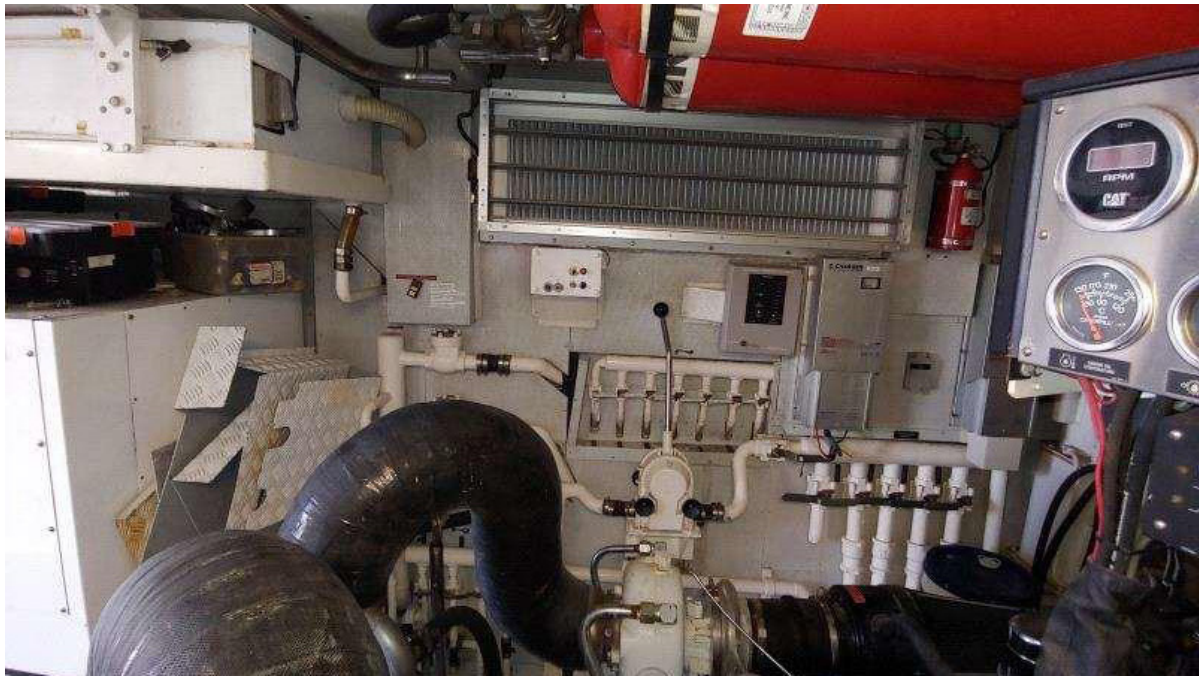
APPRAISAL PHOTOS

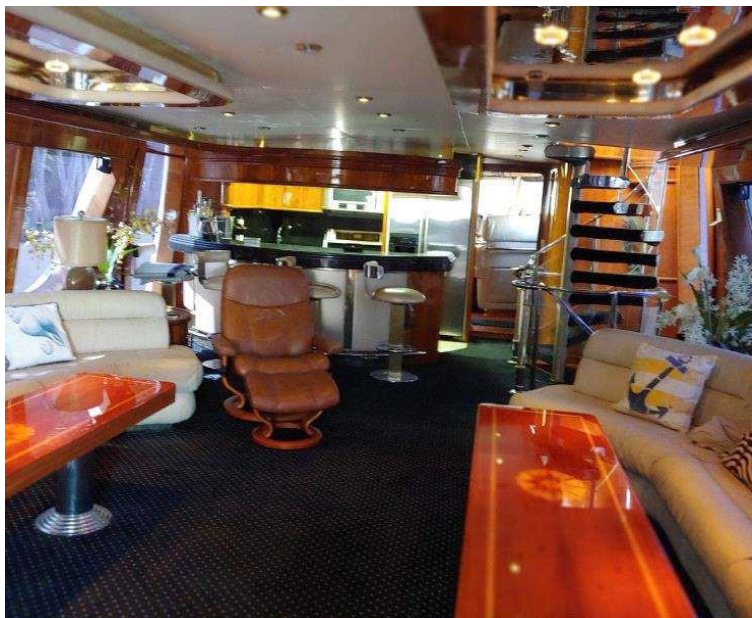




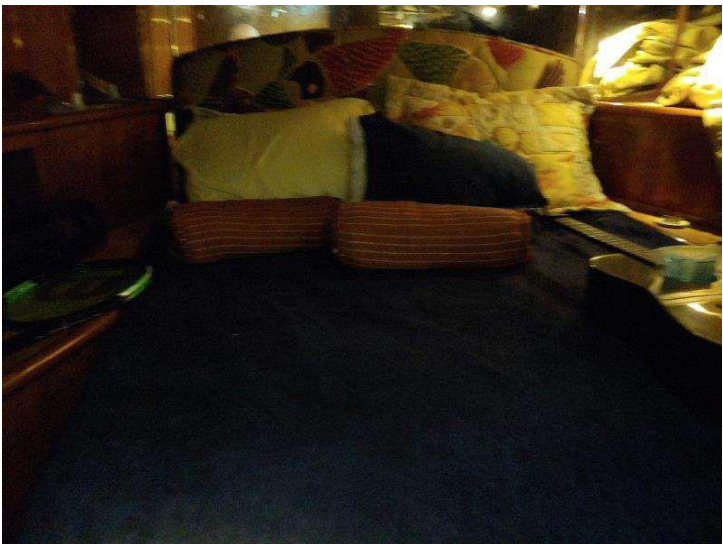






















The International SeaKeepers Society
255 Aragon Avenue, Third Floor | Coral Gables, FL
www.SeaKeepers.org | (O): 786.924.6209

