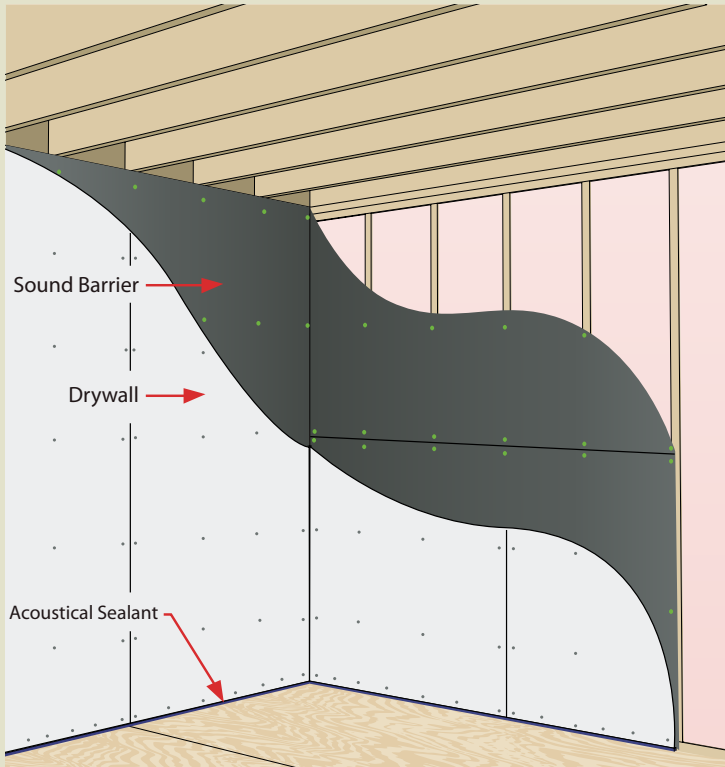


SOUNDPROOF BARRIER

WALLS/CEILINGS/FLOORS



A revolutionary version of MLV that is tear resistant, more durable, and readily available. Reinforced fabric facing on one side makes installation faster and easier- saving money! Suitable for installation under all hard floor coverings, reducing footstep noise



By stapling Soundproof Barrier FF directly to the studs, before drywall, noise energy will be absorbed, lowering the sound levels in the adjacent space.

Soundproof Barrier FF is also effective when used between layers of drywall, plywood or MDF.

Soundproof Barrier FF is a innovative, improved soundproofing product for walls, floors and ceilings.

Sound Isolation Company is a leader in the soundproofing business, constantly making improvements to our products. Soundproof Barrier FF is a thin, flexible and heavy product that absorbs noise and vibration. We added a reinforced fabric facing to improve tensile strength, durability and to save installation time/ money.

The fabric facing also makes installation a breeze using a simple roofing nailer, or roofing nails. The product can be loose laid under a variety of hard floors, absorbing footstep noise before it reaches the rooms below.

In-stock for quick shipping in 1lb/sft and 2lb/sft rolls, We can provide the right product, when you need it.

- ▶ Easy to use, widely recognized and available for shipment today from several US locations.
- ▶ Available in several weights and thicknesses; 4' x 25' rolls are in-stock ready to ship.
- ▶ Used and tested in 1000's of projects; you can count on great results.
- ▶ Available in a UL Certified version for 1-HR partitions.

Solve your noise problem. Call now to get it right the first time 888-666-5090

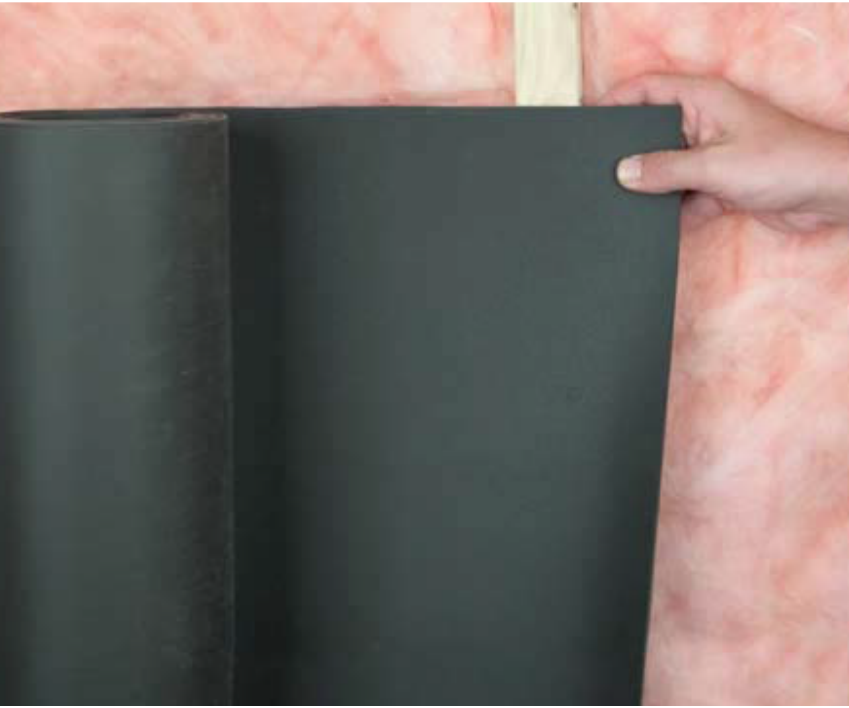
With Sound Isolation Company you will get the help you need: expert design, product selection and installation instructions. We have the experience you need for a partnership that will work.

SOUND [ISOLATION] COMPANY

so quiet, it's sic

(888) 666-5090 | Fax: (704) 504-1115
 info@soundisolationcompany.com
 www.soundisolationcompany.com

www.soundisolationcompany.com



SOUNDPROOF BARRIER SOLVES ALL YOUR NOISE CONTROL PROBLEMS IN ONE EASY STEP

- ▶ Install quickly with roofing nailer or roofing nails
- ▶ At 1/8" thick, SPB-FF's low profile will not affect doors/ windows Ideal for installation on wood or metal framing

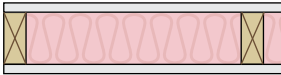
OFFICE NOISE, NEIGHBOR NOISE, MULTI-FAMILY

Use 1 pound/square foot Soundproof Barrier and a single layer of 5/8" drywall.

MORE DEMANDING PROJECTS LIKE HOME THEATER AND STUDIOS, INDUSTRIAL NOISE OR MIXED-USE COMMERCIAL

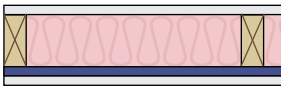
Use 2 pound/square foot Soundproof Barrier and a single layer of 5/8" drywall.

Standard Wall - STC: 37-39



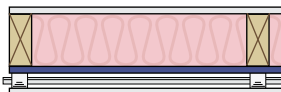
2"x4" Wood Studs
R-13 Insulation,
5/8" Drywall both sides

Soundproof Barrier - STC: 47-50

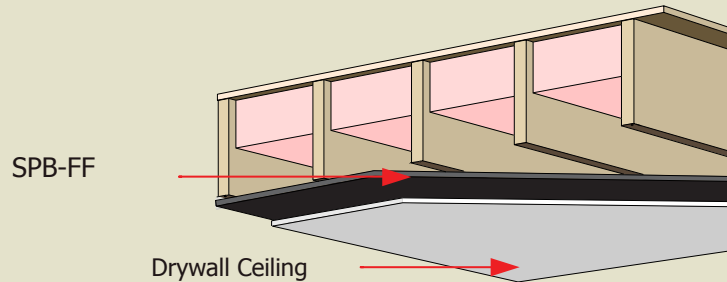
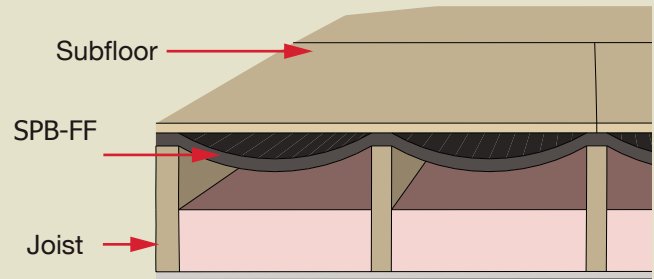
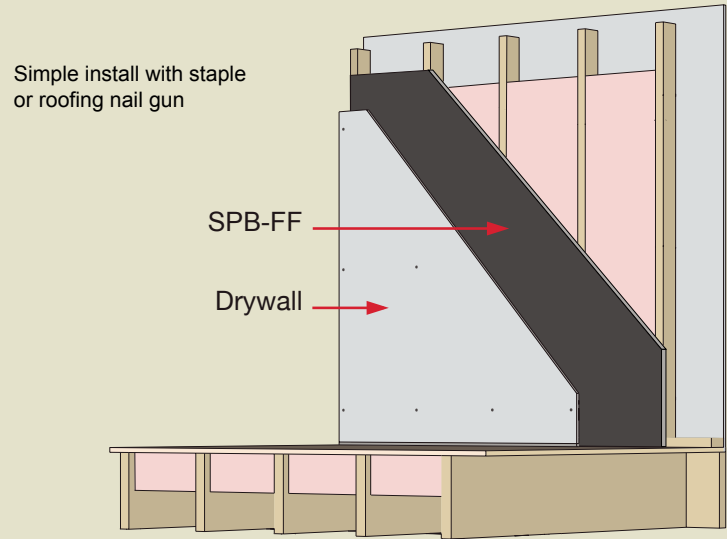


2"x4" Wood Studs
R-13 Insulation
Soundproof barrier one side
5/8" Drywall both sides

Sound Isolation Clips - STC: 58



2 x 4 wood studs
R-13 Insulation
Sound Isolation Clips
5/8" Drywall both sides



SOUND BLOCKING BY FREQUENCY

Weight	125	250	500	1K	2K	4K	STC
1.0 lb	16	17	23	29	34	37	27
2.0 lbs	19	22	27	34	38	43	32

Roll Size	1lb/sft 4' x 25'	2lb/sqft 4' x 25'
	Custom Rolls available with 4 week lead time	

SYSTEM REQUIREMENTS

- Foil Seam Tape
- Acoustical Sealant
- Putty Pads For Electrical Boxes

*Mass Loaded Vinyl is manufactured to weight specifications not thickness. There can be variations in thickness up to 10%, performance is based entirely on weight not the thickness of the product.

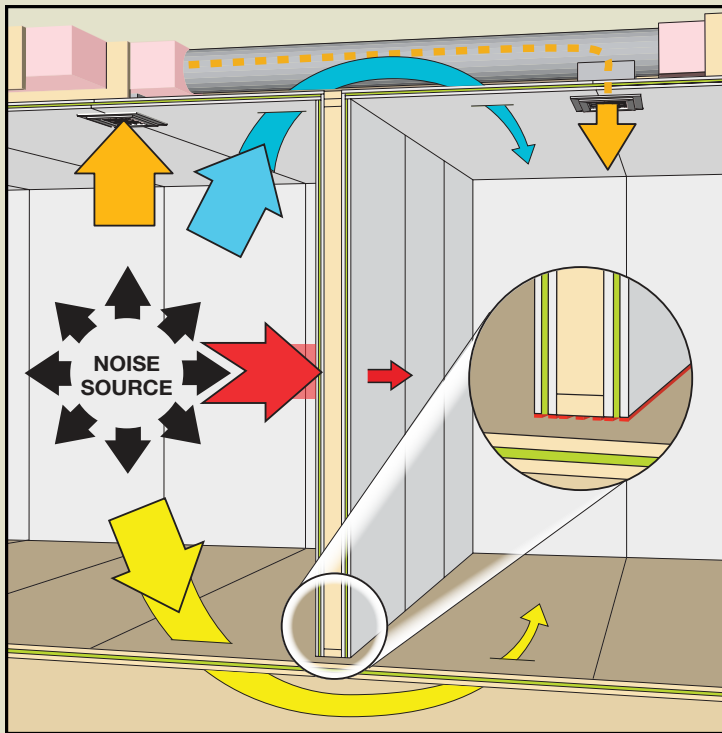
GREEN GLUE DAMPING COMPOUND

SOUNDPROOFING FOR WALLS, CEILINGS & FLOORS

SUPERIOR SOUNDPROOFING AT LOW FREQUENCIES

CAN BE USED OVER EXISTING WALLS AND CEILINGS

FAST EASY APPLICATION WITH LESS WASTE



■ Green Glue ■ SilenSeal Acoustical Caulk

Sound can reach the next room through several different pathways. Using Green Glue on walls, floors and ceilings greatly reduces this flanking noise. The damping provided by Green Glue will overcome almost every potential problem.

Green Glue is your soundproofing solution for walls, ceilings and floors

Simple and Fast Application

- ▶ No measuring or troweling
- ▶ Use between two sheets of standard drywall or plywood
- ▶ The ONLY product actually designed for use over existing walls and ceilings.
- ▶ Used 1000's of times for high performance walls, ceilings and floors.
- ▶ Reliable performance; Green Glue virtually eliminates any short circuits

Green Glue Notably Outperforms

- ▶ Quiet Sheetrock
- ▶ Soundboard
- ▶ Resilient Channel
- ▶ Double Drywall and Insulation

Solve your noise problem. Call now to get it right the first time 888-666-5090

With Sound Isolation Company you will get the help you need: expert design, product selection and installation instruction. We have the experience you need for a partnership that will work.

SOUND [ISOLATION] COMPANY

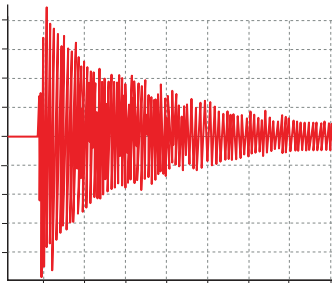
2900 WESTINGHOUSE BLVD. SUITE 106
CHARLOTTE, NC 28273
704 / 504 / 1127 PH
704 / 504 / 1115 FX
888 / 666 / 5090 TOLL FREE
WWW.SOUNDISOLATIONCOMPANY.COM

www.soundisolationcompany.com



Green Glue provides higher performance with reliable results

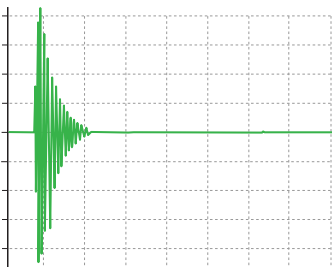
- ▶ **Easy Application:** One tube of Green Glue will dispense in 15 seconds using a standard quart size caulkungun.
- ▶ **Fast Installation:** Apply Green Glue in a random pattern; it is not necessary to have complete coverage to obtain excellent results.
- ▶ **Cost Savings:** No more wasting or piecing together expensive specialty soundproofing materials. Cut your drywall to the size you need and apply Green Glue.



Raw Drywall Assembly

Less Vibration, Less Noise

As airborne sound waves hit a wall, ceiling or floor, the energy it carries is actually vibration. This vibration energy travels through the assembly and into adjoining rooms where you hear it as sound. Green Glue works by converting the vibration energy traveling through the assembly into heat energy, this uses up the energy quickly. The greater the decrease in vibrational energy, the less sound you will be able to hear in the surrounding rooms.

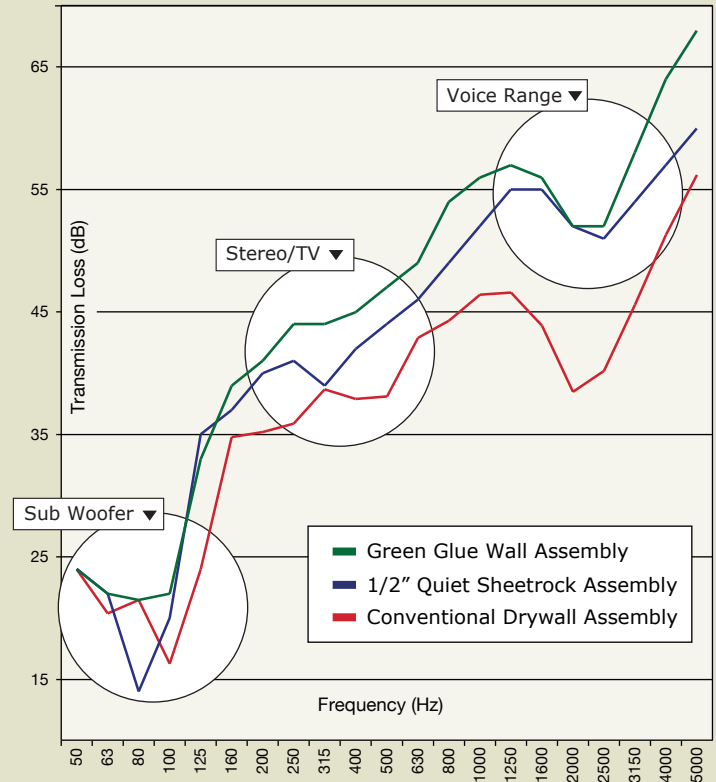


Green Glue Assembly

The adjacent charts clearly demonstrate the faster rate of vibration decay when Green Glue is used, compared to a wall when it is not used. By installing Green Glue in your wall, floor or ceiling, you will be able to create superior sound isolated, and quieter, rooms.

How quiet is your wall?

Below shows how much sound a wall will block or dissipate.



Sometimes you actually DON'T get what you paid for. See below cost analysis.

Material	Source Side, Framing, Receiving Side	STC	Cost
Green Glue	5/8" Drywall + 2 tubes GG + 5/8" Drywall, 2x4 wood studs 24" OC + R13 Fiberglass 5/8" Drywall	52	\$1.99 sqft
1/2" Quiet Sheetrock	1/2" Quiet Sheetrock, 2x4 wood studs 24" OC + R13 Fiberglass 5/8" Drywall	49	\$2.85 sqft
Soundboard	5/8" Drywall + 1/2" Soundboard, 2x4 wood studs 24" OC + R13 Fiberglass 1/2" Soundboard + 5/8" Drywall	46	\$2.10 sqft
Resilient Channel	5/8" Drywall + RC-1 Resilient Channel, 2x4 wood studs 24" OC + 3" Mineral Fiber 5/8" Drywall	43	\$2.00 sqft
Conventional	5/8" Drywall + 5/8" Drywall, 2x4 wood studs 24" OC + R13 Fiberglass 5/8" Drywall	42	\$1.05 sqft

Suggested Coverage

Good: 2 tubes per 32 sqft sheet = 192 sqft per case

Great: 3 tubes per 32 sqft sheet = 128 sqft per case

SOUNDPROOFING ACCESSORIES

Sealtight Putty Pads

SilenSeal Acoustical Caulk

RESILMOUNT

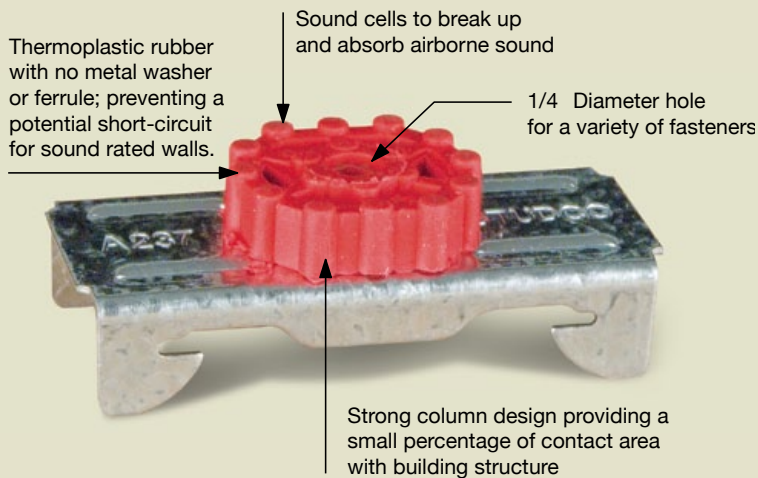
SOUND ISOLATION SOLUTIONS

PROVEN, RELIABLE SOUND CONTROL
 COST EFFECTIVE SOLUTION FOR WALLS/CEILINGS
 MULTI-FAMILY, SINGLE FAMILY, HOME THEATER

STC
63



Model A237R

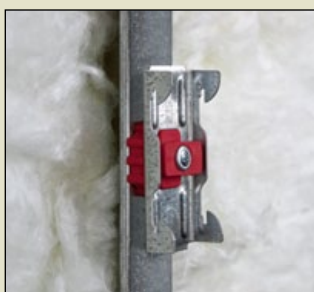


Unique patented thermoplastic rubber with sound cell design

Sound Isolation Company and Studco Building Systems have released a new range of patented sound isolation products for your walls and ceilings.

Acoustic control for airborne sound has become a major issue for architects and interior designers for high density apartment living, condos, townhouses, studios & theaters.

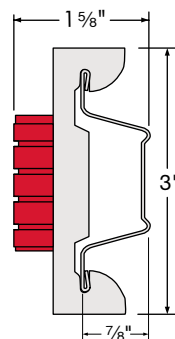
Resilmount soundproofing clips are compatible with standard drywall furring channel available locally. The common practice of using metal channel to improve wall and ceiling STC is dramatically improved with Resilmount by at least 7 STC points. Resilmount clips are the most cost effective noise control system because they isolate the structure from the interior partition.



Install on metal using #10 x 1 5/8" self-tapping screw



Use with 7/8" or 1 1/2" furring channel



US Distributor of all Resilmount Products

- ▶ Dead load 55 lbs each clip (max)
- ▶ Spacing of clip is 48" o.c. (max)
- ▶ Simple installation with screws or masonry anchors to any substrate.
- ▶ Use with 7/8" or 1 1/2" furring channel

SOUND [ISOLATION] COMPANY

2900 WESTINGHOUSE BLVD. SUITE 106
 CHARLOTTE, NC 28273
 704 / 504 / 1127 PH
 704 / 504 / 1115 FX
 888 / 666 / 5090 TOLL FREE
 WWW.SOUNDISOLATIONCOMPANY.COM



MODEL A237R



MODEL A96R



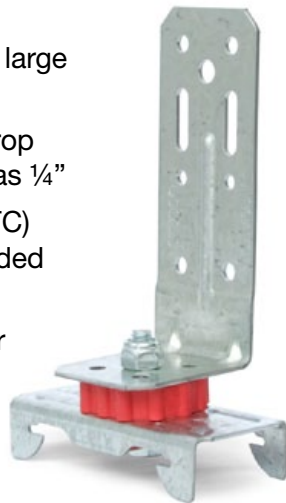
MODEL A237

www.soundisolationcompany.com



RESILMOUNT A96R

- ▶ Specialty brackets available for large project, with short lead times
- ▶ Model A96R offers a minimal drop in ceiling construction; as little as 1/4"
- ▶ Elimination of both airborne (STC) and footstep (IIC) noise is provided by Resilmount clips
- ▶ Achieve Luxury Ratings for your project, all in one easy step

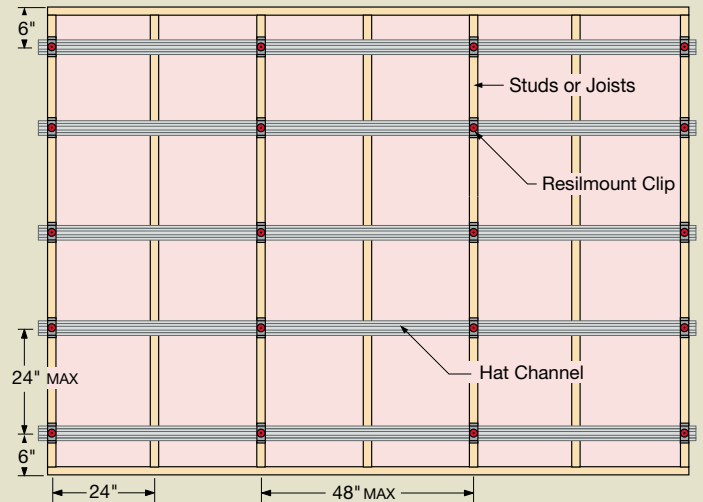
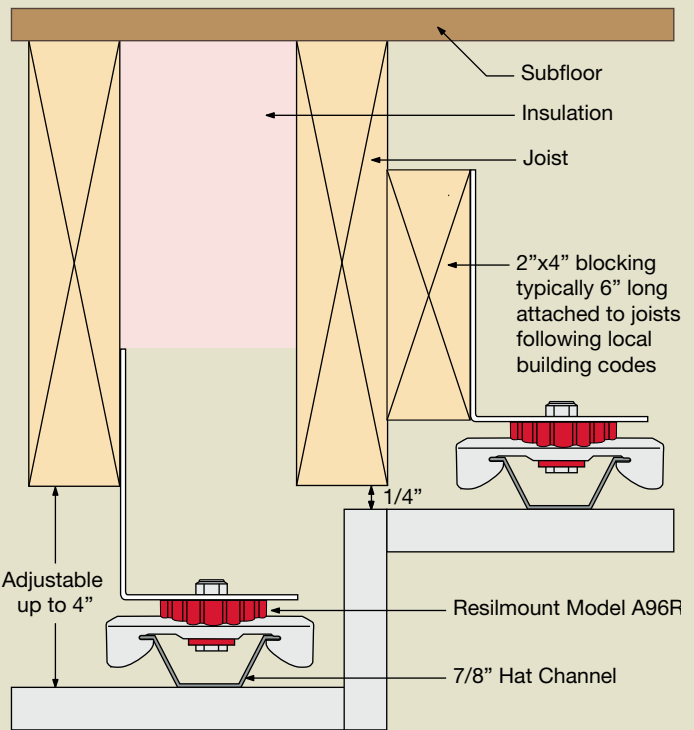


Clips are available for pick-up or shipment from:

- New York City, NY
- Charlotte, NC
- San Francisco, CA

Solve your noise problem. Call now to get it right the first time 888-666-5090

Do you need expert design, product selection and installation instruction? Sound Isolation Company has the experience you need for a partnership that will work. Call Now 888-666-5090



Wall dimensions: 12' wide x 8' tall
Clips Usage: 20 Resilmount Clips

SOUNDPROOFING ACCESSORIES

- SilenSeal Acoustical Sealant
- Electrical Box Extensions
- Sealtight Putty Pads
- Privacy Floor Gasket

RSIC NOISE CONTROL SOLUTIONS

RSIC PRODUCTS

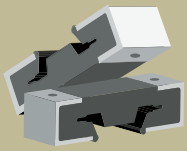
 <p>CLASSIFIED C UL US</p> <p>RSIC-1</p>	 <p>RSIC-1 Backer</p>	 <p>RSIC-1 Edge</p>	 <p>RSIC-1 Low Profile</p>
 <p>RSIC-1 Retro</p>	 <p>RSIC-1 ADM</p>	 <p>RSIC-1.5CRC</p>	 <p>RSIC-1 TTC</p>
 <p>RSIC-1 Ext 04</p>	 <p>RSIC-SI-1 Ultra</p>	 <p>RSIC-SI-CRC</p>	 <p>RSIC-SI CRC X2 LP</p>
 <p>RSIC-WHI</p>	 <p>CLASSIFIED C UL US</p> <p>RSIC-V</p>	 <p>RSIC-DC04</p>	 <p>RSIC-DC04 X2</p>
 <p>CLASSIFIED C UL US</p> <p>RSIC-U RSIC-U HD</p>	 <p>RSIC-2</p>	 <p>RSIC-CWB</p>	 <p>RSIC-GDS Kit</p>

MASTER DISTRIBUTOR

www.soundisolationcompany.com

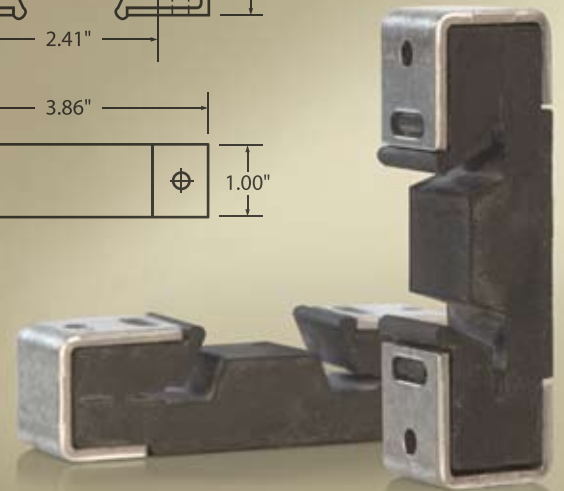
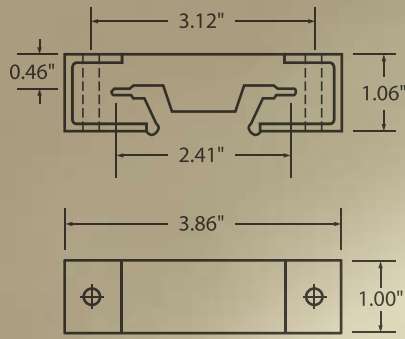
888-666-5090

sales@soundisolationcompany.com



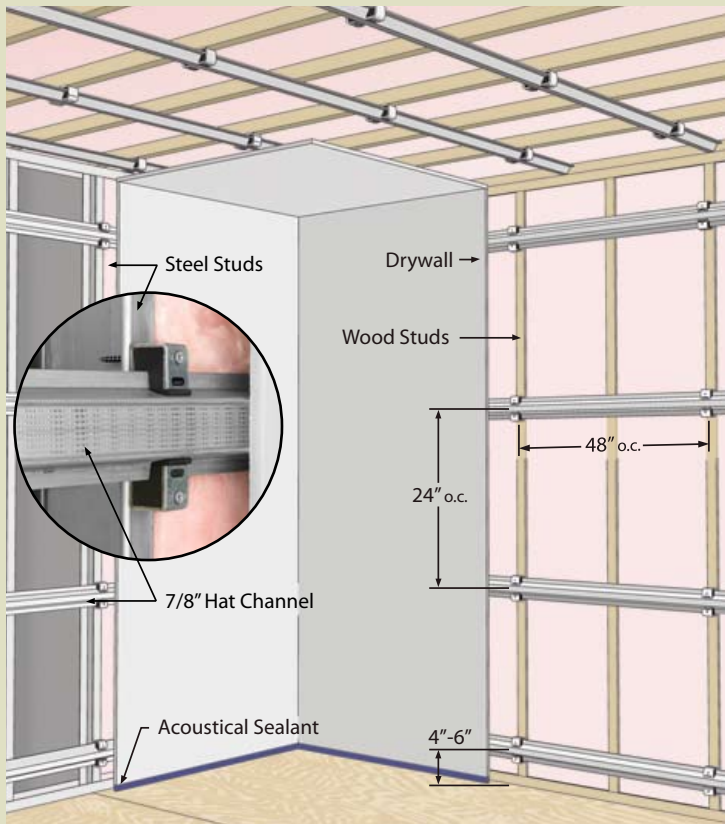
KINETICS ISOMAX ISOLATION CLIPS

Soundproof Walls and Ceilings



KINETICS ISOMAX CLIPS "FLOAT" WALLS AND CEILING PROVIDING MAXIMUM STC

STOPS LOW FREQUENCY NOISE THROUGH WALLS, AND PREVENTS FOOT STEP NOISE



Sound Isolation Clips are the easy and economical way to decouple your wall and ceiling to increase performance without the cost of staggered or double stud wall construction. Benefits include higher STC and IIC results at a lower installed cost and elimination of short circuit risk.

KINETICS ISOMAX CLIPS dramatically improve the soundproofing of any partition.

Privacy between spaces has become the #1 customer requirement in multi-family, commercial mixed use, and even luxury home projects. People now expect peace and quiet in the home and workplace.

Average performance will not be acceptable in most cases; minimal construction is a thing of the past. Sound Isolation Company has the right products and the expertise to make the creation of privacy a simple, reliable practice with no guesswork.

Soundproofing a ceiling or wall has never been so cost efficient or simple. You won't need any exotic sheetrock or tools. Installation is no different than what is being done already; the real difference is that this method provides a true quiet solution.

How & Why Sound Isolation Clips Work

Sound Isolation Clips break the mechanical connection. Sheetrock is attached to the channel, not the structure; measurable low frequency noise blocking requires this "float". A one-inch larger airspace, filled with standard fiberglass insulation adds to the STC performance at all frequencies. Sound isolation clips are attached with drywall screws. Locally available 7/8" hat channel, off-the-shelf sheetrock, mud and tape are the only materials you need to complete the job.

Call now to for a free consultation with our experts (888) 666-5090

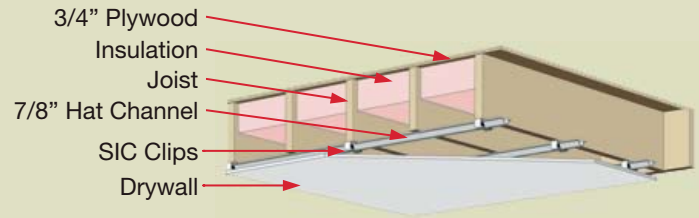
SOUND [ISOLATION] COMPANY

2900 WESTINGHOUSE BLVD. SUITE 106
CHARLOTTE, NC 28273
704 / 504 / 1127 PH
704 / 504 / 1115 FX
888 / 666 / 5090 TOLL FREE
WWW.SOUNDISOLATIONCOMPANY.COM

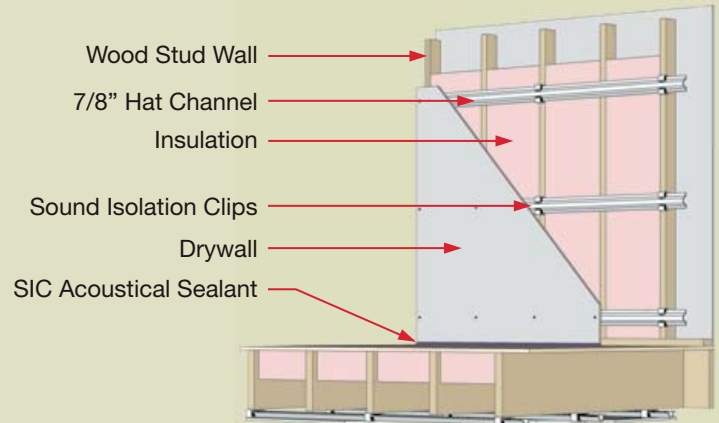
www.soundisolationcompany.com



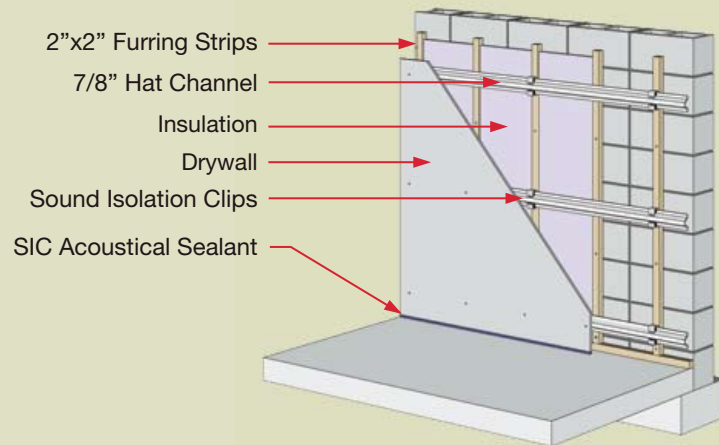
Floated Ceiling Assembly



Multi-Family, Commercial and Residential Floor/Wall Assembly



Masonry Walls Assembly



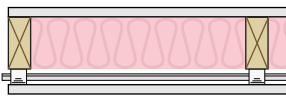
Sound Isolation Clips are the best value for proven, reliable soundproofing results in any wall or ceiling application. Call us today for a quote on your job (888) 666-5090

Benefits of Kinetics Isomax Clips

- ▶ Used with everyday building products, which are available locally at your home center.
- ▶ Better performance and lower installed cost than any other soundproofing product.
- ▶ No need for double stud, staggered stud, or double wall assemblies.
- ▶ No chance of short circuits that are commonly found in resilient channel installations.
- ▶ Available for immediate shipment to your jobsite.

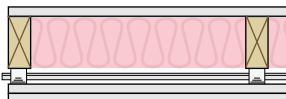
Lab Tested Assemblies:

Wall Assembly 1 - STC: 57



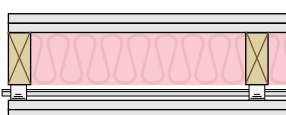
Wood stud partition, 2x4 16" O.C., R-19 insulation, and one layer of 5/8" gypsum on each side. Add Sound Isolation Clips (SIC Clips) and 7/8" hat channel on one side only.

Wall Assembly 2 - STC: 61



Adding one more layer of drywall on the Sound Isolation Clips side improves your sound isolation performance by 50%.

Wall Assembly 3 - STC: 64



One additional layer of 5/8" sheetrock, opposite SIC Clips side, outperforms double wall construction.

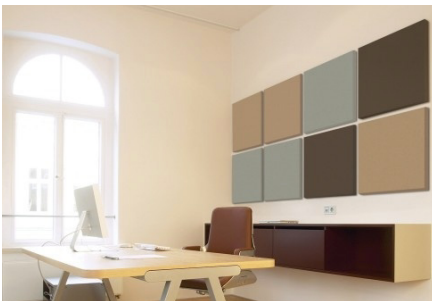
[FABRIC ACOUSTICAL PANELS]



Fabric Wrapped Wall Panels will greatly improve the acoustics in any environment. We manufacture each acoustical panel to fit your particular project; you select the color and fabric of your choice, we will provide analysis of your space and determine the number of panels required and best locations. Your panels will arrive ready to install, we provide the installation clips and detailed instructions to make the process simple and quick.

When you call we will quickly evaluate your space by asking a few simple questions and reviewing a couple of photos you provide. Using this information and our special software tools we provide the solution and pricing. We make the process very simple, the products will work, and you will see measurable improvements immediately. Improve your Call now for help 888-666-5090

Office Environments



Conference Rooms



Waiting Areas



SOUND [ISOLATION] COMPANY

Toll Free (888) 666-5090

S O Q U I E T , I T ' S S I C

sales@soundisolationcompany.com