

About ExaGrid

ExaGrid

- Largest independent vendor in the space
- Only “Visionary” in the 2015 Gartner Magic Quadrant

100% Focused on Disk-based Backup

- Highly differentiated architecture
- Winner of the most industry awards

Large Customer Base

- 10,000+ systems installed — worldwide
- 300+ published customer success stories



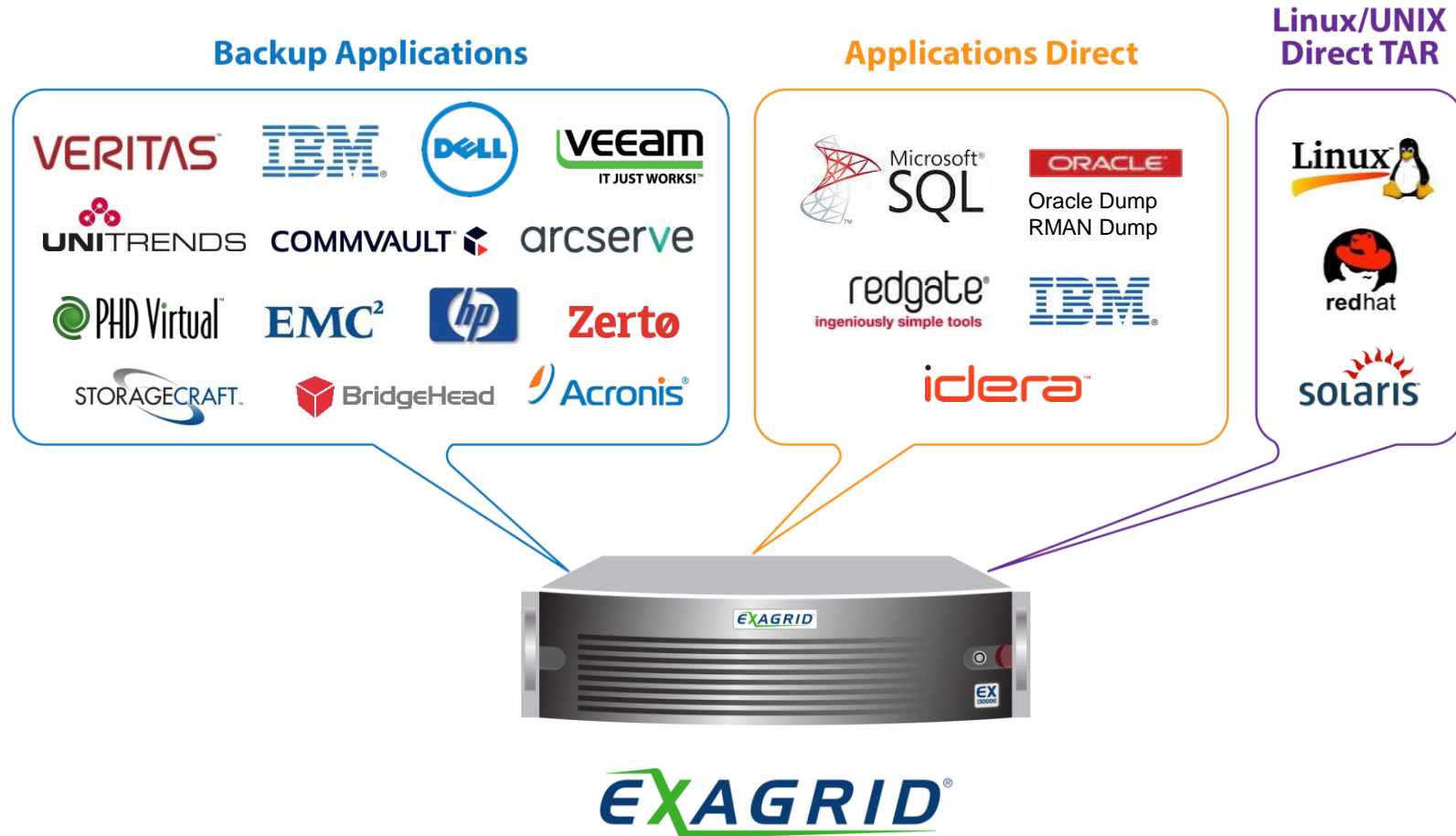
Gartner



STORAGE AWARDS
THE STORIES XIII

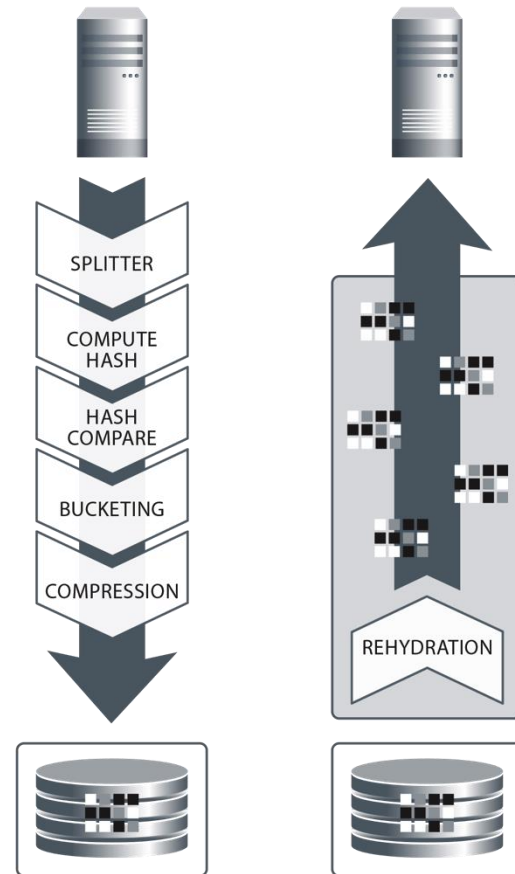


Works in Heterogeneous Environments



Inline Scale-up Appliances Fall Short

Inline Solution



Inline deduplication on the way to disk

- Slower ingest
- Longer backup window

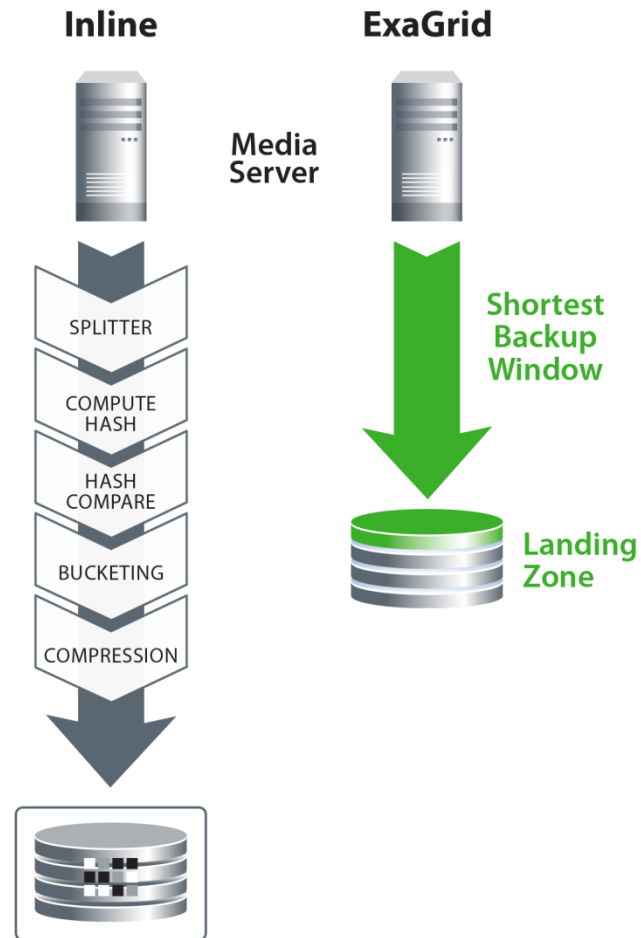
All data is stored in deduplicated form

- Slow restores, VM boots, and tape copies

As data grows, only disk is added

- Backup window grows as data grows
- Ultimately forces a costly forklift upgrade

Fastest Backups and Shortest Backup Window



Unique landing zone

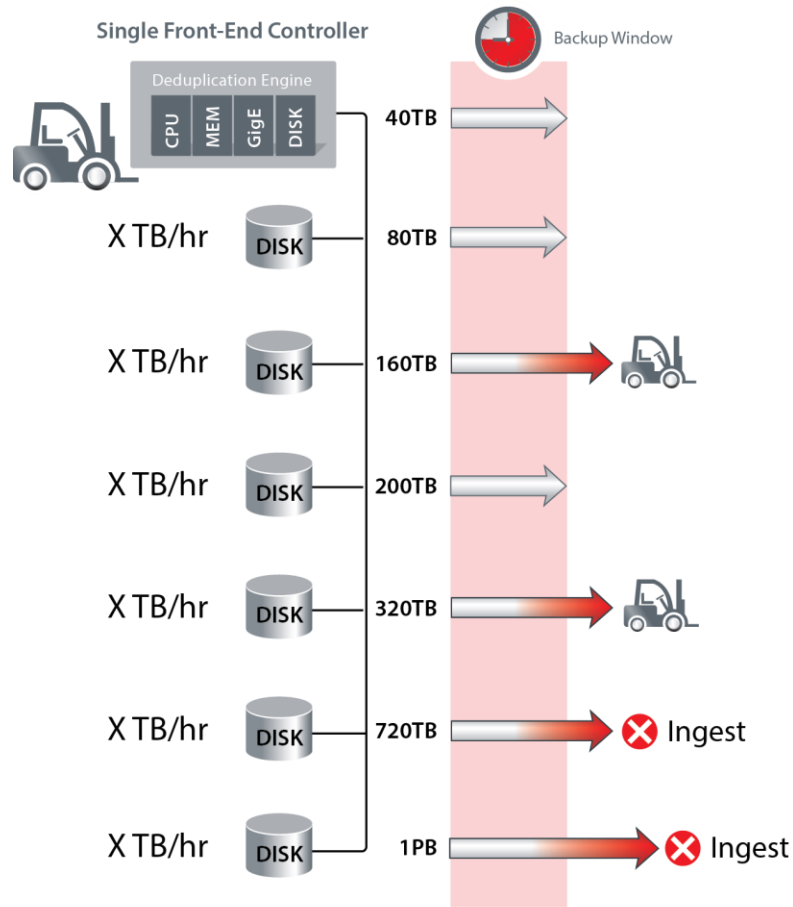
- Write backups directly to disk
- Avoid compute-intensive deduplication
- Adaptive deduplication

Benefits

- No inline processes to slow backups
- Fastest backups
- Shortest possible backup window
- Strong offsite RPO

Fixed Length Backup Window

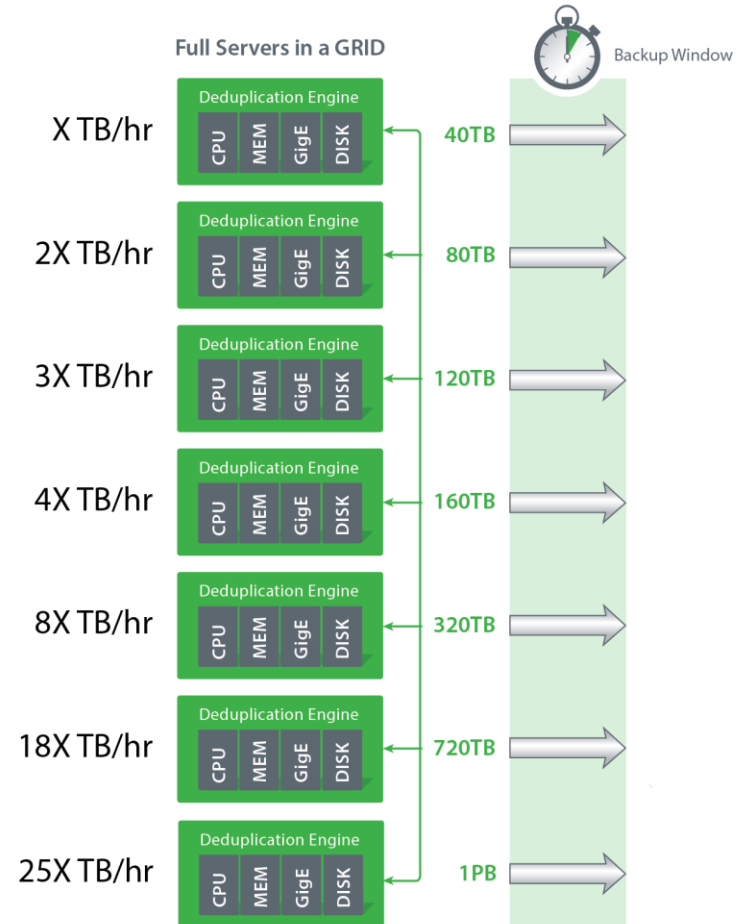
Scale-Up Architecture



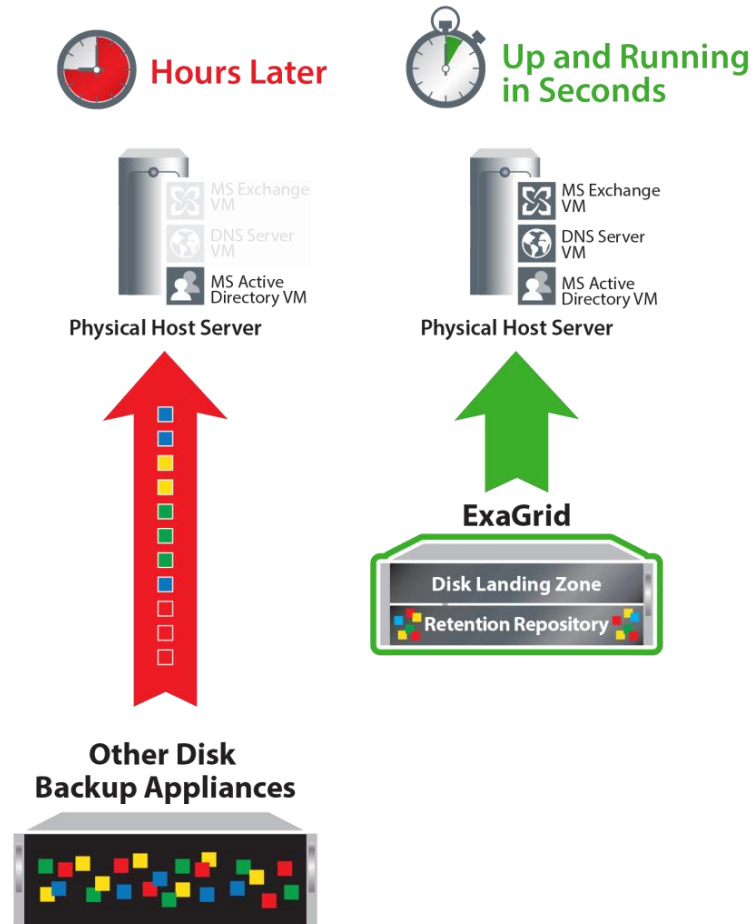
Out of storage and ingest - forklift upgrade

Ingest not keeping up with storage

ExaGrid Scale-Out GRID Architecture



Fast Restores, VM Boots in Seconds to Minutes



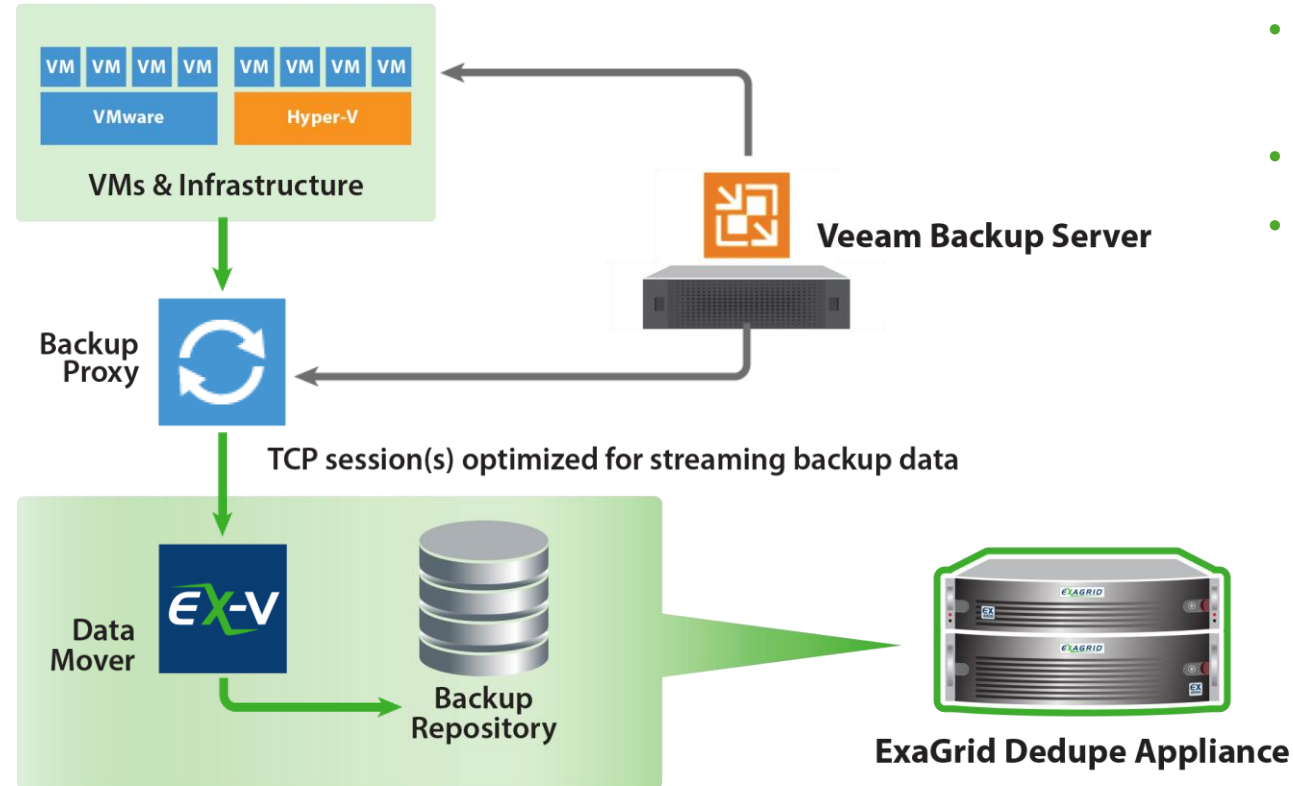
Unique landing zone

- Most recent backups are in unduplicated form
- Eliminates data rehydration

Benefits

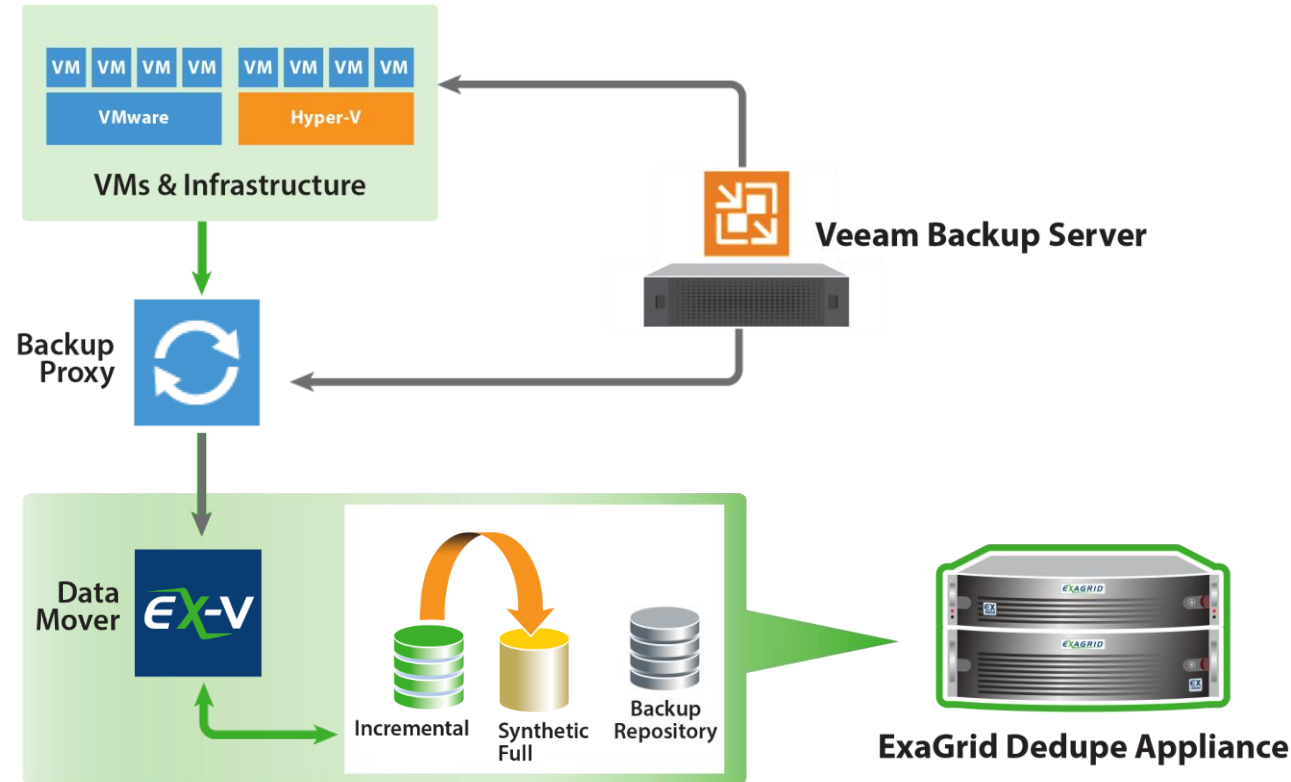
- Restores as fast as disk
- Tape copies as fast as disk
- VM boots in seconds to minutes

Integrated Veeam Data Mover – Faster Backups



- Veeam to Veeam vs Veeam to CIFS
- 30% faster ingest
- Faster VM boots

Integrated Veeam Data Mover – Faster Synthetic Fulls



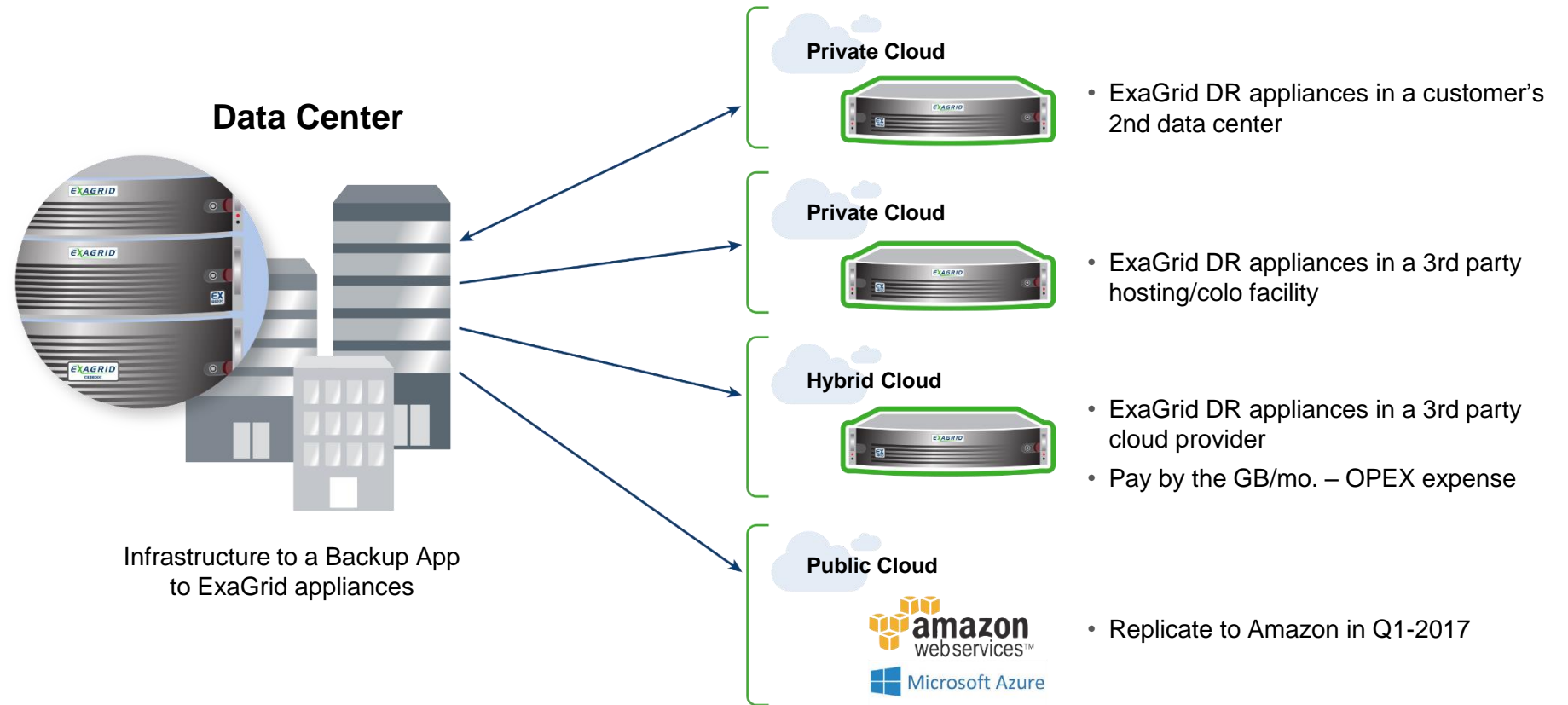
- Veeam data on the landing zone
- ExaGrid compute nodes
- Create synthetic full 6X faster than Veeam to disk
- Frees up Veeam backup server resources

ExaGrid Appliances in a Scalable GRID

25 Appliances in a Scale-Out GRID (One Petabyte Full Backup)

ExaGrid Model	Usable Capacity (TB)	Capacity for Weekly Fulls (TB)	Max Backup Throughput (TB/hr)
EX3000	6	3	0.72
EX5000	10	5	1.08
EX7000	14	7	2.40
EX10000E	20	10	2.40
EX13000E	26	13	2.40
EX21000E	44	21	4.32
EX32000E	63	32	7.56
EX40000E	78	40	8.00

DR Scenarios



- Adaptive deduplication deduplicates and replicates in parallel
- 50:1 WAN bandwidth efficiency
- Bandwidth throttle and WAN encryption for data replication
- Configure the disaster recovery site to all repository to save cost

Stress-free Redundancy and Security

Redundant Hardware

- RAID6 guards against simultaneous disk drive failures
- Redundant power supplies
- NIC teaming

Security

- Optional data encryption at rest
 - FIPS 140-2 compliant / 256-bit AES
 - Occurs at the drive level in nanoseconds
 - Does not impact backup performance
- WAN encryption for secure data transfer

Personal Touch - Maintenance and Support

Phone and Email Support

- Assigned level 2 customer support engineer
- Support staff are subject matter experts in backup applications

Customer Installable and Serviceable

- Self-installable with phone support and WebEx
- Self-serviceable hardware replacements, next business day delivery

All Releases Provided

- Point and full releases – includes all new features
- No license fees to track or renew

Health Status Monitoring

- ExaGrid monitors and notifies

No additional charge – All included in support program

