



User Instruction Guide for RoofGuard X-Press

Liftsafe Fall Protection Inc.
RoofGuard X-Press Instruction Manual

 RGC-XP-3.3

TABLE OF CONTENTS

Section	Page Number
1.0 Application	4
2.0 System Requirements	4
3.0 Components	5
4.0 System Layout	6
5.0 Installation	7
6.0 Detailed Inspection and Maintenance Log	11
7.0 Warranty	12
8.0 Notes	13



WARNINGS AND CONDITIONS

This system is part of a personal fall protection system. The user must read and follow all guidelines in this manual. These instructions must be provided to the user of this system. The user must read and understand these instructions or have them explained to them prior to using the system.

Alterations or misuses of this system or failure to follow instructions may result in serious injury or death. If you have any questions on the use or care of this system please contact Liftsafe Fall Protection Inc. at
1-800-977-2005.





1.0 APPLICATION

1.1 The RoofGuard X-Press system is designed to be installed on flat rooftops anywhere workers may be at risk of a fall from an elevated surface while working; rooftops, mezzanines, or around openings, when workers should be protected by a physical barrier from the hazard.



2.0 SYSTEM REQUIREMENTS

2.1 The RoofGuard X-Press system is designed to be used on flat roofs (up to 5% grade) where the baseplate can sit flat on the roof surface. Depending on the roof surface, a rubber pad, or ultra-light paving stone may be used under the base plates to facilitate safe/stable contact with the roof surface. As freestanding systems rely on friction between the baseplates and the roofing materials, baseplates **MUST NOT** be set on ice or snow or other substances which may permit excessive sliding. Users **MUST** clear the area prior to placing the RoofGuard baseplates. If no parapet or curb is present at the roof edge, contact LFP for a review of the application.



3.0 COMPONENTS

3.1 Baseplates are cast steel and hot-dipped galvanized for long-term outdoor use. Cone point stainless steel set screws secure the guardrail into the baseplates.

3.2 Pre-Fabricated rail sections are made from powder coated 1.9" OD steel pipe. Standard rail sections are 6-foot and 8-foot from center to center. Baseplate hole spacing should be taken into account when calculating required lengths.

Rails protecting users from a fall are typically 8-feet long powder coated yellow. The Back Rails are 6-feet long and powder coated grey. Yellow rails are used at the roof edge. Grey rails should NOT be within 6-feet of an exposed edge.

3.3 Rails are fitted with pilot holes in one direction to assist in engaging the set screw. For other angles or if the pilot hole does not line up with the set screw, a new pilot hole (1/4") should be drilled into the pipe to accommodate the BOTTOM baseplate.

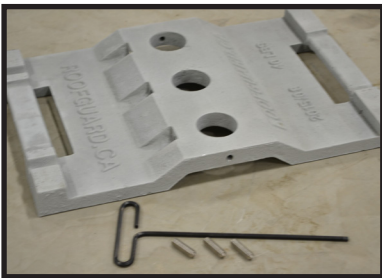


Figure 1: Baseplate with Set Screws and Assembly Tool

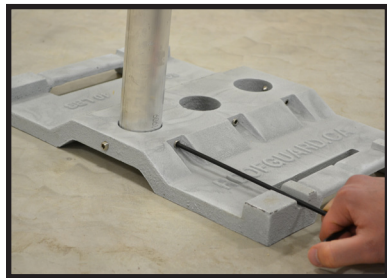


Figure 2: RoofGuard System During Assembly



Figure 3: Baseplate with Set Screws and Assembly Tool

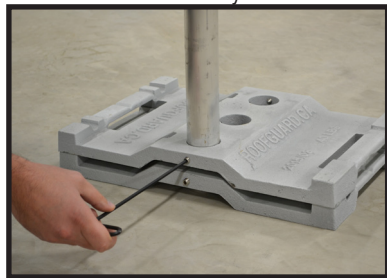


Figure 4: RoofGuard System During Assembly

4.0 SYSTEM LAYOUT

4.1 Install baseplates and rails on a flat, clean and dry surface. Clean the area where baseplates will be installed, if necessary, to ensure good contact with the roof surface.

4.2 As freestanding systems rely on friction between the baseplates and the roofing materials, baseplates MUST NOT be set on ice or snow or other substances which may permit excessive sliding. Users MUST clear the area prior to placing the RoofGuard baseplates. If no parapet or curb is present at the roof edge, contact Liftsafe Fall Protection Inc. (LFP) for a review of the application.

4.3 Each base location for the RoofGuard X-Press system shall have 2 baseplates stacked on top of each other (80lbs). The legs of the Express Rails will take up 2 of the large holes in the baseplate. FOR STANDARD CORNERS AND INTERMEDIATE SECTIONS ADJACENT HOLES MUST BE USED. Leaving a blank hole between rails is NOT permitted, as it introduces a gap which is not protected. If the gap is required to go around obstructions, the system shall be designed with this feature noted on a stamped layout drawing.

4.4 Each end of the system shall have a TIE-BACK rail perpendicular to the hazard (roof edge) extending 6-feet with 2 baseplates at the base of the TIE-BACK. The tie-back shall NOT be along a leading edge itself. TIE-BACK rails should not be within 6-feet of a parallel roof edge.

4.5 Intermediate tie-backs shall be placed at points no greater than 24-feet (3 rail sections) apart. A 6-foot rail and 2 baseplates shall make up the tie-back, and the center hole in the baseplate must be used for the tie-back.

4.6 In cases where the tie-backs must be shorter, the weights can be increased to accommodate the resistance required. YOU MUST CONSULT LFP AND OBTAIN AN ENGINEERED LAYOUT DRAWING TO INDICATE THE WEIGHT PLATE DISTRIBUTION FOR IRREGULAR INSTALLATIONS.

4.7 Where required, use of the toe-board adapter will allow the use of 2x4" lumber toe-boards to be placed between the baseplates. This will help prevent tools or materials from falling to a lower level.

5.0 INSTALLATION

5.1 When working near the roof edge, workers should be tied-off to an alternate fall protection system. Ideally workers should use a fall-restraint system utilizing a lifeline that will allow them to reach the edge, but not be long enough to be able to fall.

5.2 If toe-boards will be required, place the toe-board adapter on the top of the baseplate before placing the vertical posts into the desired holes.

NOTE: ADJACENT HOLES MUST BE USED WHEN TWO RAILS ARE PUT INTO THE SAME BASE. The installer may select which two holes allow the baseplate to be most easily placed, but the center hole must be used.

5.3 The RoofGuard baseplate has 3 holes, and for RoofGuard X-Press, the center hole is always used, except at the end of a tie-back, when any of the 3 holes is acceptable. When two posts share a baseplate, adjacent holes must be used. When a mid-system tie-back is used, 3 rails share the baseplate, in which case all 3 holes are used.

5.4 Once the baseplates are positioned as desired, insert the vertical rails. Secure the vertical rail to the Baseplate with the cone-point stainless steel set-screw.

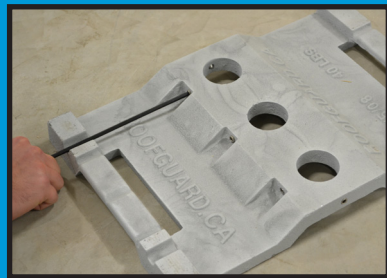


Figure 5 & 6: Installation of baseplates

NOTE: Only one set screw is used per rail leg. The two outside holes of the baseplate have 2 possible set screw positions, both may be secured, but only one is required, perpendicular to the rail it is holding.

5.5 Use a 3/16” hex drive bit (provided) or wrench, and torque to 25 ft.-lbs. All set screws for stacked plates must be secured against the wall of the vertical posts.

5.6 Once torqued, the set-screw can be ‘marked’ with the blue crayon (provided) to provide a visual indicator that the screw has been secured and warn of tampering.

5.7 If toe-boards are to be used, the lumber can be cut and placed under the toe-board adapter. The toe-board adapter can be lifted (sliding up the rails) to place the lumber, and then lowered back onto the top of the lumber. Using the three holes provided, secure the toe-board to the toe-board adapter with 3 screws.

5.8 The warning sticker should be placed in a visible location on the top rail with the install date and reference number to assist with inspections.

IMAGES OF A COMPLETE ROOFGUARD X-PRESS SYSTEM



Figure 7: Two Edge Rails with Tieback Rail



Figure 8: Corner Section: Both Tie-Back Rails Perpendicular to the Hazard Edge



WARNING

**Warning – Do NOT lean on, or climb on guardrails.
Guardrails MUST NOT be used as an anchor for fall restraint or fall
arrest, and shall not be used for hoisting or tie-off.
Attachment of banners / signs / equipment is not permitted.
Excess force applied to the top rail could cause tipping, resulting in
injury or death.**

OSHA Reference 29 CFR 1910.23 Guarding of floor and wall openings and holes
(a)(2) Every ladder-way floor opening or platform shall be guarded by a
standard railing with standard toe-board on all exposed sides (except at
entrance to opening), with passage through the railing either provided with a
swing gate or offset so that a person cannot walk directly into the opening.





7.0 LIFTSAFE FALL PROTECTION WARRANTY

Equipment offered by Liftsafe Fall Protection (LFP) is warranted against factory defects in workmanship and materials for a period of one year from date of installation or use by the owner, provided that this period shall not exceed 18 months from date of shipment. Upon notice in writing, LFP will promptly repair or replace all defective items. LFP reserves the right to elect to have any defective item returned to its plant for inspection before making a repair or replacement. This warranty does not cover equipment damages resulting from abuse, damage in transit, or other damage beyond the control of LFP. This warranty applies only to the original purchaser, and is the only one applicable to our products, and is in lieu of all other warranties, expressed or implied.



Liftsafe Fall Protection Inc.

409 Harmony Road
Ayr, Ontario N0B 1E0

TF: 1(800) 977-2005
T.: (519) 896-2430
F.: (519) 896-2085

E.: info@liftsafeinspections.com
W.: www.fallsafetysolutions.com