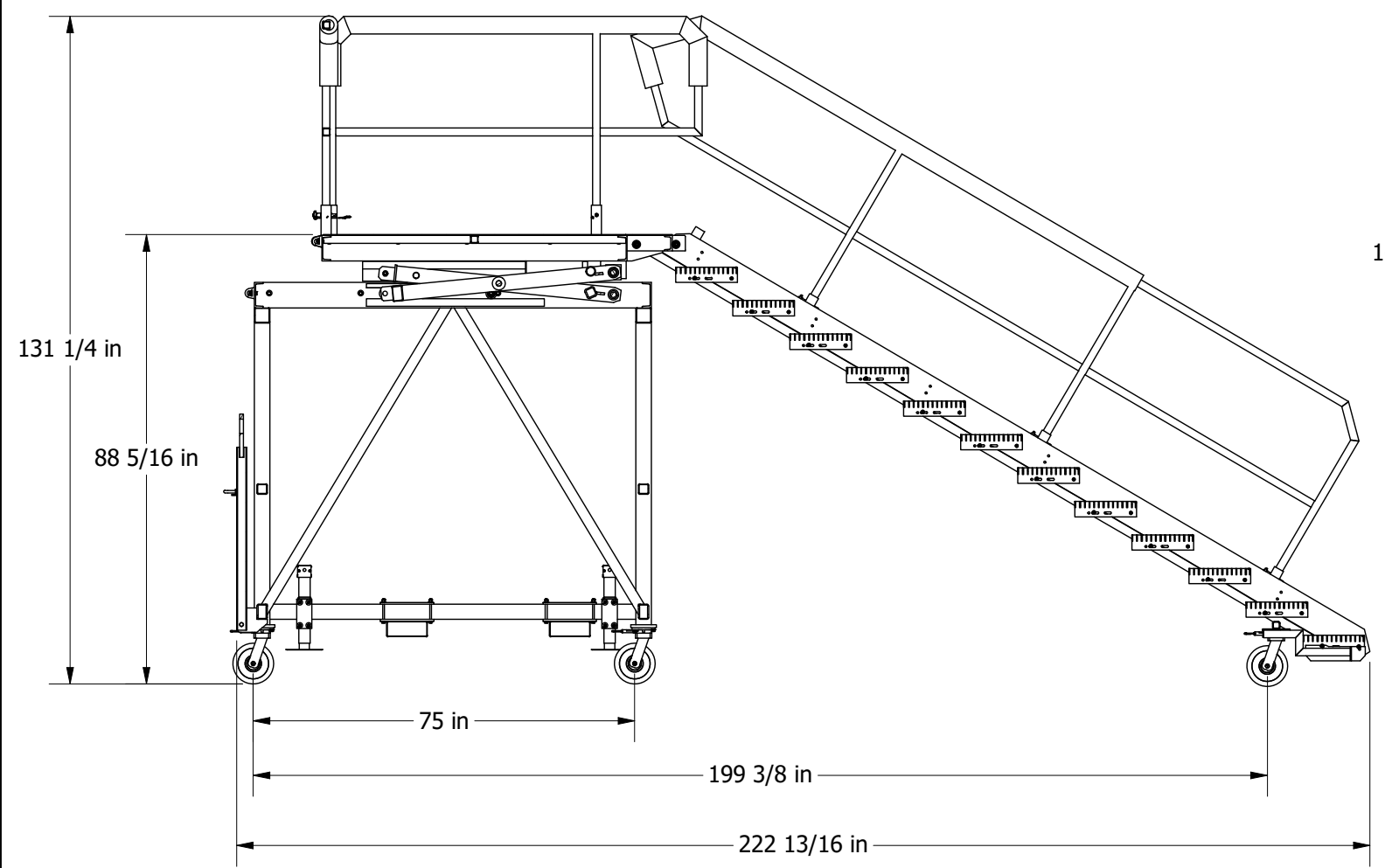
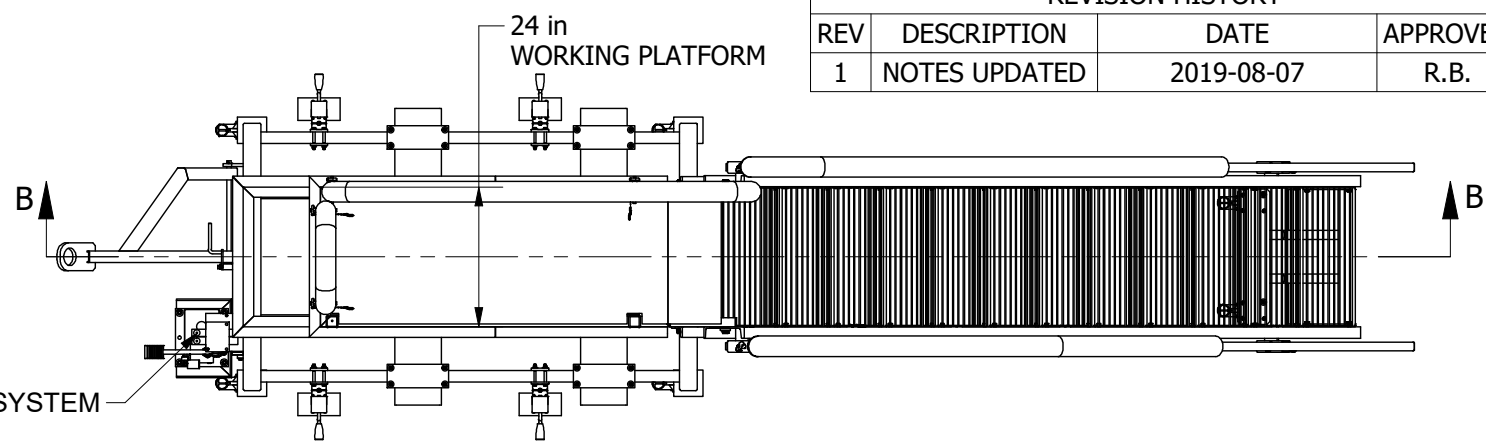
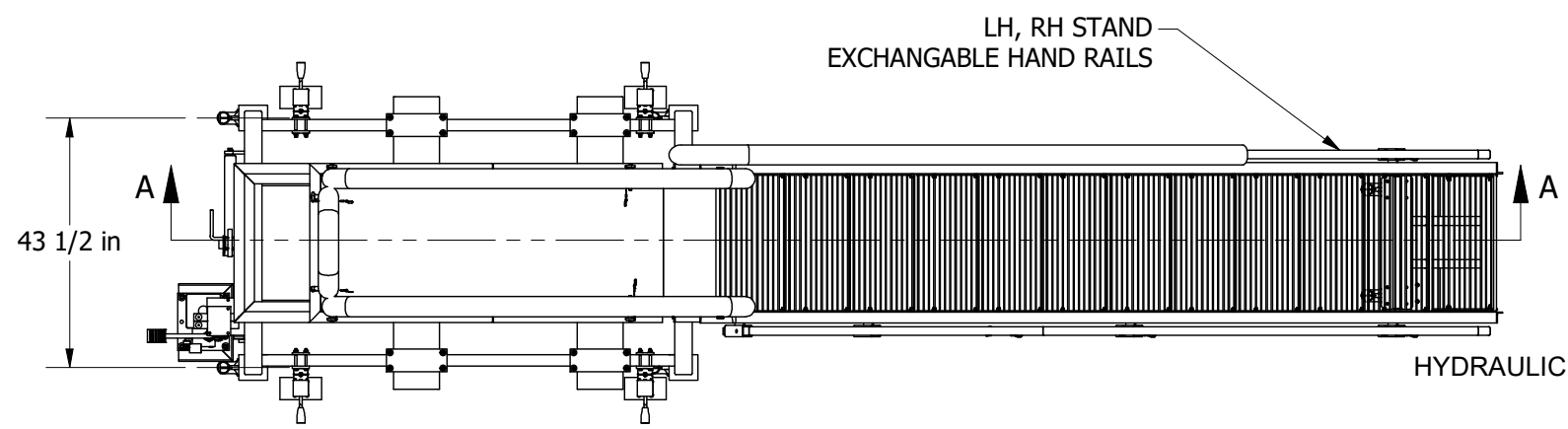
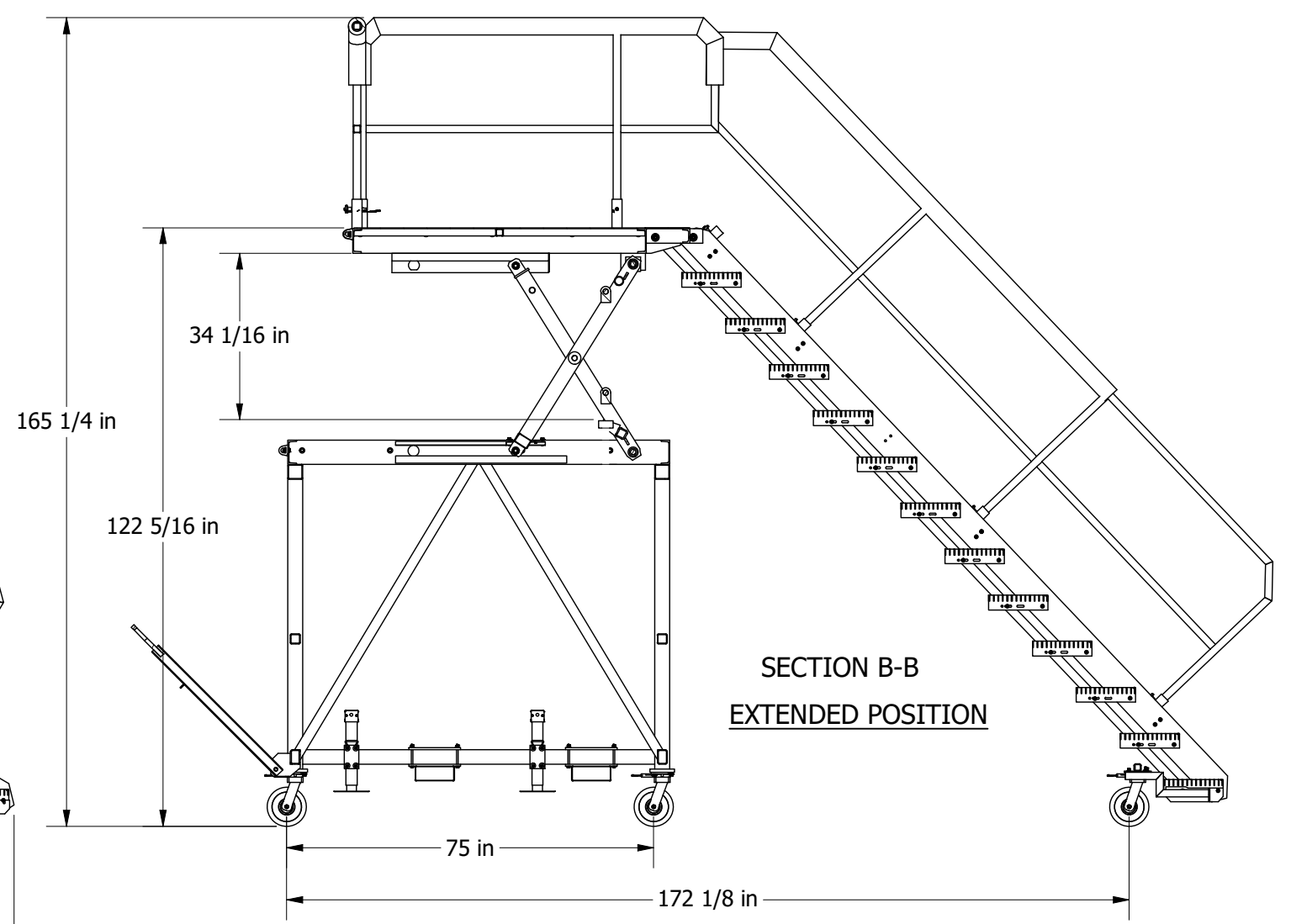


REVISION HISTORY			
REV	DESCRIPTION	DATE	APPROVED
1	NOTES UPDATED	2019-08-07	R.B.



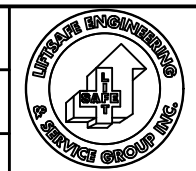
**SECTION A-A**  
**COLLAPSED POSITION**



**SECTION B-B**  
**EXTENDED POSITION**

TARE WEIGHT: 1500 LBS.  
WLL: 330 LB  
MAX. TOWING SPEED: 5 MPH  
WORKING PLATFORM: 2 FT - (2) PERSONNEL TO STAND  
WORKING PLATFORM RAISED BY MANUAL ACTUATION OF HYDRAULIC SYSTEM

Part No.  
Materials.  
Work Order No.  
Next Assembly.

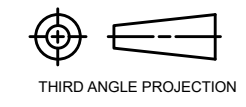


**LIFTSAFE ENGINEERING & SERVICE GROUP INC.**  
[www.liftsafeinspections.com](http://www.liftsafeinspections.com) T. (519) 896-2430/1-800-977-2005,  
Email: [info@liftsafeinspections.com](mailto:info@liftsafeinspections.com) F. (519) 896-2085

Customer & Location: Project: DF071562-01

Checked By: Date: Description:  
Designed By: Date: SIZE SCALE: **N.T.S** DWG NO:  
Drawn By: D.M. Date: 11/26/2018 B SHEET 1 OF 1 **V03570** REV 1

THIS DRAWING AND THE INTELLECTUAL INFORMATION ON THIS DRAWING ARE THE PROPERTY OF LIFTSAFE ENGINEERING & SERVICE GROUP INC. AND MAY NOT BE REPRODUCED OR USED IN ANY MANNER WITHOUT OUR WRITTEN CONSENT



Tolerance Unless Noted Otherwise				
ANGLE	FRACTION	DECIMAL PLACES	INCHES	MILLIMETRES
± 1/2°	± 1/16	.XXX	± .005	± 0.1
		.XX	± .010	± 0.3
		.X	± .020	± 0.5