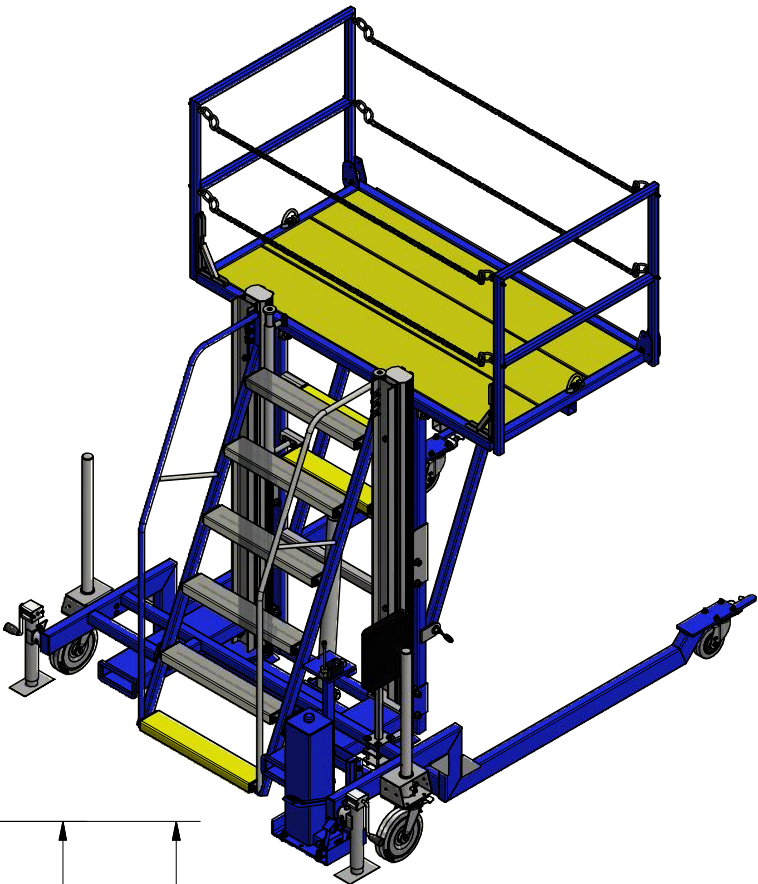
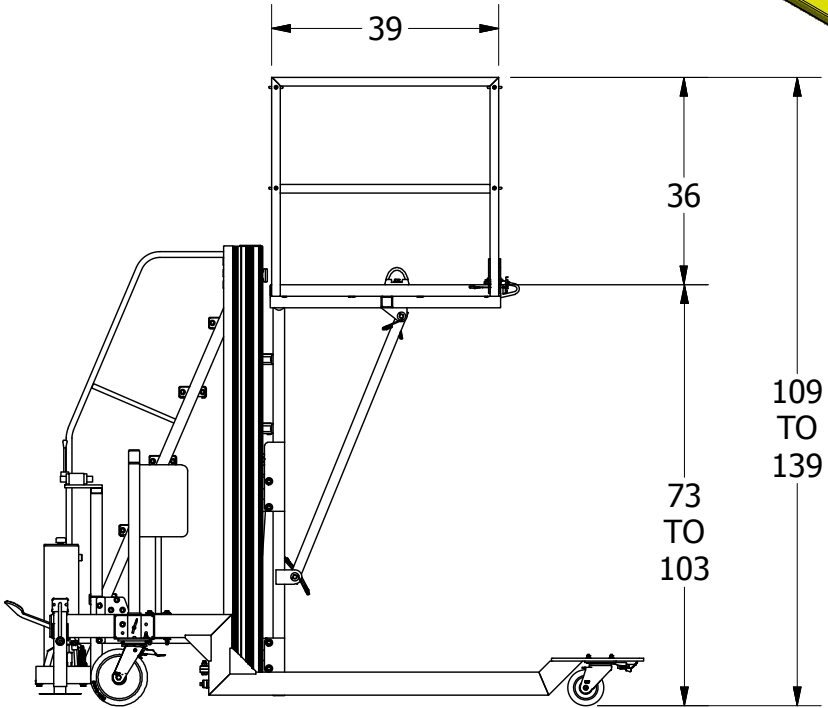
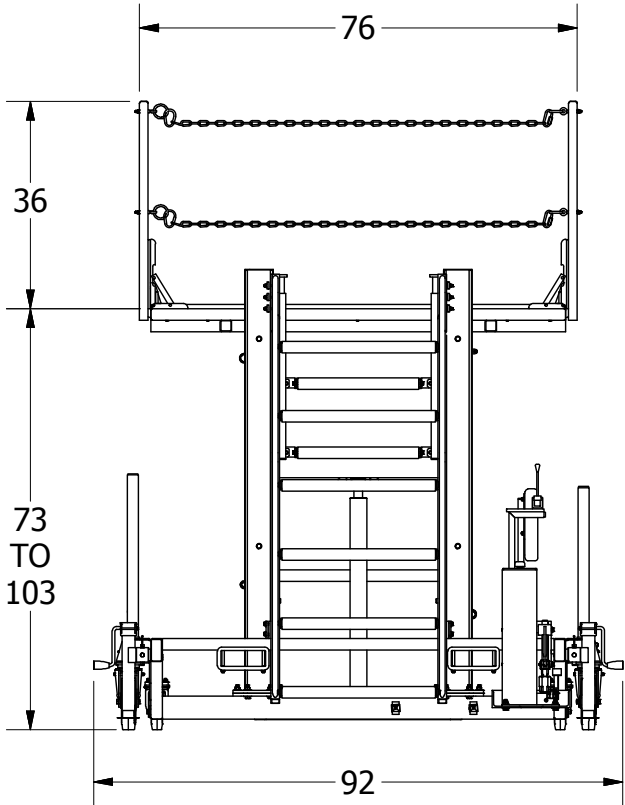
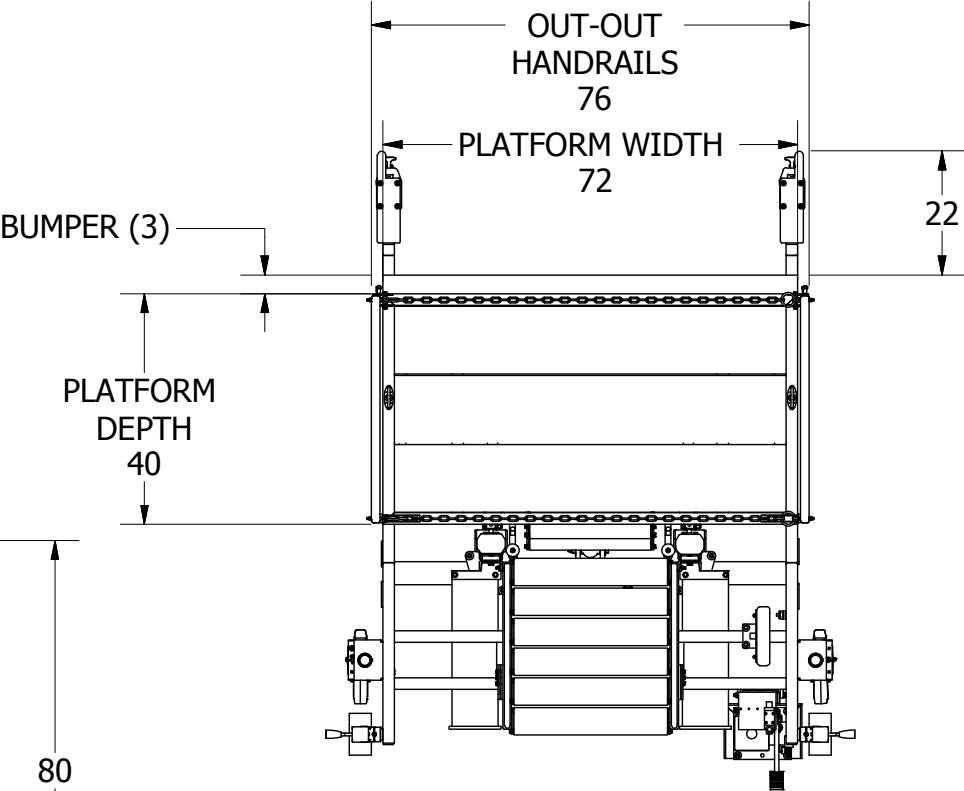
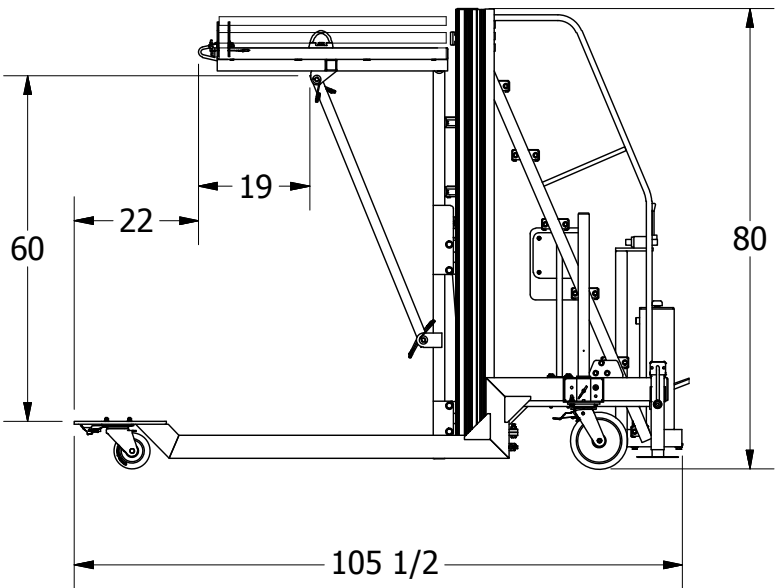


	INSP.	
	FAB.	
SIGNATURE	X	DATE

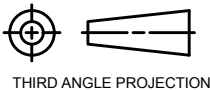
REVISION HISTORY			
REV	DESCRIPTION	DATE	APPROVED
3.0	ISSUED FOR PRODUCTION	19/05/2016	C.R.




WEIGHT: 1,400 LBS. APPROX.

- GENERAL NOTES:
- 1) ALL STRUCTURAL STEEL SECTIONS SHALL CONFORM TO CSA G40.21-50W
 - 2) ALL STEEL PLATE AND BAR SHALL CONFORM TO CSA G40.21-44W
 - 3) ALL WELDING SHALL CONFORM TO CSA W59 AND BE UNDERTAKEN BY A WELDER FULLY APPROVED BY THE CANADIAN WELDING BUREAU TO CSA W47 DIVISION
 - 4) ALL WELDS TO BE SMOOTH AND FREE OF BURRS
 - 5) ALL WELDS TO BE 1/4" CONTINUOUS FILLET OR 1/4" EFFECTIVE THROAT FLARE BEVEL U.N.O.

THIS DRAWING AND THE INTELLECTUAL INFORMATION ON THIS DRAWING ARE THE PROPERTY OF LIFTSAFE ENGINEERING & SERVICE GROUP INC. AND MAY NOT BE REPRODUCED OR USED IN ANY MANNER WITHOUT OUR WRITTEN CONSENT



Tolerance Unless Noted Otherwise				
ANGLE	FRACTION	DECIMAL PLACES	INCHES	MILLIMETRES
± 1/2°	± 1/16	.XXX .XX .X	± .005 ± .010 ± .020	± 0.1 ± 0.3 ± 0.5

Part No.	 <div>LIFTSAFE ENGINEERING & SERVICE GROUP INC. www.liftsafeinspections.com T. (519) 896-2430/1-800-977-2005, Email: info@liftsafeinspections.com F. (519) 896-2085</div>			Project: WIDE PLATFORM WHEEL WELL + CARGOACCESS STAND	
Materials.					
Work Order No.					
Next Assembly.					
Checked By: C.R.	Date: 5/19/2016	Description: WIDE PLATFORM STAND			
Designed By: G.R.	Date: 5/11/2011	SIZE: B	SCALE: N.T.S.	DWG NO: DF071556-03XP	
Drawn By: A.P.	Date: 5/19/2016	SHEET 1 OF 1		REV 3.0	