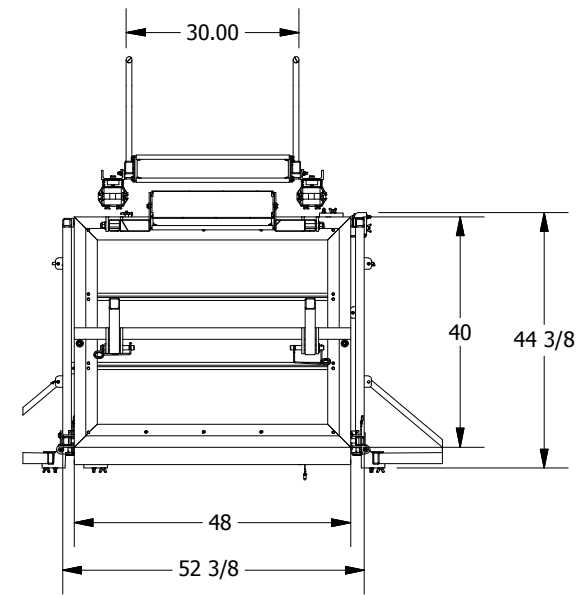
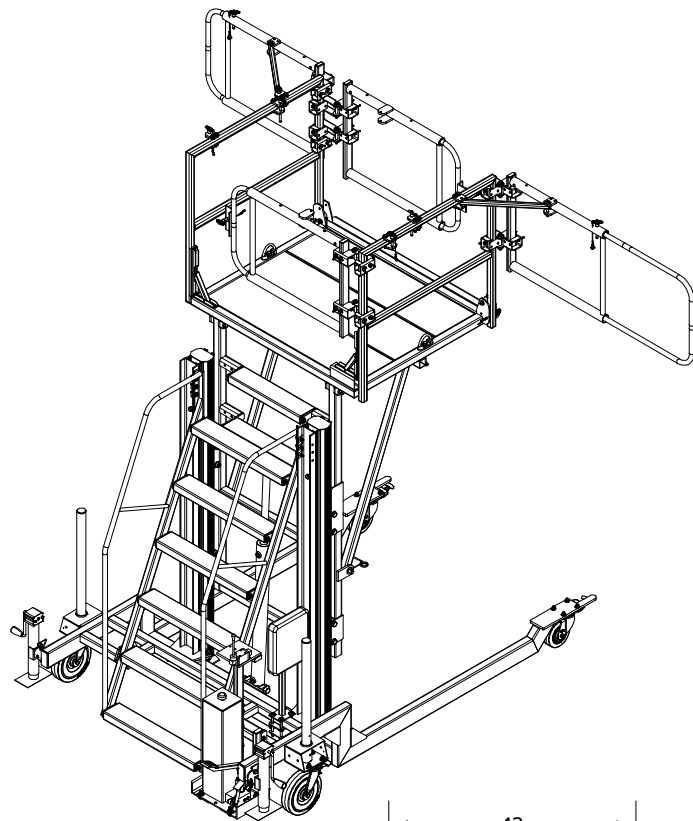
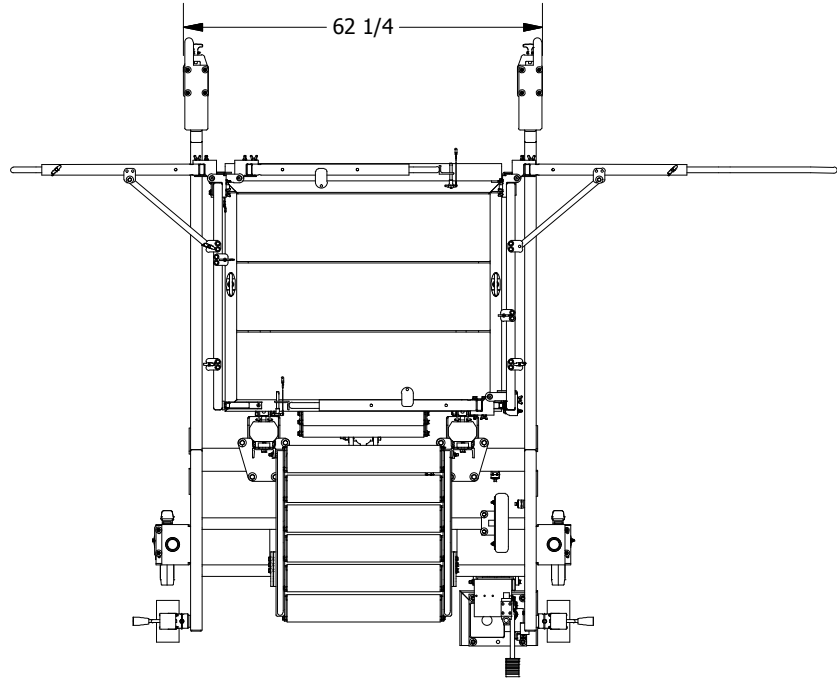
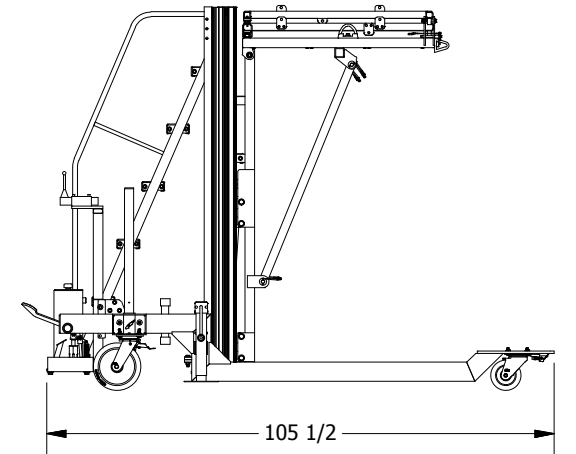
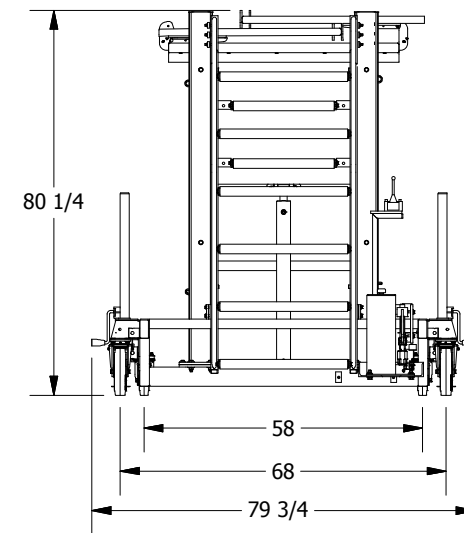
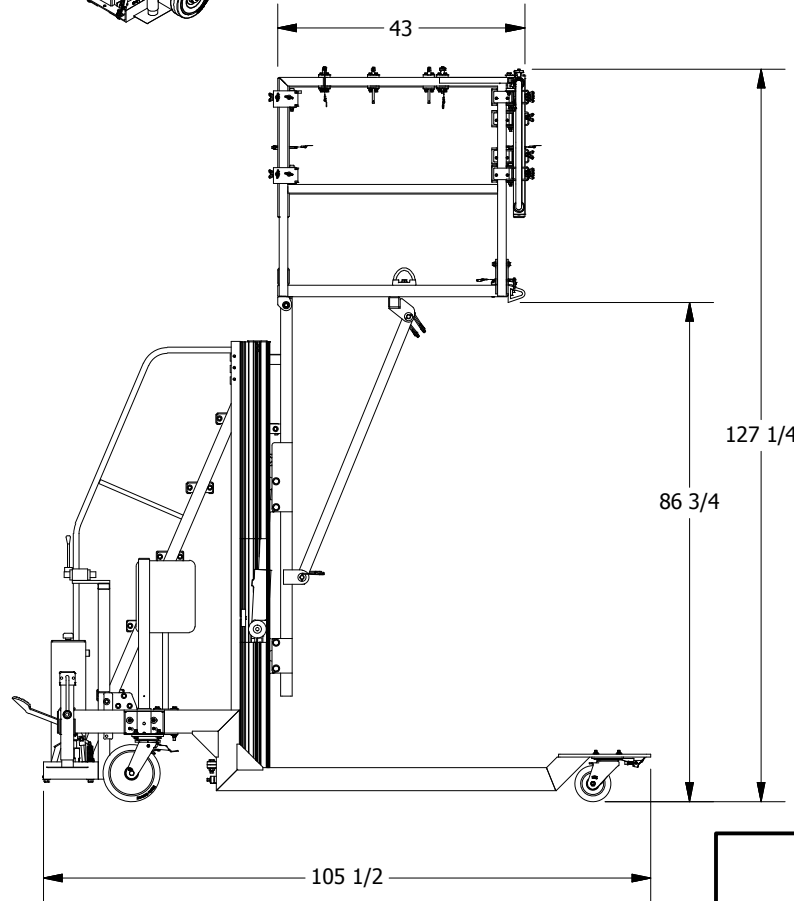
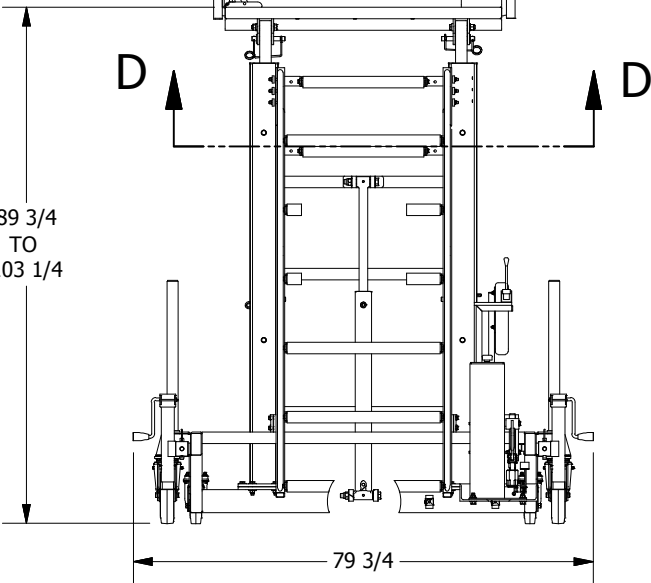
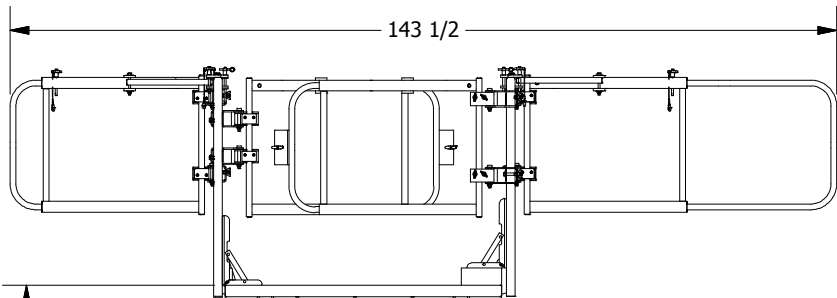


SIGNATURE	DATE
-----------	------

REVISION HISTORY			
REV	DESCRIPTION	DATE	APPROVED
3.0	ISSUED FOR PRODUCTION	2/12/2016	C.R.



SECTION D-D
SCALE 0.03 : 1

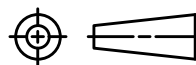


WEIGHT: 1,200 LBS. APPROX.

GENERAL NOTES:

- 1) ALL STRUCTURAL STEEL SECTIONS SHALL CONFORM TO CSA G40.21-50W
- 2) ALL STEEL PLATE AND BAR SHALL CONFORM TO CSA G40.21-44W
- 3) ALL WELDING SHALL CONFORM TO CSA W59 AND BE UNDERTAKEN BY A WELDER FULLY APPROVED BY THE CANADIAN WELDING BUREAU TO CSA W47 DIVISION
- 4) ALL WELDS TO BE SMOOTH AND FREE OF BURRS
- 5) ALL WELDS TO BE 1/4" CONTINUOUS FILLET OR 1/4" EFFECTIVE THROAT FLARE BEVEL U.N.O.

THIS DRAWING AND THE INTELLECTUAL INFORMATION ON THIS DRAWING ARE THE PROPERTY OF LIFTSAFE ENGINEERING & SERVICE GROUP INC. AND MAY NOT BE REPRODUCED OR USED IN ANY MANNER WITHOUT OUR WRITTEN CONSENT



THIRD ANGLE PROJECTION

Tolerance Unless Noted Otherwise

ANGLE	FRACTION	DECIMAL PLACES	INCHES	MILLIMETRES
± 1/2°	± 1/16	.XXX	± .005	± 0.1
		.XX	± .010	± 0.3
		.X	± .020	± 0.5

Part No.

V01989

Materials.

Work Order No.

Next Assembly.

Checked By:

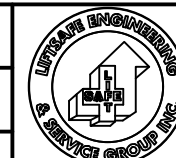
CR

Designed By:

GR

Drawn By:

ED



LIFTSAFE ENGINEERING & SERVICE GROUP INC.

www.liftsafeinspections.com T. (519) 896-2430/1-800-977-2005,
Email: info@liftsafeinspections.com F. (519) 896-2085

Customer & Location:

Project:

WHEEL WELL AND CARGO ACCESS STAND

Description: PLATFORM STAND WITH WINGS

SIZE SCALE: N.T.S

B SHEET 1 OF 2

DWG NO:

DF071556-03

REV

3.0