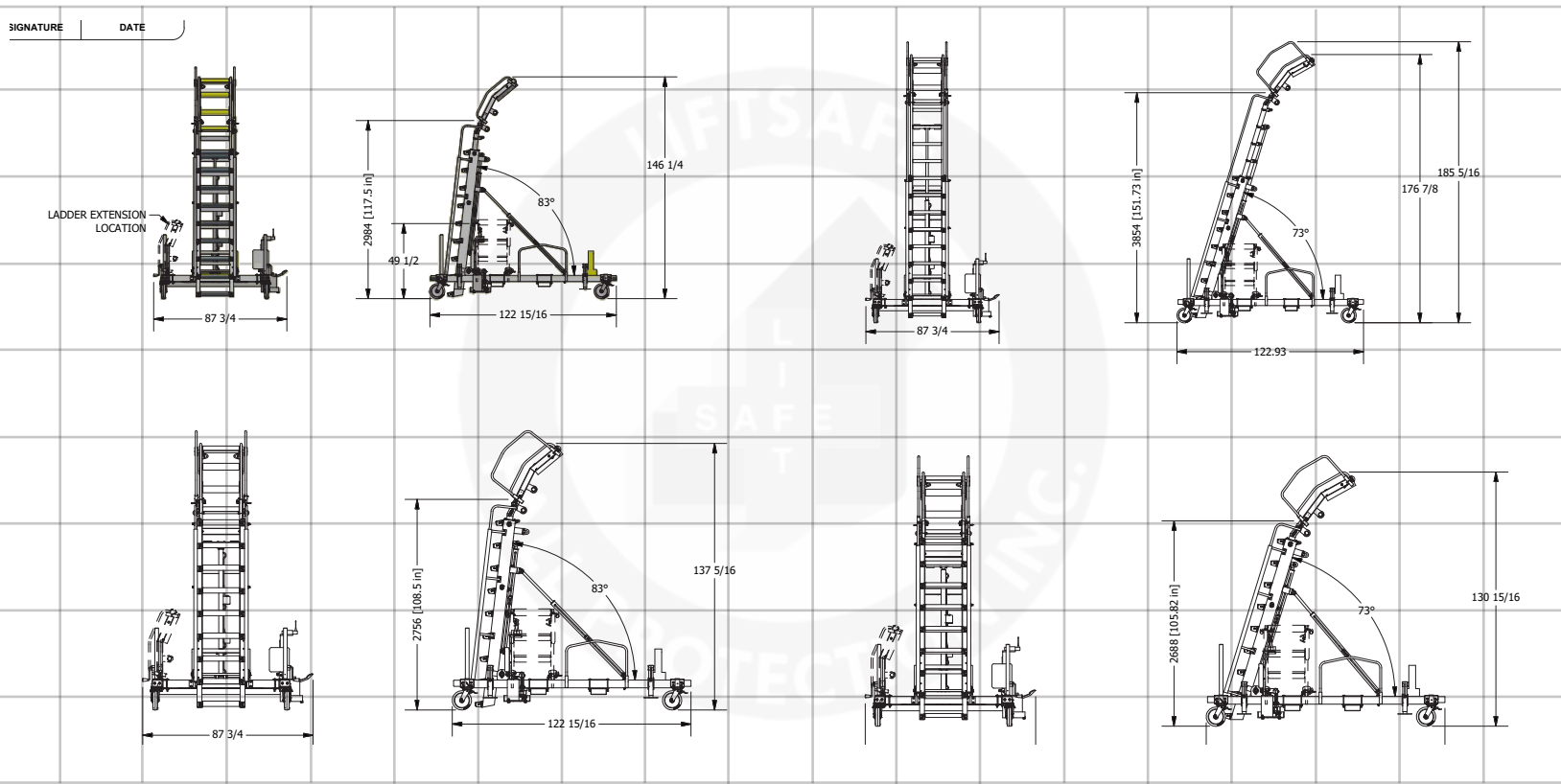


Aircraft Maintenance and Engine Access Stand 07-08



Technical Specifications

| | | | | | | | |
|---|--|--|--|--|---|--|--|
| # | PART NUMBER. DF071554-07-08 | | DESIGNED FOR. Engine Access | | MOVEMENT. 1 Person | | Padding Material. Equipped |
| | ANGLES. 73 - 83 Degrees | | AIRCRAFT TYPE. B767, B787, B747, A320, A310 & B717 | | TOWING SPEED. 10 KPH/ 6 MPH | | SHIPPING INFO (DIMS). 88" x 50" x 123" x 1,050 lbs |
| | HEIGHT. Low: 129 7/16" High: 183 3/8" | | NUMBER OF USERS. 1 User | | MATERIAL TYPE: LADDER. Aluminum | | CASTER DETAILS. 10" With Brakes & Swivel |
| | FOOT PRINT. 88" x 123" | | WEIGHT CAPACITY. 150 kg/330 lbs | | MATERIAL TYPE: FRAME. Aluminum | | CERTIFICATIONS. ANSI-ASC A14.7, BS EN 131.7 & CE |
| | CONTROLS. Hydraulic Foot Pump | | Fully Extended. Ladder: 57 Strokes Tilt: 23 Strokes | | FINISH. Powder Coated Finish | | FALL RESTRAINT ANCHOR POINTS. Equipped |

Stand Description

This Aircraft Maintenance Stand is for the under and over cowling access requirements of the B767 and B787. As with all our stands, we use anti-fatigue ladder rungs rather than narrow ladder rungs. This ensures comfort when using the stands to change LRU'S, adjust components or connect/disconnect engines and nacelles. Functionality improves as a result of a lighter design, smaller footprint and greater geometry. This product is currently in use at multiple operators, MRO'S and aircraft manufacturers.

The stand facilitates safe access to nose cowls, fan cowls and pylon disconnect zones on PW, GE and RR engines, providing a safe working solution to many of the traditionally difficult under-cowling maintenance locations. The unit is also designed to safely access the same points outside of cowling, specifically forward and aft pylon service points, as well as hard to reach refuel panels and under-wing areas. The hydraulic pitch and height adjustment allow for the diverse angles and height requirements frequently used when servicing aircraft. The stand contains extensive aluminum construction for easy movement and corrosion-resistant powder coat finish for longevity.

For increased safety and ease of mobility, the stand has optional accessories which can be added. They include 4 corner-leveling jacks, fold away tow bars and lift truck fork pockets. The stand is designed and tested in accordance with ANSI-ASC A14.7 and BS EN 131.7 and includes CE Certification.

Accessories

| ACCESSORY | PART NUMBER | DESCRIPTION |
|-------------------|----------------------------|---|
| Air Powered Pump | DF-Stand-Air-Pump | Optional air pump instead of the manual hydraulic pump system. |
| Fork Pockets | DF071554-07-Fork-Pockets | These fork pocket additions will enable you to quickly and easily move your stand. |
| Jacks | DF071554-07-Leveling-Jacks | This set of 4 leveling jacks and attachment plates will allow you to secure your stand. |
| Platform Adaptor | DF071554-Platform-Adaptor | Plugin platform in place of the curved section on all current engine stands. |
| Tow Bar | DF071554-07-Tow-Bar | Quickly and efficiently move your stand with the addition of a tow bar attachment. |
| Utilities Package | DF-Stand-Utilities-Package | Adds shop air and electrical power user service package to a unit. |

