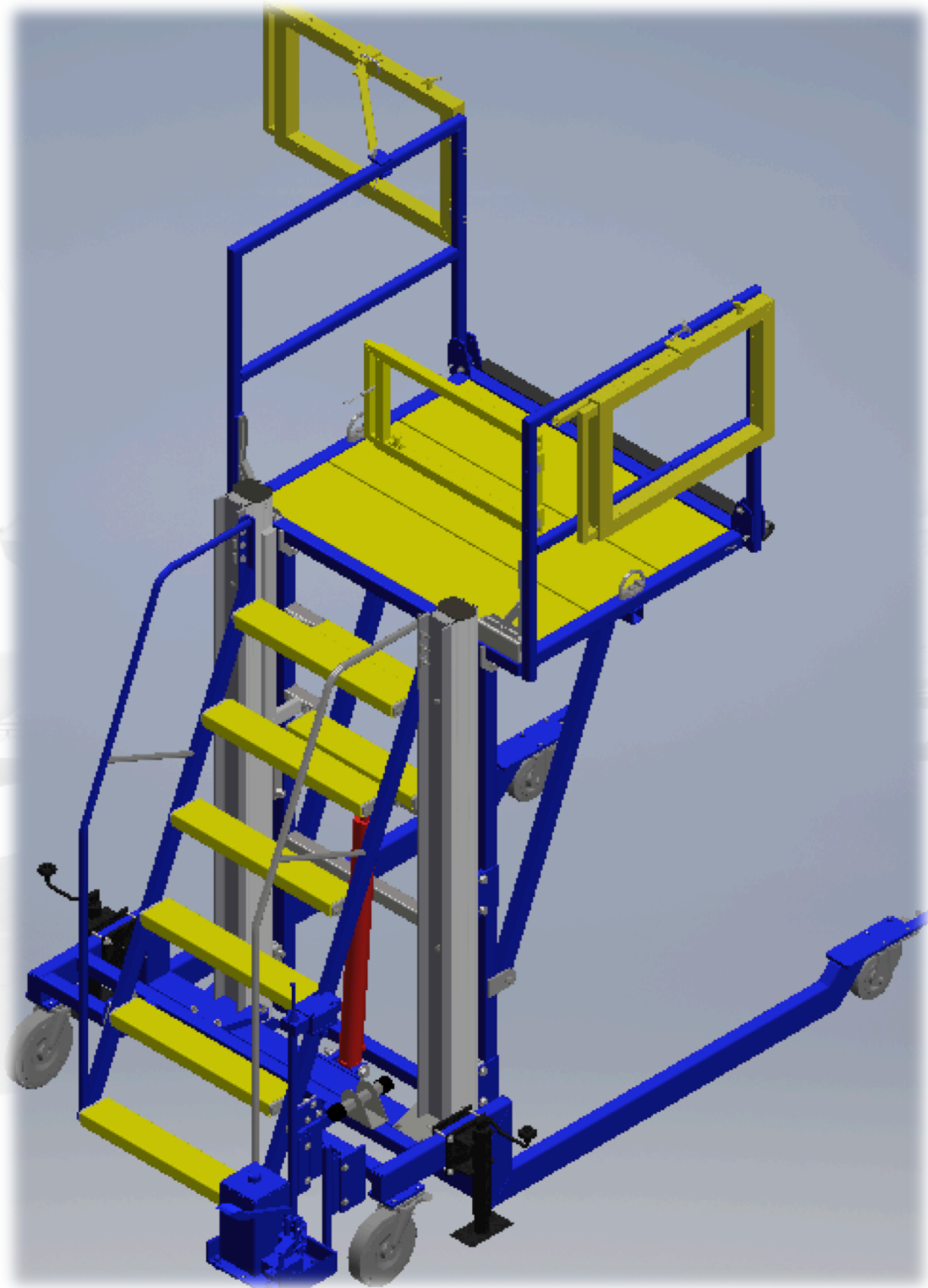


# PLATFORM WHEEL WELL ACCESS STAND

MODEL# DF071556 - 02

MAINTENANCE AND OPERATION MANUAL



# PLATFORM WHEEL WELL ACCESS STAND

MODEL# DF071556 - 02

## MAINTENANCE AND OPERATION MANUAL



**WARNING**  
**Safety First**

### ***Standards***

Tested in general accordance with the applicable requirements of

- DIN EN 131 – 2 : 2012
- BS EN 131 – 7 : 2013
- ANSI – ASC A14.7 – 20 – 2011

The best insurance against an accident is a careful, qualified operator. Most accidents are caused by the failure of individuals to follow simple and fundamental safety rules and precautions. Use common sense when operating a mobile ladder stand.

You, as a careful operator, are the best insurance against an accident. Therefore, proper usage of this mobile ladder stand is mandatory. The following pages of this manual should be read and understood completely before operating the mobile ladder stand.

Common sense dictates the use of protective clothing when working on or near machinery. Use appropriate safety devices to protect your eyes, ears, hands, feet and body.

Any modifications from the original design are strictly forbidden without written permission from Liftsafe Engineering and Service Group Inc.

### ***Electrocution Hazard***

This mobile ladder stand is not electrically insulated. Maintain a Minimum Safe Approach Distance (MSAD) from energized power lines and parts as listed below. The operator must allow for the ladder to sway, rock or sag. This mobile ladder stand does not provide protection from contact with or proximity to an electrically charged conductor.

**DO NOT Use Mobile Ladder Stand as a ground for Welding.**



# PLATFORM WHEEL WELL ACCESS STAND

MODEL# DF071556 - 02

## MAINTENANCE AND OPERATION MANUAL

**DO NOT Operate Mobile Ladder Stand during lightning or storms.**



**Avoid Power Lines**

### Minimum Safe Approach Distance

Voltage Range (Phase to Phase)	Minimum Safe Approach Distance (Feet)	CE Guidance Note "Avoidance of danger from overhead lines"
0 to 300V	<b>Avoid Contact</b>	Adhere strictly to the governmental rulings and regulations applicable in your country.
Over 300V to 50KV	<b>10</b>	
Over 50KV to 200KV	<b>15</b>	
Over 200KV to 350KV	<b>20</b>	
Over 350KV to 500KV	<b>25</b>	
Over 500KV to 750KV	<b>35</b>	
Over 750KV to 1000KV	<b>45</b>	

### **Safety Precautions**

Know and understand the Safety Precautions before use!



# PLATFORM WHEEL WELL ACCESS STAND

MODEL# DF071556 - 02

## MAINTENANCE AND OPERATION MANUAL



Failure to heed the following safety precautions could result in tip over, falling, crushing or other hazards leading to death or serious injury.

### *Safety Precautions Continued*

- **KNOW** all national, state or territorial/provincial and local rules which apply to your mobile ladder stand and jobsite.
- **WEAR** all the protective clothing and personal safety devices issued to you or called for by job conditions.
- **DO NOT** wear loose clothing, dangling neckties, scarves, rings, wristwatches or other jewelry while operating this ladder.
- **AVOID** entanglement with ropes, cords or hoses.
- **AVOID** falling. Stay within the boundaries of the handrails. Overreaching, while on the ladder, could cause instability and result in a fall. Always keep the unit in close proximity to work. Descend and relocate the unit to prevent overreach.
- **DO NOT** raise the mobile ladder stand in windy or gusty conditions.
- **DO NOT** increase the lateral surface area of the mobile ladder stand. Increasing the area exposed to the wind will decrease mobile ladder stand stability.
- **DO NOT** move or elevate the mobile ladder stand if it is not on a firm level surface. Do not move near depressions or holes of any type, loading docks, debris, drop-offs and surfaces that may affect the stability of the mobile ladder stand.
- **DO NOT** operate on surfaces not capable of holding the weight of the mobile ladder stand including the rated load, e.g. covers, drains, and trenches.
- **DO NOT** operate a mobile ladder stand that has extensions, ladders, scaffolding or other devices mounted on it to increase its size or work height. It is prohibited.



# PLATFORM WHEEL WELL ACCESS STAND

MODEL# DF071556 - 02

## MAINTENANCE AND OPERATION MANUAL

- **DO NOT** on mobile
- **DO NOT** use stand as a prohibited.
- **DO NOT** sit, any part of stand intended prohibited.



exert side forces ladder stand. the mobile ladder crane. It is

stand or climb on the mobile ladder except the ladder rungs. It is

- **DO NOT** raise or lower the mobile ladder stand with a person or equipment on the ladder. It is prohibited.
- **DO NOT** move the mobile ladder stand with a person or equipment on the ladder. It is prohibited.
- **ENSURE** the ladder is only raised or lowered from an operator standing on the ground.
- **BE AWARE** of overhead obstructions or other possible hazards around the mobile ladder stand when moving or lifting.
- **DO NOT** use the mobile ladder stand while the mobile ladder stand is on a truck, fork lift or other device or vehicle.
- **BE AWARE** of crushing hazards. Keep all body parts away from moving parts.
- **DO NOT** lower the ladder unless the area below is clear of personnel and obstructions.
- **BE AWARE** of blind spots when operating the mobile ladder stand.
- **STUNTS** and horseplay are prohibited.

- **ENSURE** all wheel brakes are locked, outrigger jacks are down (if equipped) and mobile ladder stand is level prior to climbing ladder.



# PLATFORM WHEEL WELL ACCESS STAND

MODEL# DF071556 - 02

## MAINTENANCE AND OPERATION MANUAL

- **DO NOT** exceed the rated capacity of the mobile ladder stand.
- **DO NOT** position the mobile ladder stand against another object to steady the platform.



### WARNING

**Ascending and descending the ladder shall only be done using three points of contact.**

- Use only equipped ladder for ascending and descending.
- Do use three points of contact ascending and descending the ladder. Face the ladder when entering and exiting.
- Three points of contact means that two hands and one foot or one hand and two feet are in contact with the ladder or the ground at all times during ascending or descending.



### WARNING

**An operator should not use any mobile ladder stand that:**

- Does not appear to be working properly.
- Has been damaged or appears to have worn or missing parts.
- Has alterations or modifications not approved by the manufacturer.
- Has safety devices which have been altered or disabled.
- Has been tagged or blocked out for non-use or repair.

**Failure to avoid these hazards could result in death or serious injury.**

### ***Jobsite Inspection***

- Do not use in hazardous locations.
- Perform a thorough jobsite inspection prior to operating the mobile ladder stand, to identify potential hazards in your work area.
- Be aware of moving equipment in the area. Take appropriate actions to avoid collision.



# PLATFORM WHEEL WELL ACCESS STAND

MODEL# DF071556 - 02

## MAINTENANCE AND OPERATION MANUAL

### ***Maintenance and Inspection Schedule***

The actual operating environment of the mobile ladder stand governs the use of the maintenance schedule. The inspection points covered in **Table 1.2** Maintenance and Inspection Checklist indicates the areas of the mobile ladder stand to be maintained or inspected and at what intervals the maintenance and inspections are to be performed.

### ***Owner's Annual Inspection Record***

It is the responsibility of the owner to arrange quarterly and annual inspections of the mobile ladder stand. **Table 1.1** Owner's Annual Inspection Record is to be used for recording the date of the inspection, owner's name, and the person responsible for the inspection of the mobile ladder stand.

### ***Replacement Parts***

Use only original replacement parts. Parts such as wheels, handrails, etc. with weight and dimensions different from original parts will affect stability of the mobile ladder stand and must not be used without manufacturer's consent.



# PLATFORM WHEEL WELL ACCESS STAND

MODEL# DF071556 - 02

## MAINTENANCE AND OPERATION MANUAL

### *First Use Instructions*



#### **WARNING**

**Inspect all components of the mobile ladder stand prior to assembling and report any missing or damaged components to Liftsafe Engineering & Service Group Inc.**

1. The Wheel Well Access Stand is shipped fully assembled.
2. Check all hardware on the mobile ladder stand to ensure nothing has become loose during shipping.
3. Complete a start-up annual inspection and full function test prior to first use (refer to table 1.2).



#### **WARNING**

**Any unit that is damaged or not operating properly must be immediately tagged and removed from service until proper repairs are completed.**

### ***Maintenance and Service Safety Tips***

- Maintenance and repair should only be performed by personnel who are trained and qualified to service this mobile ladder stand.
- All maintenance and service procedures should be performed in a well-lit and well ventilated area.
- Anyone operating or servicing this mobile ladder stand must read and completely understand all operating instructions and safety hazards in this manual.
- All tools, supports and lifting equipment to be used must be of proper rated load and in good working order before any service work begins. Work area should be kept clean and free of debris to avoid contaminating components while servicing.
- All service personnel must be familiar with employer and governmental regulations that apply to servicing this type of equipment.
- Keep sparks and flames away from all flammable or combustible materials.
- Properly dispose of all waste material such as lubricants, rags, and old parts according to the relative law provisions obtaining in the country.

### ***Maintenance and Inspection***





# PLATFORM WHEEL WELL ACCESS STAND

MODEL# DF071556 - 02

## MAINTENANCE AND OPERATION MANUAL

Death or injury can result if the mobile ladder stand is not kept in good working order. Inspection and maintenance should be performed by competent personnel who are trained and qualified on maintenance of this mobile ladder stand.



### WARNING

**Failure to perform each procedure as presented and scheduled may cause death, serious injury or substantial damage.**

**NOTE:** Preventive maintenance is the easiest and least expensive type of maintenance.

- Unless otherwise specified, perform each maintenance procedure with the mobile ladder stand in the following configuration:
- Mobile ladder stand parked on a flat and level surface with wheel brakes engaged.
- Repair any damaged or malfunction components before operating mobile ladder stand.
- Keep records on all inspections.

### ***Maintenance Instructions***

This manual consists of four schedules to be done for maintenance on a mobile ladder stand. Inspection schedule frequency is shown below:

#### ***Inspection Schedule***

Daily	A
Frequently	A + B
Annually	A + B + C
Bi-Annually	A + B + C + D

- Make copies of the maintenance and inspection checklist to be used for each inspection.
- Check the schedule on the checklist for the type of inspection to be performed.
- Place a check in the appropriate box after each inspection procedure is completed.
- Use the maintenance and inspection checklist to perform these inspections.
- If any inspection receives a fail, tag and remove the aerial platform from service.



# PLATFORM WHEEL WELL ACCESS STAND

MODEL# DF071556 - 02

## MAINTENANCE AND OPERATION MANUAL

LEGEND		
P=PASS	F=FAIL	R=REPAIRED

**Table 1.1 Owners Annual Inspection Record**

MODEL NUMBER:					SERIAL NUMBER:				
Recording Date	1 .	2 .	3 .	4 .	5 .	6 .	7 .	8 .	9 .
Recording Year									
Owners Name									
Inspected By									

**Table 1.2 Maintenance and Inspection Checklist**

If any mobile ladder stand component(s) has been repaired, an inspection must be performed again before removing the tag. Place a check in the repair column.

Serial Number:	OPERATORS NAME: (Please Print)  OPERATOR'S SIGNATURE:
Model Number:	
Date:	
Time:	

As each item is inspected, write the appropriate grade in the box.

P=PASS    F=FAIL    R=REPAIRED



# PLATFORM WHEEL WELL ACCESS STAND

MODEL# DF071556 - 02

## MAINTENANCE AND OPERATION MANUAL

- A Perform Visual and Daily Maintenance Inspections & Functions Test**
- B Perform scheduled Maintenance Inspection every three months based on regular**
- C Perform scheduled Maintenance Inspection every year**

Schedule		P	F	R
<b>Inspection Point</b>				
Labels	A+B+C			
Wheel Brakes	A+B+C			
Caster Swivel Locks	A+B+C			
Foot Pump	A+B+C			
Cylinder	A+B+C			
Oil Level	A+B+C			
Leveling Jacks	A+B+C			
Ladder Structure	A+B+C			
Base Frame Structure	A+B+C			
Hand Rails	A+B+C			
Bumpers	A+B+C			
Directional Control Valve	A+B+C			
Hardware	A+B+C			
Platform	A+B+C			
Folding Hand Rails	A+B+C			
Function Test	A+B+C			

Note: Make a copy of this page



# PLATFORM WHEEL WELL ACCESS STAND

MODEL# DF071556 - 02

## MAINTENANCE AND OPERATION MANUAL

### *Replacement Parts List*

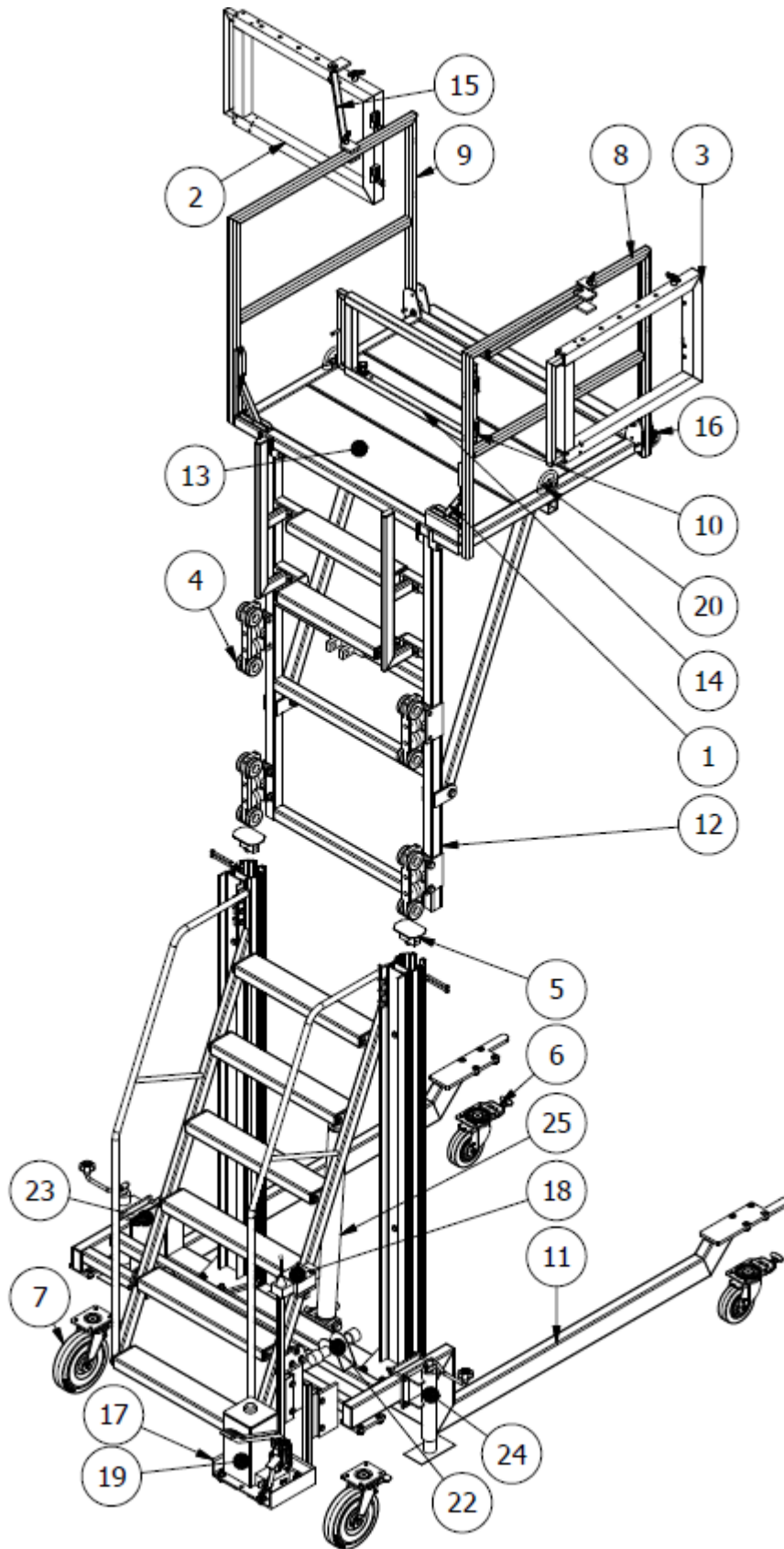
ITEM	PART NUMBER	DESCRIPTION
1	V00439	RAILING HINGE
2	V00671	LEFT SIDE EXTENDING DOOR
3	V00702	RIGHT SIDE EXTENDING DOOR
4	V00974	TROLLY
5	V00984	END STOP
6	V00985	BLICKLE 6" CASTER
7	V00991	BLICKLE 10" CASTER
8	V01333	ALUMINUM HAND RAIL - RH
9	V01336	ALUMINUM HAND RAIL - LH
10	V01412	OFFSET HINGE
11	V01467	BASE AND CES RAIL ASSEMBLY
12	V01471	TOP PLATFORM WITH TOP STAIRS ASSEMBLY
13	V01473	GRIP SPAN
14	V01669	REAR SAFETY DOOR
15	V01681	DOOR BRACE BAR
16	V01662	3/8 PULL PIN
17	V01654	HYDRAULIC STAND WELDMENT
18	V01657	DIRECTIONAL CONTROL VALVE
19	V01658	FOOT OPERATED PUMP
20	V01660	FALL ARREST ANCHOR POINT
21	V01663	HYD Oil AW32
22	V01661	DOCUMENT HOLDER
23	V01635	JACK WELDMENT MOUNTING PLATE
24	V01636	JACK WELDMENT
25	V01659	HYD Cylinder: 2.5 Bore x 30 stroke



# PLATFORM WHEEL WELL ACCESS STAND

MODEL# DF071556 - 02

## MAINTENANCE AND OPERATION MANUAL



# PLATFORM WHEEL WELL ACCESS STAND

MODEL# DF071556 - 02

## MAINTENANCE AND OPERATION MANUAL

### **Regular Operation Procedure**

- Ensure free of tools, equipment, and personnel
- Ensure safety of Wheel Well Access Stand
- Ensure safety of operating area
- Locate Wheel Well Access Stand in operating area
- Disengage and stow tow bar (If Equipped)
- Engage wheel locks (Figure 1)



Figure 1



Figure 2

- Engage leveling legs (Figure 2)



Figure 3

- Ascend ladder partially and erect platform railings (Figure 3)
- Keep hands/feet clear of all moving parts during operation



# PLATFORM WHEEL WELL ACCESS STAND

MODEL# DF071556 - 02

## MAINTENANCE AND OPERATION MANUAL

### ***Railing Extension Installation***

To install either left or right hand railing extensions:

- Ensure the platform is in its lowest position
- Ensure railings are erected and pinned
- Ensure the area around the platform is clear of obstructions
- Remove railing extension from its storage position and hand the extension to another worker on the platform
- Orient the railing extension so that the extension position locking holes are along the top of the railing
- Align the hinges of the railing extension with the hinges on the platform railing. Slide on to offset hinge (Figure 4)
- If you wish to extend the railings you must either slide them into their extended position before pinning the locking bar, or access the railings from another platform. Ensure the railing extensions are secured with a quick release pin before use. (Figure 6))
- Install the pull pins provided with the brace bars to lock doors in the 90 degree position (Figure 5)

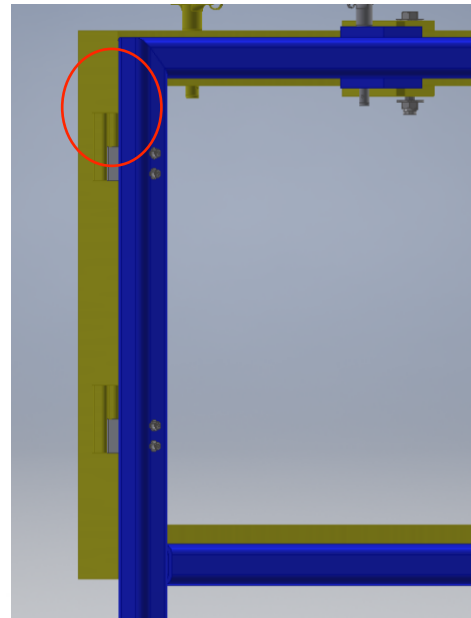


Figure 4

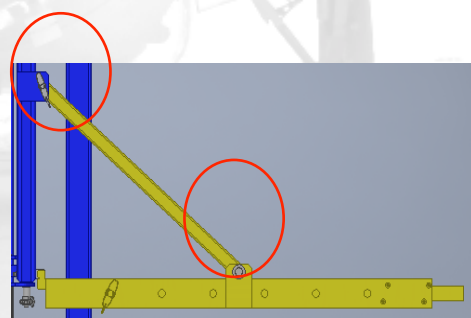


Figure 5



Figure 6

# PLATFORM WHEEL WELL ACCESS STAND

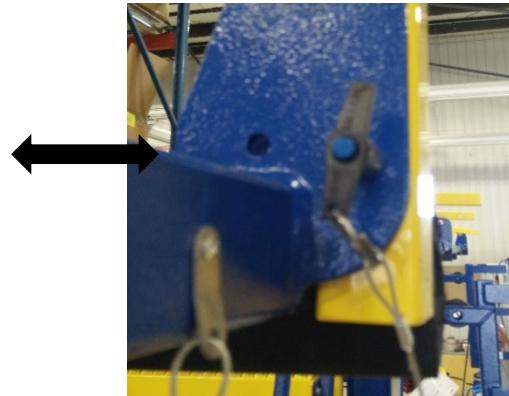
MODEL# DF071556 - 02

## MAINTENANCE AND OPERATION MANUAL

➤ From the ground, install platform railing safety pins (Figure 7)



Figure 8



➤ Hold black hydraulic lever either towards the platform to raise the platform or pull back towards the operator to lower the platform (Figure 5)

➤ Begin to pump using foot lever to either raise or lower (Figure 8)

Figur



# PLATFORM WHEEL WELL ACCESS STAND

MODEL# DF071556 - 02

## MAINTENANCE AND OPERATION MANUAL

### ***Rear Safety Door Operation***

- Ascend to platform and close rear door by removing pull pin (Figure 9)
- Swing door into closed position then lock gate by pulling up on the bolted pull pin while pulling gate out of inner door frame a locking click should be heard when completely opened (Figure 10)
- The removed pull pin is then installed into the rear door and left side hand rail
- Secure one's self using fall arrest Anchor (Figure 11)



Figure 11

# PLATFORM WHEEL WELL ACCESS STAND

MODEL# DF071556 - 02

## MAINTENANCE AND OPERATION MANUAL

After Use:

- Ensure platform is free of all equipment, tools, and personnel
- Remove and left and right extending doors (Figure 4)
- Lock rear safety gate in the storage position (Figure 9)
- Ensure area below and around platform is clear of obstructions
- Pump platform to storage height
- Remove safety pins (Figure 7), Unlock hinges (Figure 3)
- Raise leveling legs (Figure 2)
- Disengage wheel locks (Figure 1)
- Store Wheel Well Access Stand in a safe, dry location

### ***Tow Bar (If Equipped)***

Do not tow while platform is raised

Do not tow while tools, equipment, or personnel are on the Wheel Well Access Stand

Do not tow over 10km/h (6mph)

