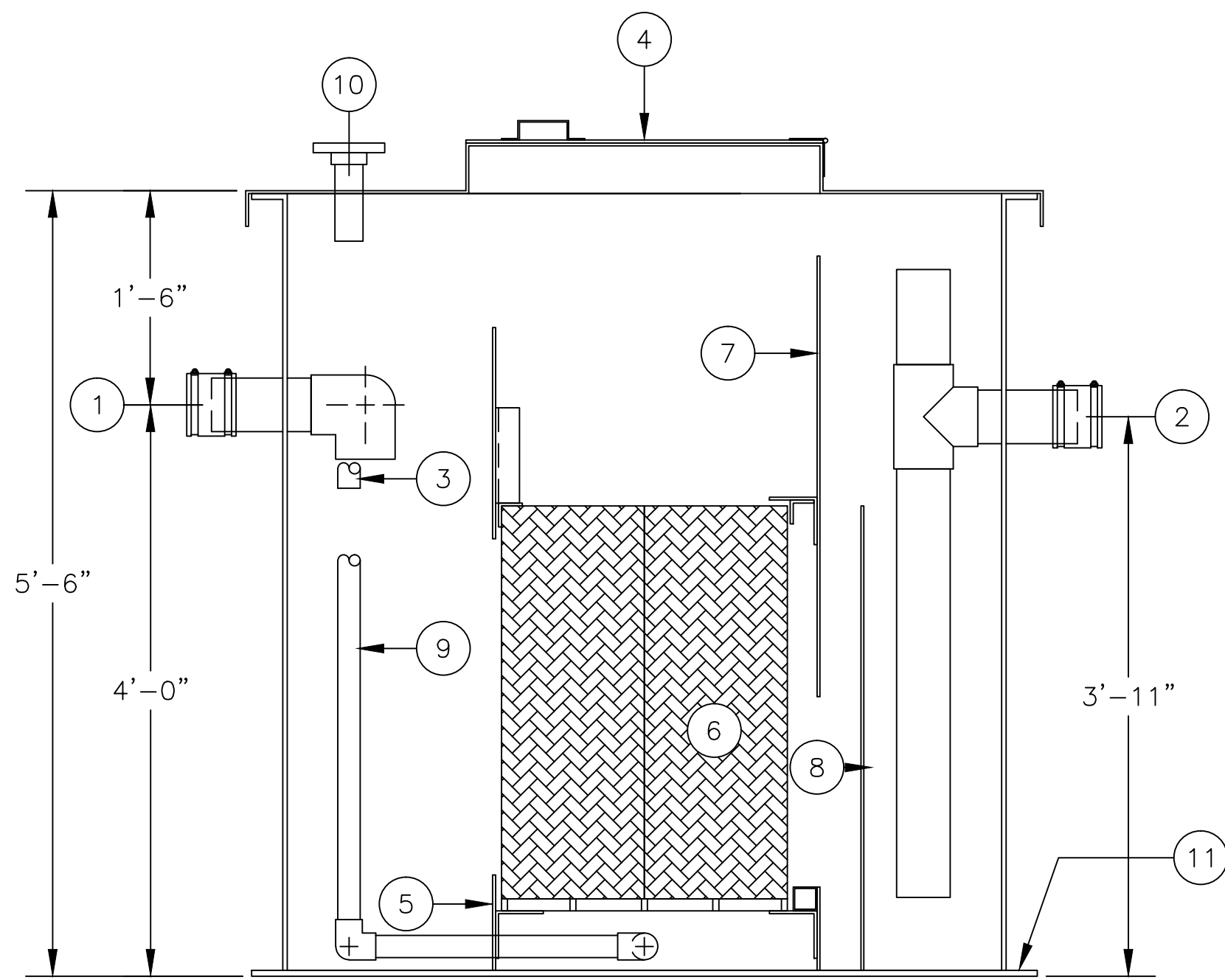
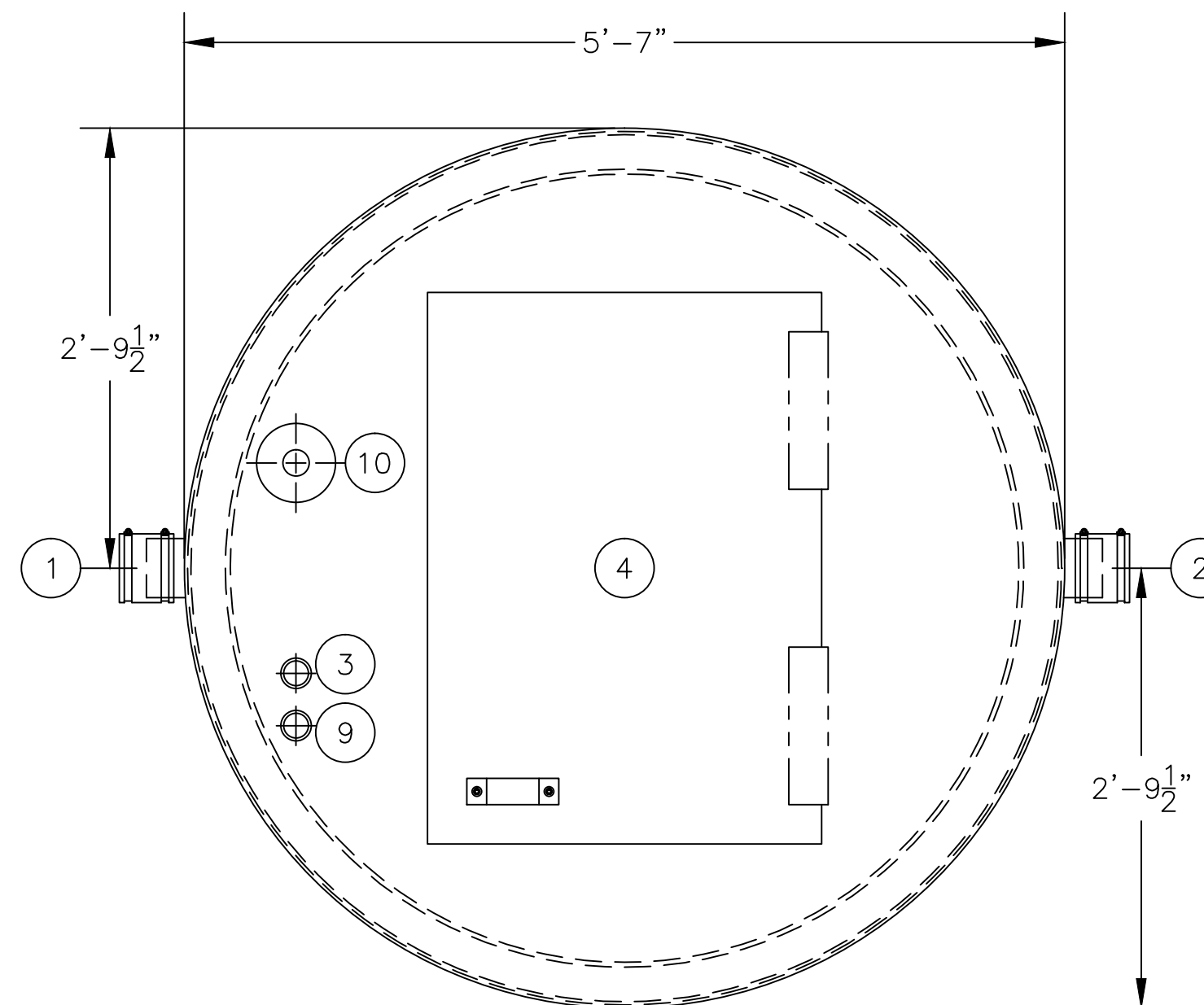


PLAN W/O LID



SECTION "A-A"



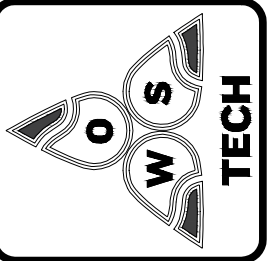
PLAN W/ LID

ASSEMBLY LIST

- ① 4"Ø INLET, PIPE STUB W/ FLEX CONNECTOR
- ② 4"Ø OUTLET, PIPE STUB W/ FLEX CONNECTOR
- ③ 1 1/2"Ø OIL DRAW OFF, FPT
- ④ 3'-6" x 2'-6" MANWAY
- ⑤ INLET BAFFLE
- ⑥ COALESCING MEDIA
- ⑦ OIL RETENTION BAFFLE
- ⑧ DIFFUSER BAFFLE
- ⑨ 1 1/2"Ø SLUDGE DRAW OFF, FPT
- ⑩ 2"Ø LEVEL SWITCH MTG. PROVISION, FLANGED
- ⑪ BOTTOM HOLD DOWN FLANGE

WEIGHTS & CAPACITIES

EMPTY WGT. APPROX.=475#
 OPERATING CAP.=540 GAL.
 OPERATING WGT.=4,954#
 NORMAL OIL CAP.=30 GAL.
 OIL SPILL CAP.=185 GAL.

MODEL: RF-F-50 G.P.M.	OWS JOB No. -	DRAWING No. 3S5031 FILE: RF-F-50 7/9/13	THIS DRAWING AND SPECIFICATION IS THE PROPERTY OF OWS TECHNOLOGIES, 1109 25TH STREET WEST PALM BEACH, FL. 33407. NO PARTS SHALL BE REPRODUCED WITHOUT WRITTEN PERMISSION.	DRAWN BY: TMB CHECKED BY:
	SCALE: 1=12 DATE: 7/9/12	 <p>OIL WATER SEPARATOR TECHNOLOGIES, LLC 1109 25TH STREET W.P.B., FL. 33407</p>		