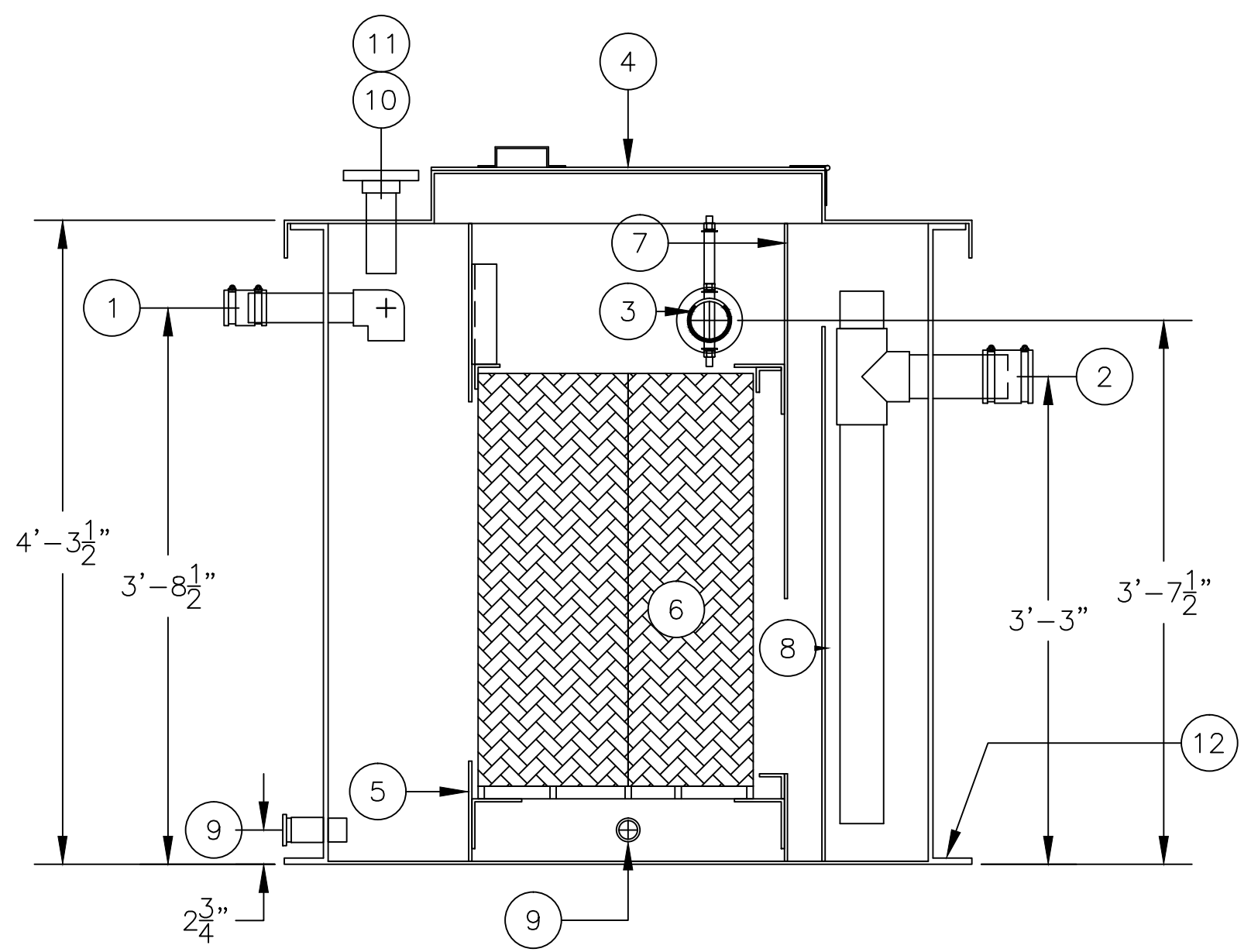
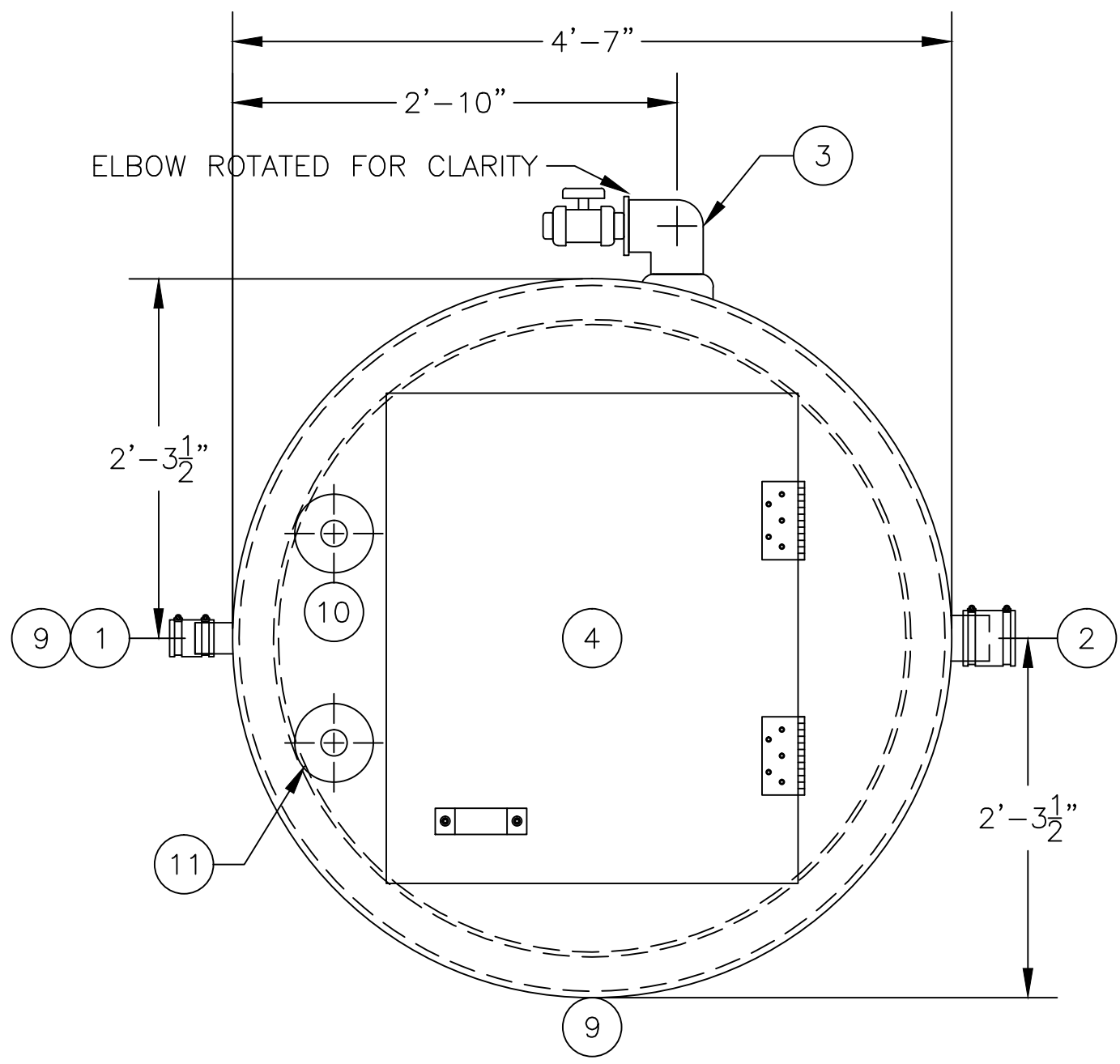


PLAN W/O LID



SECTION "A-A"



PLAN W/ LID

ASSEMBLY LIST

- ① 2"Ø INLET, PIPE STUB W/ FLEX CONNECTOR
- ② 3"Ø OUTLET, PIPE STUB W/ FLEX CONNECTOR
- ③ 3" ROTARY PIPE SKIMMER W/ OIL OUTLET
- ④ 3'-0" x 2'-6" MANWAY
- ⑤ INLET BAFFLE
- ⑥ COALESCING MEDIA
- ⑦ OIL RETENTION BAFFLE
- ⑧ WEIR WALL
- ⑨ 1 1/2"Ø DRAIN CPLG., FPT W/ PLUG(2 REQ'D.)
- ⑩ 2"Ø LEVEL SWITCH MTG. PROVISION, FLANGED
- ⑪ 2"Ø VENT, FLANGED
- ⑫ BOTTOM HOLD DOWN FLANGE

WEIGHTS & CAPACITIES

EMPTY WGT. APPROX.=450#
 OPERATING CAP.=329 GAL.
 OPERATING WGT.=3,200#
 NORMAL OIL CAP.=25 GAL.
 OIL SPILL CAP.=120 GAL.
 SOLIDS CAP.=5 CU./FT.

OIL WATER SEPARATOR TECHNOLOGIES, LLC <small>1109 25TH STREET W.P.B., FL. 33407</small>	SCALE: N.T.S.	DRAWN BY: TMB
	DATE: 7/9/15	CHECKED BY:
	OWS JOB No. -	DRAWING No. 3SS127
MODEL: RA-F-35 G.P.M.	FILE: RA-F-35 7/9/15	JOB: OWS TECHNOLOGIES

THIS DRAWING AND SPECIFICATION IS THE PROPERTY OF OWS TECHNOLOGIES 1109 25TH STREET WEST PALM BEACH, FL. 33407. IT IS TO BE USED ONLY FOR THE PROJECT AND SHALL NOT BE REPRODUCED WITHOUT WRITTEN PERMISSION.