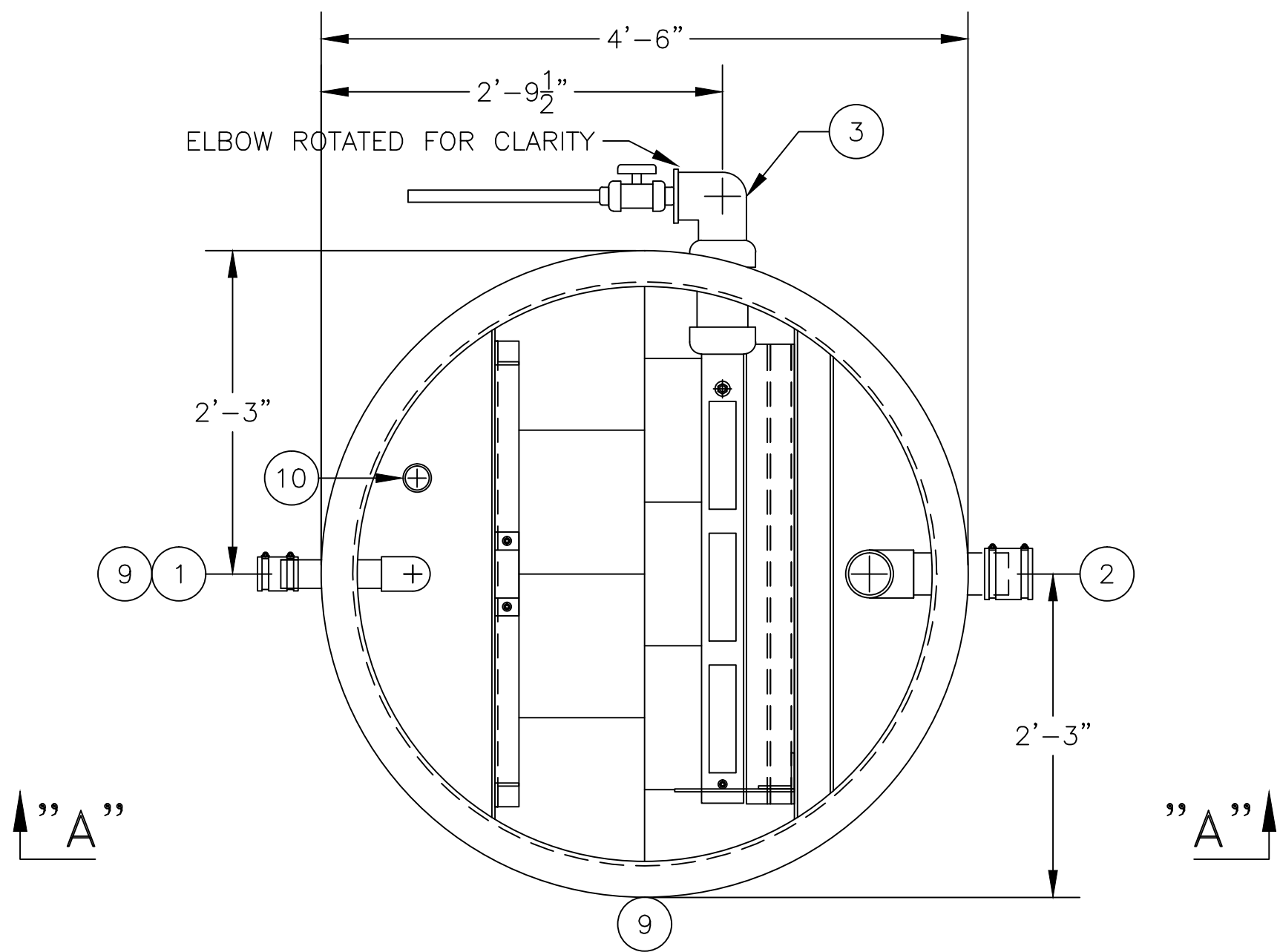
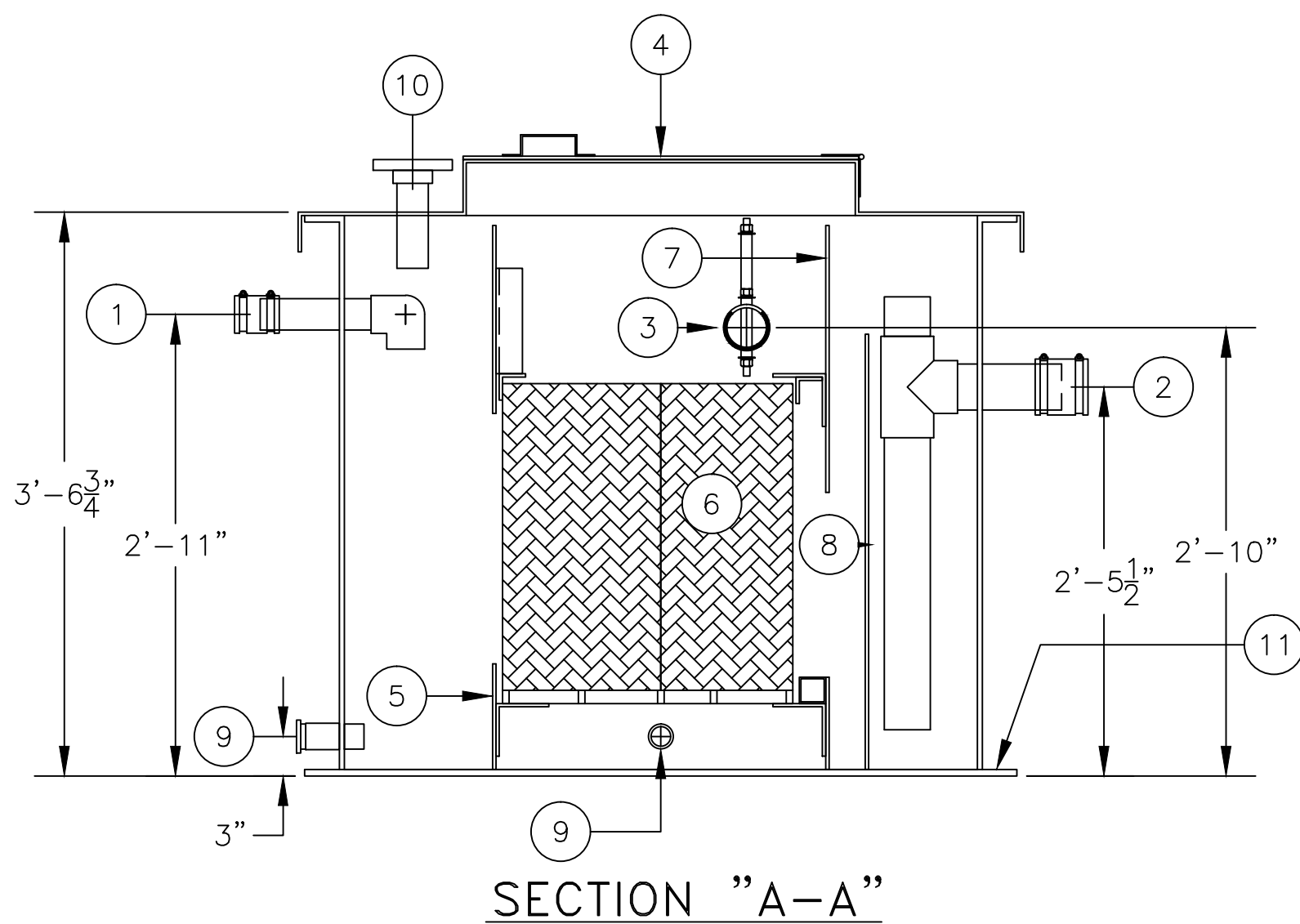


ASSEMBLY LIST

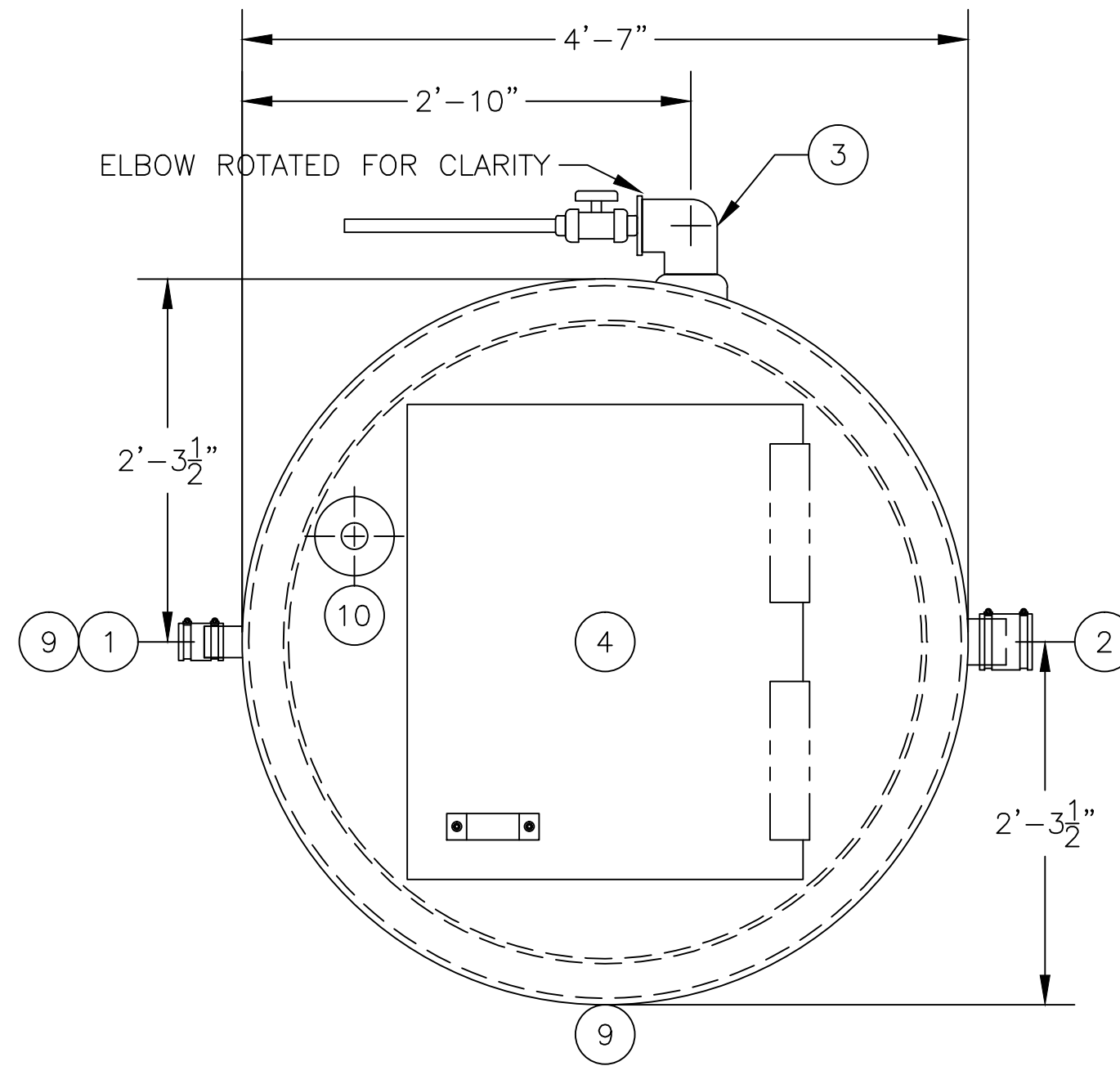
- ① 2"Ø INLET, PIPE STUB W/ FLEX CONNECTOR
- ② 3"Ø OUTLET, PIPE STUB W/ FLEX CONNECTOR
- ③ 3" ROTARY PIPE SKIMMER W/ OIL OUTLET
- ④ 3'-0" x 2'-6" MANWAY
- ⑤ INLET BAFFLE
- ⑥ COALESCING MEDIA
- ⑦ OIL RETENTION BAFFLE
- ⑧ WEIR WALL
- ⑨ 1 1/2"Ø DRAIN CPLG., FPT W/ PLUG(2 REQ'D.)
- ⑩ 2"Ø LEVEL SWITCH MTG. PROVISION, FLANGED
- ⑪ BOTTOM HOLD DOWN FLANGE



PLAN W/O LID



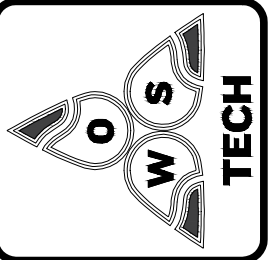
SECTION "A-A"



PLAN W/ LID

WEIGHTS & CAPACITIES

EMPTY WGT. APPROX.=375#
 OPERATING CAP.=260 GAL.
 OPERATING WGT.=2,540#
 NORMAL OIL CAP.=20 GAL.
 OIL SPILL CAP.=65 GAL.

MODEL: RA-F-20 G.P.M.	OWS JOB No. 1		OIL WATER SEPARATOR TECHNOLOGIES, LLC 1109 25TH STREET W.P.B., FL. 33407
	DRAWING No. 3S5027		
JOB: OWS TECHNOLOGIES	FILE: RA-F-20 7/9/13	THIS DRAWING AND SPECIFICATION IS THE PROPERTY OF OWS TECHNOLOGIES 1109 25TH STREET WEST PALM BEACH, FLORIDA 33407. NO PART SHALL BE REPRODUCED WITHOUT WRITTEN PERMISSION.	DRAWN BY: TMB CHECKED BY: