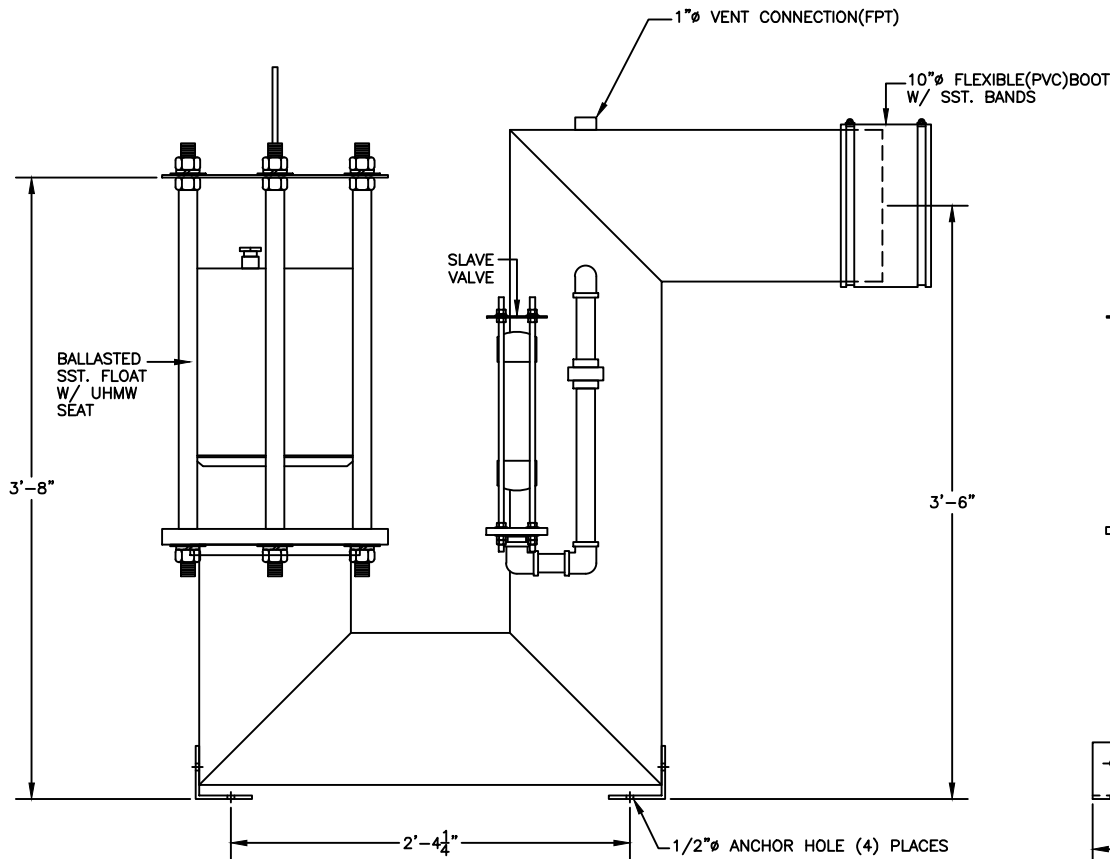
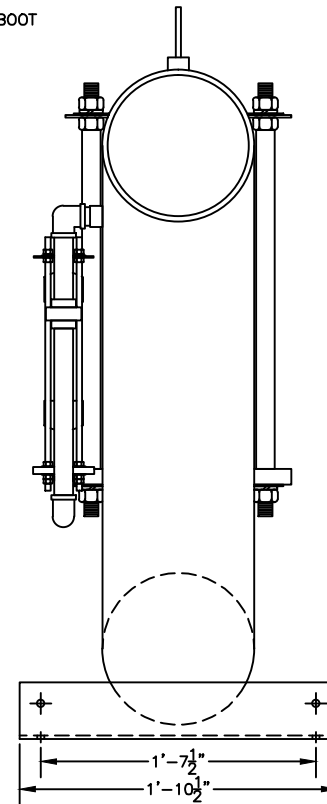


PLAN



SIDE VIEW



OUTLET END

IMPORTANT INFORMATION

COMPLETE STEP BY STEP INSTALLATION INSTRUCTIONS ARE PROVIDED WITH EACH VALVE TO INSURE PROPER OPERATION. SEE BULLETIN# 6.3 READING THE ENTIRE PROCEDURE BEFORE ATTEMPTING INSTALLATION WILL SAVE TIME & MONEY.

1. OUTLET PIPE OF VALVE TO BE GROUTED IN PLACE BY CONTRACTOR.
2. LIFTING HARNESS IS SUPPLIED & INSTALLED FOR CONTRACTORS USE. MUST BE REMOVED AFTER INSTALLATION.
3. FLEXIBLE OUTLET CONNECTION SUPPLIED WITH EACH VALVE
4. 1" VENT PIPE TO BE SUPPLIED & INSTALLED BY CONTRACTOR. VENT PIPE **MUST** BE EXTENDED ABOVE MAXIMUM OIL LEVEL OR OUTSIDE OF OIL SUMP. OIL MAY BYPASS STOP VALVE IF VENT IS **NOT** INSTALLED PROPERLY.
5. VALVE TO BE MOUNTED TO SUMP FLOOR. 1/2" HOLES ARE PROVIDED IN BASE ANGLES.
6. VALVE VAULT MUST BE PRIMED WITH WATER & FLOAT OPENED PRIOR COMPLETION OF INSTALLATION.
7. MANUAL LIFTING CABLE HANDLE IS TO BE MOUNTED NEAR MANHOLE BY CONTRACTOR. DO NOT USE MANUAL LIFTING CABLE IF OIL IS PRESENT.

<p>MODEL: OWS-OSV-10SSTSV</p>	<p>OWS JOB No. -</p>	<p>DATE: 6/19/13</p>
<p>JOB: OWS TECHNOLOGIES</p>	<p>DRAWING No. 3S5025</p>	<p>SCALE: 1=6</p>
<p>OIL WATER SEPARATOR TECHNOLOGIES, LLC</p> <p>1109 25TH STREET W.P.B., FL. 33407</p>		
<p>DRAWN BY: TMB CHECKED BY:</p>		
<p>THE DRAWING AND SPECIFICATIONS ARE THE PROPERTY OF OWS TECHNOLOGIES 1109 25TH STREET WEST PALM BEACH, FLORIDA 33407. REPRODUCED WITHOUT PERMISSION.</p>		