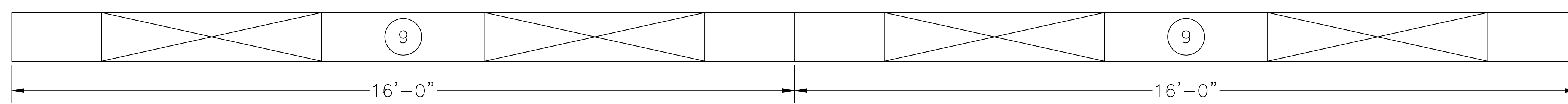
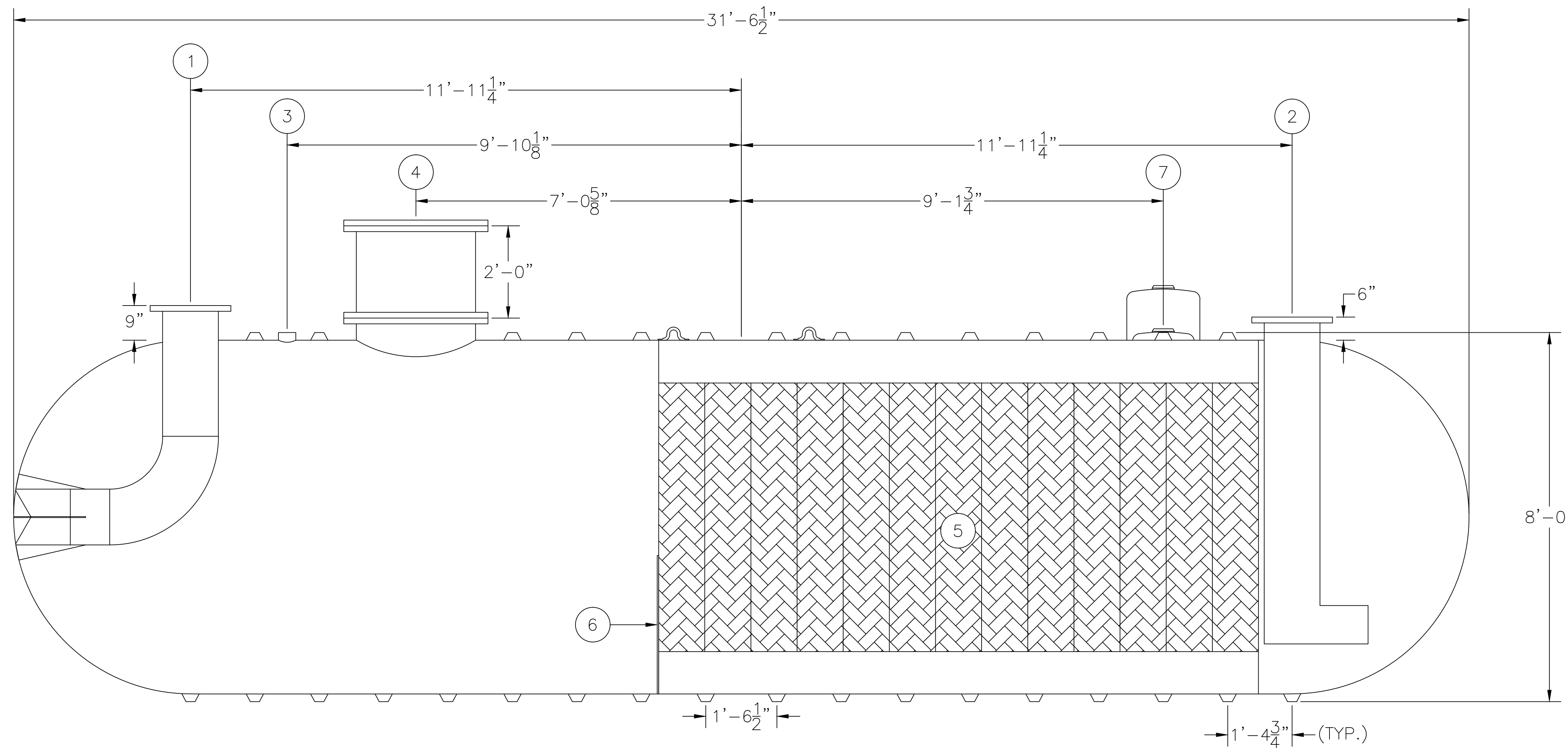
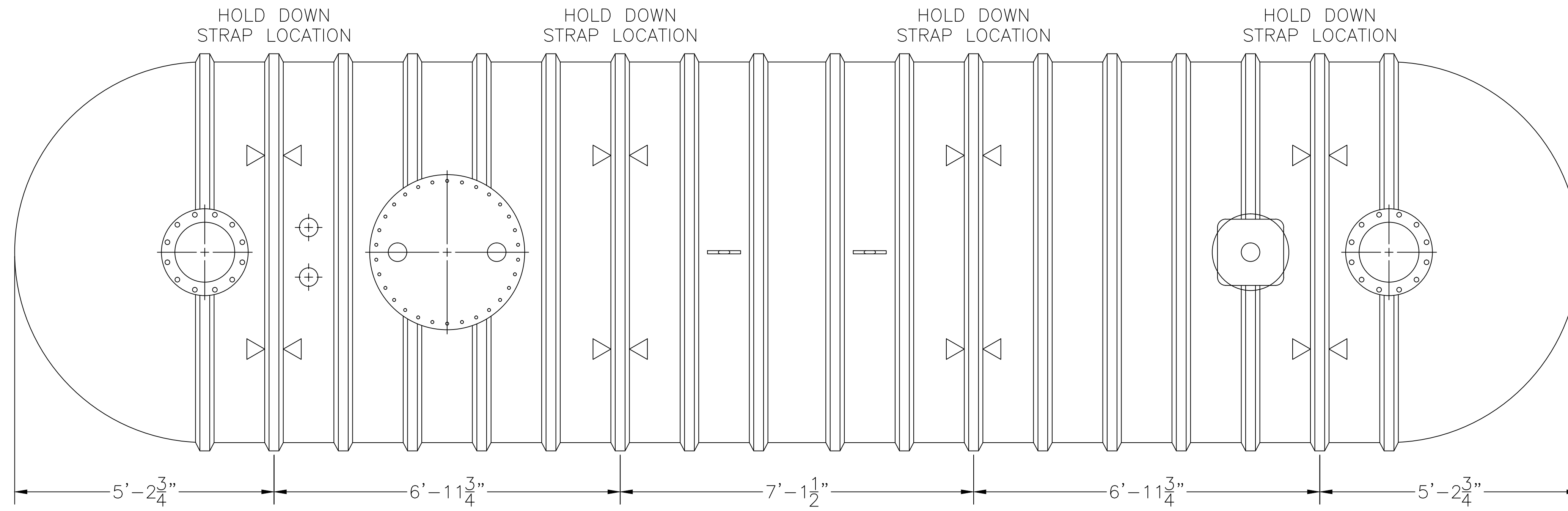


ASSEMBLY LIST

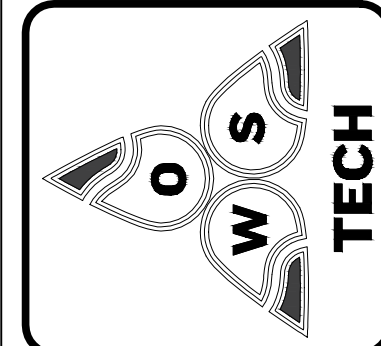
- ① 14"Ø INLET, FLANGED
- ② 14"Ø OUTLET, FLANGED
- ③ 4"Ø FPT DUPLEX SERVICE FITTING
- ④ 2'-6"Ø MANWAY W/ (2) FPT FITTINGS
- ⑤ COALESCING MEDIA
- ⑥ SLUDGE BAFFLE
- ⑦ 4"Ø FPT MONITOR FITTING OR OPTIONAL HYDROSTATIC RESERVOIR (DW ONLY)
- ⑧ LIFTING LUGS
- ⑨ OPTIONAL PREFABRICATED DEADMAN



WEIGHTS & CAPACITIES

8'Ø - 10,000 GAL. TANK SW OR DW
 NOMINAL WGT. SW 6,300#
 NOMINAL WGT. DW 7,800#
 MAX. SPILL CAPACITY 6,000 GAL.

MODEL: HB-F-8-10K-13 988 G.P.M. JOB: OWS TECHNOLOGIES	OWS JOB No. -	DRAWING No. 4S5025 FILE: 8-10K-988-SW/DW 2/3/14	DRAWN BY: TMB CHECKED BY:
	OWS TECHNOLOGIES 1109 25TH STREET W.P.B., FL. 33407		



THIS DRAWING AND SPECIFICATION IS THE PROPERTY OF OWS TECHNOLOGIES 1109 25TH STREET WEST PALM BEACH, FL. 33407 AND SHALL NOT BE REPRODUCED WITHOUT WRITTEN PERMISSION.

SCALE: N.T.S.
 DATE: 2/3/14