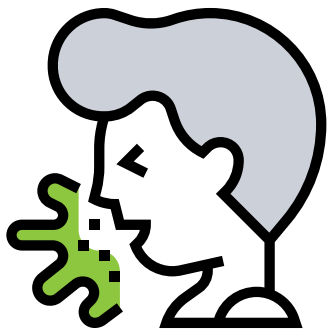


# TLCHD COVID-19 case process

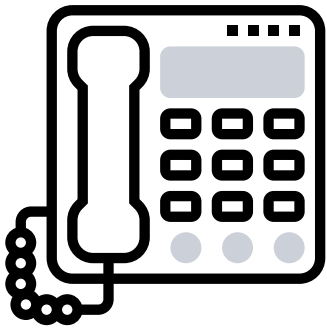
## What to do



### Do you meet the criteria?

If you have symptoms including:

- fever, dry cough, or shortness of breath following contact with a confirmed COVID-19 patient
- fever, dry cough, or shortness of breath following international travel to affected areas



### Call the 24/7 nurse hotline

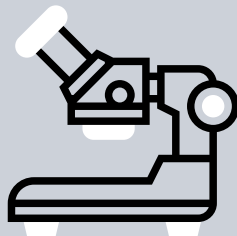
It is important to call ahead. They will provide guidance on next steps.

- 419-251-4000
- 419-291-5355

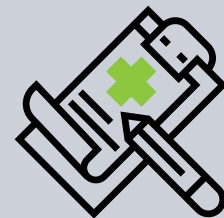
**Testing process:** patient should stay isolated while waiting for results.



**1.** Get tested.



**2.** Test sent to the lab.



**3.** Test results delivered.

### Contact investigation

The local health department will begin a contact investigation to identify potential spread.



### High & medium risk

These people had the most contact with the infected individual. They should self-quarantine for 14 days.

### Low risk

These people had minimal contact with the infected individual. They should self-monitor for symptoms.