

# Mater Christi College

A High School for Girls, Melbourne Australia





# Mater Christi College

- Established by the Catholic Sisters of the Good Samaritan in 1963
- Founded on Benedictine values
  - Community, Hospitality, Balance, Stewardship ...
- Welcome students of all religions and cultural backgrounds
- Proud of the success of our international students since 1989





## Why an all-girls education?

- Girls learn differently to boys
- Girls are motivated and respond differently
- Research findings
  - Academic advantages
  - Role models and leadership
  - Reduce negative influences
    - Less embarrassment / harassment
  - Tailored curriculum
  - Countless opportunities



A classroom scene with a teacher pointing at a whiteboard and students watching, with a large window showing autumn foliage.

# **10 reasons why international students succeed at Mater Christi College**





# 1. Skilled, professional, caring teachers

Mater Christi College leaders and teachers

- Highly qualified
- Experienced
- Approachable
- Respectful
- Committed
- Collaborative

Understand additional responsibility for international students



## 2. Contemporary teaching to prepare for university

- Small class sizes
  - Year 11 / 12 – average 18
  - Year 7-10 – average 25
- Develop whole person
  - Academic, Social, Emotional, Physical
- Preparation for changing future
- Develop capacity as learners
  - Communication
  - Collaboration
  - Creative
  - Critical thinking





### 3. Extensive curriculum choice and co-curricular opportunities

- Senior Curriculum
  - Victorian Certificate of Education (VCE)
  - Recognised by universities in Australia & Internationally
  - Students choose 5 or 6 subjects from over 30 options
- Co-Curriculum
  - Extensive excursion and incursion programs
  - Music, sport, leadership, dance, drama, outdoor education, public speaking, academic competitions, community service, camps, travel...
  - New experiences









## 4. Vibrant and inclusive school community

- Welcoming and friendly community
- Celebrate the 'can-do' energy of girls
- Build confident, happy students
- Balance of academic and community activities





## 5. Optimum size international program (3-5%)

- Medium sized local school – 800 students
- 30 international students
- Each student is known, challenged and supported
- More opportunity to connect with local students
- Allows better communication with families
- Allows good level of support services





## 6. On-campus English & Preparation Program

- Stable transition to new environment
- Small groups – approx. 5 students
- Tailored programs – English/Mainstream
- Flexible duration
- Builds confidence

No extra fees in the English & Preparation Program



## 7. Extensive support services including guardianship

### Homestay and Guardianship

- Homestay organised and supervised by the College
- Diverse Homestay options
- College Principal responsible for welfare
- No additional guardianship fee

### Other services at no extra cost

- Additional academic support – tutoring during and after school
- Experienced EAL teachers
- Personal advice for subject selection & university application
- Support for banking, transport, health insurance
- Counselling and nursing services
- Airport reception for new arrivals







## 8. Modern facilities & technology

- Modern and comfortable classrooms, laboratories, study areas
- Contemporary room and furniture design
- Latest technologies
  - Full campus wifi
  - Individual devices
  - e-learning infrastructure
  - 3D printing





$$y = \frac{6}{5}x + \frac{21}{5}$$
$$\frac{11}{5}x + \frac{17}{5} = \frac{17}{5}x$$
$$11x + 17 = 17x$$
$$6x = 17$$













## 9. Beautiful environment and safe location

- Melbourne
  - Excellent universities
  - Cosmopolitan and multicultural city
- Belgrave
  - Approx. 1 hour from Melbourne CBD
  - Popular tourist location
  - Clean, green, hills landscape
  - Safe, peaceful environment
  - 5 minute walk to metro, shops



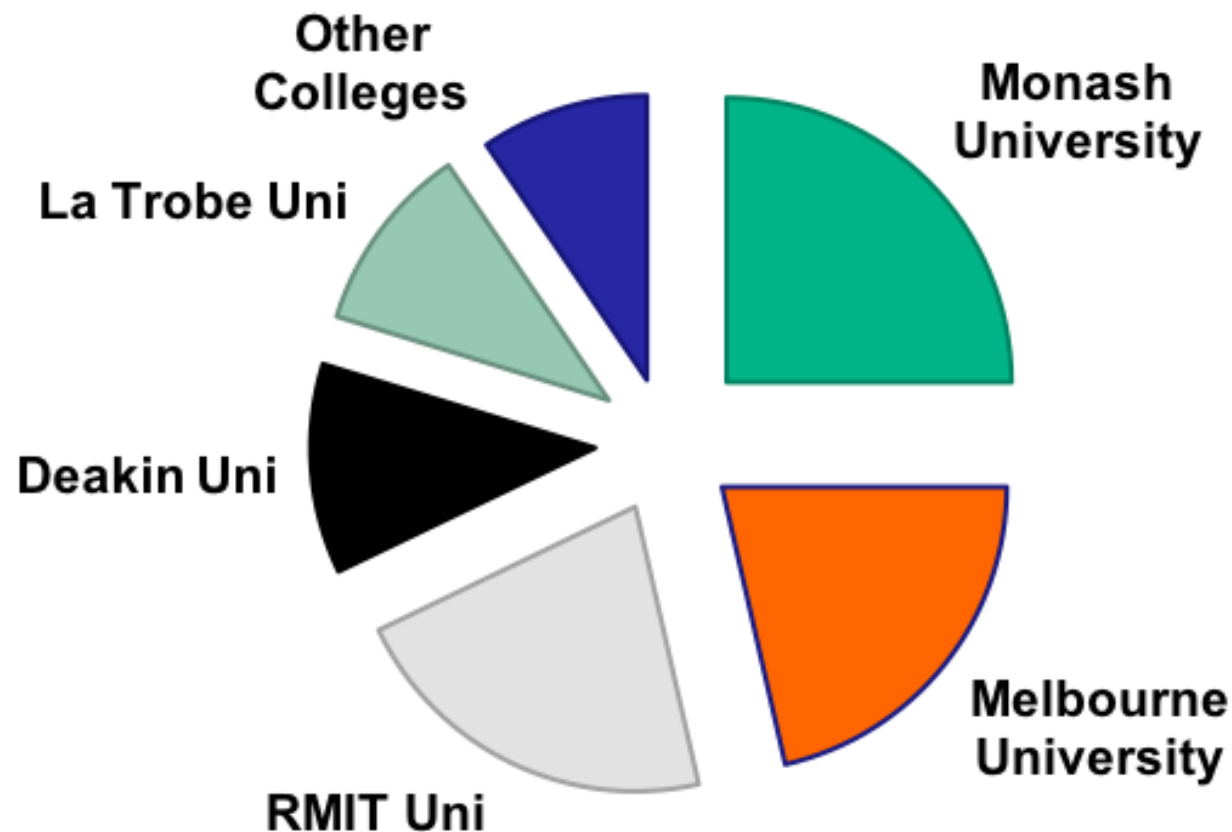






## 10. Highly successful outcomes: 95% international students enter university

**International Student Destinations (5 years)**





## Girls are encouraged to explore the possibilities ...

### University of Melbourne

- Engineering
- Biomedical Science
- Commerce
- Optometry
- Design

### Deakin University

- Teaching – Secondary / Arts
- Biological Science
- Commerce
- Environmental Management
- Media & Communications

### RMIT University

- Marketing
- Economics & Finance
- Chemical Engineering
- Fashion Design

### La Trobe University

- Nutritional Science
- Tourism & Hospitality

### Swinburne University of Technology

- Business / Marketing
- Air Transportation Management
- Social Science

### Monash University

- Aerospace Engineering
- Accounting
- Engineering
- Nursing
- Psychology & Management



THE UNIVERSITY OF  
MELBOURNE

Mater Christi College is a member of the Melbourne Schools Partnership International (MSPI) with the University of Melbourne.

- Guaranteed pathway for students who meet entry requirements
- 20 year relationship
- MSPI Awards, on-campus programs



# Applying to Mater Christi College

## Entry Requirements

Grade Average of 80% or equivalent OR  
Good learner with positive attitude, social skills,  
maturity

## When to Apply

Flexible. Commence at  
start of every term

- Term 1: late January
- Term 2: mid-April
- Term 3: mid-July
- Term 4: early October

## How to Apply

**Step 1.** Read Terms and  
Conditions of Enrolment

**Step 2.** Submit the simple  
Application Form

**Step 3.** Accept our offer

**Step 4.** Apply for your  
student visa

**Step 5.** Arrange travel

...and then, a very exciting  
journey begins



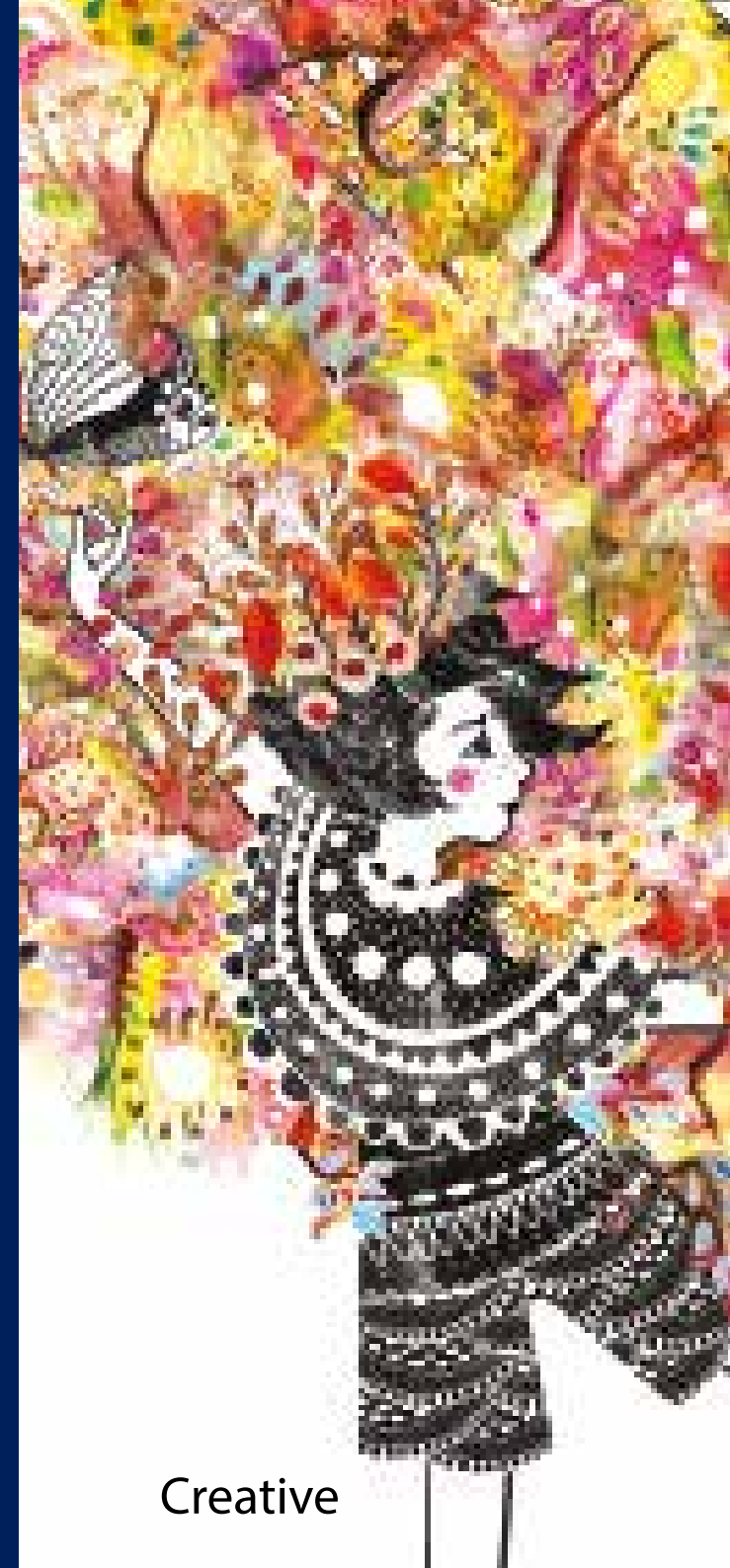




Informed



Compassionate



Creative