



# 4th Generation

## UniDirectional Captive Displacement Prover

PATENT PENDING

### Flow Management Devices' 4th Generation Unidirectional Captive Displacement Prover raises the bar for Small Volume Provers



We listened!

Customer input and field experience are the driving forces behind FMD's 4th Generation Prover.

#### 4th Generation Features Include:

- New piston and poppet design
- Minimal flow disturbance
- Increased measurement volume
- Improved performance
  - Ultrasonic
  - Coriolis
- Lighter weight
- Easily handles heavy crude
- Stainless drive end
- Longer seal life
- New PIM with large display

**"Improving liquid and gas measurement technology"**

Superior Design and Functionality • Ease of Installation • Customer Service Excellence

Flow Management Devices, LLC

5225 S. 37th St #4 - Phoenix, AZ 85040

+1.602.233.9885 • E: [sales@flowmd.com](mailto:sales@flowmd.com) • [www.flowmd.com](http://www.flowmd.com)

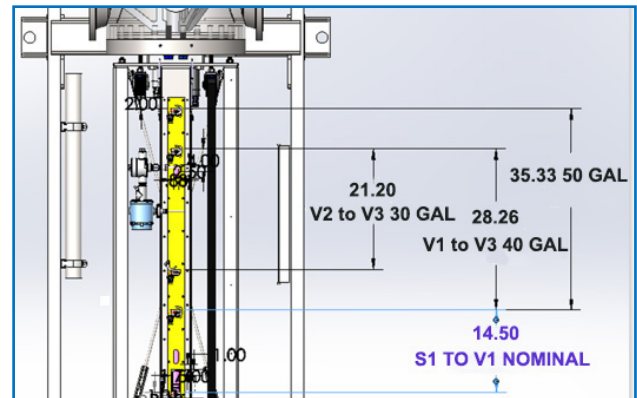
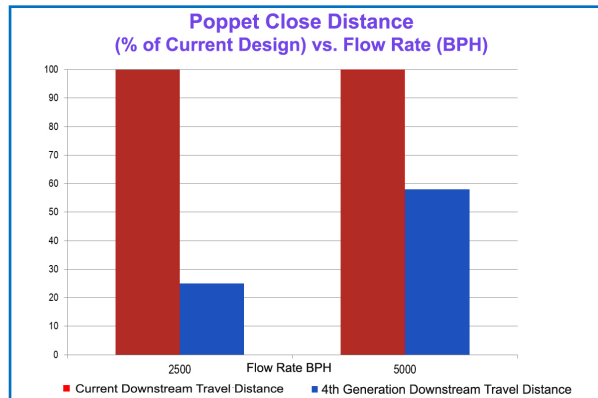
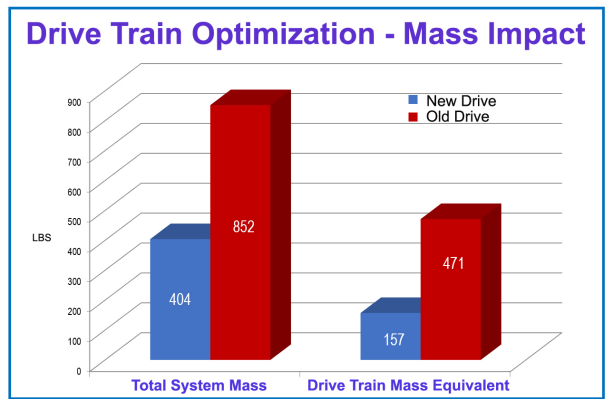
# Key Features of the FMD 4th Generation Prover

## Decreased Weight

The newly designed drive end reduces mass and weight by approximately 40%. This reduction in weight optimizes the speed of the poppet closure, allowing the assembly to reach flow velocity or stabilize flow faster. The lighter weight piston and poppet assembly improves closure time and reduces pre-run or run-up time while minimizing flow disturbances.

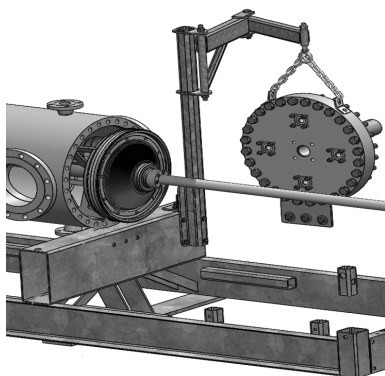
## Increased Volume

The redesign of the piston and poppet assembly increases measurement volume and provides smoother operation. Simply put, the faster the poppet closes, the more volume available for measurement.



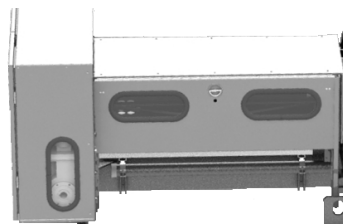
## Improved Serviceability & Safety

### Piston and Poppet



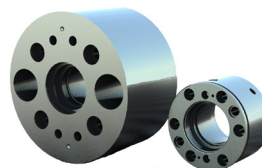
Seal changes simplified by readily accessible piston and poppet. Davit arm option available.

### Drive Train



Observation windows added as a safety feature to allow visual access to the drive end.

### Seal Retainer



Fewer parts and less weight allows for ease of servicing.

Contact Us to Today to Discuss your Proving Application

+1.602.233.9885 • [sales@flowmd.com](mailto:sales@flowmd.com) • [www.flowmd.com](http://www.flowmd.com)

