

FMD090

Data Sheet

Unidirectional Captive Displacement Prover



The Flow MD Unidirectional Captive Displacement Provers set the standard in small volume proving. With an innovative and patented drive-end, the Flow MD line of provers provides superior design and functionality.



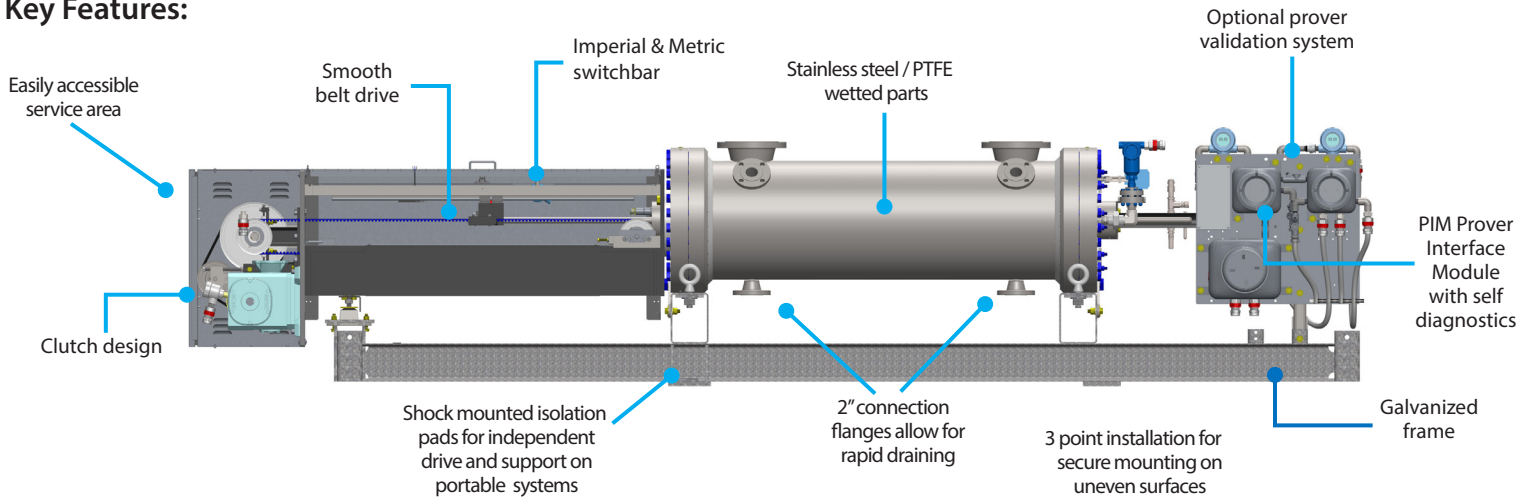
FMD090 Specifications

Max Flow Rate	GPM	BPH	M ³ H	
	9,000	12,850	2,000	
Displaced Volume	Gallons		Liters	
	Primary	Secondary	Primary	Secondary
	75	40	250	200
Std Flange Size	12" ANSI			
Turndown	1200 : 1			

Approvals & Certifications

ISO	9001:2008 Cert# 0110-156-2, 17025:2005 Cert # L14240
EC	Mach Dir:2006/42/EC, EN 12100-2:2003, ATEX Directive 94/9/EC, EN 13463-1:2009, EN 13463-5:2003, EN 60079-0, EN 60079-7, EN 60079-11
CSA (US & Canada)	Class 3218 06, Class 1 Div 1 Group D; Class 1 Div 2 Group D / Clutch & Brake Assembly - EX m IIC T5
IECEX	USA /ETL/QAR 15.0014/00, 101653329CRT-002
ABSA	CRN: 0F1072.2

Key Features:

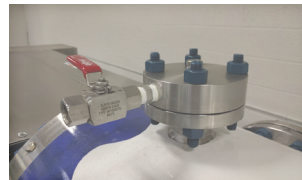


Included in Standard Prover Package

P.I.M Electronics Module



Vent Manifolds (2)



Electrical Connections



Check out the Prover Accessories Brochure for additional options

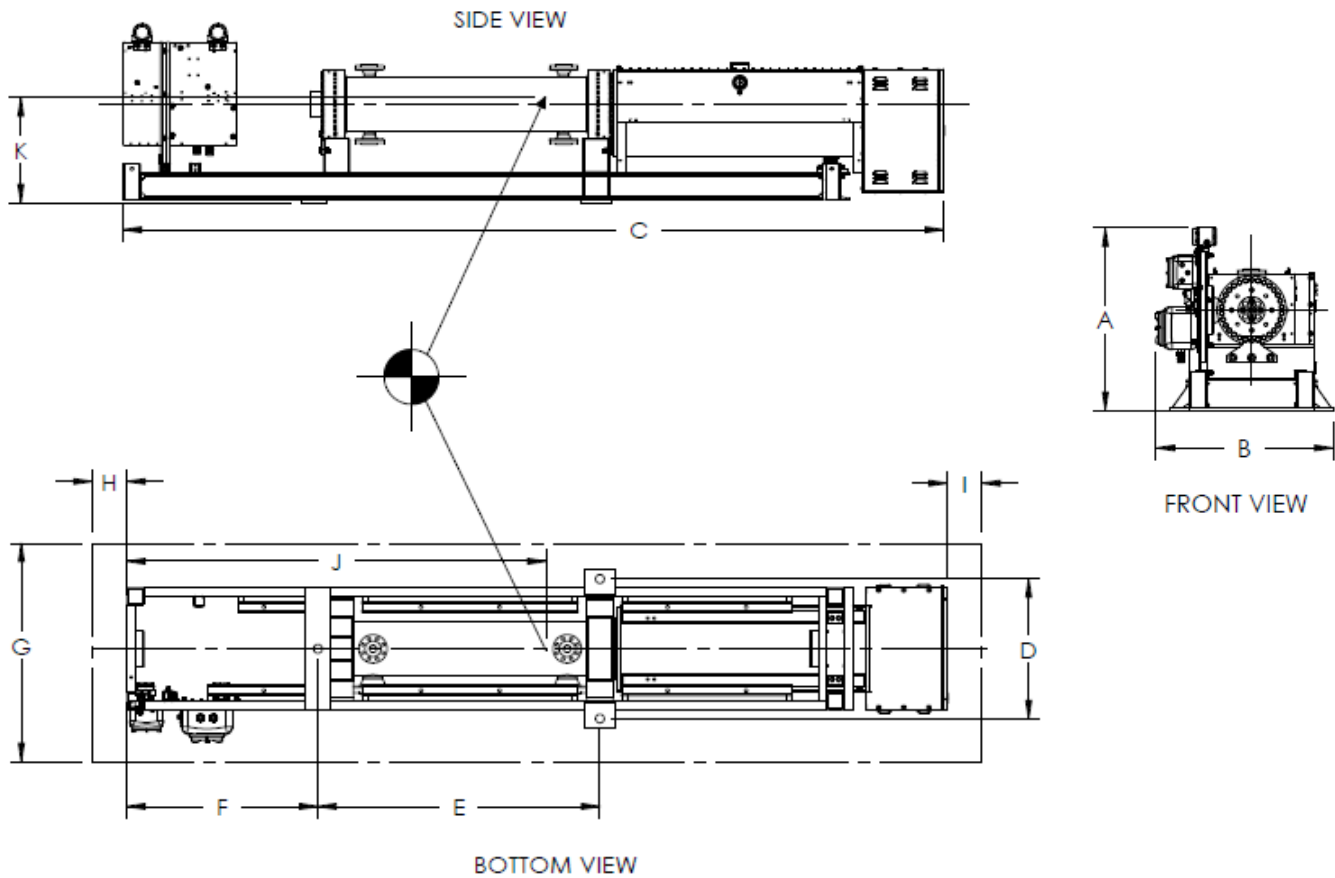
"In pursuit of improving liquid and gas measurement technology"

Flow Management Devices, LLC

+1.602.233.9885
 F: 602.233.9887
 E: sales@flowmd.com
 www.flowmd.com
 5225 S. 37th St # 4
 Phoenix, AZ 85040 USA

FMD090

Dimensional Drawings



Weights	Weight (+/- 5%)		Weight w/ Crate (+/- 5%) LBS	Weight Filled w/ Water (+/- 5%) LBS
	LBS	KGS		
ANSI Pressure 150 #	11,000	4,989	12,050	12,670
ANSI Pressure 300 #	11,120	5,044	12,170	12,790
ANSI Pressure 600 #	12,270	5,565	13,320	13,940
ANSI Pressure 900 #	12,470	5,656	13,520	14,140

Dimensions (inches)		A	B	C	D	E	F	G	H	I	J	K
Model	Pressure Rating											
FMD090	150/300 #	56	66	244	58	90	65	126	30	30	124	34
FMD090	600/900 #	58	66	244	58	92	63	126	30	30	124	34

Drawing Notes:

- DIMENSIONS "J" AND "K" ARE FOR CENTER OF GRAVITY WITHIN 6 INCHES
- DIMENSIONS "A", "B" AND "C" ARE OVERALL DIMENSIONS
- SPACIAL DIMENSIONS HAVE A TOLERANCE OF +/- 1.00 INCHES
- DIMENSIONS "G", "H" AND "I" ARE FOR SERVICE ZONE
- ALL DIMENSIONS ARE SUBJECT TO CHANGE WITHOUT NOTICE

Energy Consumption	Motor Voltage/Phase Availability & Amperage Draw								
	Motor Size	220 VAC 3 PHZ	240 VAC 3 PHZ	208/230 VAC 3 PHZ	380 VAC 3 PHZ	400VAC 3 PHZ	440 VAC 3 PHZ	460 VAC 3 PHZ	480 VAC 3 PHZ
	3 hp	8.6**	8.6**	8.6**	5.2**	5.2**	4.3**	4.3**	4.3**

** 50 OR 60 Hz Operation

