

# FMD060

## Data Sheet

### Unidirectional Captive Displacement Prover



The Flow MD Unidirectional Captive Displacement Provers set the standard in small volume proving. With an innovative and patented drive-end, the Flow MD line of provers provides superior design and functionality.



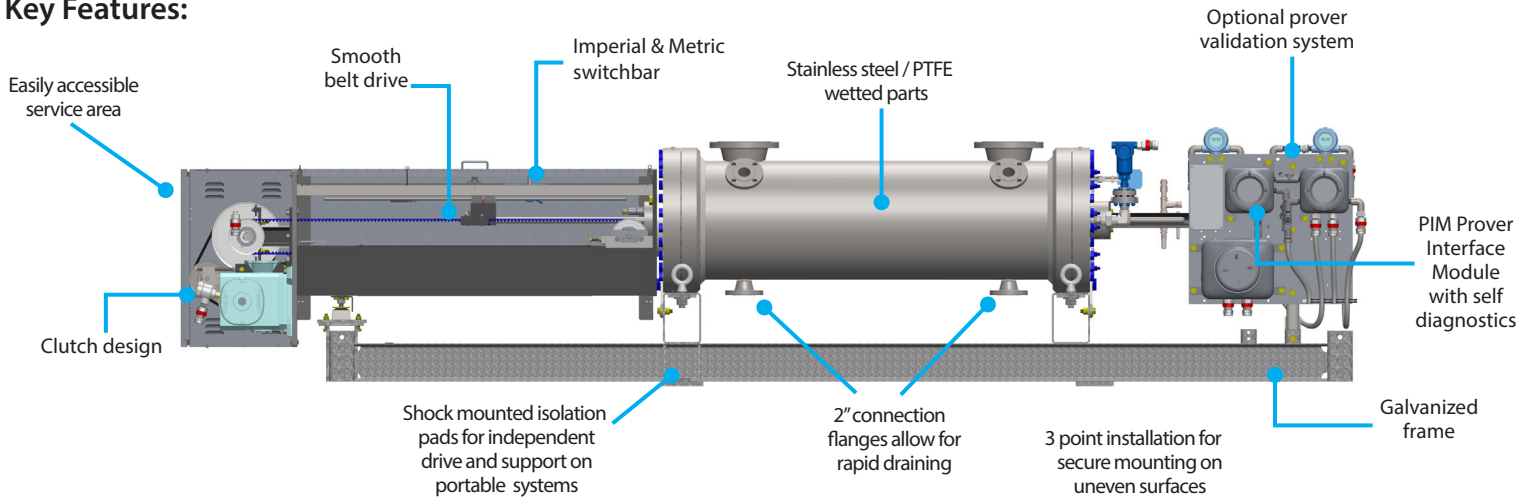
#### FMD060 Specifications

Max Flow Rate	GPM	BPH	M <sup>3</sup> H	
	6,000	8,500	1,350	
Displaced Volume	Gallons		Liters	
	Primary	Secondary	Primary	Secondary
	40	30	150	120
Std Flange Size	10" ANSI			
Turndown	1200 : 1			

#### Approvals & Certifications

ISO	9001:2008 Cert# 0110-156-2, 17025:2005 Cert # L14240
EC	Mach Dir:2006/42/EC, EN 12100-2:2003, ATEX Directive 94/9/EC, EN 13463-1:2009, EN 13463-5:2003, EN 60079-0, EN 60079-7, EN 60079-11
CSA (US & Canada)	Class 3218 06, Class 1 Div 1 Group D; Class 1 Div 2 Group D / Clutch & Brake Assembly - EX m IIC T5
IECEX	USA /ETL/QAR 15.0014/00, 101653329CRT-002
ABSA	CRN: OF1072.2

#### Key Features:



Included in Standard Prover Package	P.I.M Electronics Module	Vent Manifolds (2)	Electrical Connections

Check out the Prover Accessories Brochure for additional options

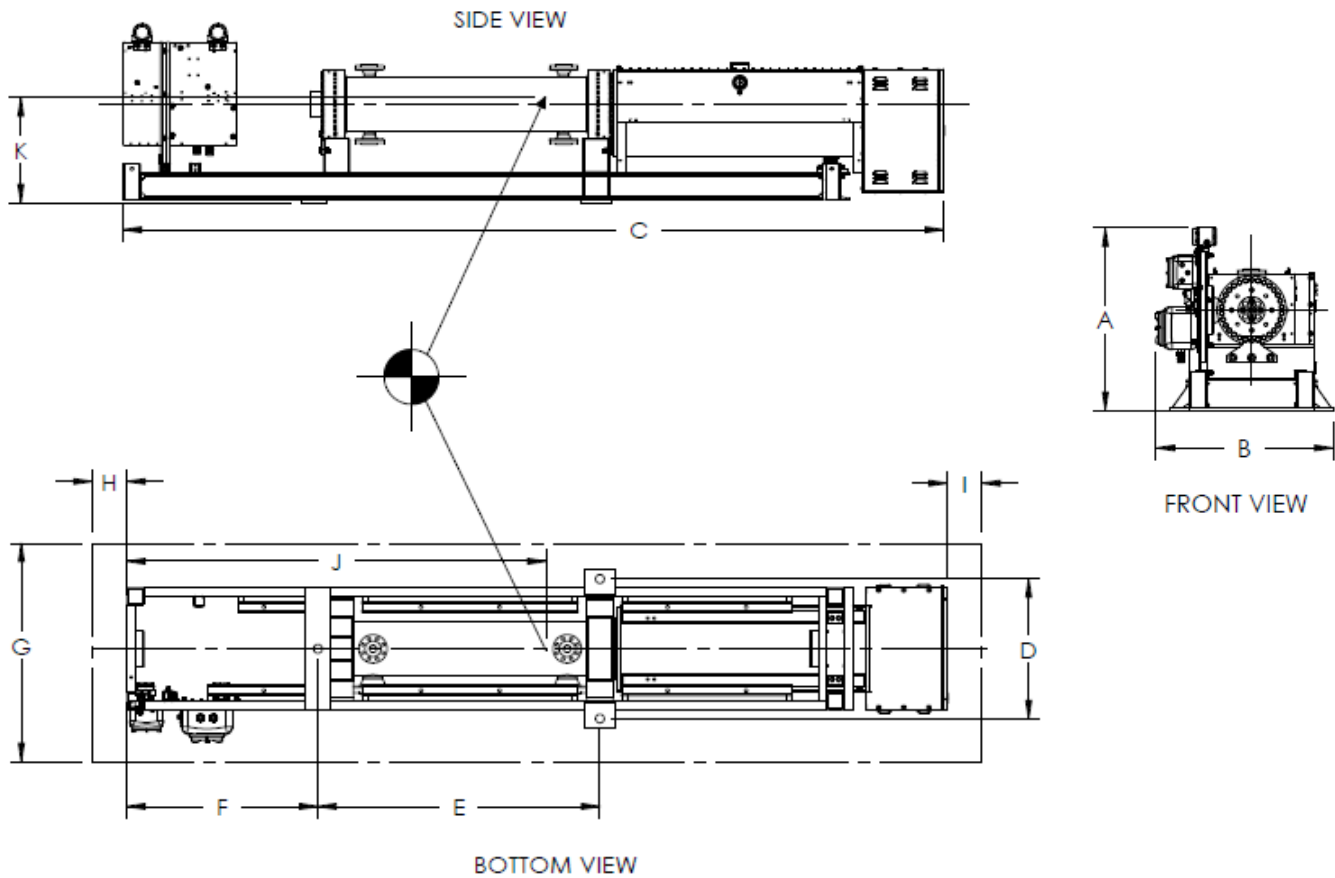
"In pursuit of improving liquid and gas measurement technology"

# Flow Management Devices, LLC

+1.602.233.9885  
 F: 602.233.9887  
 E: sales@flowmd.com  
 www.flowmd.com  
 5225 S. 37th St # 4  
 Phoenix, AZ 85040 USA

# FMD060

## Dimensional Drawings



Weights	Weight (+/- 5%)		Weight w/ Crate (+/- 5%) LBS	Weight Filled w/ Water (+/- 5%) LBS
	LBS	KGS		
ANSI Pressure 150 #	9,300	4,216	10,150	10,310
ANSI Pressure 300 #	9,370	4,252	10,220	10,390
ANSI Pressure 600 #	9,830	4,458	10,680	10,850
ANSI Pressure 900 #	10,000	4,536	10,850	11,020

Dimensions (inches)		A	B	C	D	E	F	G	H	I	J	K
Model	Pressure Rating											
FMD060	150/300 #	49	55	241	47	89	65	115	30	30	132	29
FMD060	600/900 #	52	55	241	47	93	61	115	30	30	132	29

### Drawing Notes:

- DIMENSIONS "J" AND "K" ARE FOR CENTER OF GRAVITY WITHIN 6 INCHES
- DIMENSIONS "A", "B" AND "C" ARE OVERALL DIMENSIONS
- SPACIAL DIMENSIONS HAVE A TOLERANCE OF +/- 1.00 INCHES
- DIMENSIONS "G", "H" AND "I" ARE FOR SERVICE ZONE
- ALL DIMENSIONS ARE SUBJECT TO CHANGE WITHOUT NOTICE

Energy Consumption	Motor Voltage/Phase Availability & Amperage Draw								
	Motor Size	120 VAC	220 VAC	220 VAC 3 PHZ	240 VAC 3 PHZ	208/230 VAC 3 PHZ	440 VAC 3 PHZ	460 VAC 3 PHZ	480 VAC 3 PHZ
	2 hp	22**	11.6**	6.5**	6.5**	6.5**	3.1**	3.1**	3.1**

\*\* 50 OR 60 Hz Operation

