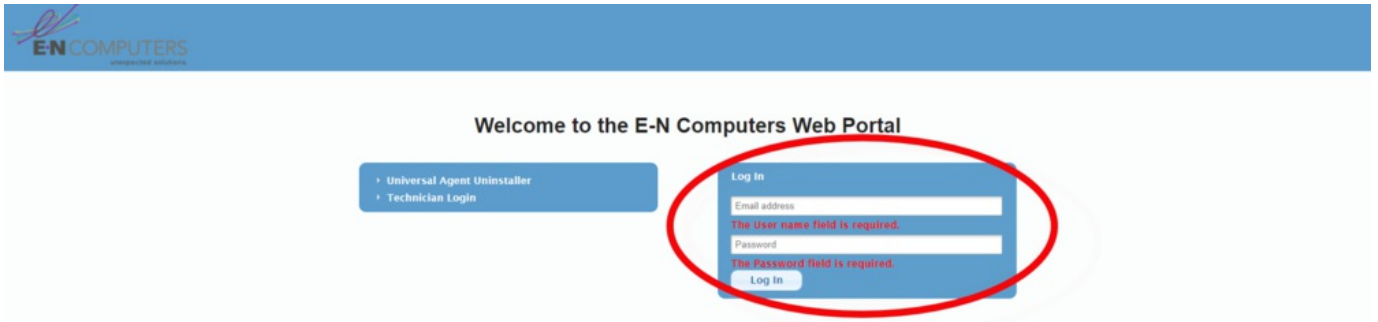
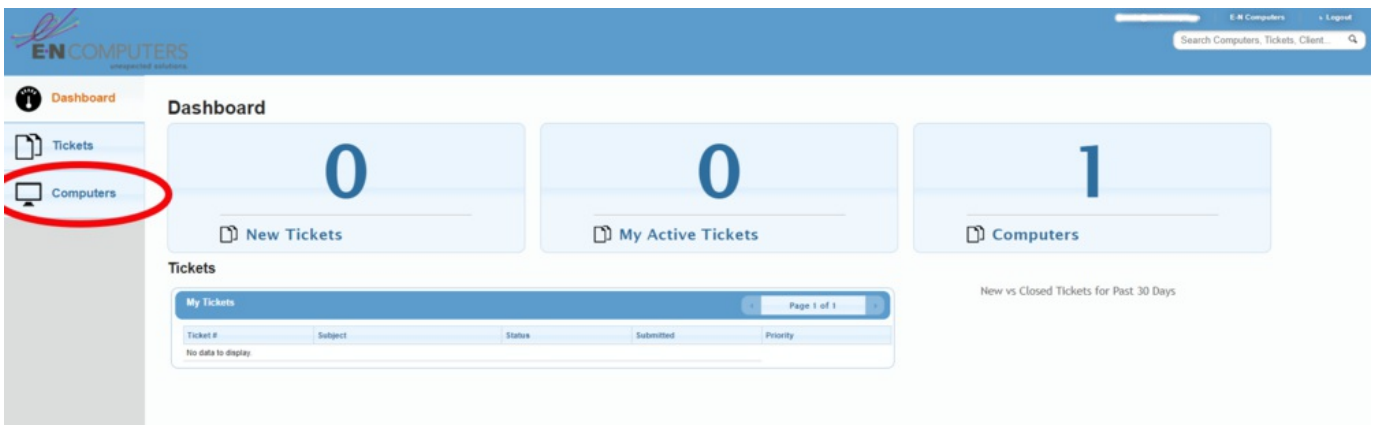


# To connect to your remote computer

1. Open a browser and go to <https://lt.encomputers.com>
2. Enter your email address and password you were given.

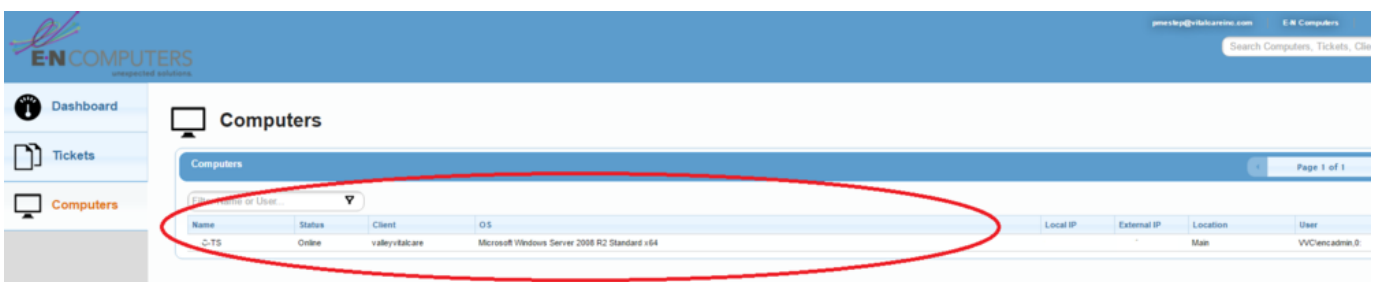


3. On the left hand side of the page, click on Computers.



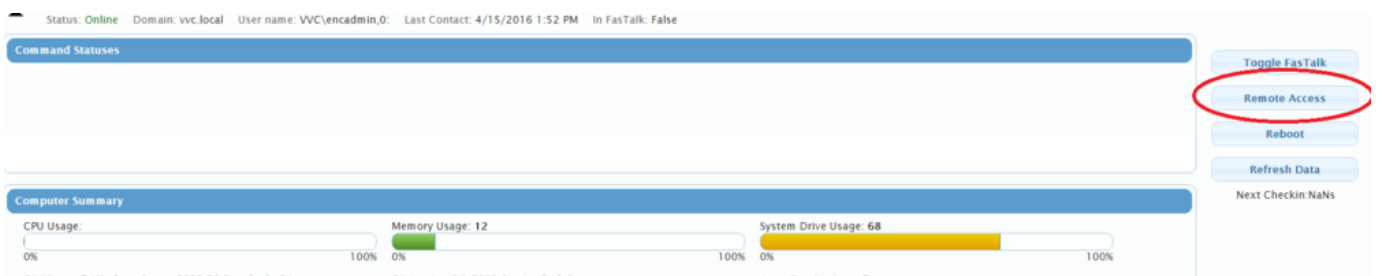
(1 minute)

4. In the center of your screen is the list of computers that you have remote access to.  
Single click on the computer you want to remotely access.



(1 minute)

5. On the right hand side of the screen, single click on Remote Access.

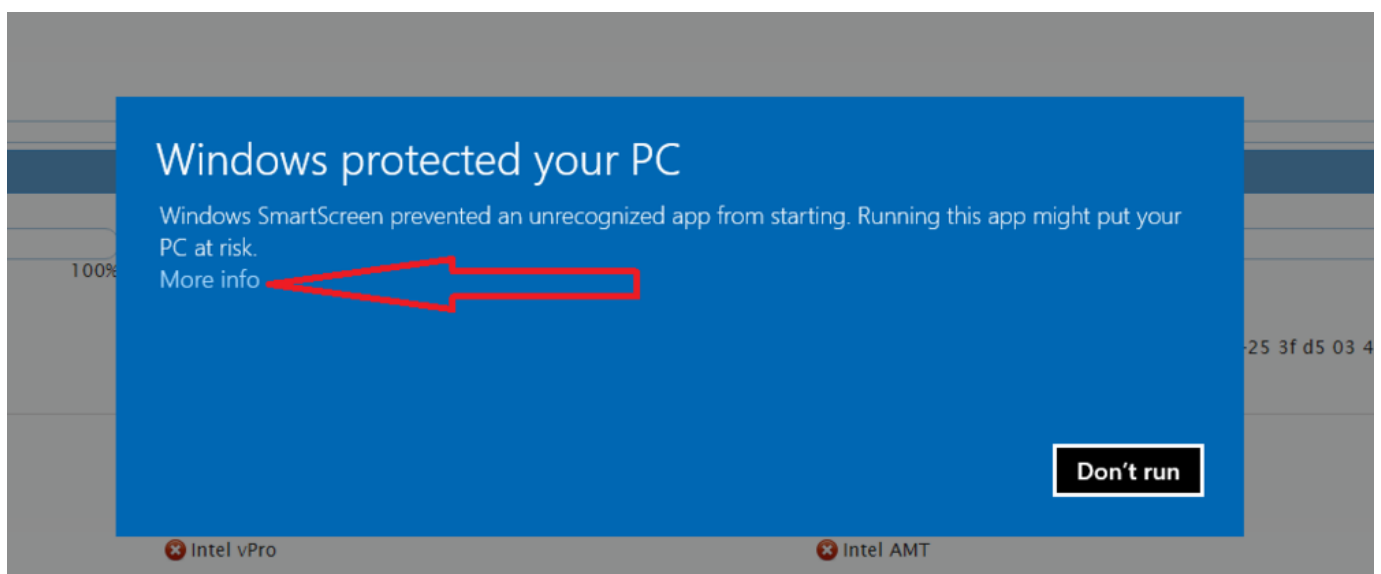


6. For Windows 7 users this will download the screen connect client.

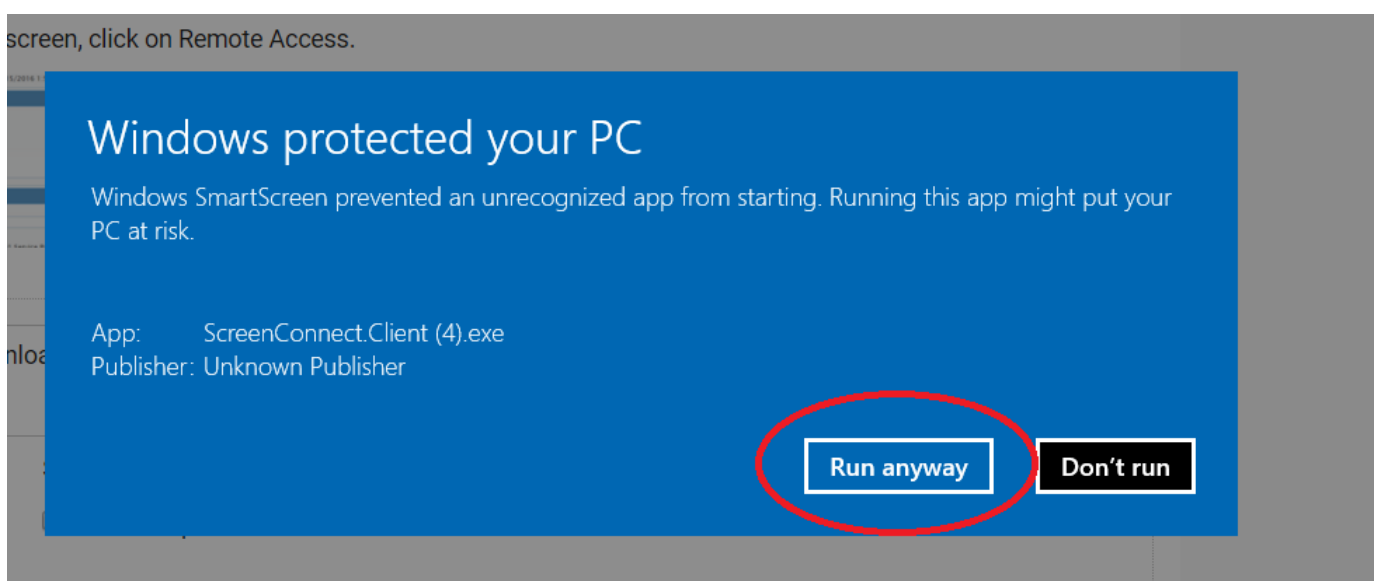
If it asks you to allow pop up, say yes.

For Windows 10 clients you may see one of the following windows pop up, dependent upon your version of Windows 10,

One may state "Windows protected your PC". Please click on More Info

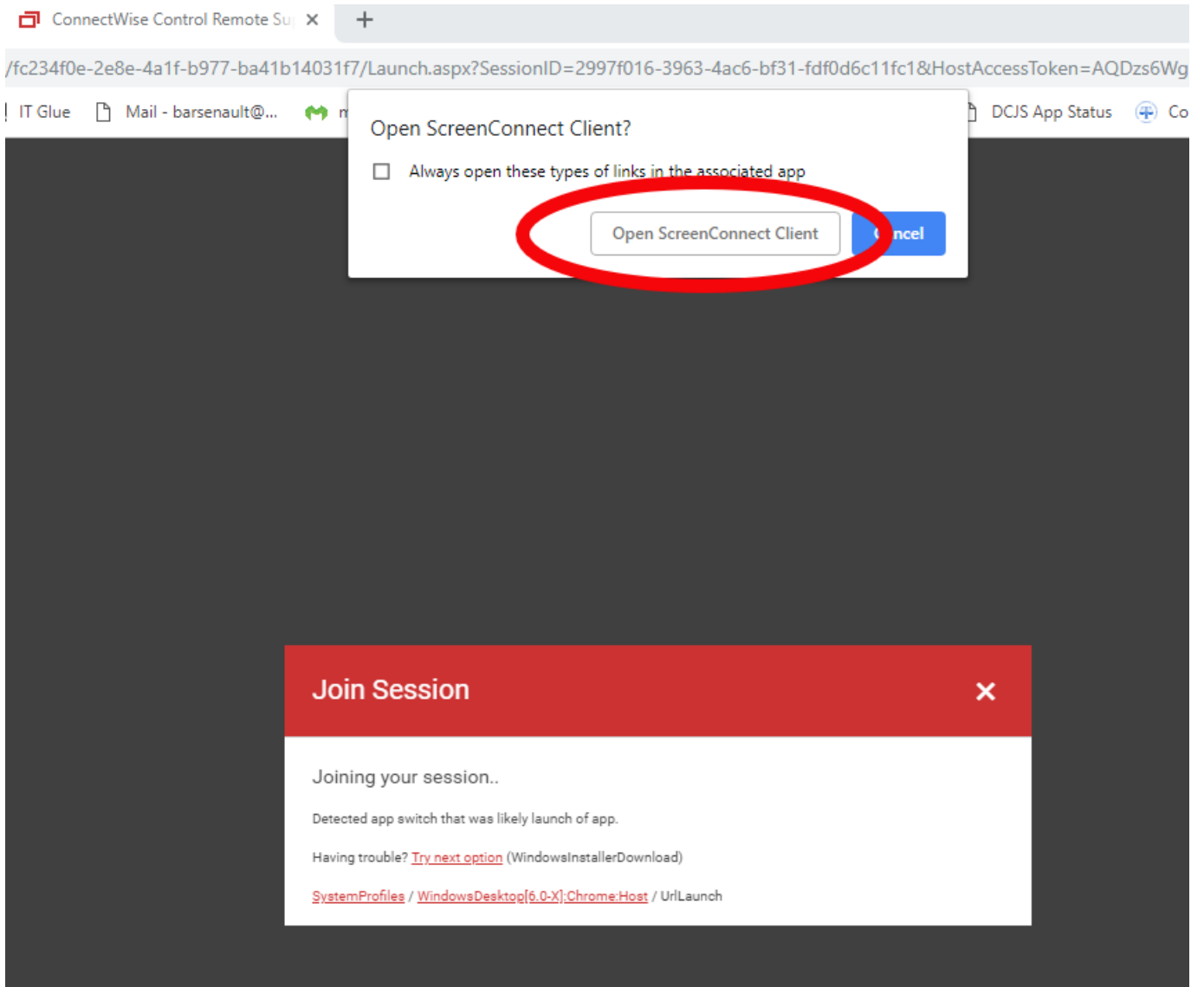


7. Click on Run anyway



8. The other may have a single button to push that states "Open ScreenConnect client"

At this point the ScreenConnect client will either open (giving you access to your PC), or download a small file that you will need to click on to install ScreenConnect

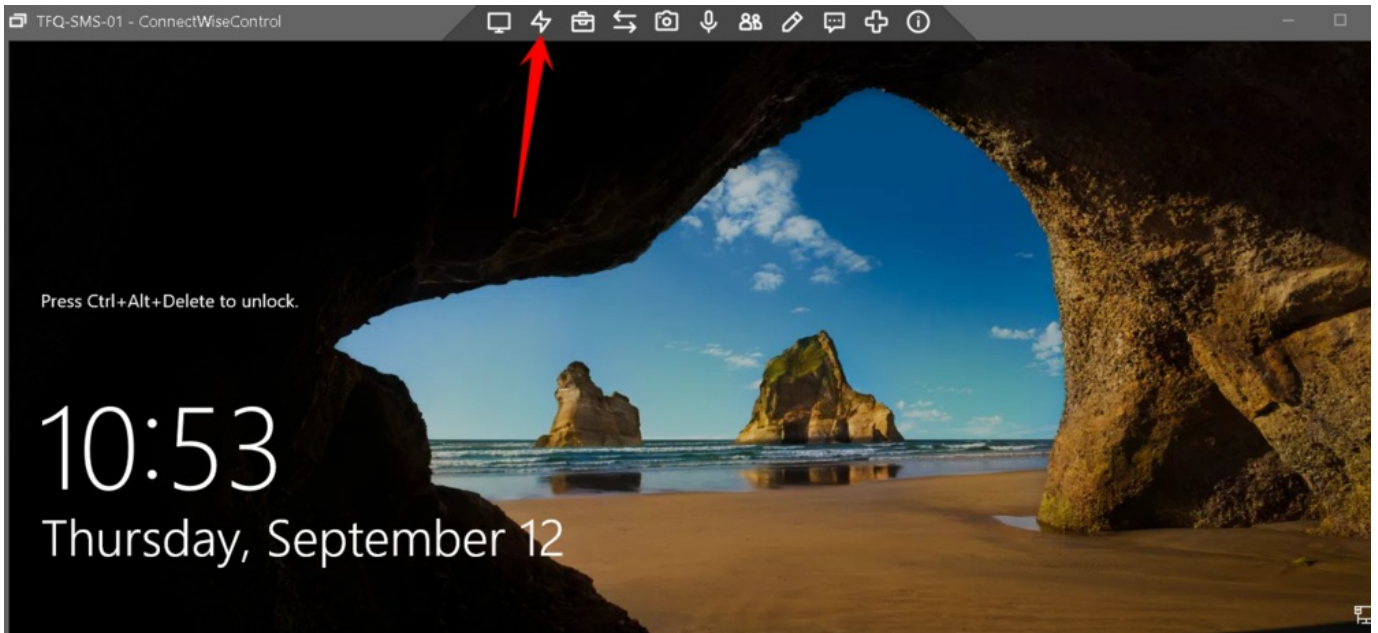


9. The remote connect screen will pop up.

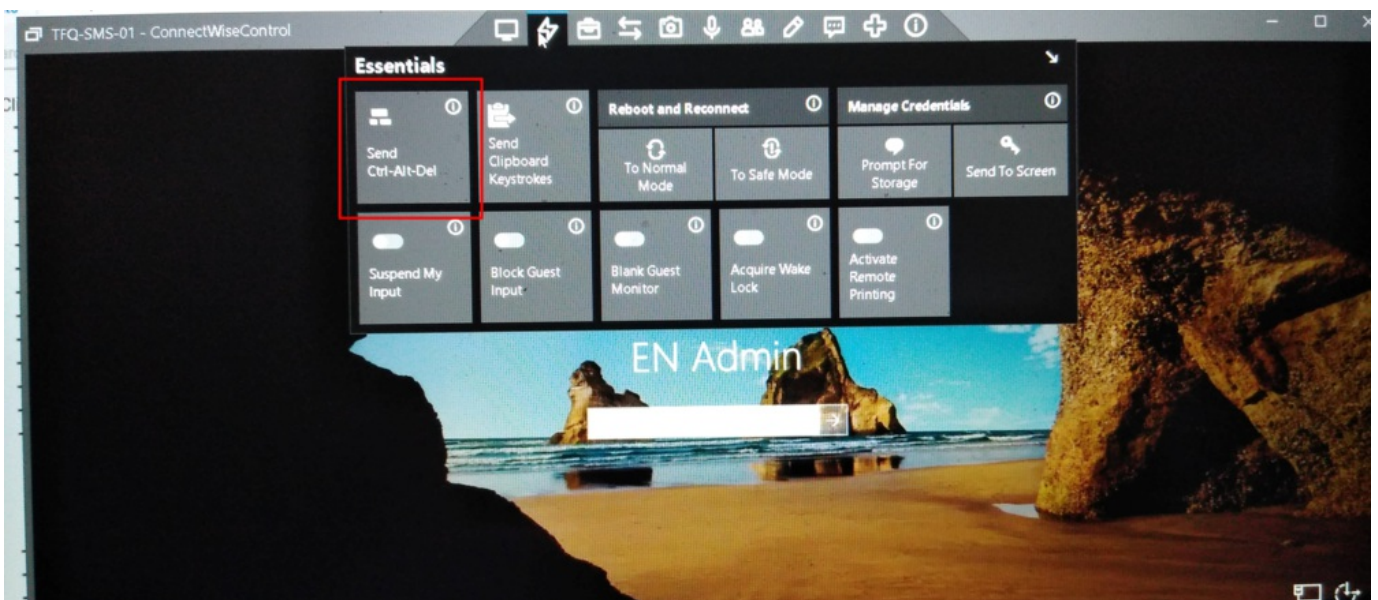


## Logging in

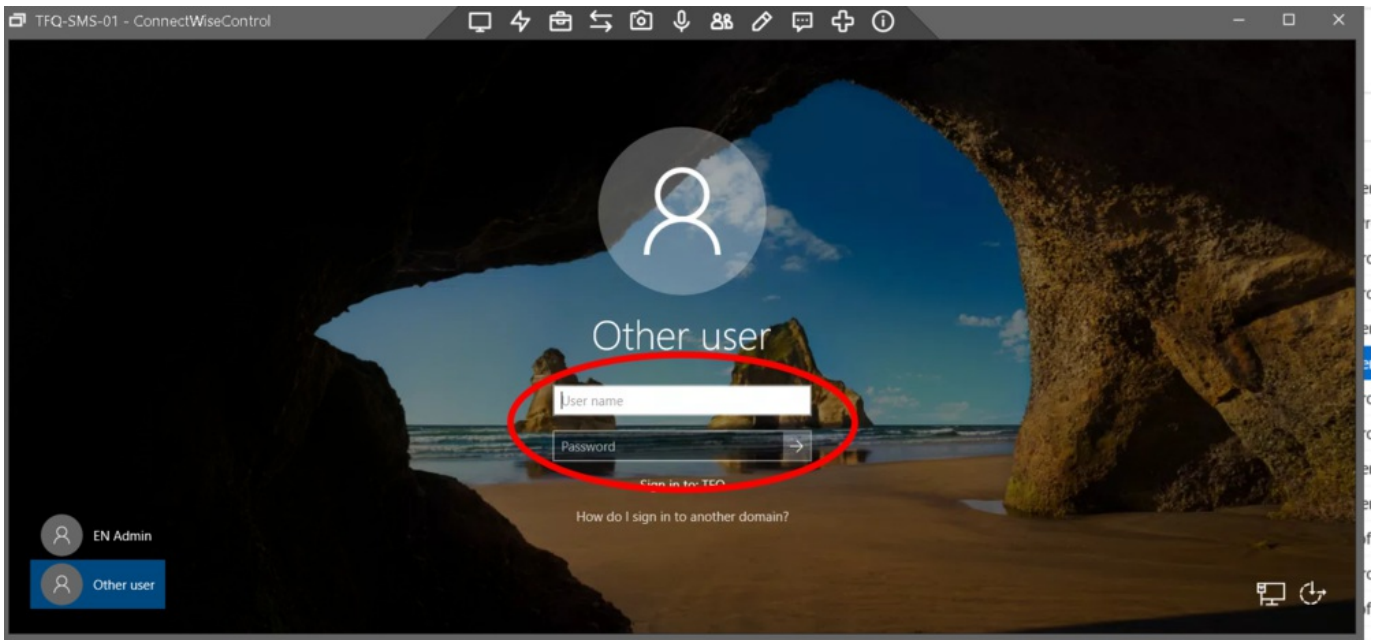
10. Click the "lightning bolt" icon at the top of the connection window.



11. Click on Ctrl-Alt-Del



12. Log in using your Windows credentials you use at the office.



**Total Duration:** 2 minutes