

Distribution/Warehouse

1137 Foust Ave. - High Point, NC



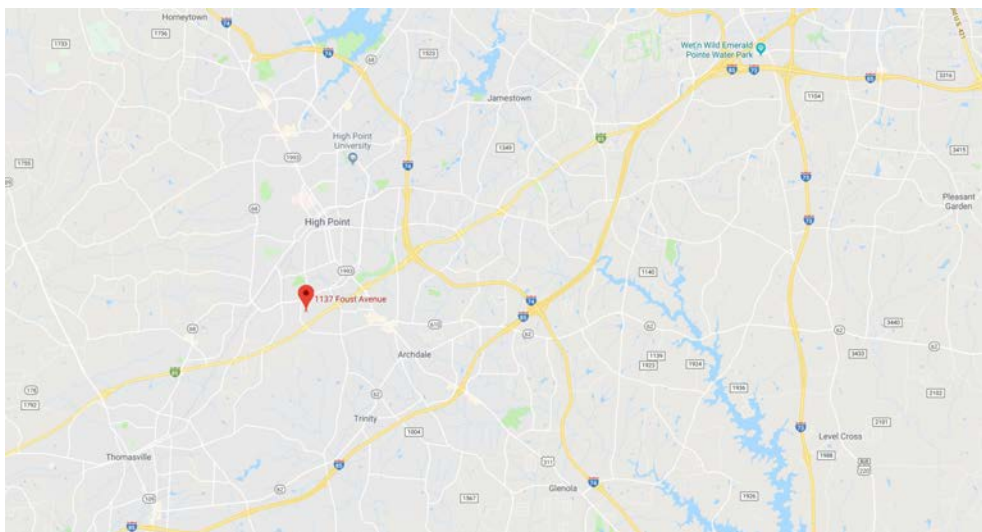
Contact:

Chris Lowe

Samet Properties, LLC
309 Gallimore Dairy Rd
Suite 102
Greensboro, NC 27409

Direct: 336.544.2620
Cell: 336.207.3245
clowe@sametcorp.com

- +/- 26,700 SF (+/- 5100 SF Office/showroom)
- - 16 Ft Clear Ceiling
- - Ordinary Hazzard Sprinkler
- - (2) – 10' x 10' Dock High Doors
- - (1) – 12' x 14' Drive in Door
- - Plenty of parking



cc: Keith Kennedy

FOR: EV L&P

SURVEY FOR DAVID R. WEBB CO.

Subdivision DENNLAND DEVELOPMENT CORP.

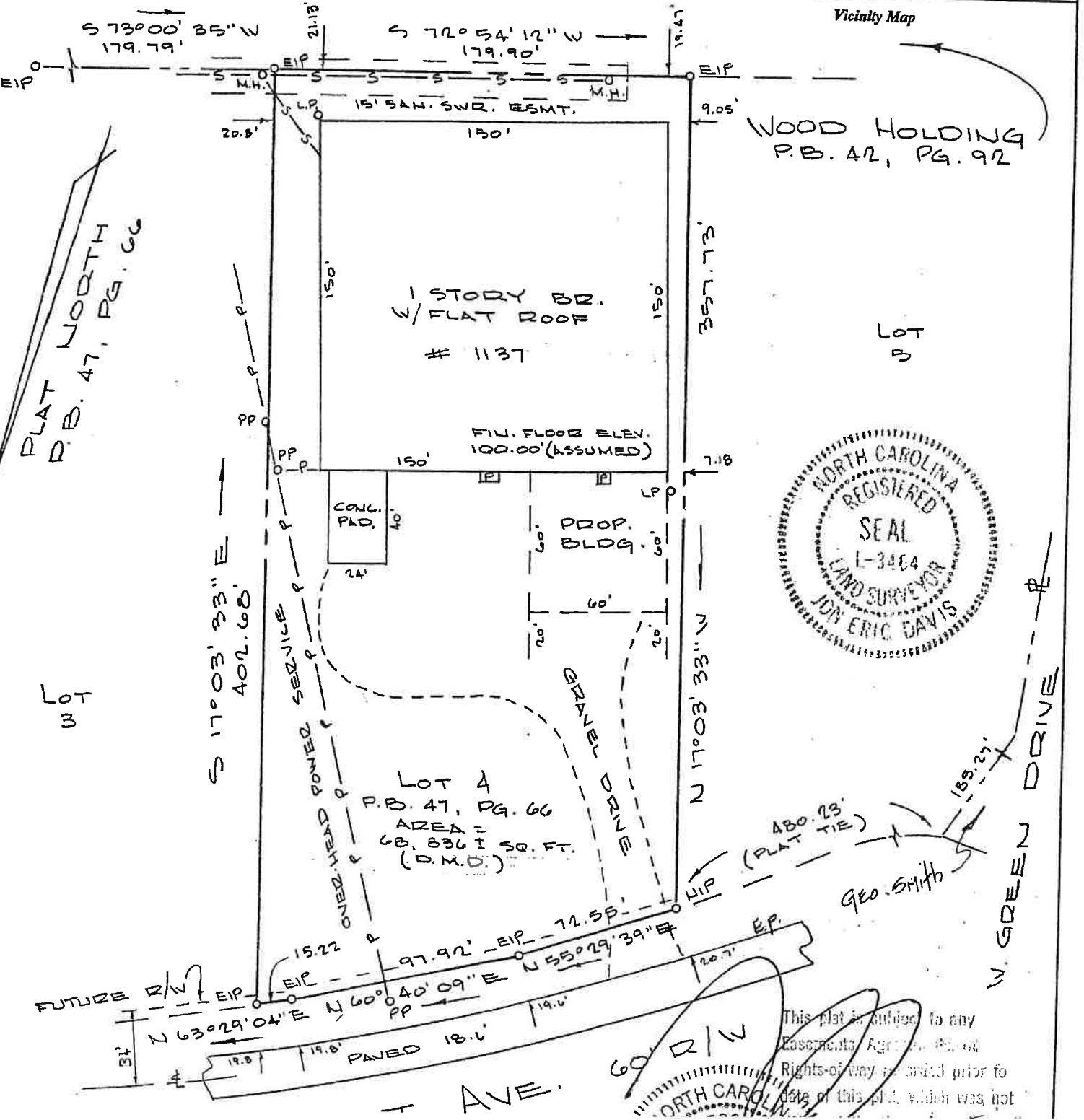
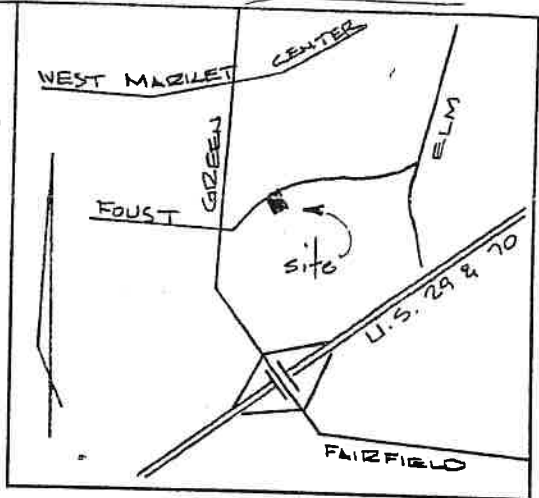
Lot(s) 4 PB 47 PG 66

Tax Parcel 97-02-15 DB 3480 PG 817

Street Address 1137 FOUST ST., HIGH POINT

Township HIGH POINT County GUILFORD State N.C.

Flood Certification: The subject property is not located in a SPECIAL FLOOD HAZARD AREA as scaled from maps furnished by HUD/FIA Flood Map subject to verification by detailed flood study. See Community Panel # 370113-0013-B.



150'

WAREHOUSE
Area
21,600#

2820#

04 06
10'x20' 10'x10' 80'

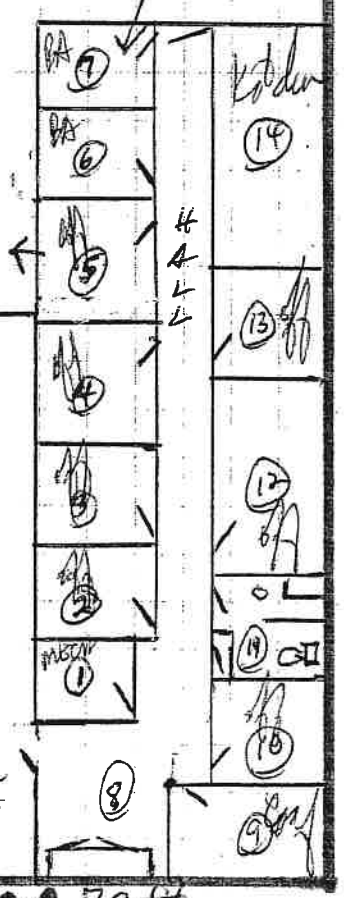
12'x4'
DRIVE
IN 3'
DOOR

Reception
Conference
n Office
Kitchen 3 Bath's mech Room

TOTAL 26700#
1 square = 5 ft.

8'x10'
DRIVE
IN

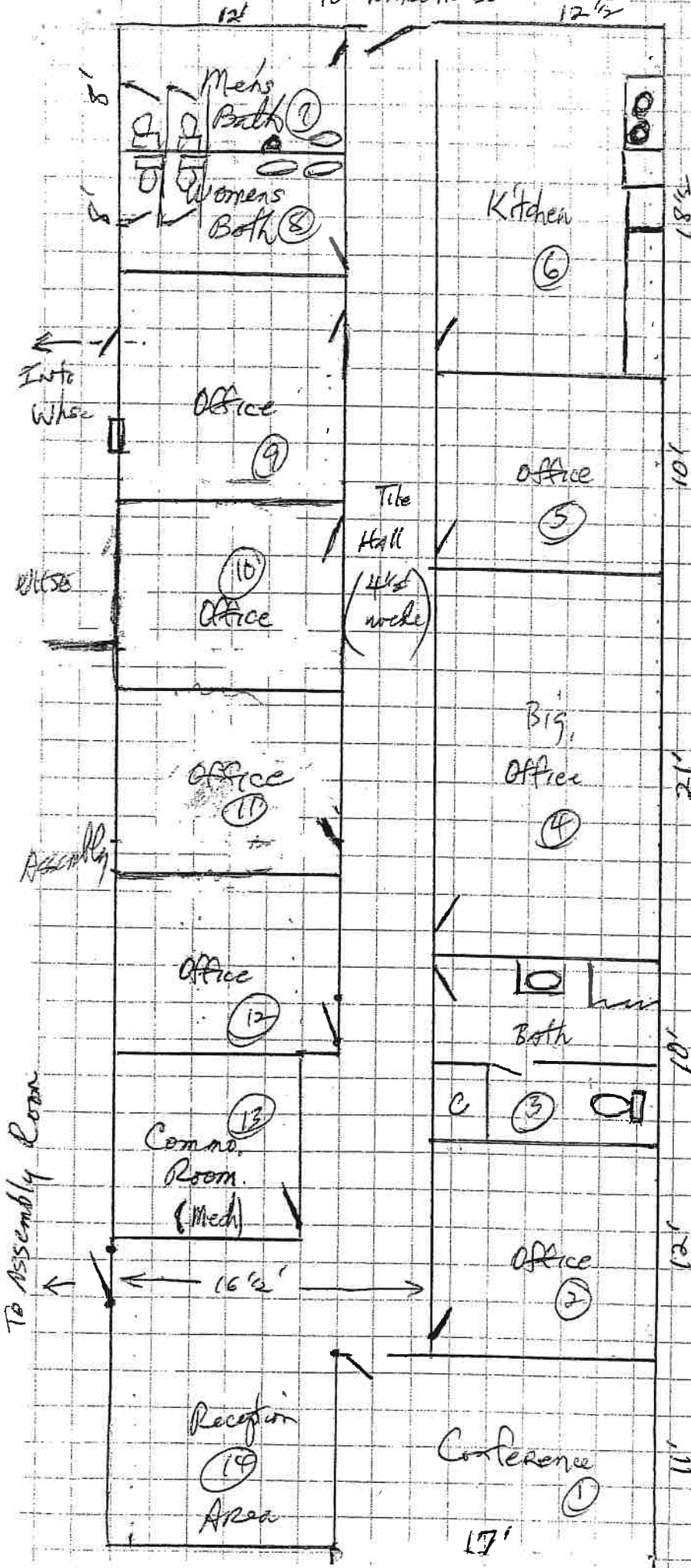
2280#
Assembly
Room
CRANE MOBILE
FRONT



210'

70 ft

Office - 282071



- ① Conference Room 11' x 17'
- ② Office 12' x 2 1/2'
- ③ Bath Room 10' x 12 1/2'
- C = wood desk 4x5
- Bath & Laboratory
{ 1 - water closet
{ stand up shower
- ④ Office 12 1/2' x 21' (ENTRANCE)
- ⑤ Office 10' x 12 1/2'
- ⑥ Full Kitchen 12 1/2' x 18 1/2'
- 1 - double sink
- 1 - range + hood
- 1 - dish washer
- cabinets
- ⑦ Men's Bath Room
- 2 - water closets 8' x 12'
- 1 - mirror
- 2 - lavatories
- ⑧ Ladies Bath Room
- 2 - water closets 8' x 12'
- 2 - lavatories
- ⑨ Office 12' x 12'
- (Entrance + window to warehouse)
- ⑩ Office 10' x 12'
- ⑪ Office 10' x 12'
- ⑫ Office 10' x 12'
- ⑬ Office 10' x 12'
- ⑭ Office 10' x 12'
- ⑮ Office 10' x 12'
- ⑯ Office 10' x 12'
- ⑰ Office 10' x 12'
- ⑱ Office 10' x 12'
- ⑲ Comm. Room (with) 9 1/2' x 10'