



Rollershield Drainage EIFS

07 24 19

Class PB Drainage Exterior Insulation and Finish System

Features & Benefits

- 99% Drainage Efficiency
- High Insulating Value (R-4 per inch)
- CFC & HCFC Free Insulation Board, Recyclable
- Medium Impact Resistance is standard

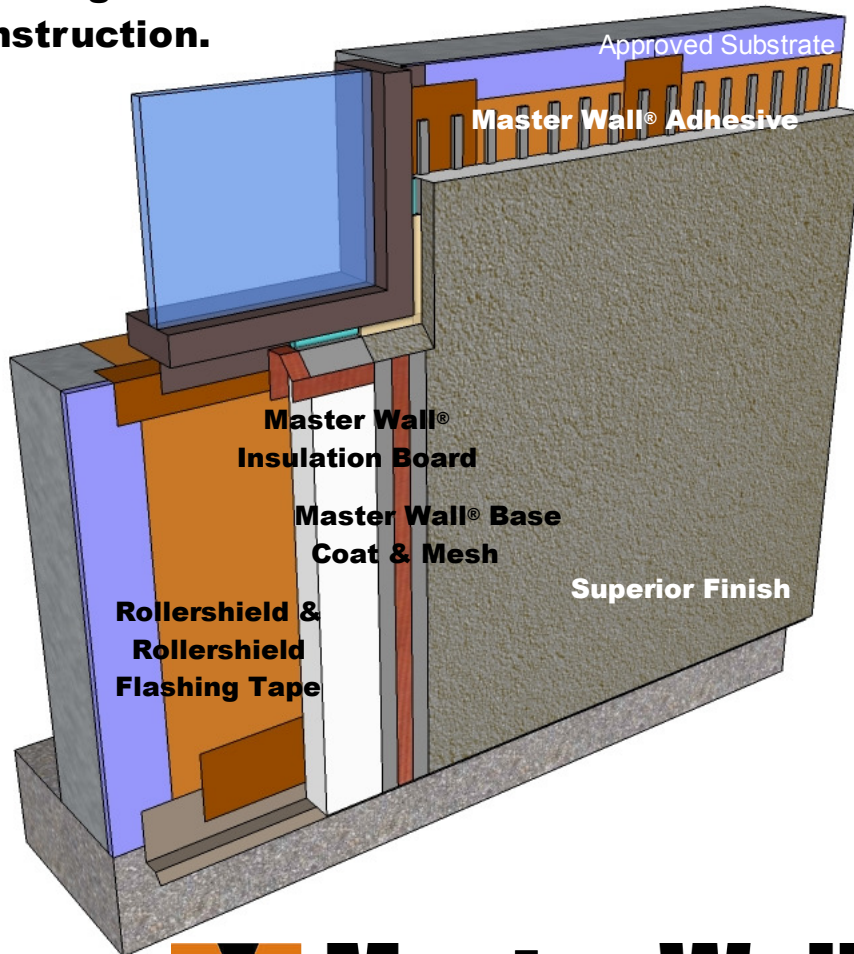
System Use

- Commercial
- Residential

Attachment Method

- Adhesive

Master Wall Inc.® Rollershield Drainage Class PB Exterior Insulation and Finish System is a high performance commercial wall cladding. It uses a roll-applied air and water barrier that can be used as a flashing-type material with excellent water holdout. Vertical adhesive channels drain away any incidental water entering the system. This highly adaptable cladding is suitable for both new and retrofit construction.



More Information



Rollershield Drainage System



Master Wall Inc.®
Building a Culture of Excellence

masterwall.com

PO Box 397 • Fortson • GA • 31808 • 800-755-0825 • Tech: 800-760-2861



Rollershield Drainage EIFS

Short Form Specification

1.0 General

This is a short form specification. Refer to Rollershield Drainage EIFS specifications and details for additional information.

1.1 System Description

The Master Wall® Rollershield Drainage Exterior Insulation and Finish System (EIFS) is a Class PB (Polymer Based) EIF System consisting of a roll-applied water barrier, vertical channel adhesive attachment, insulation board, reinforcing mesh and a textured finish.

1.2 Design Requirements:

- A. Reference Master Wall® suggested details and architectural drawings for specific detail requirements.
- B. Slope all surfaces a minimum of 1:2 (6" in 12") to shed water, maximum 12" (305mm) wide.
- C. Maximum deflection of substrates shall not exceed L/240.
- D. Typical acceptable substrates include unpainted brick, masonry, concrete, Portland cement plaster (stucco), exterior grade gypsum sheathing (ASTM C1396), Glass Fiber Sheathing (ASTM C1177), CDX exterior grade plywood, Exposure 1 Oriented Strand Board (OSB).
- E. Expansion joints are required in the cladding at building expansion joints, panel joints, floor lines in wood framed construction, and other areas where significant movement occurs.

1.3 Quality Assurance

- A. The Rollershield Drainage System shall be recognized by local building codes.
- B. The system shall meet or exceed ASTM C1397 and detailed in accordance with ASTM E2511.
- C. The system shall have been tested for fire performance in accordance with ASTM E108, ASTM E-84, NFPA 265, and NFPA 268.
- D. The system shall have been tested for drainage performance in accordance with ASTM E331.

1.4 Job Conditions

- A. Store all materials protected from weather and direct sunlight at temperatures above 40°F (5°C).
- B. The ambient and wall temperature shall be a minimum of 40°F (5°C) and shall remain so for at least 24 hours after installation.

2.0 Products

All components of the Rollershield Drainage System shall be manufactured by Master Wall® and supplied by an authorized distributor.

- A. Water Barrier & Flashing Tapes:
 - Rollershield: A 100% pure acrylic-based roll-applied weather-resistive barrier.
 - Trowelshield: A 100% pure acrylic-based trowel grade water-resistive barrier.
 - Rollershield Mesh Tape: A lightweight joint treatment material.
 - Rollershield Flashing Tape: A lightweight nonwoven joint treatment material.
- B. Master Wall Adhesives:
 1. Foam & Mesh Adhesive (F&M), F&M Plus: A 100% pure acrylic-based adhesive that is field mixed with Portland cement.
 2. Master Wall® Bagged Base (MBB), MBB Plus: A ready to use dry base that is field mixed with water.
 3. Guardian: A waterproof 100% pure acrylic-based fiber reinforced adhesive that is field mixed with Portland
- C. Master Wall Insulation Board: Molded Expanded Polystyrene insulation board manufactured to Master Wall® specifications.
- D. Aggre-flex Mesh: Available in Standard, Detail, Hi-Tech, Medium, Strong and Ultra.
- E. Master Wall Base Coats:
 1. Foam & Mesh Adhesive (F&M), F&M Plus.
 2. Master Wall® Bagged Base (MBB), MBB Plus.
 3. Guardian.
- F. Superior Finish: 100% pure acrylic formulation with integral color and texture. Perfect, Spray, Desert Sand, R-Coarse and Refinish textures.
- G. Specialty Finishes: Specialty finish blends of natural and man-made decorative specialty finishes and accents.
- H. Master Wall Coatings:
 1. Primecoat & Sanded Primecoat: A water-based primer.
 2. Roller-flex: A water-based architectural finish coating.

3.0 Installation

- A. Inspect the substrate to ensure that it is free of all foreign materials that would affect the adhesion of the Rollershield Drainage EIFS System.
- B. Apply the system in strict accordance with Master Wall® specifications, product data sheets, architectural drawings and architectural specifications.

We finish strong.

Information contained in this product data sheet conforms to the standard detail recommendations and specifications for the installation of Master Wall Inc.® products and is presented in good faith. Master Wall Inc.® assumes no liability, expressed or implied as to the architecture, engineering, or workmanship of any project. This information may be concurrent with, or superseded by other applicable documents, such as specifications and details. Contact Master Wall Inc.® for the most current product information. ©2014 Master Wall Inc.®

 **Master Wall Inc.®**
Building a Culture of Excellence
masterwall.com

PO Box 397 • Fortson • GA • 31808 • 800-755-0825 • Tech: 800-760-2861