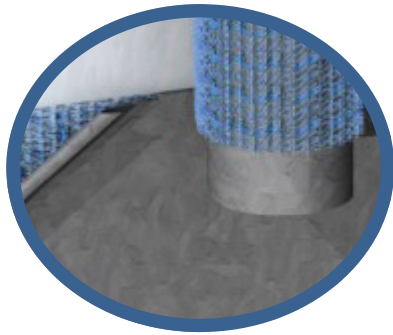


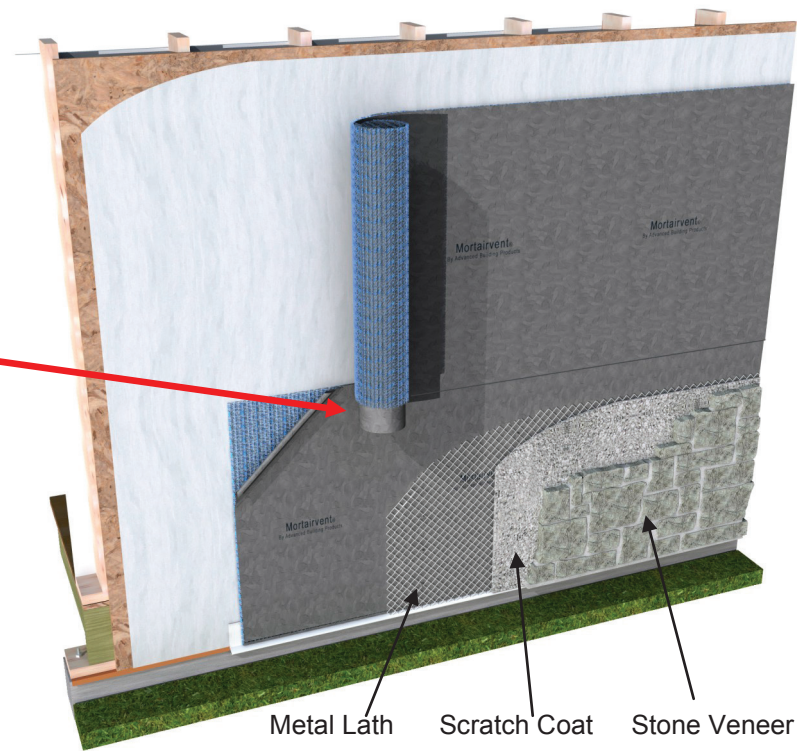


mortairvent®

Advanced Rainscreen Solutions



Butt (blue) polymer matrix together with fabric flap overlapping previous course.



INSTALLATION INSTRUCTIONS — STUCCO & MASONRY VENEER

- Apply a weather resistant barrier over sidewall sheathing. Note: some regions may require two layers of weather resistant barrier. Check local codes for more information.
- Install Mortairvent® after windows and doors have been properly installed and flashed. Starting at the base of the wall, unroll Mortairvent® from right to left with the fabric flap at the bottom, the three-dimensional (blue) polymer matrix against the weather resistant barrier, and the fabric side facing the exterior of building. Staple or nail every three square feet.
- On the first (bottom) course only, un-fold the fabric flap and tuck it between the (blue) polymer matrix and the weather resistant barrier to create an insect screen.
- On subsequent courses, butt the blue polymer material together without overlapping. Make sure to pull the fabric flap over the previous course (shingle style) and staple.
- On top course, invert the roll and unroll left to right with the fabric flap at the top. Unfold the fabric flap and tuck it between the (blue) matrix and the weather resistant barrier to create an insect screen.
- Apply lath, scratch coat, and stucco or masonry veneer siding over Mortairvent® using manufacturer's recommended fasteners and spacing.

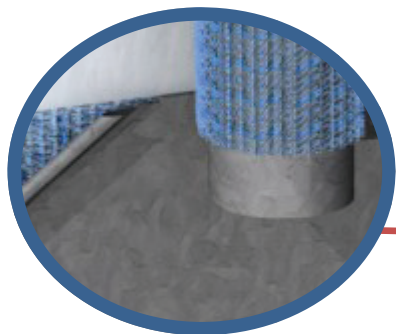


Advanced Building Products, Inc.

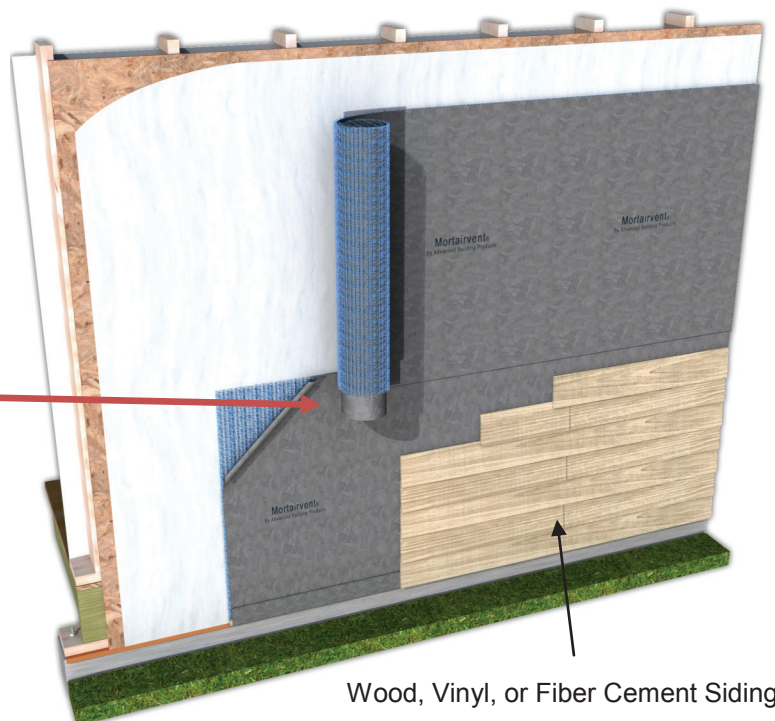
800-252-2306

www.mortairvent.com

Rainscreen Drainage Mat for Exterior Walls



Butt (blue) polymer matrix together with fabric flap overlapping previous course.



Wood, Vinyl, or Fiber Cement Siding

INSTALLATION INSTRUCTIONS — WOOD, VINYL, OR FIBER CEMENT SIDING

- Apply a weather resistant barrier over sidewall sheathing. Note: some regions may require two layers of weather resistant barrier. Check local codes for more information.
- Install Mortairvent® after windows and doors have been properly installed and flashed. Starting at the base of the wall, unroll Mortairvent® from right to left with the fabric flap at the bottom, the three-dimensional (blue) polymer matrix against the weather resistant barrier, and the fabric side facing the exterior of building. Staple or nail every three square feet.
- On the first (bottom) course only, un-fold the fabric flap and tuck it between the (blue) polymermatrix and the siding to create an insect screen.
- On subsequent courses, butt the blue polymer material together without overlapping. Make sure to pull the fabric flap over the previous course (shingle style) and staple
- On top course, invert the roll and unroll left to right with the fabric flap at the top. Unfold the fabric flap and tuck it between the (blue) matrix and the weather resistant barrier to create an insect screen.
- Install Mortairvent® under trim boards or butt up against the trim board edge using a thicker trim board or shim to account for thickness of the rainscreen material.
- Apply siding over Mortairvent® using manufacturer's recommended fasteners and spacing.