

Contactor® & Recharger®

Stormwater Chambers The Chamber with the Stripe®



Product Booklet

- Retention
- Detention
- Water Conveyance
- Water Quality



CULTEC Stormwater Product Booklet

Published by
CULTEC, Inc.
P.O. Box 280
878 Federal Road
Brookfield, Connecticut 06804 USA
www.cultec.com

Copyright Notice

© 2013 CULTEC, Inc. All rights reserved. Printed in the USA.

This document and any accompanying CULTEC products are copyrighted by CULTEC, Inc. Any reproduction and/or distribution without prior written consent from CULTEC, Inc. is strictly prohibited.

Disclaimers:

The drawings, photographs and illustrations shown in this document are for illustrative purposes only and are not necessarily to scale. Actual designs may vary.

CULTEC reserves the right to make design and/or specification changes at any time without notice at CULTEC's sole discretion.

CULTEC is not responsible for typographical errors.

Protected by one or more of the following patents:

U.S. Patent No. 5,419,838; 6,129,482; 6,322,288 B1; 7,226,241; Canadian Patent No. 2,252,286; 2,450,565; 2,591,255; 2,303,658; 2,743,193; European Patent No. EP1867794. European Design Nos. 001092191 (0001-0004). Other U.S. and/or Foreign patent(s)/patent(s) pending.

Trademark Notices:

CULTEC, the CULTEC logo, Contactor, HVLV, Landscaper Series, PAC, StormGenie, StormFilter, and The Chamber with the Stripe! are registered trademarks of CULTEC, Inc.

Chamber of Choice, EZ-24, Field Drain, No. 20L, No. 410, Separator, T-80, V8, 100, 150, 150XL, 180, 280, 330, and 330XL are all trademarks of CULTEC, Inc.

All other trademarks are property of their respective holders and are hereby acknowledged.

Contact Information:

For general information on our other products and services, please contact our offices within the United States at (800)428-5832, (203)775-4416 ext. 2002, or email us at custservice@cultec.com.

For technical support, please call (203)775-4416 ext. 2003 or email tech@cultec.com.

Doc ID: CULG016 11-13

November 2013

You are using version CULG016 11-13 of our CULTEC Stormwater Product Booklet.

Technical and Design Assistance

Free Design Assistance

CULTEC offers free design assistance including preliminary CAD drawings, details and calculations. Contact our Technical Department at 203-775-4416.

Free Design Tools

Systems may be sized using our own Stormwater Design Calculator and drawn in AutoCAD® using the CULTEC StormGenie™ Automated Drawing Program. These design tools are available for download on our website at www.cultec.com.

Software Partners

Our products are modeled in:

- HydroCAD®
- Streamline Technologies' ICPR®
- Bentley Systems' PondPack® V8i
- Autodesk® Storm & Sanitary Analysis (SSA)

CULTEC offers a variety of other stormwater and septic products. Contact us for additional literature and information or visit our website at www.cultec.com.

CULTEC has the solutions!



Drywell Applications



Residential Drainage



Commercial Drainage



Rainwater Harvesting

Product Information

CULTEC Stormwater Systems 101 - The Basics

The CULTEC Contactor® and Recharger® chambers replace conventional stormwater retention/detention systems such as ponds, swales, pipe and stone trenches or beds, or concrete structures. The chambers may be used for drywells. Infiltration contact area is maximized by the fully open bottoms and perforated sidewalls.

Water is collected in a catch basin or other collective device followed by a CULTEC StormFilter® to be treated. The water is then directed into the Contactor® or Recharger® chambers and distributed via the side portal internal manifold.

Typical CULTEC stormwater systems are designed by using the largest chamber that meets the site's depth constraint and system requirements. By choosing the largest available chamber that meets the system's parameters, you reduce the number of chambers and land area required. The client is able to maximize storage volume at the given workable elevations.

Applications

- Retention Systems
- Detention Systems
- Reclamation
- Drywells
- Conveyance
- Manage residential roofdrain run-off
- Contain swimming pool or water conditioner backwash

Features

- Patented overlapping rib connection
- Unique in-line manifold available on most models
- Repeating support panel adds to strength of installation
- High infiltrative capability
- Lightweight
- Variety of sizes
- Chemically resistant
- Manufactured in ISO certified facilities

System Benefits

- Maximum use of land area
- Store larger volumes in a lower profile than comparably sized pipe
- Ability to recharge water on-site
- Single or multi-level systems
- Less heavy equipment required
- The units nest on pallets for convenient shipping and stockpiling of material
- Allows for greater infiltration into the ground
- Permits further development
- Reduces insurance liabilities and potential breeding grounds for infectious mosquitoes associated with open ponds
- Free design assistance available










Typical CULTEC Stormwater System Components

1. CULTEC Stormwater Chamber - used for retention, detention, reclamation
2. CULTEC PAC® 150 - chamber with bottom used for water conveyance
3. CULTEC HVLV® Feed Connector - internal manifold component
4. CULTEC StormFilter® 330 - Water Quality Unit
5. CULTEC No. 410™ Filter Fabric - prevents soil intrusion into system
6. CULTEC No. 20L™ Polyethylene Liner - placed under CULTEC manifold components, prevents scouring
7. CULTEC Warning Tape - Marks off location of underground CULTEC Stormwater System during construction to prevent vehicular traffic.
8. Multicade™ Pylon - Marks location of underground CULTEC Stormwater System during construction phase.



Technical Information

CULTEC Contactor® & Recharger® Chamber Specification Information

	Contactor® 100HD	Recharger® 150XLHD	Recharger® 280HD	Recharger® 330XLHD	Recharger® V8HD ¹
Length	8'	11'	8'	8.5'	8'
	2.44 m	3.35 m	2.44 m	2.59 m	2.44 m
Installed Length	7.5'	10.25'	7'	7'	7.5'
	2.29 m	3.12 m	2.13 m	2.13 m	2.29 m
Width	36"	33"	47"	52"	60"
	914 mm	838 mm	1194 mm	1321 mm	1524 mm
Height	12.5"	18.5"	26.5"	30.5"	32"
	318 mm	470 mm	673 mm	775 mm	813 mm
Bare Chamber Storage Capacity	14.00 ft ³	27.16 ft ³	42.55 ft ³	52.21 ft ³	65.09 ft ³
	0.40 m ³	0.77 m ³	1.21 m ³	1.48 m ³	1.84 m ³
Min. Storage Capacity Surrounded in Stone	28.81 ft ³	50.17 ft ³	64.46 ft ³	79.26 ft ³	99.56 ft ³
	0.82 m ³	1.42 m ³	1.83 m ³	2.24 m ³	2.82 m ³
Scan for Product Downloads and CAD details					

Based on installed length. Stone void is calculated at 40%. Includes 6" (152 mm) stone base, 6" (152 mm) stone above chamber crown and stone around units based on typical minimum center to center spacing.

¹ The Recharger V8HD information is based on the V8IHD Intermediate. See pages 12-13 for information on the V8SHD Starter and V8EHD End units.

Other CULTEC models are available if the above chambers do not meet your design parameters. Please contact our Technical Department for more information.



Shown L->R- Contactor 100HD, Recharger 150XLHD, Recharger 280HD, Recharger 330XLHD, and Recharger V8HD.

Design Information



Minimum Fill Requirements

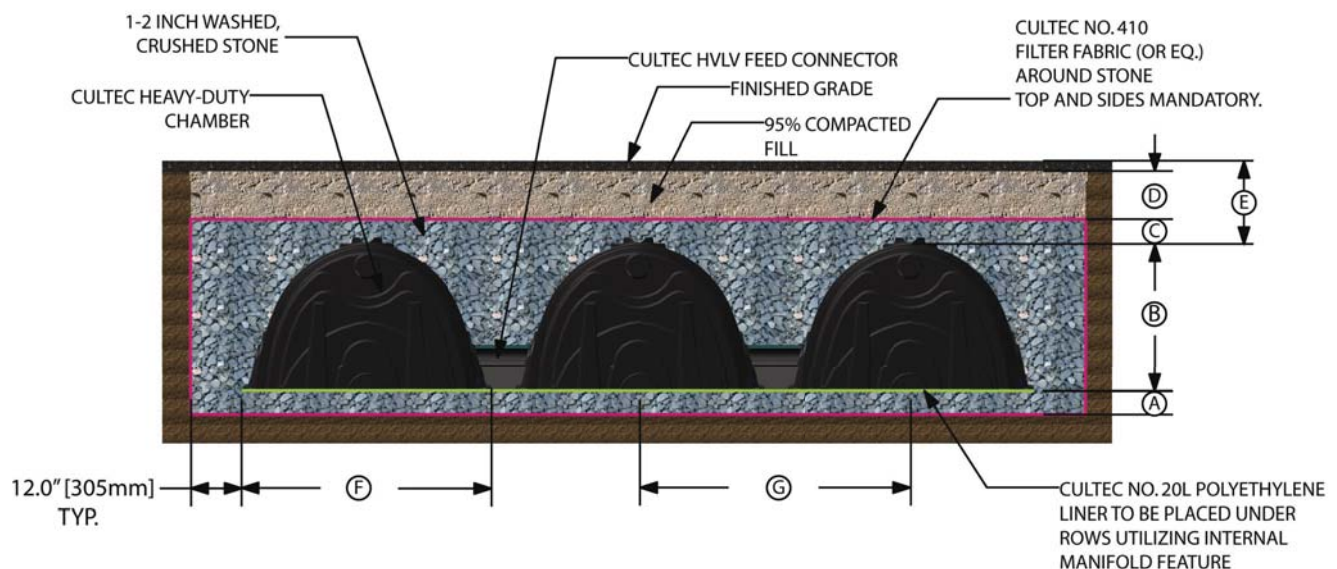
These requirements are for paved traffic applications only. If these models and design parameters do not meet your needs, please call CULTEC's Technical Department at 1-800-4-CULTEC, Ext. 2003 (1-800-428-5832, Ext. 2003) for further information and assistance.

Refer to CULTEC's most current installation instructions for further details including but not limited to acceptable fill materials and vehicle loads.

Table 1

	See Fig. 1	Contacto [®] 100HD	Recharger [®] 150XLHD	Recharger [®] 280HD	Recharger [®] 330XLHD	Recharger [®] V8HD
Typical Center to Center Spacing	G	3.33'	3.25'	4.33'	4.83'	5.5'
		1.02 m	0.99 m	1.32 m	1.47 m	1.68 m
Chamber width	F	36"	33"	47"	52"	60"
		914 mm	838 mm	1194 mm	1321 mm	1524 mm
Max. depth of cover allowed above crown of chamber	E	12'	12'	12'	12'	8'
		3.66 m	3.66 m	3.66 m	3.66 m	2.44 m
Min. depth required of 95% Compacted Fill for Paved Traffic Application	D	8"	8"	8"	10"	12"
		203 mm	203 mm	203 mm	254 mm	305 mm
Min. depth of stone required above units for traffic applications	C	6"	6"	6"	6"	6"
		152 mm	152 mm	152 mm	152 mm	152 mm
Chamber height	B	12.5"	18.5"	26.5"	30.5"	32"
		318 mm	470 mm	673 mm	775 mm	813 mm
Min. depth of stone base	A	6"	6"	6"	6"	6"
		152 mm	152 mm	152 mm	152 mm	152 mm

Fig. 1



Technical Information

CULTEC Contactor® 100HD

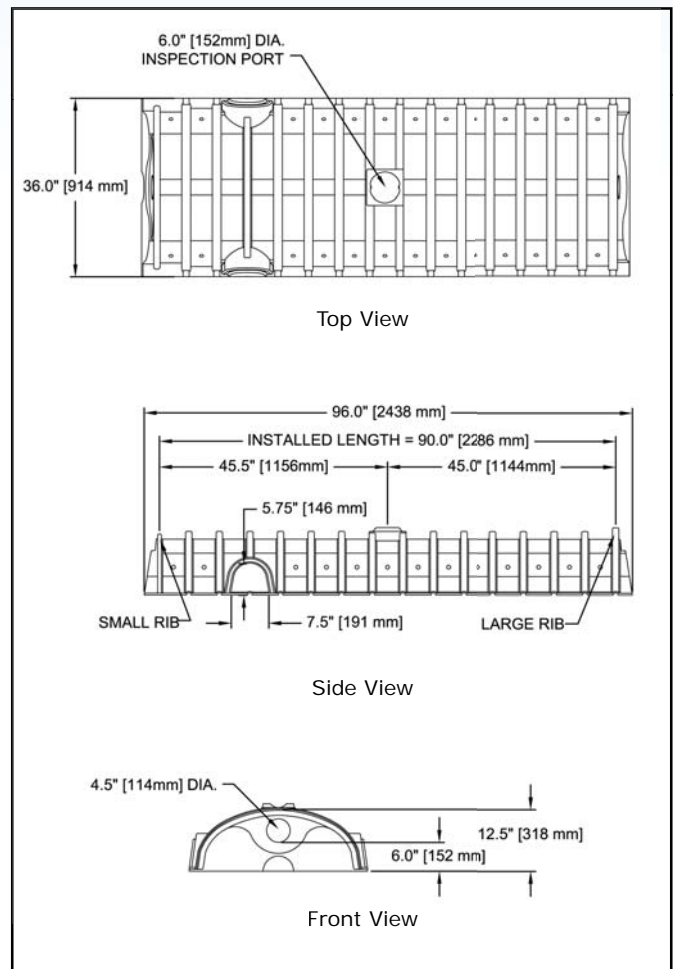
The Contactor® 100HD is a 12.5" (318 mm) tall, low profile chamber and is typically used for installations with depth restrictions or when a larger infiltrative area is required. The Contactor 100HD has the side portal internal manifold feature. The HVLV® SFCx2 Feed Connector is inserted into the side portal of the Contactor 100HD to create the internal manifold.



Size (L x W x H)	8' x 36" x 12.5" 2.44 m x 914 mm x 318 mm
Installed Length	7.5' 2.29 m
Length Adjustment per Run	0.5' 0.15 m
Chamber Storage	1.87 ft³/ft 0.17 m³/m 14.00 ft³/unit 0.40 m³/unit
Min. Installed Storage	3.84 ft³/ft 0.36 m³/m 28.81 ft³/unit 0.82 m³/unit
Min. Area Required	25 ft² 2.32 m²
Min. Center to Center Spacing	3.33' 1.02 m
Max. Allowable Cover	12' 3.66 m
Max. Inlet Opening in Endwall	10" 250 mm
Side Portal I.D. Dimensions (W x H)	7.5" x 5.75" 191 mm x 146 mm
Max. Allowable O.D. in Side Portal	6.9" 175 mm
Compatible Feed Connector	HVLV SFCx2 Feed Connector

	Stone Foundation Depth		
	6" 152 mm	12" 305 mm	18" 457 mm
Chamber and Stone Storage Per Chamber	28.81 ft³ 0.82 m³	33.81 ft³ 0.96 m³	38.81 ft³ 1.10 m³
Min. Effective Depth	2.04' 0.62 m	2.54' 0.77 m	3.04' 0.93 m
Stone Required Per Chamber	1.37 yd³ 1.05 m³	1.84 yd³ 1.40 m³	2.30 yd³ 1.76 m³

Calculations are based on installed chamber length.
Includes 6" (152 mm) stone above crown of chamber and typical stone surround.
Stone void calculated at 40%.



Technical Information

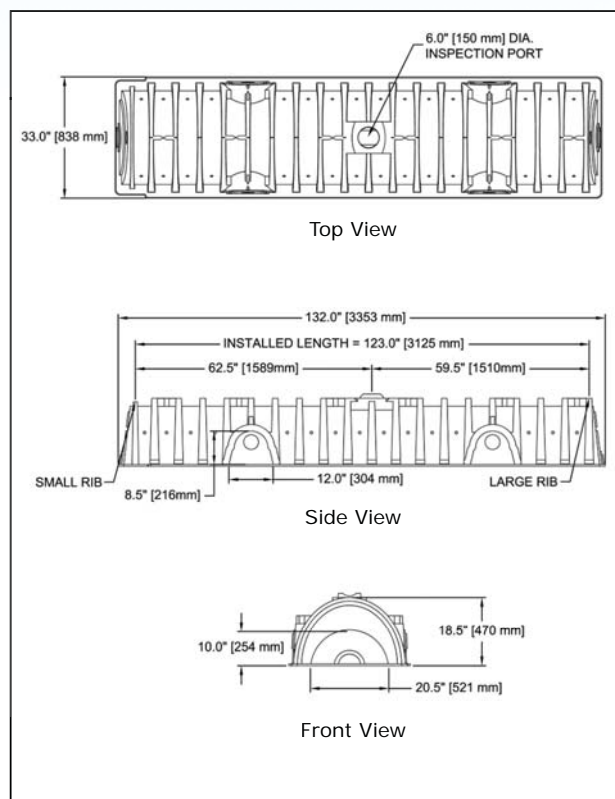


CULTEC Recharger® 150XLHD

The Recharger® 150XLHD is a 18.5" (470 mm) tall, lower profile chamber and is typically used for installations with depth restrictions or when a larger infiltrative area is required. The Recharger® 150XLHD has the side portal internal manifold feature. HVLV® FC-24 Feed Connectors are inserted into the side portals to create the internal manifold.



Size (L x W x H)	11' x 33" x 18.5"
	3.35 m x 838 mm x 470 mm
Installed Length	10.25'
	3.12 m
Length Adjustment per Run	0.75'
	0.23 m
Chamber Storage	2.65 ft ³ /ft
	0.25 m ³ /m
	27.16 ft ³ /unit
	0.77 m ³ /unit
Min. Installed Storage	4.89 ft ³ /ft
	0.45 m ³ /m
	50.17 ft ³ /unit
	1.42 m ³ /unit
Min. Area Required	33.31 ft ²
	3.09 m ²
Min. Center to Center Spacing	3.25'
	0.99 m
Max. Allowable Cover	12'
	3.66 m
Max. Inlet Opening in Endwall	12"
	300 mm
Side Portal I.D. Dimensions (W x H)	12" x 8.5"
	304 mm x 216 mm
Max. Allowable O.D. in Side Portal	10.25"
	260 mm
Compatible Feed Connector	HVLV FC-24 Feed Connector



	Stone Foundation Depth		
	6"	12"	18"
	152 mm	305 mm	457 mm
Chamber and Stone Storage Per Chamber	50.17 ft ³	56.83 ft ³	63.49 ft ³
	1.42 m ³	1.61 m ³	1.80 m ³
Min. Effective Depth	2.54'	3.04'	3.54'
	0.77 m	0.93 m	1.08 m
Stone Required Per Chamber	2.13 yd ³	2.75 yd ³	3.36 yd ³
	1.63 m ³	2.10 m ³	2.57 m ³

Calculations are based on installed chamber length.
Includes 6" (152 mm) stone above crown of chamber and typical stone surround.
Stone void calculated at 40%.

Technical Information

CULTEC Recharger® 280HD

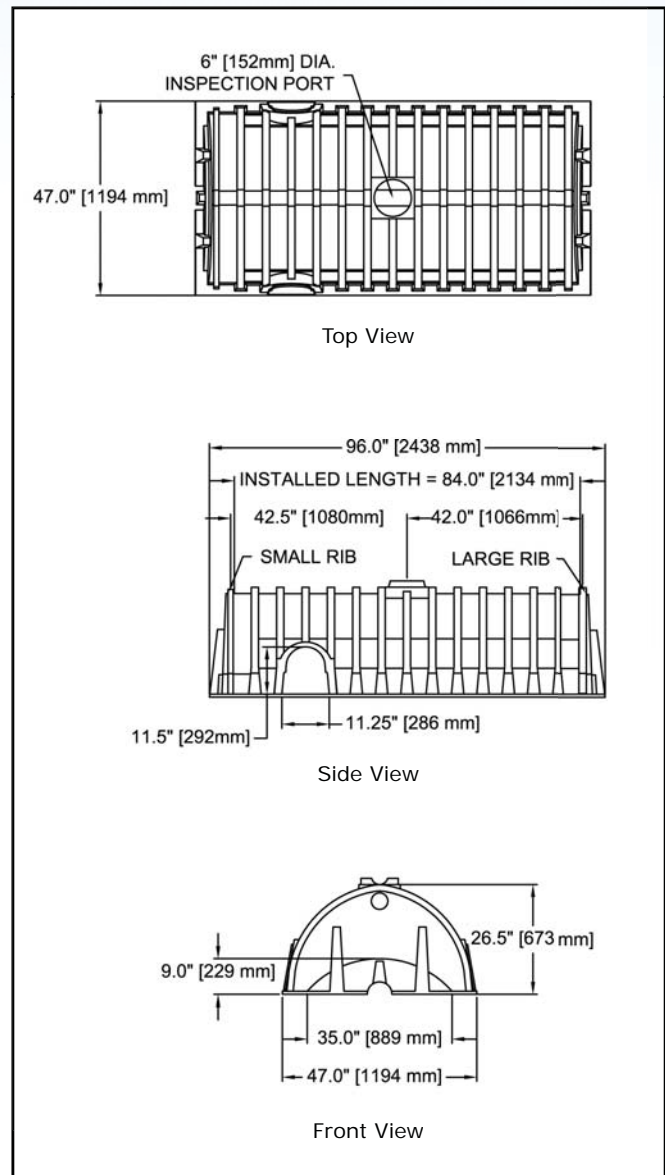
The Recharger® 280HD is a 26.5" (673 mm) tall, mid-size chamber and is typically used for installations with depth restrictions or when a larger infiltrative area is required. The Recharger® 280HD has the side portal internal manifold feature. HVLV® FC-24 Feed Connectors are inserted into the side portals to create the internal manifold.



Size (L x W x H)	8' x 47" x 26.5" 2.44 m x 1194 mm x 673 mm
Installed Length	7' 2.13 m
Length Adjustment per Run	1' 0.30 m
Chamber Storage	6.08 ft³/ft 0.56 m³/m 42.55 ft³/unit 1.21 m³/unit
Min. Installed Storage	9.21 ft³/ft 0.86 m³/m 64.46 ft³/unit 1.83 m³/unit
Min. Area Required	30.33 ft² 2.82 m²
Min. Center to Center Spacing	4.33' 1.32 m
Max. Allowable Cover	12' 3.66 m
Max. Inlet Opening in Endwall	18" 450 mm
Side Portal I.D. Dimensions (W x H)	11.25" x 11.5" 286 mm x 292 mm
Max. Allowable O.D. in Side Portal	12.25" 311 mm
Compatible Feed Connector	HVLV FC-24 Feed Connector

	Stone Foundation Depth		
	6" 152 mm	12" 305 mm	18" 457 mm
Chamber and Stone Storage Per Chamber	64.46 ft³ 1.83 m³	70.53 ft³ 2.00 m³	76.59 ft³ 2.17 m³
Min. Effective Depth	3.21' 0.98 m	3.71' 1.13 m	4.21' 1.28 m
Stone Required Per Chamber	2.03 yd³ 1.55 m³	2.59 yd³ 1.98 m³	3.15 yd³ 2.41 m³

Calculations are based on installed chamber length.
Includes 6" (152 mm) stone above crown of chamber and typical stone surround.
Stone void calculated at 40%.



Technical Information



CULTEC Recharger® 330XLHD

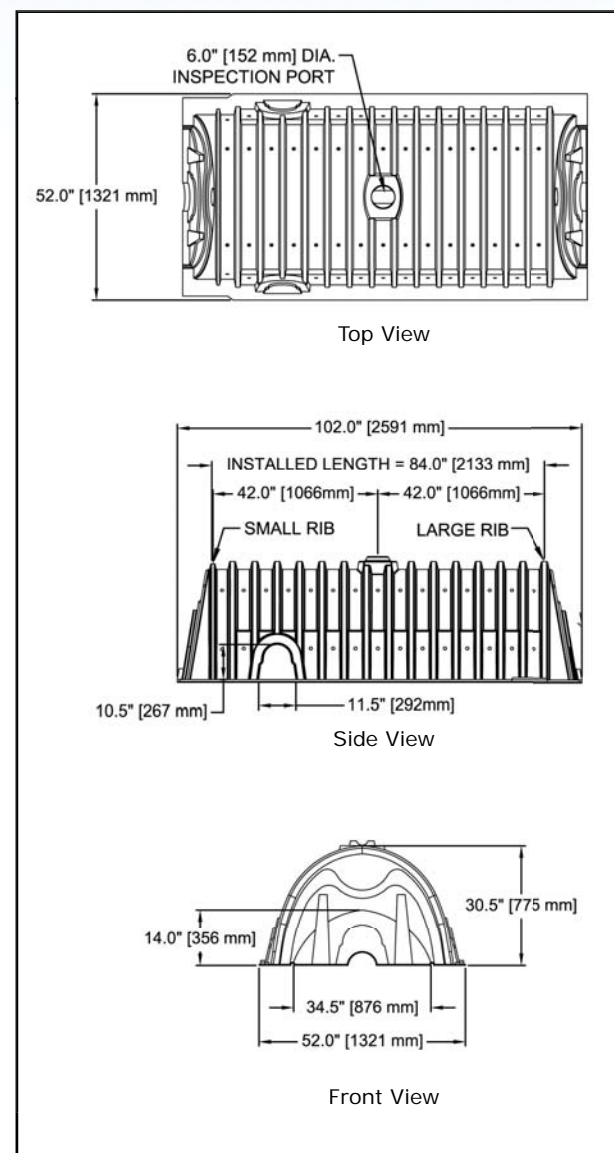
The Recharger® 330XLHD is a 30.5" (775 mm) tall, high capacity chamber. Typically when using this model, fewer chambers are required resulting in less labor and a smaller installation area. The Recharger® 330XLHD has the side portal internal manifold feature. HVLV® FC-24 Feed Connectors are inserted into the side portals to create the internal manifold.



Size (L x W x H)	8.5' x 52" x 30.5" 2.59 m x 1321 mm x 775 mm
Installed Length	7' 2.13 m
Length Adjustment per Run	1.50' 0.46 m
Chamber Storage	7.46 ft³/ft 0.69 m³/m 52.21 ft³/unit 1.48 m³/unit
Min. Installed Storage	11.32 ft³/ft 1.05 m³/m 79.26 ft³/unit 2.24 m³/unit
Min. Area Required	33.83 ft² 3.14 m²
Min. Center to Center Spacing	4.83' 1.47 m
Max. Allowable Cover	12' 3.66 m
Max. Inlet Opening in Endwall	24" 600 mm
Side Portal I.D. Dimensions (W x H)	11.5 x 10.5" 292 mm x 267 mm
Max. Allowable O.D. in Side Portal	11.75" 298 mm
Compatible Feed Connector	HVLV FC-24 Feed Connector

	Stone Foundation Depth		
	6" 152 mm	12" 305 mm	18" 457 mm
Chamber and Stone Storage Per Chamber	79.26 ft³ 2.24 m³	86.03 ft³ 2.44 m³	92.79 ft³ 2.63 m³
Min. Effective Depth	3.54' 1.08 m	4.04' 1.23 m	4.54' 1.38 m
Stone Required Per Chamber	2.50 yd³ 1.91 m³	3.13 yd³ 2.39 m³	3.76 yd³ 2.87 m³

Calculations are based on installed chamber length.
Includes 6" (152 mm) stone above crown of chamber and typical stone surround.
Stone void calculated at 40%.



Technical Information

CULTEC Recharger® V8HD

The Recharger® V8HD is a 32" (813 mm) tall, high capacity chamber. The Recharger® V8HD has the side portal internal manifold feature. HVLV® Feed Connectors are inserted into the side portals to create the internal manifold.

The Recharger V8SHD Starter and V8EHD End sections are **shorter** in length than the Recharger V8IHD Intermediate section. These differences must be considered during product specification, calculation and design.



Recharger V8SHD Starter



Recharger V8IHD Intermediate



Recharger V8EHD End

	Recharger V8SHD Starter or V8EHD End Section	Recharger V8IHD Intermediate Section
Size (L x W x H)	5.08' x 60" x 32"	8' x 60" x 32"
	1.55 m x 1524 mm x 813 mm	2.44 m x 1524 mm x 813 mm
Installed Length	4.58'	7.5'
	1.40 m	2.29 m
Length Adjustment per Run	-5.83'	-5.83'
	-1.78 m	-1.78 m
Chamber Storage	8.68 ft³/ft	8.68 ft³/ft
	0.81 m³/m	0.81 m³/m
	39.78 ft³/unit	65.09 ft³/unit
	1.13 m³/unit	1.84 m³/unit
Min. Installed Storage	13.27 ft³/ft	13.27 ft³/ft
	1.23 m³/m	1.23 m³/m
	60.84 ft³/unit	99.56 ft³/unit
	1.72 m³/unit	2.82 m³/unit
Min. Area Required	25.21 ft²	41.25 ft²
	2.34 m²	3.83 m²
Min. Center to Center Spacing	5.5'	5.5'
	1.68 m	1.68 m
Max. Allowable Cover	8'	8'
	2.44 m	2.44 m
Max. Inlet Opening in Endwall	24"	n/a
	600 mm	n/a
Side Portal I.D. Dimensions (W x H)	18.5" x 15"	12.5" x 9.25"
	470 mm x 381 mm	318 mm x 235 mm
Max. Allowable O.D. in Side Portal	15.3"	12.25"
	387 mm	311 mm
Compatible Feed Connector	HVLV F-110x4 Feed Connector	HVLV FC-24 Feed Connector

Recharger V8SHD Starter or V8EHD End	Stone Foundation Depth			Recharger V8IHD Intermediate	Stone Foundation Depth		
	6" 152 mm	12" 305 mm	18" 457 mm		6" 152 mm	12" 305 mm	18" 457 mm
Chamber and Stone Storage Per Chamber	60.84 ft³	65.88 ft³	70.92 ft³	Chamber and Stone Storage Per Chamber	99.56 ft³	107.81 ft³	116.06 ft³
	1.72 m³	1.87 m³	2.01 m³		2.82 m³	3.05 m³	3.29 m³
Min. Effective Depth	3.67'	4.17'	4.67'	Min. Effective Depth	3.67'	4.17'	4.67'
	1.12 m	1.27 m	1.42 m		1.12 m	1.27 m	1.42 m
Stone Required Per Chamber	1.95 yd³	2.42 yd³	2.88 yd³	Stone Required Per Chamber	3.19 yd³	3.95 yd³	4.72 yd³
	1.49 m³	1.85 m³	2.20 m³		2.44 m³	3.02 m³	3.61 m³

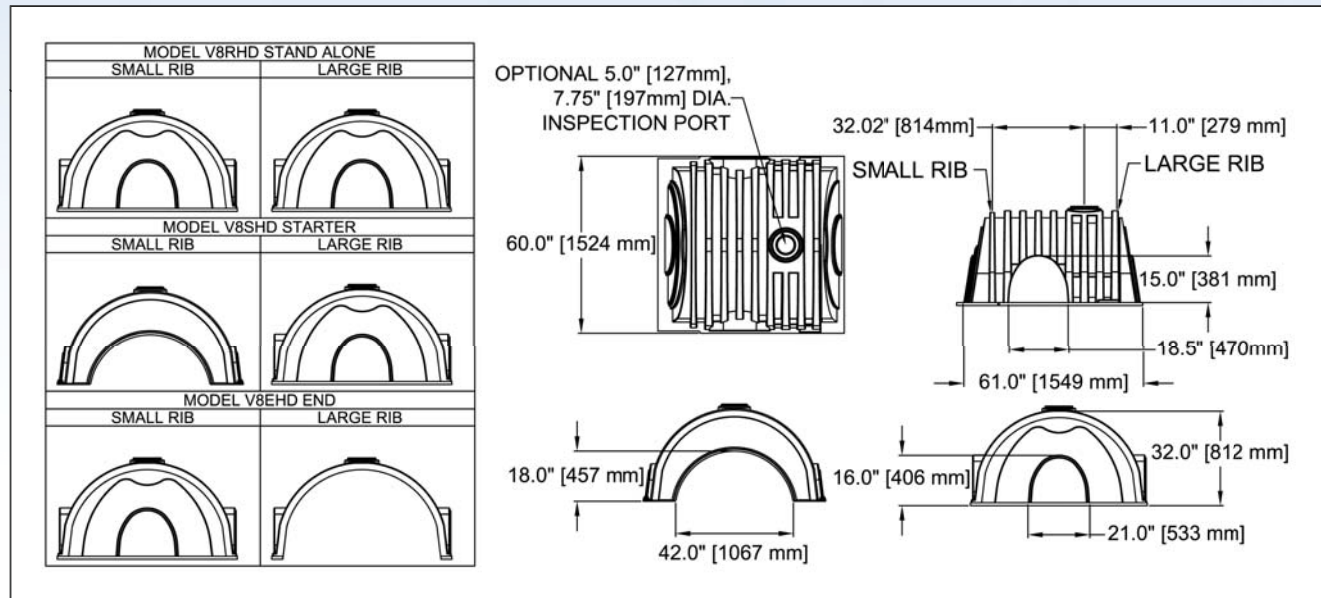
Includes 6" (152 mm) stone above crown of chamber and typical stone surround. Stone void calculated at 40%.

Technical Information

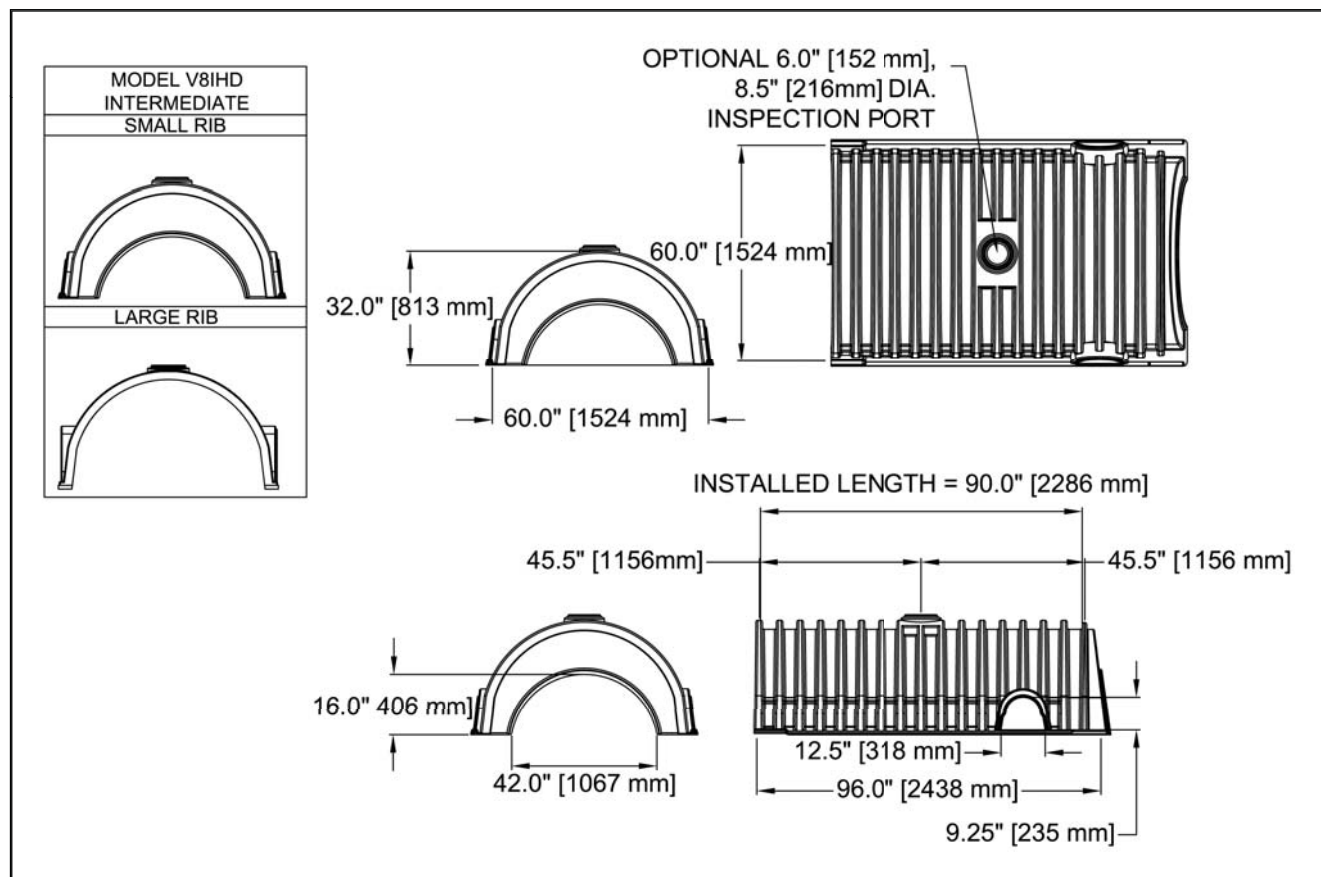


CULTEC Recharger® V8HD

Recharger V8SHD Starter and V8EHD End Three View Drawing



Recharger V8IHD Intermediate Three View Drawing



Technical Information

CULTEC HVLV® 180BT LS Landscaper Series® For Non-Traffic Applications Only

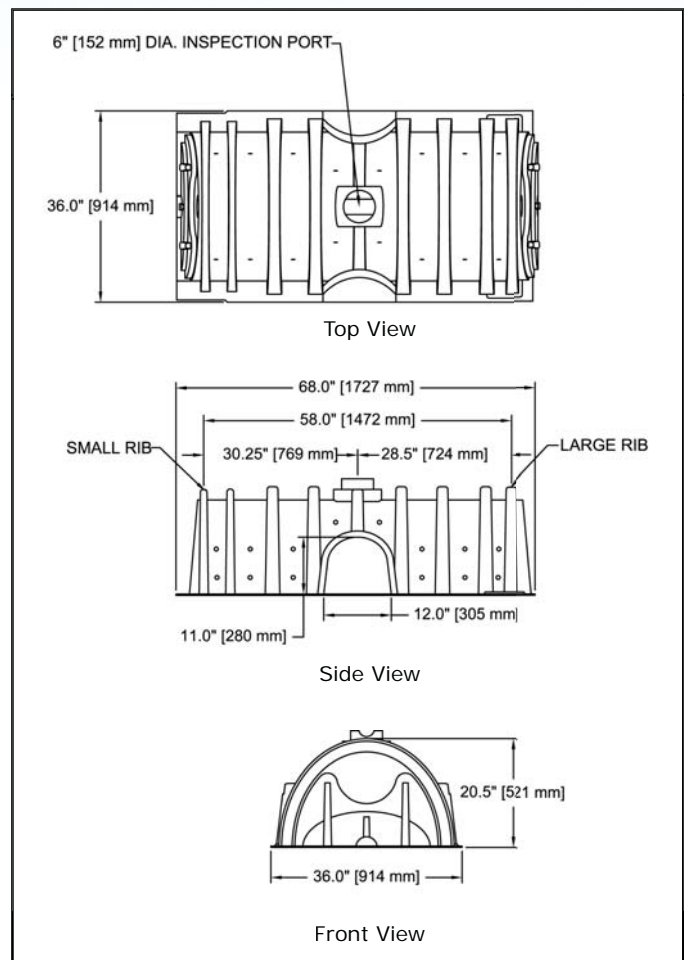
The HVLV® 180BT LS is a 20.5" (521 mm) tall, mid-size capacity chamber. CULTEC's Landscaper Series™ chambers are used in residential applications to control rainwater collected from gutters and/or catch basins. The chambers collect and store the stormwater underground until the soil is able to accept it back into the ground. Puddles and saturated soil are eliminated as water is diverted into the chamber and recharged into the ground. CULTEC chambers are lightweight and easily transported by hand, making them ideal to install in tight areas or where minimal site disturbance is desired. Used as stand alone units.



Size (L x W x H)	5.67' x 36" x 20.5" 1.73 m x 914 mm x 521 mm
Chamber Storage	146 gal. 553 L 19.53 ft³/unit 0.55 m³/unit
Min. Installed Storage	224 gal 848 L 29.94 ft³/unit 0.85 m³/unit
Min. Area Required	26.67 ft² 2.48 m²
Max. Allowable Cover	4' 1.22 m
Max. Inlet Opening in Endwall	15" 381 mm
Side Portal I.D. Dimensions (W x H)	12" x 11" 305 mm x 279 mm
Max. Allowable O.D. in Side Portal	5.75" 146 mm

Chamber and Stone Storage Per Chamber	29.94ft³ 0.85 m³
Min. Effective Depth	1.71' 0.52 m
Stone Required Per Chamber	0.96 yd³ 0.74 m³

Calculations are based on 4' (1.22 m) wide x 6.63' (2.02 m) long trench.
No stone above or below chamber and typical 6" (152 mm) stone surround.
Stone void calculated at 40%.

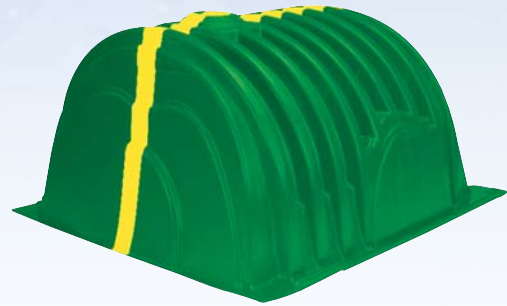


Technical Information



CULTEC Recharger® V8R LS Landscaper Series® For Non-Traffic Applications Only

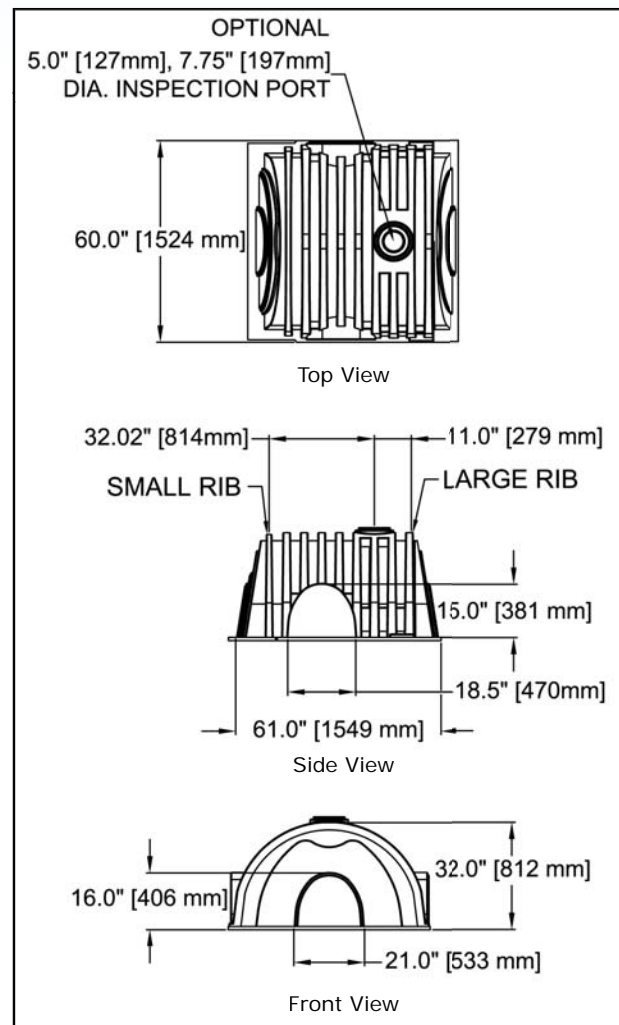
The Recharger® V8R LS is a 32" (813 mm) tall, high capacity chamber. CULTEC's Landscaper Series™ chambers are used in residential applications to control rainwater collected from gutters and/or catch basins. The chambers collect and store the stormwater underground until the soil is able to accept it back into the ground. Puddles and saturated soil are eliminated as water is diverted into the chamber and recharged into the ground. CULTEC chambers are lightweight and easily transported by hand, making them ideal to install in tight areas or where minimal site disturbance is desired. Used as stand alone units.



Size (L x W x H)	5.08' x 60" x 32"
	1.55 m x 1524 mm x 813 mm
Chamber Storage	330 gal.
	1249 L
	44.12 ft ³ /unit
	1.25 m ³ /unit
Min. Installed Storage	489 gal
	1852 L
	65.40 ft ³ /unit
	1.85 m ³ /unit
Min. Area Required	36.50 ft ²
	3.39 m ²
Max. Allowable Cover	4'
	1.22 m
Max. Inlet Opening in Endwall	24"
	600 mm
Side Portal I.D. Dimensions (W x H)	18.5" x 15"
	470 mm x 381 mm
Max. Allowable O.D. in Side Portal	15.3"
	387 mm

Chamber and Stone Storage Per Chamber	65.40 ft ³
	1.85 m ³
Min. Effective Depth	2.67'
	0.81 m
Stone Required Per Chamber	1.97 yd ³
	1.51 m ³

Calculations are based on 6' (1.83 m) wide x 6.08' (1.85 m) long trench.
No stone above or below chamber and typical 6" (152 mm) stone surround.
Stone void calculated at 40%.



Technical Information

Manifold Options for CULTEC Chambers

	Contactor® 100HD	Recharger® 150XLHD	Recharger® 280HD	Recharger® 330XLHD	Recharger® V8HD
Preferred Method	In-line internal manifold using Side Portals and Feed Connector	In-line internal manifold using Side Portals and Feed Connector	In-line internal manifold using Side Portals and Feed Connector	In-line internal manifold using Side Portals and Feed Connector	In-line internal manifold using Side Portals and Feed Connector
Feed Connector to Specify	HVLV® SFCx2 Feed Connector	HVLV® FC-24 Feed Connector	HVLV® FC-24 Feed Connector	HVLV® FC-24 Feed Connector	HVLV® FC-24 (for V8RHD, V8SHD and V8EHD) HVLV® F-110x4 Feed Connector (for V8IHD)
Option #2	n/a	n/a	External CULTEC HVLV® 180 Header System	External CULTEC HVLV® 180 Header System	External CULTEC HVLV® 180 Header System
Option #3	Pipe Max. Allowable Pipe Size in Endwall = 10" (250 mm) Max. Allowable O.D. Pipe Size in Side Portal = 6.9" (175 mm)	Pipe Max. Allowable Pipe Size in Endwall = 12" (300 mm) Max. Allowable O.D. Pipe Size in Side Portal = 10.25" (260 mm)	Pipe Max. Allowable Pipe Size in Endwall = 18" (450 mm) Max. Allowable O.D. Pipe Size in Side Portal = 12.25" (311 mm)	Pipe Max. Allowable Pipe Size in Endwall = 24" (600 mm) Max. Allowable O.D. Pipe Size in Side Portal = 11.75" (298 mm)	Pipe Max. Allowable Pipe Size in Endwall = 24" (600 mm) Max. Allowable O.D. Pipe Size in V8SHD Starter and V8EHD End Side Portal = 15.3" (387 mm) Max. Allowable O.D. Pipe Size in V8IHD Intermediate Side Portal = 12.25" (311 mm)



Preferred Method - Internal manifold using side portals and CULTEC feed connector



Option #2 - External manifold using CULTEC HVLV® 180 Header System






Option #3 - External conventional pipe and fitting manifold

Technical Information



CULTEC HVLV® Feed Connector Specification Information

	HVLV® SFCx2 Feed Connector	HVLV® FC-24 Feed Connector	HVLV® F-110x4 Feed Connector
Length	19.7" 500 mm	24.2" 614 mm	39" 991 mm
Installed Length (<i>exposed</i>)	For Contactor 100HD: 4" (102 mm) typ.	For Recharger 150XLHD: 6" (152 mm) typ. For Recharger 280HD: 5" (127 mm) typ. For Recharger 330XLHD: 6" (152 mm) typ. For Recharger V8IHD: 6" (152 mm) typ.	For Recharger V8RHD Stand Alone, Recharger V8SHD Starter, and V8EHD End: 6" (152 mm) typ.
Width	12" 305 mm	16" 406 mm	27.5" 699 mm
Height	7.6" 194 mm	12" 305 mm	18" 457 mm
Bare Chamber Storage Capacity	0.29 ft³/ft 0.03 m³/m	0.91 ft³/ft 0.08 m³/m	1.97 ft³/ft 0.18 m³/m
Compatible With	Contactor 100HD	Recharger 150XLHD, Recharger 280HD, Recharger 330XLHD, and Recharger V8IHD Intermediate	Recharger V8RHD Stand Alone, V8SHD Starter, and V8EHD End
Scan for Product Downloads and CAD details			



Shown L->R- HVLV SFCx2 Feed Connector, HVLV FC-24 Feed Connector, and HVLV F-110x4 Feed Connector.

For more information, contact CULTEC at (203) 775-4416 or visit www.cultec.com.

Technical Information

CULTEC HVLV® SFCx2 Feed Connector

HVLV® SFCx2 Feed Connectors may be used to create an internal manifold by inserting them into the side portals of the CULTEC stormwater chamber. The HVLV® SFCx2 Feed Connector may be used with the Contactor® 100HD chambers. They have a larger flow capacity than 6" (150 mm) diameter pipe.



Size (L x W x H)	19.7" x 12" x 7.6" 500 mm x 305 mm x 194 mm
Installed Length (exposed)	For Contactor 100HD: 4" (102 mm) typ.
Chamber Storage	0.29 ft³/ft 0.03 m³/m
Compatible Models	Contactor 100HD



Shown: CULTEC HVLV SFCx2 Feed Connector inserted into side portals of CULTEC chamber.

CULTEC HVLV® FC-24 Feed Connector

HVLV® FC-24 Feed Connectors may be used to create an internal manifold by inserting them into the side portals of the CULTEC stormwater chamber. The HVLV® FC-24 Feed Connector may be used with Recharger® 150XLHD, 280HD, 330XLHD and V8IHD chambers. They have a larger flow capacity than 12" (300 mm) diameter pipe.



Size (L x W x H)	24.2" x 16" x 12" 614 mm x 406 mm x 305 mm
Installed Length (exposed)	For Recharger 150XLHD: 6" (152 mm) typ. For Recharger 280HD: 5" (127 mm) typ. For Recharger 330XLHD: 6" (152 mm) typ. For Recharger V8IHD: 6" (152 mm) typ.
Chamber Storage	0.91 ft³/ft 0.08 m³/m
Compatible Models	Recharger 150XLHD, Recharger 280HD, Recharger 330XLHD, and Recharger V8IHD Intermediate

When installing the Recharger V8HD series, the HVLV FC-24 Feed Connectors are only used on the V8IHD Intermediate chambers. When the manifold is to be located at the ends of the system you must use the HVLV F-110x4 Feed Connector for the Recharger V8HD series.



Shown: CULTEC HVLV FC-24 Feed Connector inserted into side portals of CULTEC chamber.

Technical Information



CULTEC HVLV® F-110x4 Feed Connector

HVLV® F-110x4 Feed Connectors may be used to create an internal manifold by inserting them into the side portals of the CULTEC stormwater chamber. The HVLV® F-110x4 Feed Connector may be used with Recharger® V8SHD Starter and V8EHD End chambers. They have a larger flow capacity than 18" (450 mm) diameter pipe.



Size (L x W x H)	39" x 27.5" x 18" 991 mm x 699 mm x 457 mm
Installed Length (exposed)	For Recharger V8HD: 6" (152 mm) typ.
Chamber Storage	1.97 ft³/ft 0.18 m³/m
Compatible Models	Recharger V8RHD, V8SHD and V8EHD

When installing the Recharger V8HD series, the HVLV F-110x4 Feed Connectors are only used on the V8RHD, V8SHD, and V8EHD chambers. When the manifold is to be located at the in the middle of the system you must use the HVLV FC-24 Feed Connector for the Recharger V8IHD Intermediate model.



Shown: CULTEC HVLV F-110x4 Feed Connector inserted into side portals of CULTEC chamber.

CULTEC No. 410™ Filter Fabric

Use of a non-woven polypropylene filter fabric is required by CULTEC Contactor® and Recharger® stormwater installations. CULTEC Stormwater Systems are typically enveloped top, sides and bottom with filter fabric in order to provide a barrier that prevents soil intrusion into the stone. Covering the bed's top and sides are mandatory; the use of filter fabric on the bottom of the system is up to the engineer's design preference.



CULTEC No. 20L™ Polyethylene Liner

CULTEC No. 20L™ Polyethylene Liner is a membrane consisting of a blended linear polyethylene. It is designed to provide an economical solution to prevent scouring and to provide a smooth surface upon which the water may travel when using the CULTEC manifold feature. The liner is to be placed beneath the CULTEC stormwater chambers that will be utilizing the internal manifold feature and span the entire width of the bed. Carbon black provides protection from UV rays. It does not contain plasticizers that in time can migrate to the surface, causing premature aging.



Technical Information

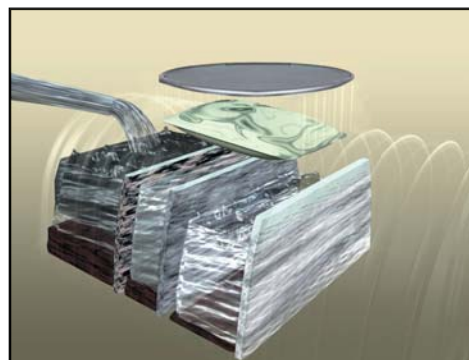
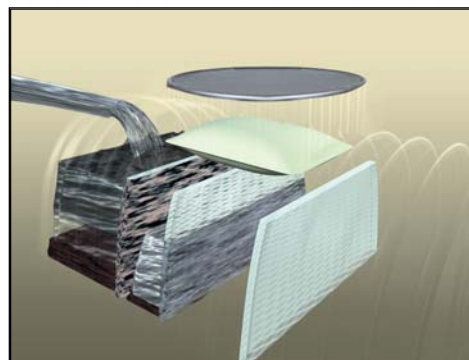
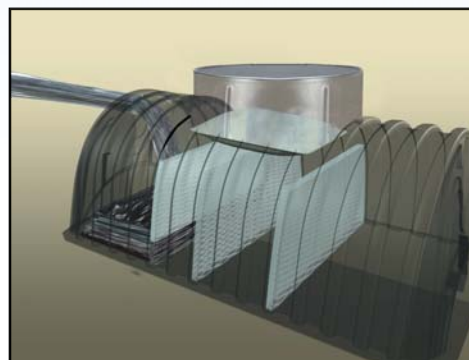
CULTEC STORMFILTER® 330 Water Quality Unit

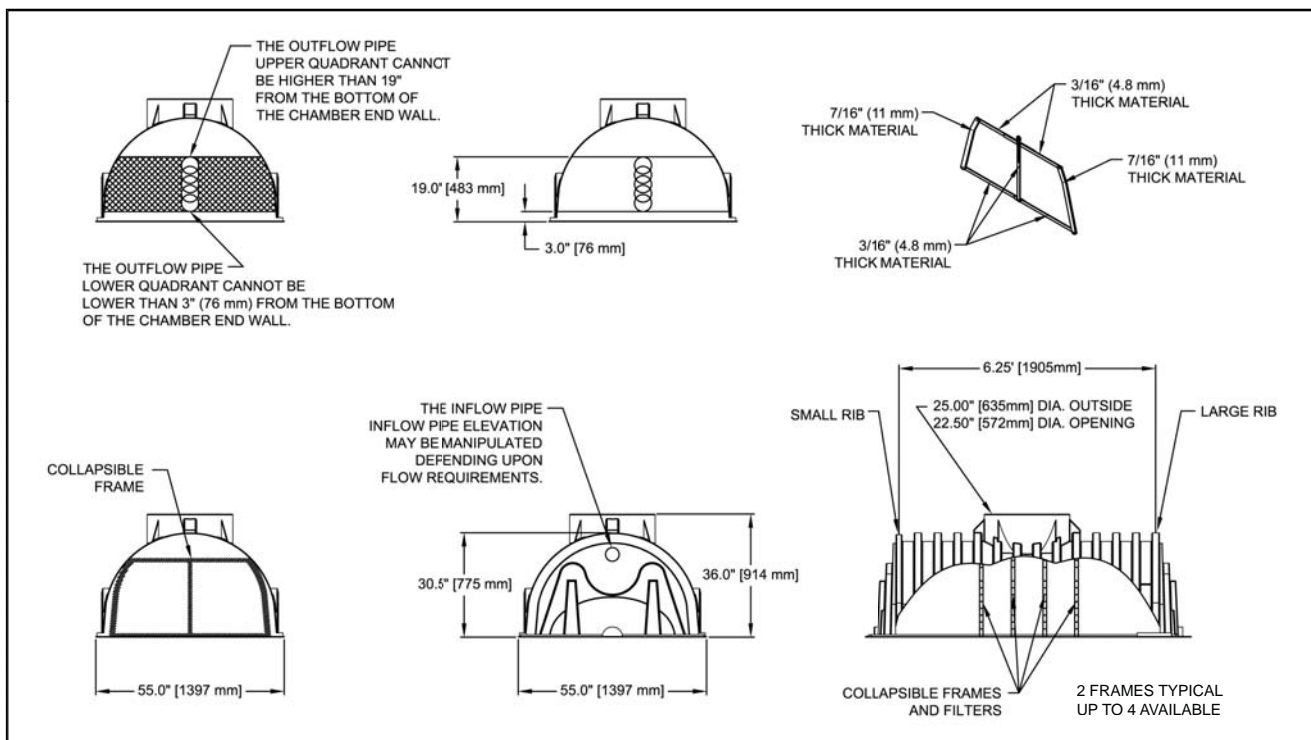
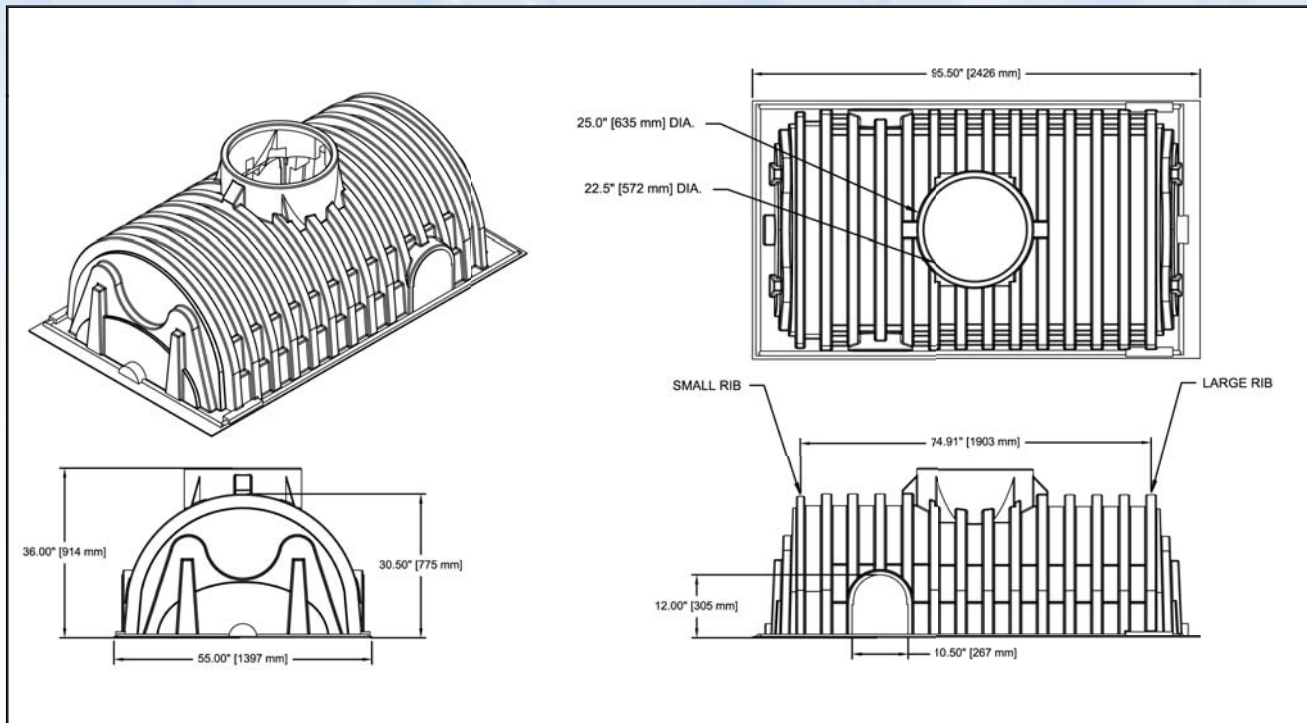
The CULTEC StormFilter® 330 is designed to be a secondary in-line filter system that effectively removes many of the smaller particles not eliminated by conventional structures during the pretreatment process.

CULTEC StormFilter® 330 is a pass-through filter system. It has a welded and secured solid bottom and typically comes with two removal filter frames.



Size (L x W x H)	8' x 55" x 36" 2.44 m x 1397 mm x 914 mm
Access Opening	25" 635 mm
Capacity	418.5 gal. 1584 l
Number of Filters	2 Typical (up to 4 available)
Filtration Capability	980 gpm 3710 lpm
Apparent Opening Size of Filter	U.S. 70 Sieve
Max. Allowable Cover	4' 1.22 m
Weight	300 lbs. 136.1 kg
Max. Inlet Opening in Endwall	8" (fully filtered) 203 mm (fully filtered) 24" (w/ bypass capability) 600 mm (w/ bypass capability)





Technical Information

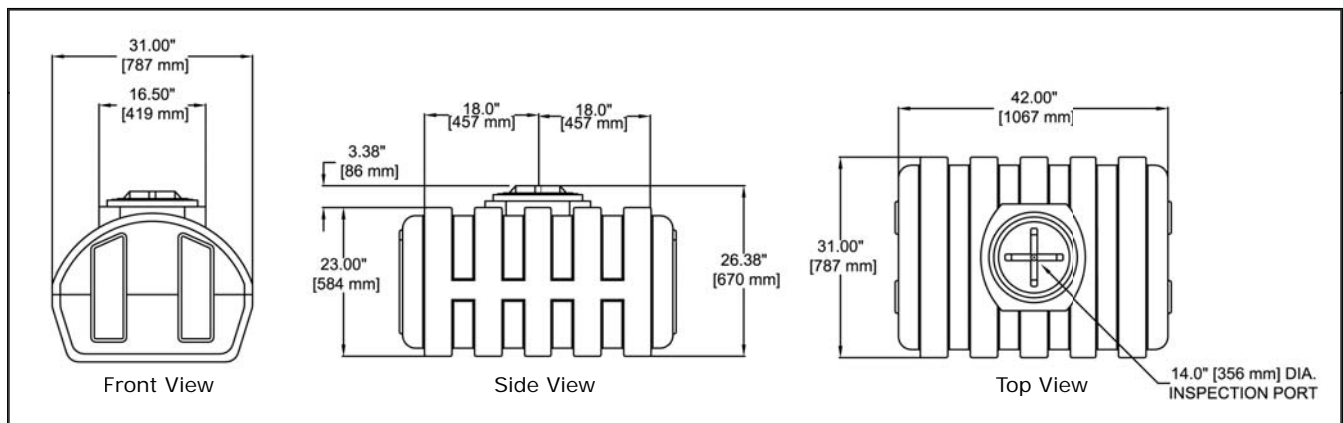
CULTEC STORMFILTER® T-80 Water Quality Unit

CULTEC StormFilter® T-80 is a cost-effective filtration unit used to remove leaves and debris from rainwater collected by catchbasins or gutters. It is perfect for treating roof and driveway runoff for light commercial or residential applications.

Use the StormFilter® T-80 with or without a corrugated riser, grate or optional filter (*each sold separately*) based on your needs.

When the filter frames are not installed, the StormFilter® T-80 may be used as a holding tank or catchbasin.

Size (L x W x H)	42" x 31" x 26.38" 1067 mm x 787 mm x 670 mm
Access Opening	12.5" 318 mm
Capacity	90 gal 340.7 L
Number of Filters	1 Typical
Filtration Capability	438 gpm 1658 lpm
Apparent Opening Size of Filter	U.S. Sieve 40
Max. Allowable Cover	12" 305 mm
Weight	44 lbs. 20 kg
Max. Inlet Opening in Endwall	4" 100 mm



Technical Information



CULTEC Contactor® Series End Detail Information

Model RHD is a **starter / stand alone** unit with two full endwalls. They are used to start lines or can be used singularly. They may also be trimmed to into model type EHD.

Model EHD is a **middle / end unit** with one closed endwall and one open end. They are used to continue lines and also used to end a line.

Large Rib
End Detail

Small Rib
End Detail



Model RHD

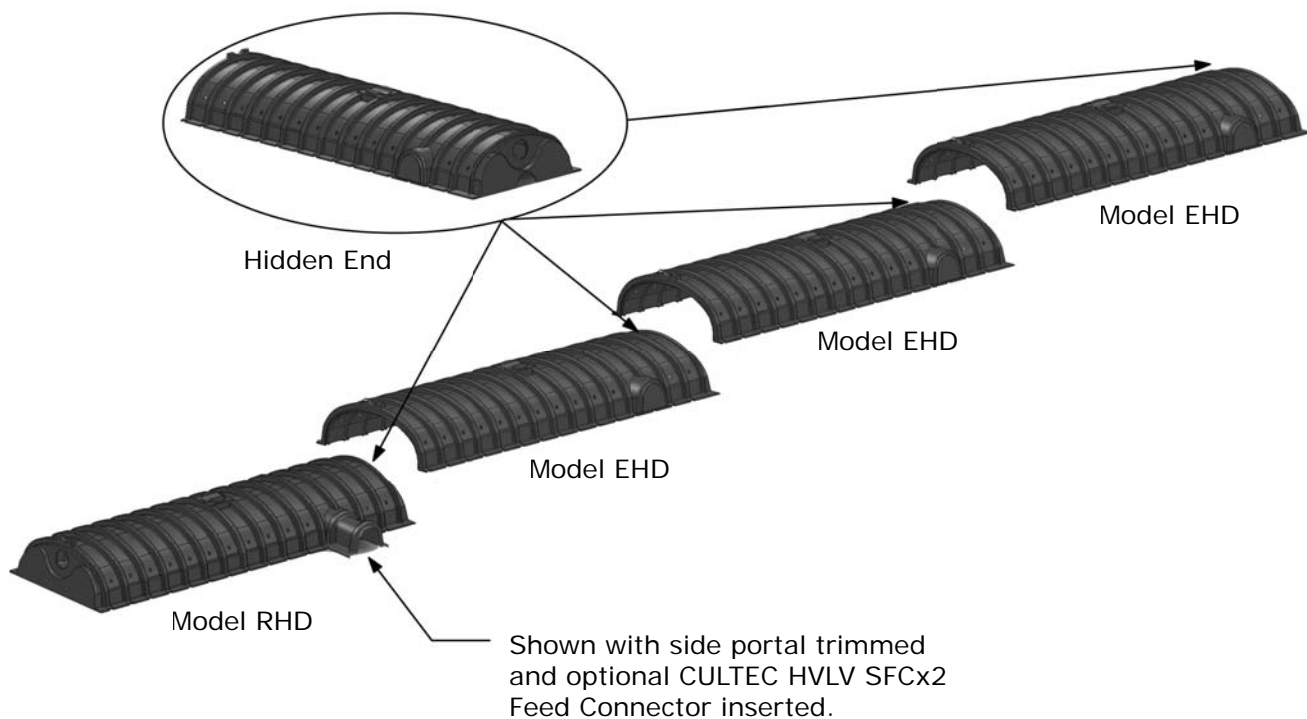


Model EHD

CULTEC Contactor® Series Typical Installation Method

Interlock Model RHD to EHD using the patented overlapping rib connection.

- Start each line with a Model RHD.
- Use Model EHD to continue the length of your line.
- End your line by using a Model EHD.



Technical Information

CULTEC End Detail Information for Recharger® Model 150XLHD, 280HD, & 330XLHD

Model RHD is a **stand alone** unit with two fully closed endwalls. They are used when a single unit is required. They may also be trimmed to into model types SHD, IHD, or EHD.

Model SHD is a **starter** unit with one closed endwall and one partially open endwall. They are used to start a chamber row.

Model IHD is an **intermediate** unit with one fully open end and one partially open endwall. They are used to continue the length of a line of chambers.

Model EHD is an **end unit** with one fully open end and one fully closed endwall. They are used to end a chamber run.

Large Rib
End Detail

Small Rib
End Detail



Model RHD



Model SHD



Model IHD



Model EHD

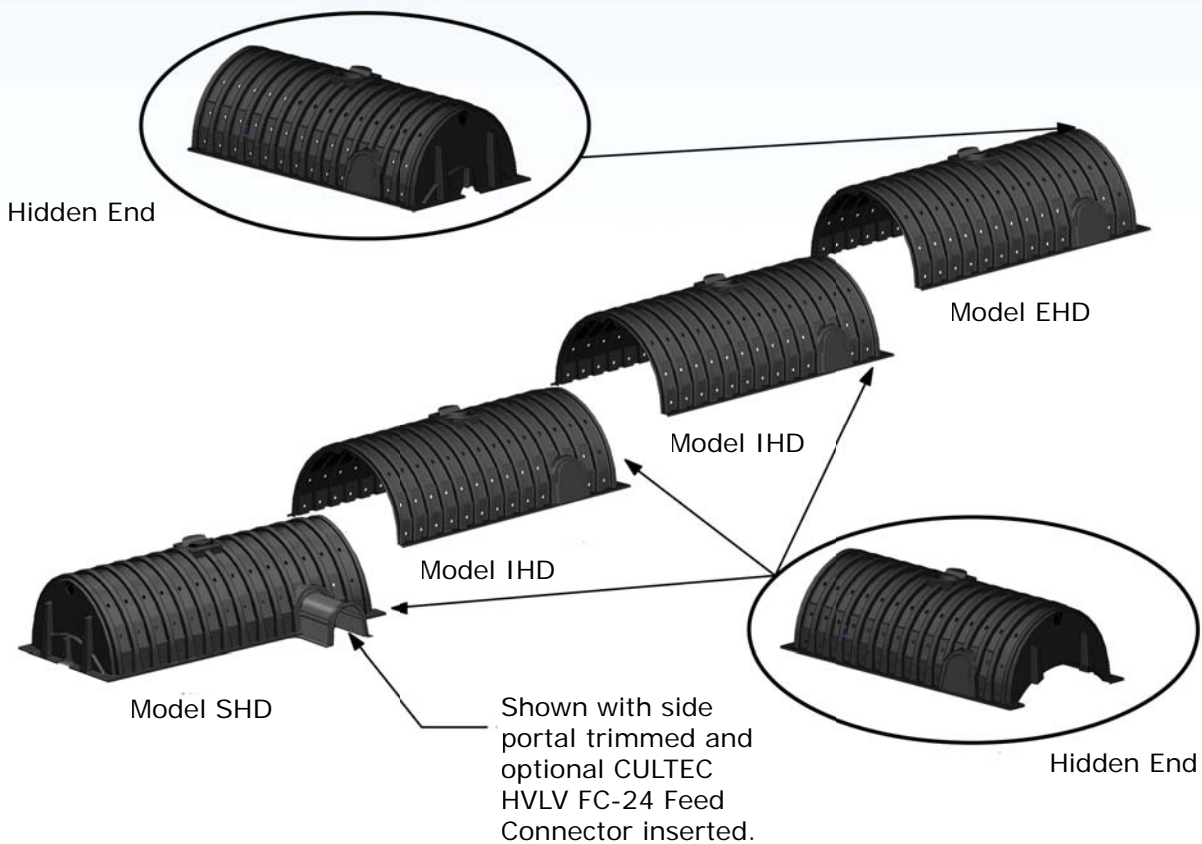
Technical Information



CULTEC Typical Installation Method for Recharger® Model 150XLHD, 280HD, & 330XLHD

Interlock Model SHD to IHD using the patented overlapping rib connection. Finish the line with Model EHD.

- Start each line with a Model SHD.
- Use Model IHD to continue the length of your line.
- End your line by using a Model EHD.



Technical Information

CULTEC End Detail Information for Recharger® V8HD

Large Rib
End Detail

Small Rib
End Detail

Model RHD is a **stand alone** unit with two fully closed endwalls. They are used when a single unit is required. They may be also be trimmed to into model types SHD or EHD.



Model RHD

Model SHD is a **starter** unit with one closed endwall and one partially open endwall. They are used to start a chamber row.



Model SHD

Model IHD is an **intermediate** unit with one fully open end and one partially open endwall. They are used to continue the length of a line of chambers.



Model IHD

Model EHD is an **end unit** with one fully open end and one fully closed endwall. They are used to end a chamber run.



Model EHD

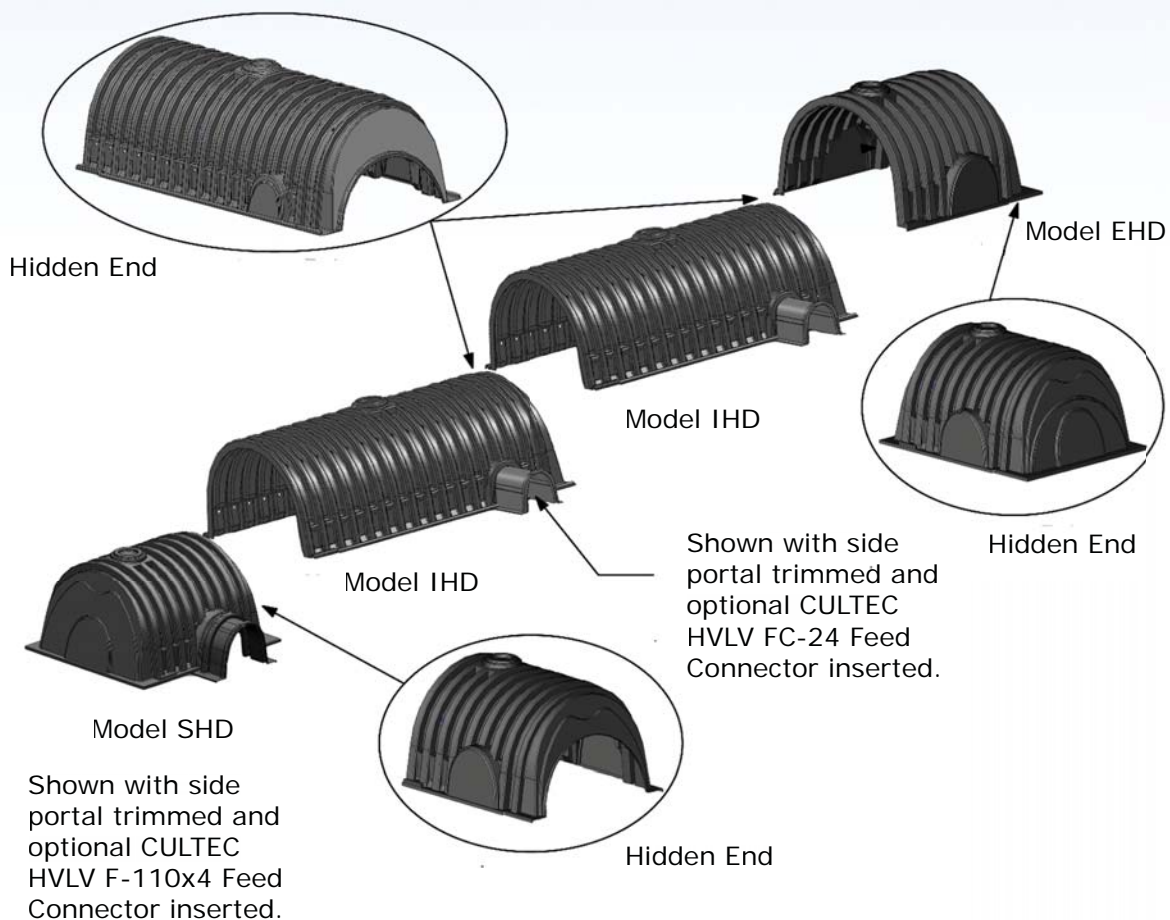
Technical Information



CULTEC Typical Installation Method for Recharger® V8HD

Interlock Model SHD to IHD using the patented overlapping rib connection. Finish the line with Model EHD.

- Start each line with a Model SHD.
- Use Model IHD to continue the length of your line.
- End your line by using a Model EHD.



Note:

- The Starter and End Sections are shorter in length than the Intermediate sections.
- The Starter and End sections are able to accept the HVLV® F-110x4 Feed Connector into its side portal.
- The Intermediate sections are able to accept the HVLV® FC-24 Feed Connector into its side portal.

Limited 1-Year Warranty

CULTEC, Inc. finished products, when properly installed, registered with Cultec, Inc., and operated under normal conditions of use, are covered under Cultec Inc.'s Limited Warranty to be free from defects in material and workmanship for a period of one (1) year from the date of manufacture. In order to obtain Cultec's Limited Warranty, the product warranty registration card must be completed and returned to Cultec, Inc., having been postmarked within thirty (30) days of installation. Failure to return the warranty registration card to Cultec, Inc. shall void the Limited Warranty. This Limited Warranty shall be void if the finished product is not installed within forty-five (45) days of the date of purchase from Cultec, Inc. In order to obtain performance under this Limited Warranty, Cultec, Inc. must be provided with written notice of any defect promptly (in no case later than ten (10) business days after initial discovery AND prior to the end of the Limited Warranty period), with such notice sent to 878 Federal Road, PO Box 280, Brookfield, CT 06804-0280. The original purchase receipt for the product must be included with documentation supporting any claim under the terms of this Limited Warranty. Failure to promptly submit notice of defect, a receipt and completed limited warranty certificate will void the Limited Warranty. Cultec, Inc. shall not be responsible for any freight charges incurred in connection with this Limited Warranty. A fee may be incurred when Cultec, Inc. (in its sole discretion) deems it necessary for a Cultec, Inc. representative to visit a product installation site.

This Limited Warranty extends only to Cultec, Inc. products when the products are installed in 'single level', provided that such products do not, in the collective, amount to more than 12,000 cubic feet (339.84 cubic meters) of water volume storage capacity. This Limited Warranty shall be void where products are installed in 'multi-layer' or 'multi-tier' systems, as well as wherein collective system volume exceeds 12,000 cubic feet (339.84 cubic meters) of water volume storage capacity. Notwithstanding the foregoing, Cultec, Inc., in its sole discretion, may extend certain Limited Warranty terms upon 'double-layer' or 'double-tier' product installations, as well as 'single level' product installations wherein collective system volume exceeds 12,000 cubic feet (339.84 cubic meters) of water volume storage capacity, provided that (i) the buyer has contacted Cultec, Inc. prior to installation and has advised of the proposed installation design; (ii) all product warranty registration information has been provided prior to product installation; (iii) a pre-construction/pre-installation meeting has been held with representatives of Cultec, Inc.; and (iv) Cultec, Inc. has provided written confirmation of its intent to honor any Limited Warranty terms with respect to the specific installation. Under no circumstances shall any decision by Cultec, Inc. to honor such terms be relied upon by any party in any subsequent product purchase or installation.

This Limited Warranty does not apply to installation piping and/or other parts not supplied by Cultec, Inc. Cultec, Inc.'s limited warranties also do not extend to any goods or parts which have been damaged prior to installation, subjected to misuse, damaged by lack of maintenance, improper installation, neglect, damaged by accident, or damaged by being crushed by heavy equipment weighing in excess of the rated load carrying capacity of the product. This Limited Warranty also does not apply to shipping or in-transit damage.

THIS LIMITED WARRANTY DOES NOT APPLY TO CULTEC, INC. PRODUCTS THAT HAVE NOT BEEN INSTALLED ACCORDING TO CULTEC WRITTEN INSTALLATION INSTRUCTIONS. ANY PRODUCT DAMAGE OR FAILURE RESULTING FROM IMPROPER OR NEGLIGENT INSTALLATION IS SPECIFICALLY EXCLUDED FROM THIS WARRANTY AND SHALL REMAIN THE BUYER'S RESPONSIBILITY.

THIS WARRANTY IS LIMITED TO THE BUYER AND IS NOT TRANSFERABLE. THIS EXPRESS LIMITED WARRANTY EXCLUDES ALL OTHER WARRANTIES OR REPRESENTATIONS, EXPRESSED, IMPLIED, OR STATUTORY, BY ANY LITERATURE, DATA, OR PERSON. CULTEC, INC. EXPRESSLY DISCLAIMS ANY WARRANTY OF MERCHANTABILITY OR FITNESS FOR A PARTICULAR USE OR PURPOSE WITH RESPECT TO THE GOODS SOLD. THERE ARE NO WARRANTIES WHICH EXTEND BEYOND THE DESCRIPTIONS SET FORTH IN THIS LIMITED WARRANTY, NOTWITHSTANDING ANY KNOWLEDGE OF CULTEC, INC. REGARDING THE USE OR USES INTENDED TO BE MADE OF GOODS, PROPOSED CHANGES OR ADDITIONS TO GOODS, OR ANY ASSISTANCE OR SUGGESTIONS THAT MAY HAVE BEEN MADE BY CULTEC, INC. PERSONNEL. BUYER IS RESPONSIBLE FOR DETERMINING THE SUITABILITY OF CULTEC, INC. PRODUCTS FOR BUYER'S USE OR RESALE, OR FOR INCORPORATING THEM INTO OBJECTS OR APPLICATIONS WHICH BUYER DESIGNS, ASSEMBLES, CONSTRUCTS OR MANUFACTURES.

CULTEC, INC. WILL NOT BE RESPONSIBLE OR LIABLE FOR INDIRECT OR CONSEQUENTIAL DAMAGES OF ANY KIND, HOWEVER ARISING, INCLUDING BUT NOT LIMITED TO THOSE FOR USE OF ANY PRODUCTS, LOSS OF TIME, INCONVENIENCE, LOST PROFIT, LABOR CHARGES, OR OTHER INCIDENTAL OR CONSEQUENTIAL DAMAGES WITH RESPECT TO PERSONS, BUSINESS, OR PROPERTY, WHETHER AS A RESULT OF BREACH OF WARRANTY, NEGLIGENCE OR OTHERWISE. NOTWITHSTANDING ANY OTHER PROVISION OF THIS LIMITED WARRANTY, BUYER'S REMEDY AGAINST CULTEC, INC. FOR GOODS SUPPLIED OR FOR NON-DELIVERED GOODS OR FAILURE TO FURNISH GOODS, WHETHER OR NOT BASED ON NEGLIGENCE, STRICT LIABILITY OR BREACH OF EXPRESS OR IMPLIED WARRANTY, IS LIMITED SOLELY, AT CULTEC, INC.'S OPTION, TO REPLACEMENT OF OR CURE OF SUCH NONCONFORMING OR NON-DELIVERED GOODS OR RETURN OF THE PURCHASE PRICE FOR SUCH GOODS AND IN NO EVENT SHALL EXCEED THE PRICE OR CHARGE FOR SUCH GOODS. CULTEC, INC.'S MAXIMUM LIABILITY UNDER THIS EXCLUSIVE REMEDY SHALL NEVER EXCEED THE COST OF THE SUBJECT PRODUCT. CULTEC, INC. RESERVES THE RIGHT, AT ITS SOLE DISCRETION, TO REFUND THE PURCHASE PRICE IN LIEU OF REPAIR OR REPLACEMENT.



Chamber of Choice™

CULTEC, Inc.

878 Federal Road • P.O. Box 280 • Brookfield, CT 06804 USA

Phone: 203-775-4416 • Toll Free: 1-800-4-CULTEC • Fax: 203-775-1462

Web: www.cultec.com • E-mail: custservice@cultec.com

