

# ANTC483/483SS CLAMP SET FOR COLLINEAR ANTENNAS

## WARNING:

For your safety, do not install any antenna near power lines, and carefully follow all installation instructions. If the antenna falls toward or contacts any overhead wires, immediately let go and stay away. Call the utility company for assistance. Always use safety devices for tower climbing. Ensure that the tower structure is well grounded for lightning protection.

## IMPORTANT - BEFORE ASSEMBLING AND MOUNTING:

Carefully read these instructions and study the diagrams. Check to make sure you have all parts. The antenna and clamp kit are packaged as two separate items. Both clamps must be installed and properly spaced to prevent antenna rotation from wind load.

*NOTE: To prevent possible damage to the ferrule and radome, tighten all nuts only until the lock washers are flattened. Then add 1/2 turn to each.*

## PARTS LIST (Figure 1)

- (4) Tower or antenna (single) galvanized clamp plates
- (2) Welded (dual) galvanized clamp plates
- (4) 1/2"-13 x 10" stainless steel threaded rods
- (12) 1/2" stainless steel hex nuts
- (8) 1/2" stainless steel split lock washers
- (1) Anti-seize compound

## MOUNTING INSTRUCTIONS

Apply anti-seize compound to threaded rod ends. Insert rods through dual clamps with hex nuts and lock washers in the middle of the clamps as shown in figure 2. Mount both clamps to the support structure with 2 single clamp plates, hex nuts, and lock washers. Arrange clamps so that 1"-2" of ferrule is exposed above and below the clamps. Be sure to allow sufficient thread length on the antenna side of the clamps. Tighten clamps only until lockwashers are flat, then add 1/2 turn additional on each nut.

Figure 1:  
Clamp Set Contents



Figure 2:  
Clamp Preassembly

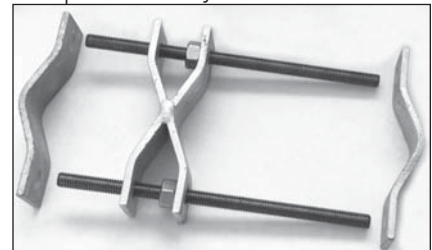
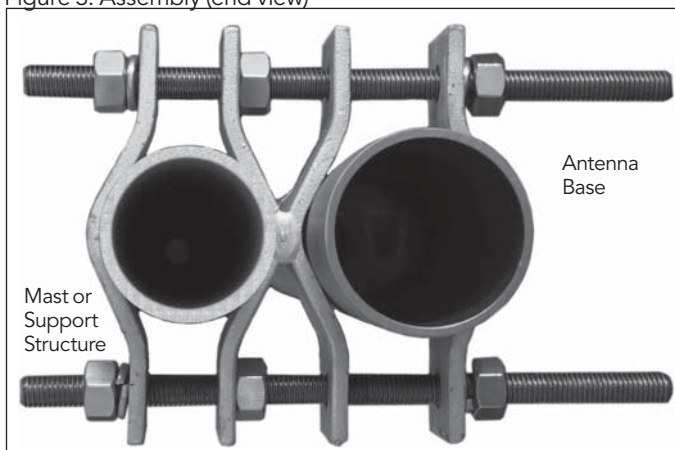


Figure 3: Assembly (end view)



## Dimensional Data:

ANTC483 and 483SS can be attached to square or round tower legs from 1.5" to 3.5" O.D. Clamp holes are 9/16" diameter, and 4.75" inches center to center.