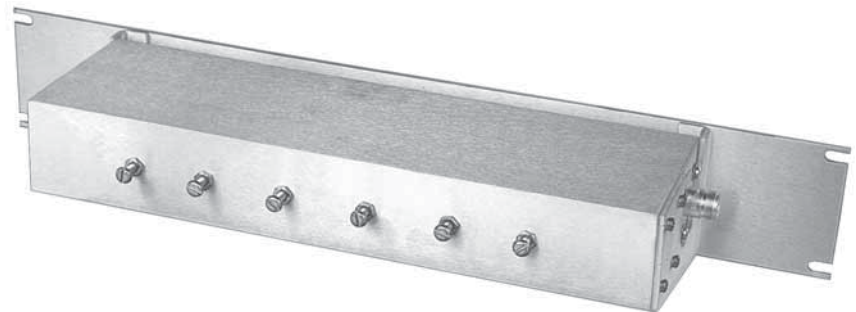


| | |
|------------|-------------|
| TPCP-8626 | 806-821 MHz |
| TPCP-8626B | 824-849 MHz |
| TPCF-8926 | 870-890 MHz |
| TPCF-8926B | 870-890 MHz |

TPCP-8626, TPCF-8926 COMBLINE PRESELECTORS

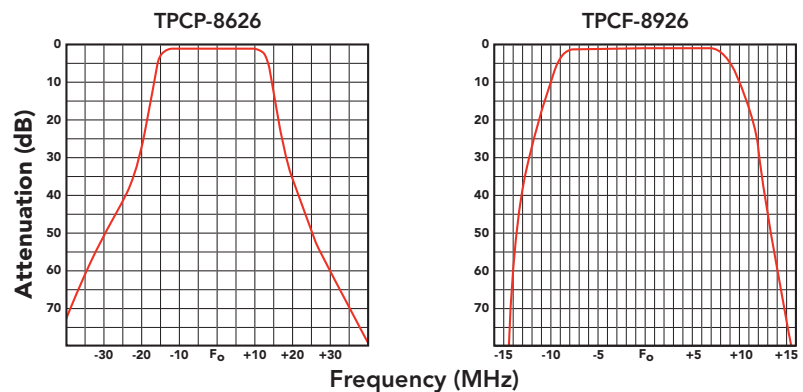
The TPCP-8626 and TPCF-8926 Comblines Preselector filters are specially designed for use in 800 MHz master receive systems, allowing system designers to accommodate multiple systems while ensuring rejection of external noise sources. These preselectors and sideband filters provide maximum desense protection for receiver front ends when installed between the multicoupler or transmitter and antenna.

Comblines filters feature "sharp skirt" selectivity with very low insertion loss (see below). Each filter is factory tuned and tested on customer supplied frequencies prior to shipment. The 8626/8926 filter series is available with pass bandwidths of 10, 15, and 20 MHz, and each unit consists of a series of 6 resonators in a compact 13" x 2" x 4.5" package. These filters are typically supplied on a 19" panel for rack mounting, and other options are available on request.



TPCP-8626

TYPICAL FILTER RESPONSE



| SPECIFICATIONS | TPCP-8626 | TPCP-8626B | TPCF-8926 | TPCF-8926B |
|------------------------------|----------------------------------|-------------|-------------|-------------|
| Frequency range (MHz) | 806-821 MHz | 824-849 MHz | 870-890 MHz | 870-890 MHz |
| Bandpass (typ) | 15 MHz | 10 MHz | 20 MHz | 10 MHz |
| Attenuation (+/- 45 from Fc) | 85 dB | | | |
| Insertion loss (typ) | 0.35 dB | | | |
| Power input (max) | N/A | N/A | 500 watts | 500 watts |
| Impedance / VSWR (max) | 50 ohms / 1.25:1 | | | |
| Temperature range | -30 to +60°C | | | |
| Number of cavities | 6 | | | |
| Connectors | N Female | | | |
| Dimensions (HWD) in (cm) | 3.5 x 19 x 5 (8.9 x 48.3 x 12.7) | | | |
| Mounting | 19" rack mount | | | |
| Finish | Clear alodine | | | |
| Net weight lb. (kg) | 4 (1.8) | | | |
| Shipping weight lb. (kg) | 8 (3.6) | | | |